

iBoard®

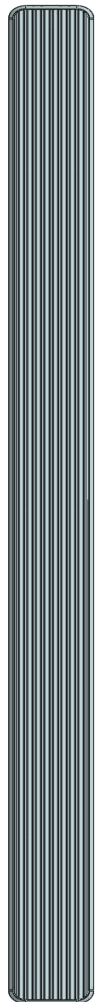
iBoard® by APS

PART#: IB-027

READ INSTRUCTIONS CAREFULLY BEFORE STARTING INSTALLATION. REMOVE CONTENTS FROM BOX AND VERIFY ALL PARTS ARE PRESENT. ASSISTANCE IS RECOMMENDED.

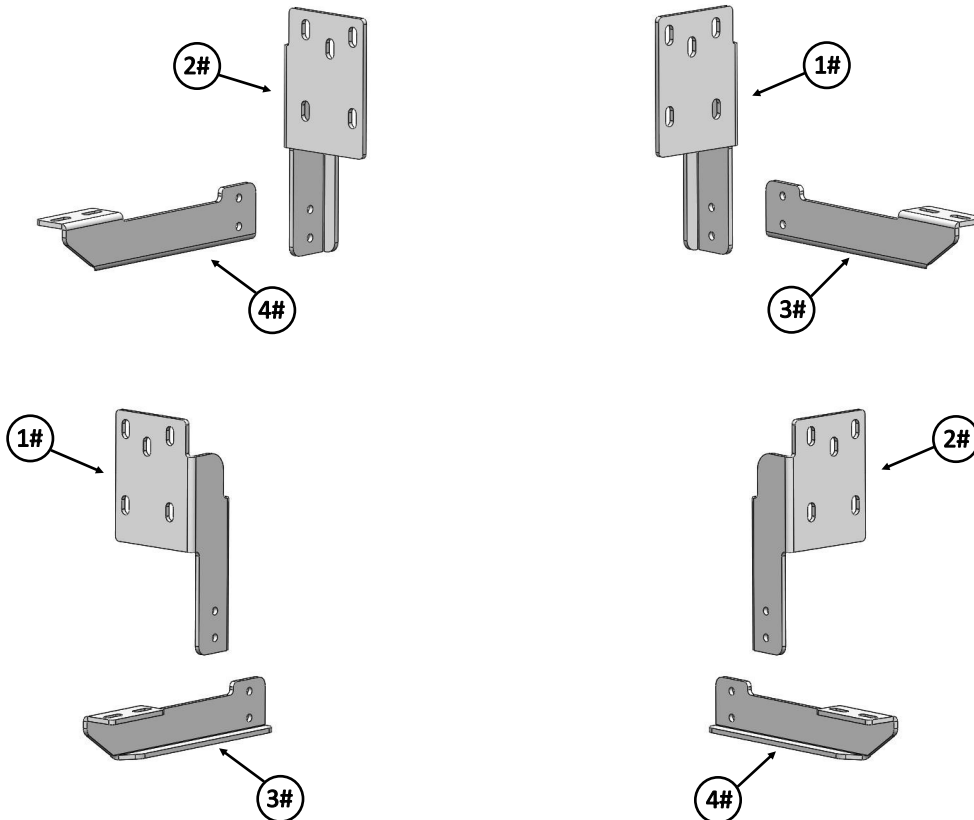
*ROCKER PANEL MOUNT
*NO DRILLING REQUIRED

Fastener Size	Tightening Torque (ft-lbs)	Required
6mm	6-7	√
8mm	16-18	√
10mm	31-32	X
12mm	56-58	X
14mm	92-94	X



Driver Side Step Bar

Front
↑



Passenger Side Step Bar

Customer Support: info@iboardauto.com

iBoard®

Mounting Bracket List					
Item	QTY	Description	Item	QTY	Description
1#	2	Passenger Front / Driver Rear Mounting Brackets	3#	2	Passenger Front / Driver Rear Bar Brackets
2#	2	Driver Front / Passenger Rear Mounting Brackets	4#	2	Driver Front / Passenger Rear Bar Brackets

Hardware Package A (For Bracket Installation)					
Item	QTY	Description	Item	QTY	Description
1#	12	M8X1.25-30mm Hex Bolts	5#	20	M8 Lock Washers
2#	8	M8X1.25-25mm Hex Bolts	6#	8	M8X1.25 Hex Nuts
3#	12	M8 Large Flat Washers	7#	8	M8 Clip Nuts
4#	16	M8 Flat Washers			



Hardware Package B (For Aluminum Step Bar Installation Only, Not Supply to SS. Step Bar)					
Item	QTY	Description	Item	QTY	Description
1#	8	M6X1-20mm Square Head Bolts	3#	8	M6X1 Nylon Lock Nuts
2#	8	M6 Large Flat Washers			



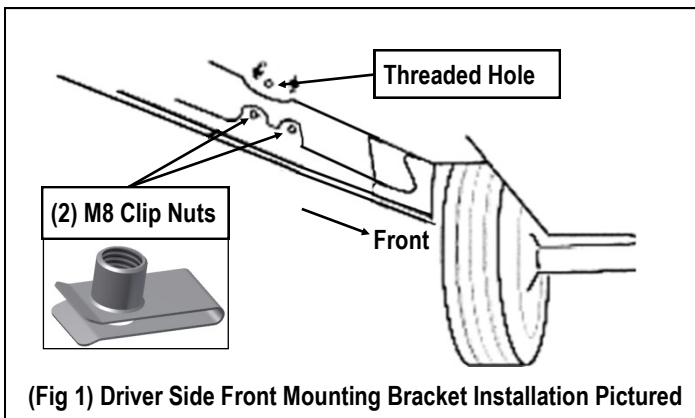
Hardware Package C (For Stainless Steel Step Bar Installation Only, Not Supply to Aluminum Step Bar)					
Item	QTY	Description	Item	QTY	Description
1#	8	M6X1-20mm Hex Bolts	3#	8	M6 Flat Washers
2#	8	M6 Lock Washers			



iBoard®

STEP 1

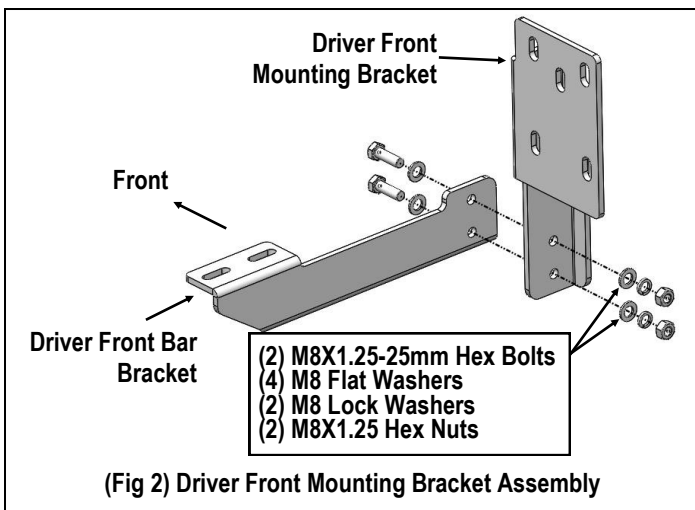
Start installation from the driver side front of the vehicle. Locate on the backside of the rocker panel (3) mounting holes where the plastic fascia is cut out. Select (2) M8 Clip Nuts, line up the Clip Nuts with the holes. Locate a threaded hole above the clip nuts on the rocker panel. If equipped, remove plug to expose threaded hole. **NOTE:** Threaded nut on Clip nut must face inside of the side panel, (Fig 1).



(Fig 1) Driver Side Front Mounting Bracket Installation Pictured

STEP 2

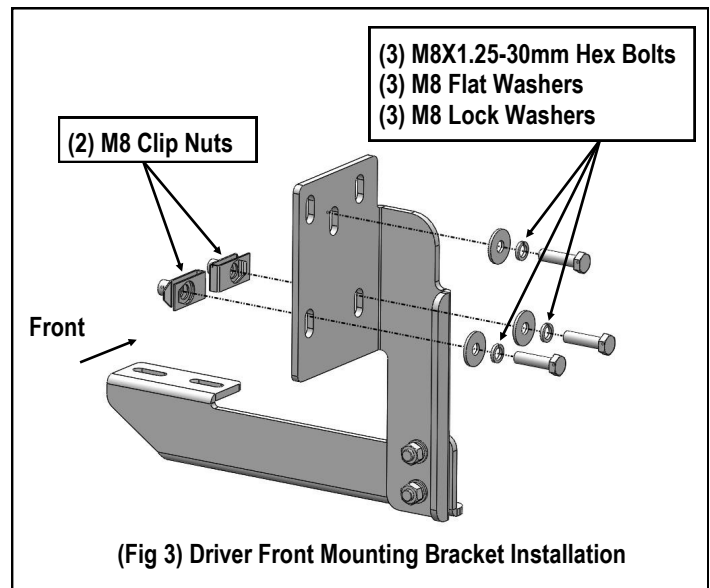
Select (1) Driver Front Mounting Bracket and (1) Driver Front Bar Bracket. Assembly with (2) M8X1.25-25mm Hex Bolts, (2) M8 Lock Washers, (4) M8 Flat Washers and (2) M8X1.25 Hex Nuts, (Fig 2). Do not fully tighten at this time.



(Fig 2) Driver Front Mounting Bracket Assembly

STEP 3

Attach the assembled Driver Front Bracket to the installed M8 Clip Nuts with the included (2) M8X1.25-30mm Hex Bolts, (2) M8 Lock Washers and (2) M8 Large Flat Washers; to the threaded hole using (1) M8X1.25-30mm Hex Bolt, (1) M8 Lock Washers and (1) M8 Large Flat Washer, (Fig 3). Do not fully tighten at this time.

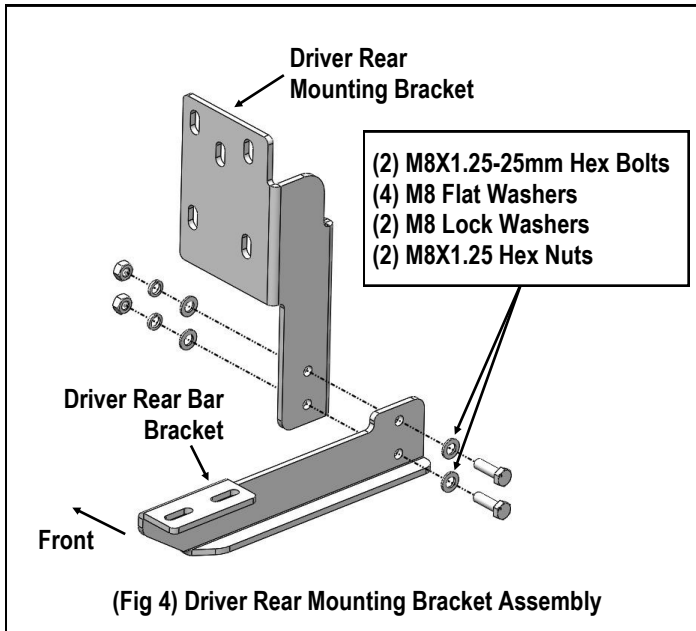


(Fig 3) Driver Front Mounting Bracket Installation

STEP 4

Move to the driver side rear mounting location. Repeat Steps 1—3 to assemble and install (1) Driver Rear Mounting Bracket and (1) Driver Rear Bar Bracket, (Fig 4). Do not fully tighten hardware at this time.

iBoard®



STEP 5

Once all (2) mounting brackets are installed, then proceed to the Step Bar installation. According to the style of Step Bar proceed to the correct installation STEPS.

Note: Aluminum Step Bar refer to STEP 6; Stainless Steel Step Bar skip to STEP 7.

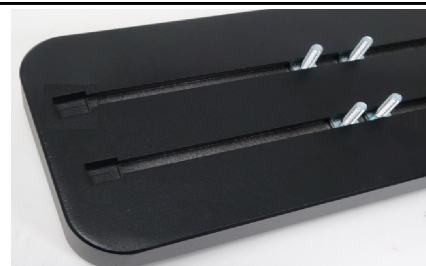
STEP 6

Aluminum Step Bar Installation:

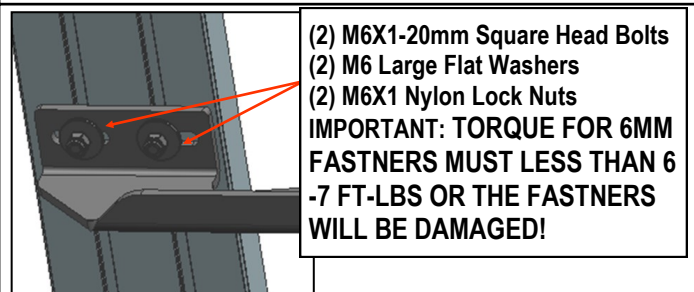
Select a **Aluminum Step Bar**. Slip (2) M6x1-20mm Square Head Bolts into each bottom channel (Fig 5). Carefully position the Step Bar onto the (2) Mounting Brackets.

IMPORTANT: Do not slide the Step Bar on the Brackets or the bottom surface of the board will be damaged. Attach the Step Bar to each Mounting Brackets with (2) M6x1-20mm Square Head Bolts, (2) M6 Large Flat Washers and (2) M6X1 Nylon Lock Nuts, (Fig 6). Do not fully tighten at this time.

Level and adjust the Step Bar and fully tighten all hardware. Repeat **Steps 1-6** for the other side Step Bar installation. **The installation is completed!!!**



(Fig 5) Slip M6X1-20mm Square Head Bolts Into The Bottom Channels



(Fig 6) Running Board Installed Onto Mounting Bracket

STEP 7

Stainless Steel Step Bar Installation:

Select a **Stainless Steel Step Bar** (with the U-Sliders installed on the Bar). Loose the U-Sliders, reposition the U-Sliders onto the board according to the (2) Installed Mounting Brackets location, (Fig 7). Re-secure the U-Sliders on the Step Bar. Attach the Step Bar to the installed Mounting Brackets with (4) M6X1-20mm Hex Bolts, (4) M6 Large Flat Washers & (4) M6 Lock Washers, (Fig 8). Do not fully tighten hardware at this time. Level and adjust the Step Bar and fully tighten all hardware. Repeat **Steps 1-5 and 7** for the other side Step Bar installation. **The installation is completed!!!**

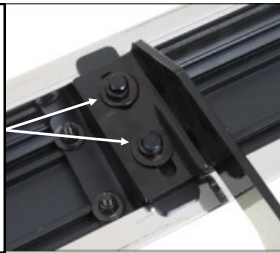


(Fig 7) Slide & line up the U-Slider with the installed mounting brackets along bottom channel

iBoard®

- (2) M6X1-20mm Hex Bolts
- (2) M6 Large Flat Washers
- (2) M6 Lock Washers

IMPORTANT: TORQUE FOR 6MM FASTNERS MUST LESS THAN 6-7 FT-LBS OR THE FASTNERS WILL BE DAMAGED!



(Fig 8) Step Bar Installed on Bracket Installed (Example)

Attention

Do periodic inspections to the installation to make sure that all hardware is secure and tight.
In order to protect your bars/boards, please use only mild soap/non-abrasive products for cleaning.