

iBoard®



Scan for
Installation Video

iBoard® by APS

PART#: IB-234C&H

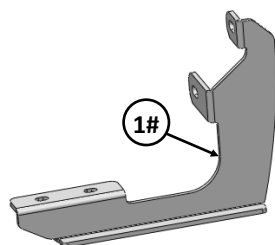
READ INSTRUCTIONS CAREFULLY BEFORE STARTING INSTALLATION. REMOVE CONTENTS FROM BOX AND VERIFY ALL PARTS ARE PRESENT. ASSISTANCE IS RECOMMENDED.

*ROCKER PANEL MOUNT
*NO DRILLING REQUIRED

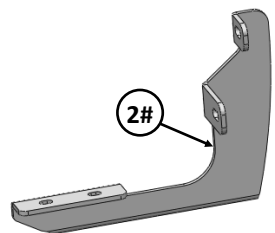
Fastener Size	Tightening Torque (ft-lbs)	Required
6mm	6-7	X
8mm	16-18	√
10mm	31-32	X
12mm	56-58	X
14mm	92-94	X

PART LIST

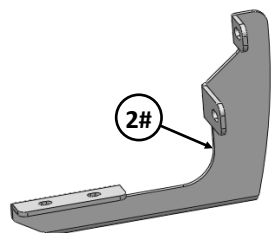
Driver Side Step Bar



1#



2#

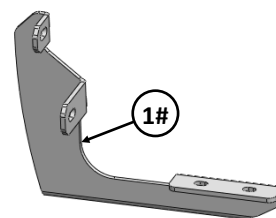


2#

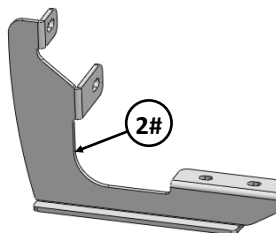
Front



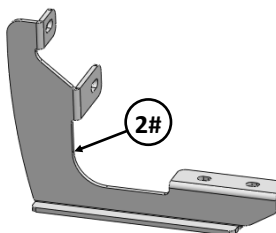
Passenger Side Step Bar



1#



2#




2#

Customer Support: info@iboardauto.com




Mounting Bracket List					
Item	QTY	Description	Item	QTY	Description
1#	2	Driver & Passenger Front Mounting Brackets	2#	4	Mounting Brackets


Hardware Package A (For Bracket Installation)					
Item	QTY	Description	Item	QTY	Description
1#	12	M8 Plastic Washers	3#	12	M8 Nylon Lock Nuts
2#	12	M8 Flat Washers			



1#

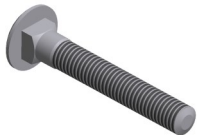


2#




3#


Hardware Package B (For Stainless Steel Step Bar Installation)					
Item	QTY	Description	Item	QTY	Description
1#	12	M8X1.25-35mm Carriage Bolts	3#	12	M8 Nylon Lock Nuts
2#	12	M8 Large Flat Washers	4#	6	Sliders (Packed with Step Bars)



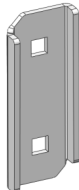
1 #



2 #



3 #

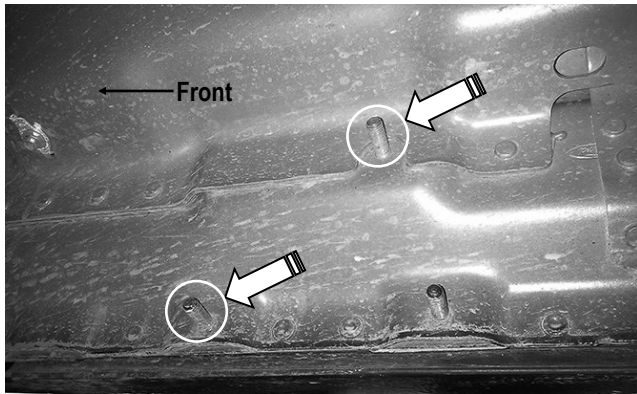


4 #



STEP 1

Start installation from the passenger side front of the vehicle. Locate the rear factory running board mounting location along the inner side of the body, **(Fig 1)**.



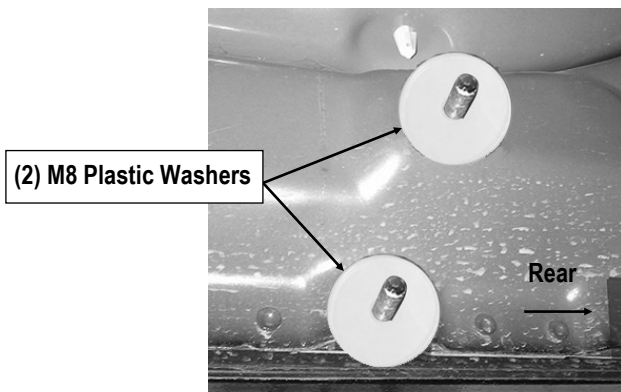
(Fig 1) Passenger Side Front Mounting Location

STEP 2

Slide (1) M8 Plastic Washer over each of the (2) factory mounting studs in the body panel, **(Fig 2)**.

IMPORTANT: The M8 Plastic Washers are designed to prevent corrosion between the aluminum body panel and the steel Mounting Brackets.

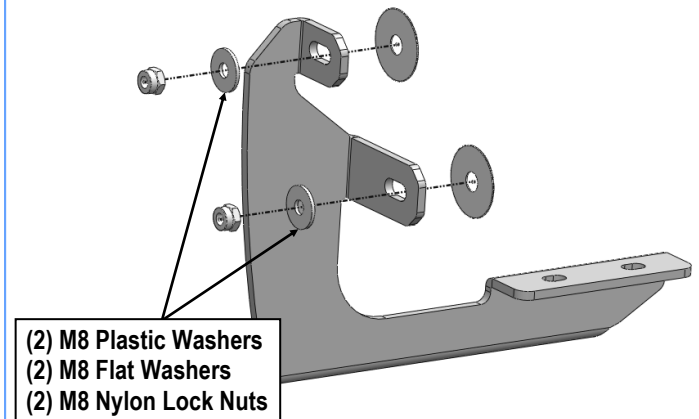
Note: Do not install the Brackets without the Plastic Washers.



(Fig 2) Thread M8 Plastic Washers Onto (2) Mounting Studs

STEP 3

Select (1) Passenger Front Mounting Bracket. Attach the Passenger Front Mounting Bracket to the (2) factory studs with (2) M8 Flat Washers and (2) M8 Nylon Lock Nuts, **(Fig 3)**. Do not fully tighten hardware at this time.



(Fig 3) Passenger Front Mounting Bracket Installation

STEP 4

Move to the passenger side center & rear of the vehicle. Select (1) Mounting Bracket. **NOTE:** All (4) Mounting Brackets will fit left or right side. Repeat **Steps 1—3** to install the passenger side Center & Rear Mounting Brackets.

STEP 5

Once all (3) Passenger side mounting brackets are installed, then proceed to the Step Bar installation. **(Figs 4 & 5)**

(1) Select (1) Slider and (2) M8X1.25-35mm Carriage Bolts;

(2) Install (2) M8X1.25-35mm Carriage Bolts in (1) Slider.

(3) Slide the Slider (with carriage bolts) to the **Step Bar**.

(4) Repeat to install the other (2) sliders to the step bar.

(5) Attach the Step Bar (with the Sliders) onto the installed mounting brackets. Position the Sliders to the installed brackets. Secure the Step Bar to the installed Brackets by using (6) M8 Large Flat Washers and (6) M8 Nylon Lock Nuts and (3)



Sliders, (Fig 5). Do not fully tighten hardware at this time.

Note: The Sliders are packed with the Step Bars.

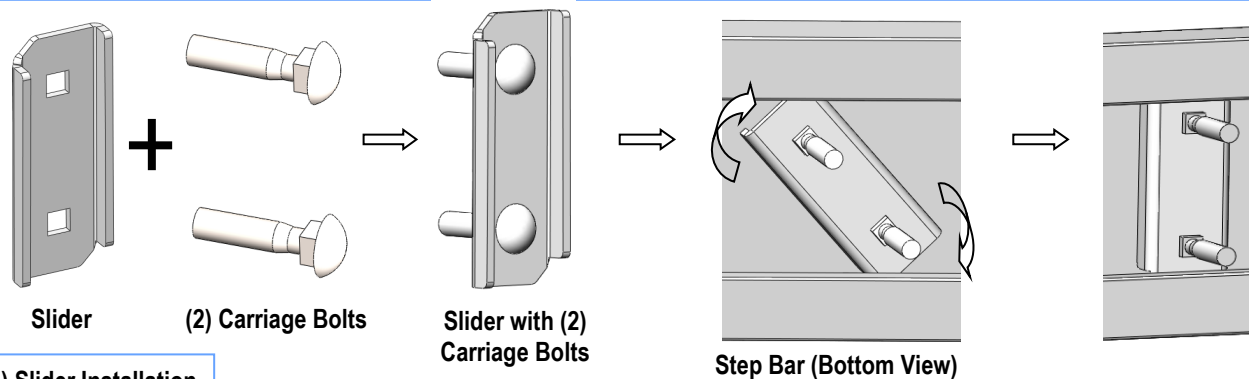
Level and adjust the Step Bar and fully tighten all hardware.

Repeat **Steps 1-5** for the other side Step Bar installation. **The installation is completed!!!**

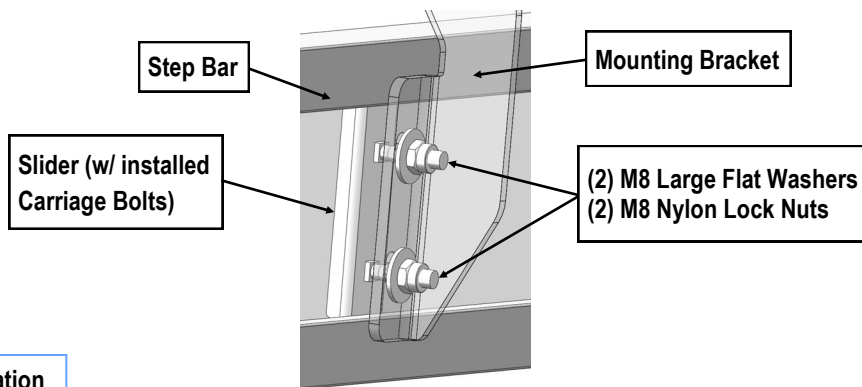
Attention

Do periodic inspections to the installation to make sure that all hardware is secure and tight.

In order to protect your bars/boards, please use mild soap/non-abrasive products for cleaning only.



(Fig 4) Slider Installation



(Fig 5) Step Bar Installation