

# iBoard®

## iBoard® by APS

PART#: IB-189A&B

READ INSTRUCTIONS CAREFULLY BEFORE STARTING INSTALLATION. REMOVE CONTENTS FROM BOX AND VERIFY ALL PARTS ARE PRESENT. ASSISTANCE IS RECOMMENDED.

\*ROCKER PANEL MOUNT  
\*No DRILLING REQUIRED

Fastener Size	Tightening Torque (ft-lbs)
6mm	6-7
8mm	16-18
10mm	31-32
12mm	56-58
14mm	92-94

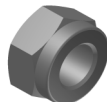
Item	QTY	Description	Item	QTY	Description
1#	4	Mounting Brackets	5#	8	M6X1-20mm Square Head Bolts
2#	12	M8 Plastic Washers	6#	8	M6 Large Flat Washers
3#	12	M8 Large Flat Washers	7#	8	M6X1 Nylon Lock Nuts
4#	12	M8X1.25 Nylon Lock Nuts			



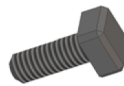
2 #



3 #



4 #



5 #



6 #



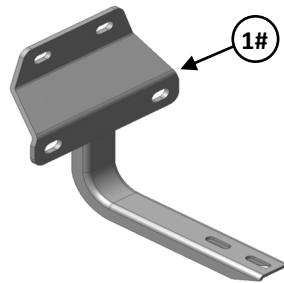
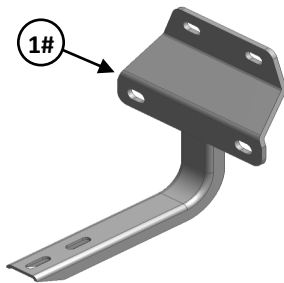
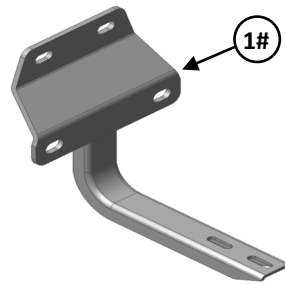
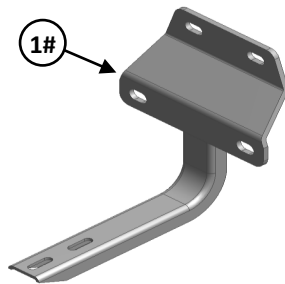
7 #

# iBoard®

Driver

Front

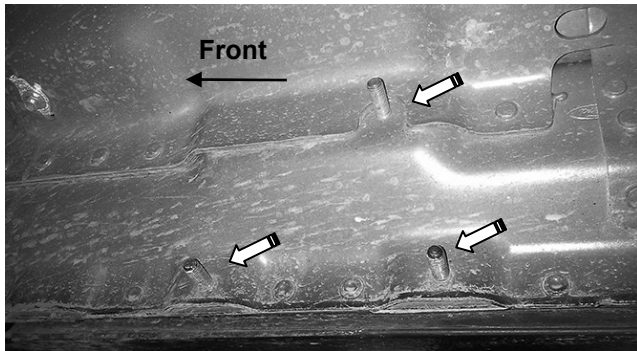
Passenger



# iBoard®

## STEP 1

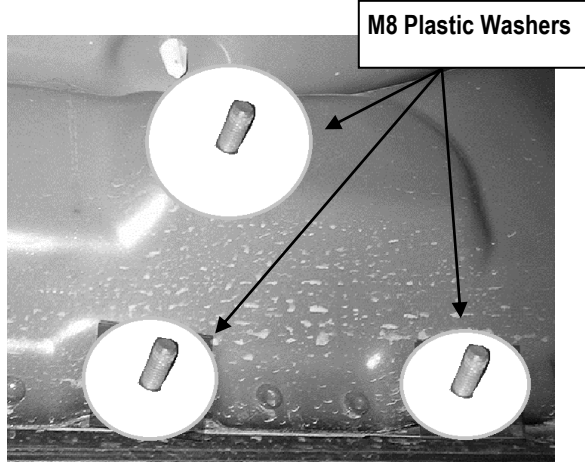
Start the installation under the passenger side of the vehicle. Locate the front factory running board mounting location along the inner side of the body, **(Fig 1)**.



(Fig 1) Passenger Side Front Mounting Location

## STEP 2

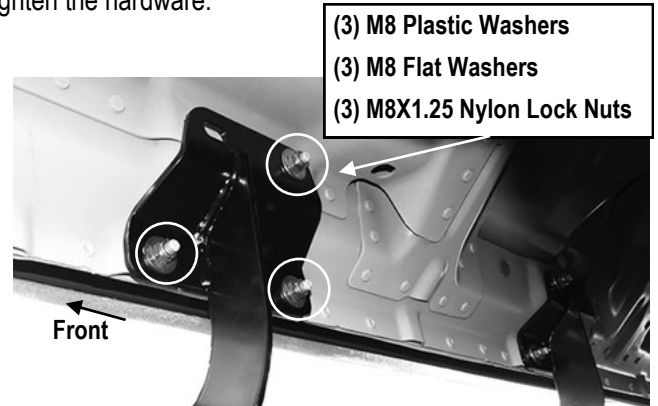
Slide (1) M8 Plastic Washer over each factory mounting stud in the body panel, **(Fig 2)**. **IMPORTANT:** The Plastic Washers are designed to prevent corrosion between the aluminum body panel and the steel mounting brackets. **Do not install the Brackets without the Plastic Washers.**



(Fig 2) Slide the Plastic Washers Over the Mounting Studs

## STEP 3

Select (1) Mounting Bracket. **NOTE:** All (4) Brackets are universal and will fit left or right side for front, rear mounting location. Attach the Mounting Bracket to the (3) factory studs on Passenger Side Front Mounting Location with (3) M8 Flat Washers and (3) M8X1.25 Nylon Lock Nuts, **(Fig 3)**. Snug but do not fully tighten the hardware.



(Fig 3) Passenger Front Mounting Bracket Installed

## STEP 4

Repeat **Steps 1-3** to install the Driver Rear Mounting Bracket.

## STEP 5

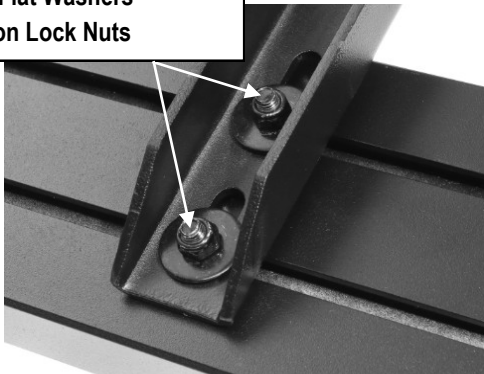
Select a Running Board. Slip (2) M6X1-20mm Square Head Bolts into each bottom channel **(Fig 4)**. Carefully position the Running Board onto the (2) Mounting Brackets. **IMPORTANT:** Do not slide (front to back) the Running Board on the Brackets or the bottom surface of the running board might be damaged. Attach the Running Board to each Mounting Bracket with (2) M6X1-20mm Square Head Bolts, (2) M6 Large Flat Washers and (2) M6X1 Nylon Lock Nuts **(Fig 5)**. Do not tighten at this time.

# iBoard®



(Fig 4) Slip M6X1-20mm Square Head Bolts Into The Bottom Channels

(2)M6X1-20mm Square Head Bolts  
(2)M6 Large Flat Washers  
(2)M6X1 Nylon Lock Nuts



(Fig 5) Running Board Installed Onto Mounting Bracket

## STEP 6

Level and adjust the Running Board as necessary and fully tighten all hardware.

## STEP 7

Repeat **Steps 2-6** for the driver side Running Board installation. The installation is completed (**Fig 6**).



(Fig 6) Installation Completed

### Attention

Do periodic inspections to the installation to make sure that all hardware is secure and tight.

In order to protect your bars/boards, please use only mild soap/non-abrasive products for cleaning.