



iBoard® by APS

PART#: IB-188C&H

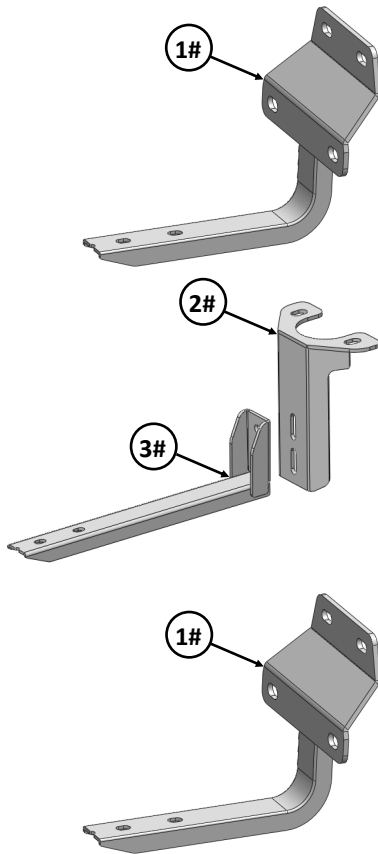
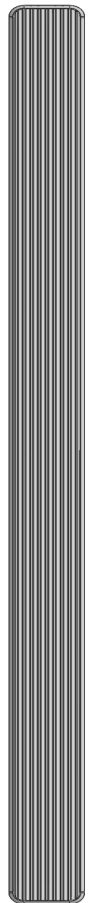
READ INSTRUCTIONS CAREFULLY BEFORE STARTING INSTALLATION. REMOVE CONTENTS FROM BOX AND VERIFY ALL PARTS ARE PRESENT. ASSISTANCE IS RECOMMENDED.

*ROCKER PANEL MOUNT
*NO DRILLING REQUIRED

Fastener Size	Tightening Torque (ft-lbs)	Required
6mm	6-7	X
8mm	16-18	√
10mm	31-32	X
12mm	56-58	X
14mm	92-94	X

PART LIST

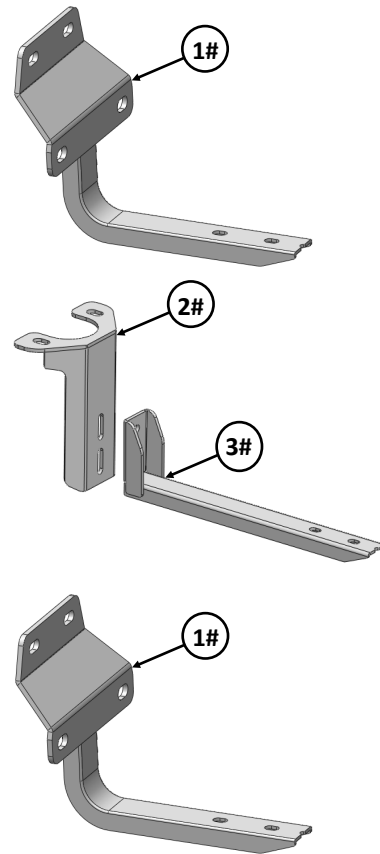
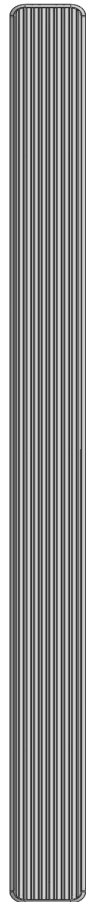
Driver Side Step Bar



Front



Passenger Side Step Bar





Mounting Bracket List

Item	QTY	Description	Item	QTY	Description
1#	4	Mounting Brackets	3#	2	Driver/Passenger Center Bar Brackets
2#	2	Driver/Passenger Center Mounting Brackets			

Hardware Package A (For Bracket Installation)

Item	QTY	Description	Item	QTY	Description
1#	12	M8 Plastic Washers	4#	4	M8X1.25-25mm Hex Bolts
2#	20	M8 Large Flat Washers	5#	4	M8 Lock Washers
3#	12	M8X1.25 Nylon Lock Nuts	6#	4	M8 Hex Nuts



1 #



2 #



3 #



4 #



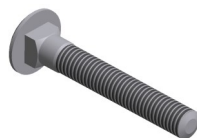
5 #



6 #

Hardware Package B (For Stainless Steel Step Bar Installation)

Item	QTY	Description	Item	QTY	Description
1#	12	M8X1.25-35mm Carriage Bolts	3#	12	M8 Nylon Lock Nuts
2#	12	M8 Large Flat Washers	4#	6	Sliders (Packed with Step Bars)



1 #



2 #



3 #

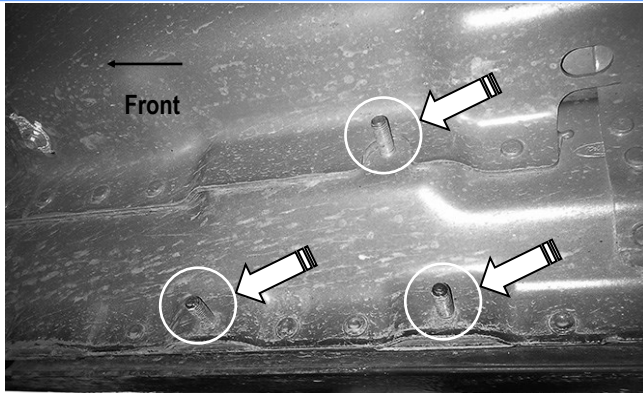


4 #



STEP 1

Start the installation under the passenger side of the vehicle. Locate the front factory running board mounting location along the inner side of the body, **(Fig 1)**.

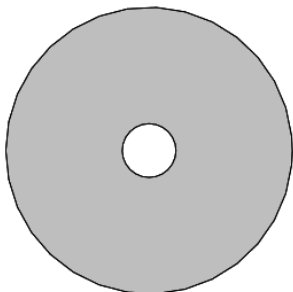


(Fig 1) Passenger Side Front Mounting Bracket Location

STEP 2

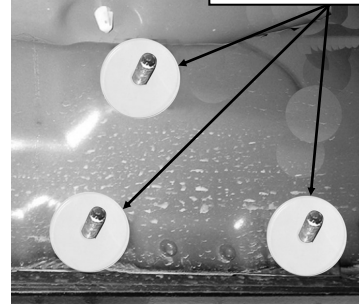
Slide (1) M8 Plastic Washer over each factory mounting stud in the body panel, **(Fig 2 & 3)**.

NOTE: The Plastic Washers are designed to prevent corrosion between the aluminum body panel and the steel mounting brackets.



(Fig 2) M8 Plastic Washer

(3) M8 Plastic Washers



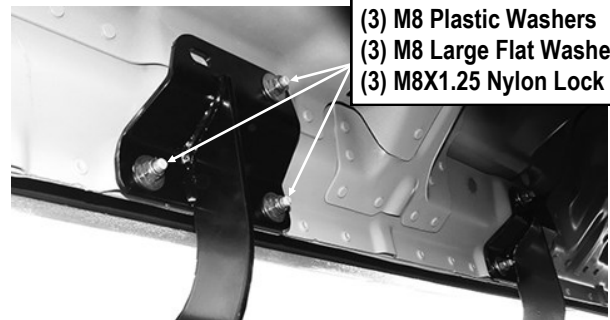
**Fig 3) Thread Plastic Washers Onto 3 Mounting Studs
(Example Passenger Side Front Mounting Location)**

STEP 3

Select Passenger Front Mounting Bracket. **Note:** All (4) Front and Rear Mounting Brackets are universal.

Attach the Mounting Bracket to the (3) factory studs with (3) M8 Large Flat Washers and (3) M8X1.25 Nylon Lock Nuts, **(Fig 4)**. Snug but do not fully tighten the hardware.

**(3) M8 Plastic Washers
(3) M8 Large Flat Washers
(3) M8X1.25 Nylon Lock Nuts**



(Fig 4) Passenger Front Mounting Bracket Installed (example)

STEP 4

Repeat **Steps 1—3** to install the Passenger Rear Mounting Bracket.

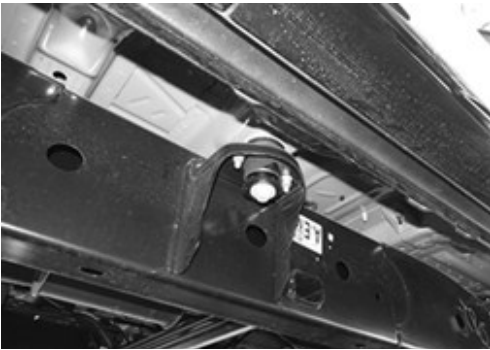


STEP 5

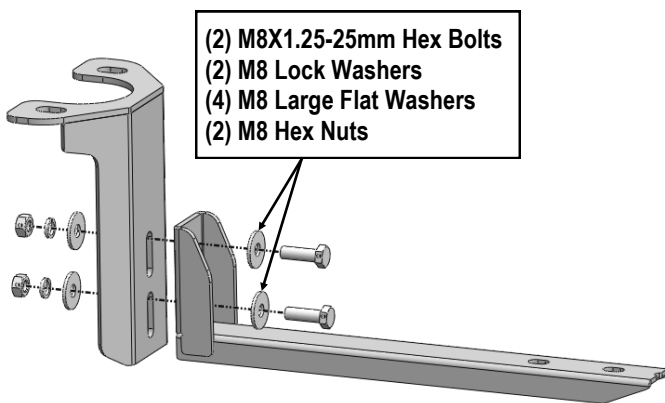
Move to the Passenger Side Center Mounting Location, (**Fig 5**). Assemble the **Passenger Center Bar Bracket** and **Passenger Center Mounting Bracket** using (2) M8X1.25-25mm Hex Bolts, (2) M8 Lock Washers, (4) M8 Large Flat Washers and (2) M8 Hex Nuts (**Fig 6**).

Note: Center Mounting Brackets and Bar Brackets are universal.

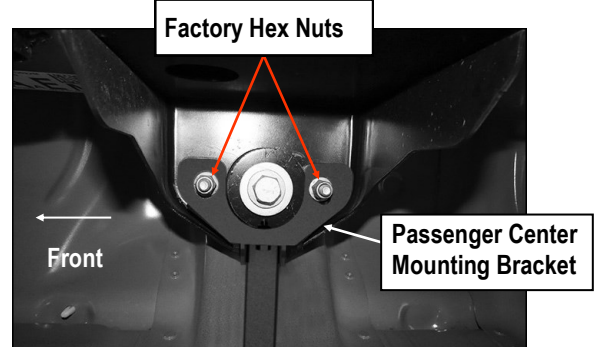
Remove the (2) factory hex flange nuts on the bottom of the mount. Attach the Passenger Center Mounting Bracket onto the body mounting location reuse the factory hex nuts (**Fig 7**).



(Fig 5) Passenger Center Bracket Location



(Fig 6) Passenger Center Brackets Assembly



(Fig 7) Reuse Factory Hex Nuts To Attach Passenger Center Mounting Bracket To Underside Of Center Body Mounting Location

STEP 6

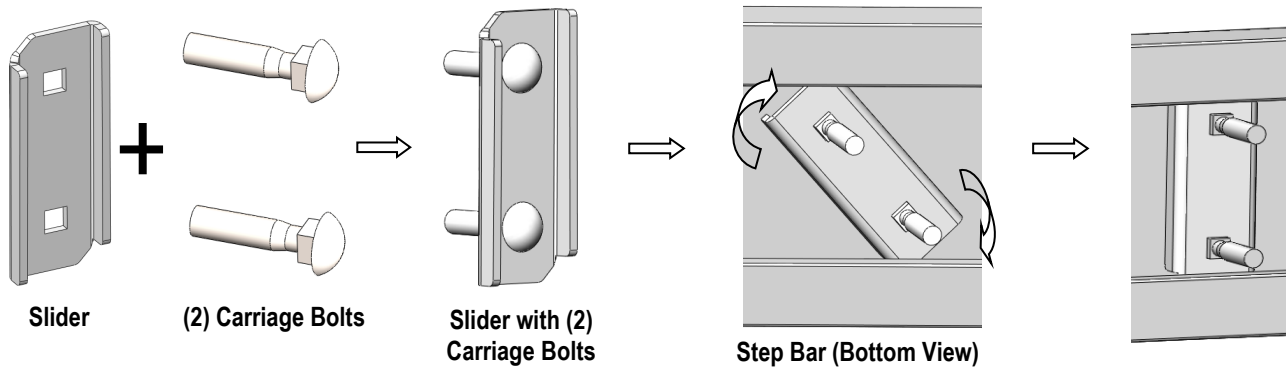
Once all (3) Passenger side mounting brackets are installed, then proceed to the Step Bar installation. (**Figs 8&9**)

- (1) Select (1) Slider and (2) M8X1.25-35mm Carriage Bolts;
- (2) Install (2) M8X1.25-35mm Carriage Bolts in (1) Slider.
- (3) Slide the Slider (with carriage bolts) to the **Step Bar**.
- (4) Repeat to install the other (2) sliders to the step bar.
- (5) Attach the Step Bar (with the Sliders) onto the installed mounting brackets. Position the Sliders to the installed brackets. Secure the Step Bar to the installed Brackets by using (6) M8 Large Flat Washers and (6) M8 Nylon Lock Nuts and (3) Sliders, (**Fig 9**). Do not fully tighten hardware at this time.

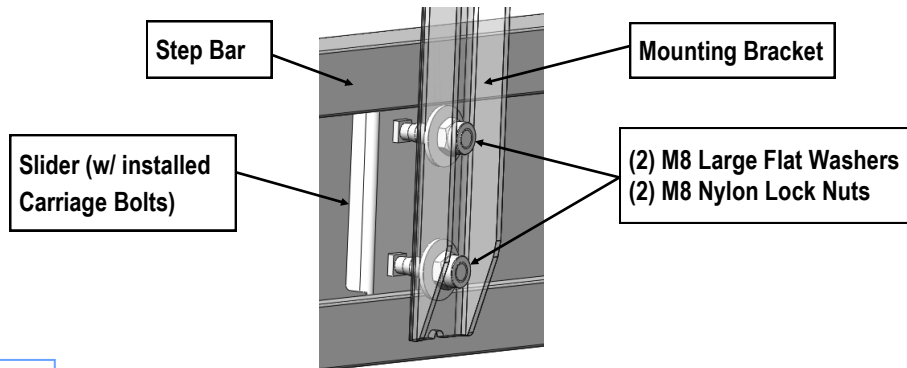
Note: The Sliders are packed with the Step Bars.

Level and adjust the Step Bar and fully tighten all hardware.

Repeat **Steps 1-6** for the other side Step Bar installation. **The installation is completed!!!**



(Fig 8) Slider Installation



(Fig 9) Step Bar Installation

Attention

Do periodic inspections to the installation to make sure that all hardware is secure and tight.
In order to protect your bars/boards, please use mild soap/non-abrasive products for cleaning only.