

iBoard®

iBoard® by APS

PART#: IB-188A&B

READ INSTRUCTIONS CAREFULLY BEFORE STARTING INSTALLATION. REMOVE CONTENTS FROM BOX AND VERIFY ALL PARTS ARE PRESENT. ASSISTANCE IS RECOMMENDED.

*ROCKER PANEL MOUNT
*NO DRILLING REQUIRED

Fastener Size	Tightening Torque (ft-lbs)
6mm	6-7
8mm	16-18
10mm	31-32
12mm	56-58
14mm	92-94

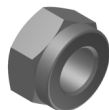
Item	QTY	Description	Item	QTY	Description
1#	4	Mounting Brackets	7#	4	M8X1.25-25mm Hex Bolts
2#	2	Driver/Passenger Center Mounting Brackets	8#	4	M8 Lock Washers
3#	2	Driver/Passenger Center Bar Brackets	9#	4	M8 Hex Nuts
4#	12	M8 Plastic Washers	10#	12	M6X1-20mm Square Head Bolts
5#	20	M8 Large Flat Washers	11#	12	M6 Large Flat Washers
6#	12	M8X1.25 Nylon Lock Nuts	12#	12	M6X1 Nylon Lock Nuts



4 #



5 #



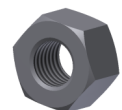
6 #



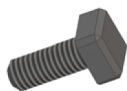
7 #



8 #



9 #



10 #



11 #



12 #

Customer Support: info@iboardauto.com

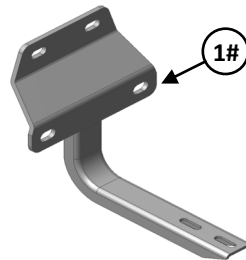
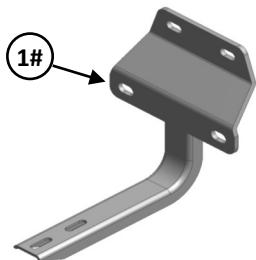
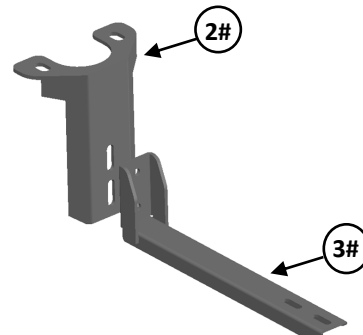
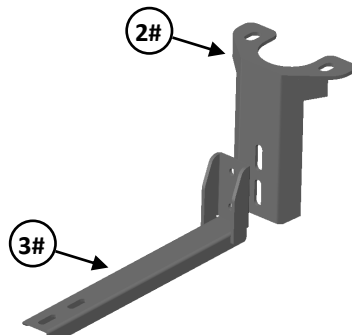
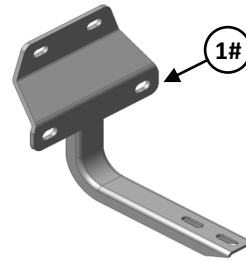
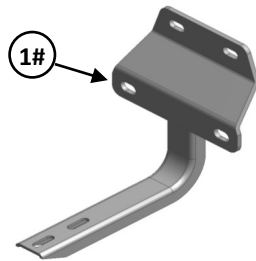
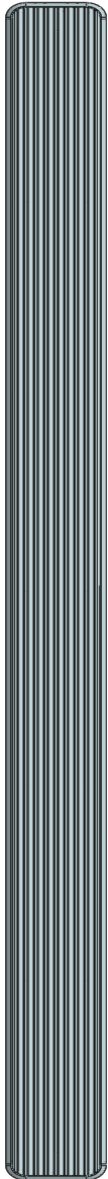
iBoard®

Driver

Front



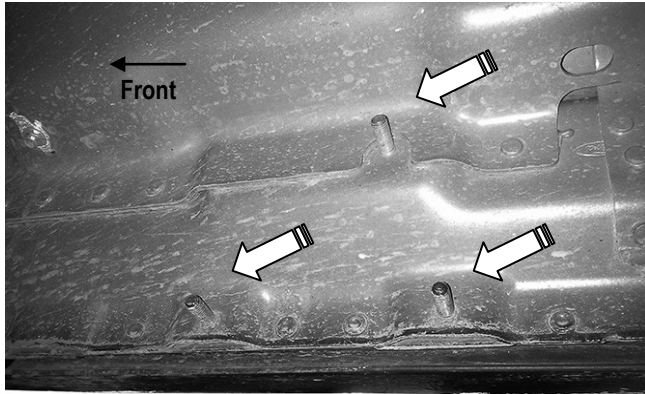
Passenger



iBoard®

STEP 1

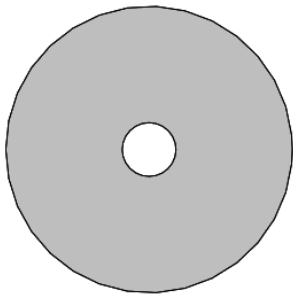
Start the installation under the passenger side of the vehicle. Locate the front factory running board mounting location along the inner side of the body, (Fig 1).



(Fig 1) Passenger Front Mounting Bracket Location

STEP 2

Slide (1) M8 Plastic Washer over each factory mounting stud in the body panel, (Fig 2 & 3). **IMPORTANT:** The Plastic Washers are designed to prevent corrosion between the aluminum body panel and the steel mounting brackets. **Do not install the Brackets without the Plastic Washers.**



(Fig 2) M8 Plastic Washer

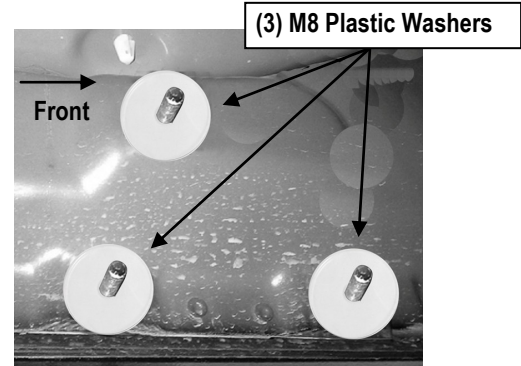
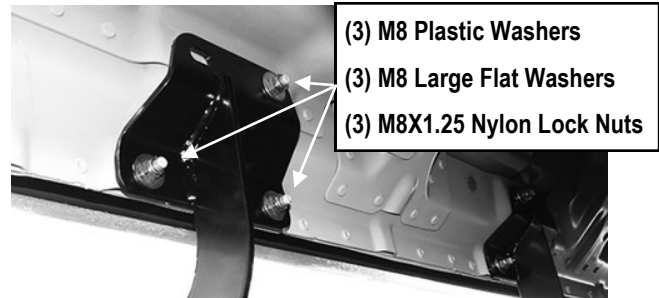


Fig 3) Thread Plastic Washers Onto 3 Mounting Studs. Passenger Side Front Mounting Location Pictured

STEP 3

Select Passenger Front Mounting Bracket. **Note:** All (4) Front and Rear Mounting Brackets are universal.

Attach the Mounting Bracket to the (3) factory studs with (3) M8 Large Flat Washers and (3) M8X1.25 Nylon Lock Nuts, (Fig 4). Snug but do not fully tighten the hardware.



(Fig 4) Passenger Front Mounting Bracket Installed

STEP 4

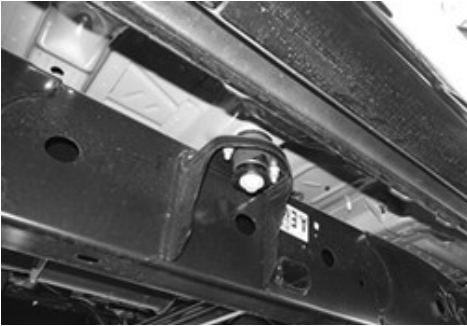
Repeat Steps 1—3 to install the Passenger Rear Mounting Bracket.

iBoard®

STEP 5

Move to the center body mounting location, (Fig 5). Assemble the **Passenger Center Bar Bracket** and **Passenger Center Mounting Bracket** using (2) M8X1.25-25mm Hex Bolts, (2) M8 Lock Washers, (4) M8 Large Flat Washers and (2) M8 Hex Nuts (Fig 6). **Note: Center Mounting Brackets and Bar Brackets are universal.**

Remove the (2) factory hex flange nuts on the bottom of the mount. Attach the Passenger Center Mounting Bracket onto the body mounting location reuse the factory hex nuts (Fig 7).



(Fig 5) Passenger Center Bracket Location

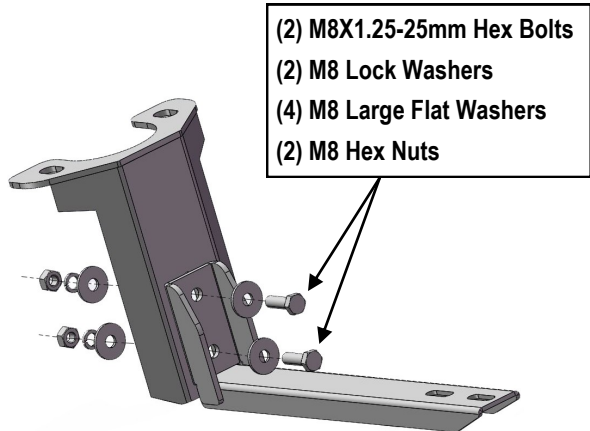
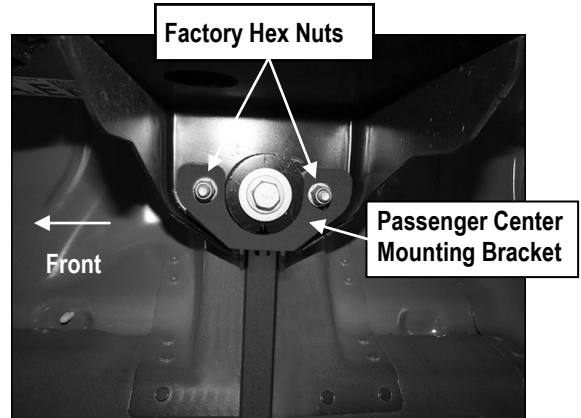


Fig 6



(Fig 7) Reuse Factory Hex Nuts To Attach Passenger Center Mounting Bracket To Underside Of Center Body Mounting Location

STEP 6

Select a Running Board. Slip (3) M6x1-20mm Square Head Bolts into each bottom channel (Fig 8). Carefully position the Running Board onto the (3) Mounting Brackets.

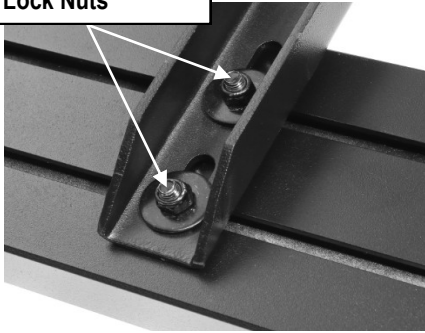
IMPORTANT: Do not slide the Running Board on the Brackets or the bottom surface of the board will be damaged. Attach the Running Board to each Mounting Brackets with (2) M6x1-20mm Square Head Bolts, (2) M6 Large Flat Washers and (2) M6 X1 Nylon Lock Nuts (Fig 9). Do not fully tighten at this time.



(Fig 8) Slip M6X1-20mm Square Head Bolts Into The Bottom Channels

iBoard®

(2)M6X1-20mm Square Head Bolts
(2)M6 Large Flat Washers
(2)M6X1 Nylon Lock Nuts



(Fig 9) Running Board Installed Onto Mounting Bracket

Attention

Do periodic inspections to the installation to make sure that all hardware is secure and tight.

In order to protect your bars/boards, please use only mild soap/non-abrasive products for cleaning.

STEP 7

Level and adjust the Running Board as necessary and fully tighten all hardware.

STEP 8

Repeat **Steps 1-7** for the driver side Running Board installation. The installation is completed (**Fig 10**).



(Fig 10) Installation Completed