

iBoard®

iBoard® by APS

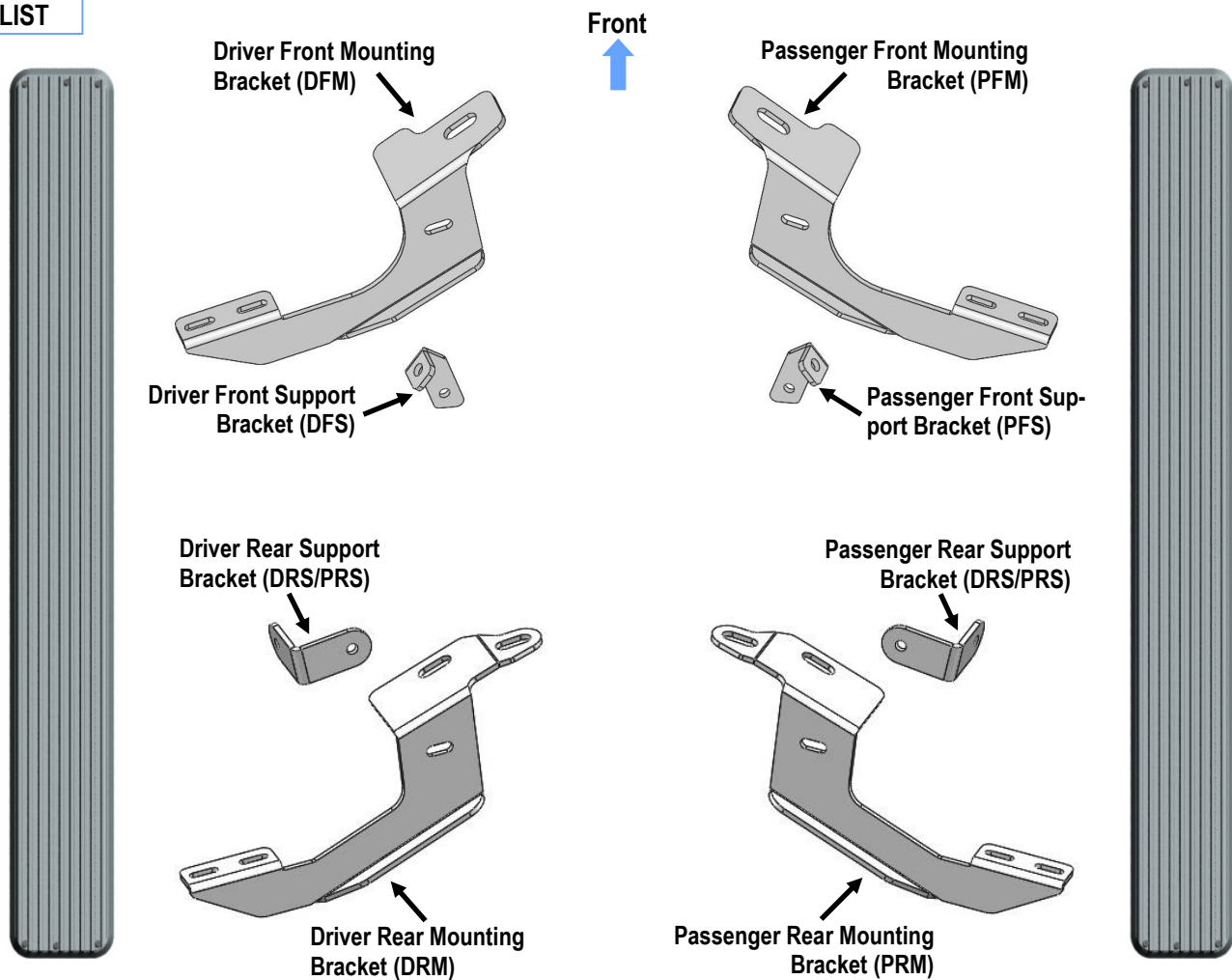
PART#: IB-152

READ INSTRUCTIONS CAREFULLY BEFORE STARTING INSTALLATION. REMOVE CONTENTS FROM BOX AND VERIFY ALL PARTS ARE PRESENT. ASSISTANCE IS RECOMMENDED.

*ROCKER PANEL MOUNT
*DRILLING IS REQUIRED

Fastener Size	Tightening Torque (ft-lbs)	Required
6mm	6-7	√
8mm	16-18	√
10mm	31-32	√
12mm	56-58	X
14mm	92-94	X

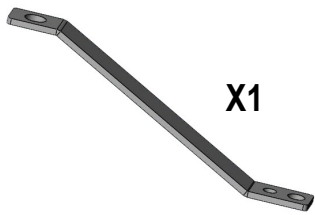
PART LIST



Customer Support: info@iboardauto.com

iBoard®

Hardware Package A (For Bracket Installation)



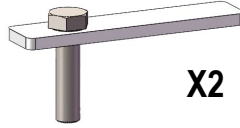
X1

Insert Installation Tool



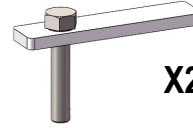
X2

M10X35 T-Bolt Plate



X2

M10X40 Bolt Plate



X2

M10X35 Bolt Plate



X6

M10 Plastic Washer



X6

M10 Flat Washer



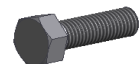
X6

M10 Lock Washer



X6

M10 Hex Nut



X8

M8X1.25-25mm Hex Bolt



X12

M8 Flat Washer



X8

M8 Lock Washer



X4

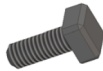
M8 Hex Nut



X4

M8 Rivet Nut

Hardware Package B (For Aluminum Step Bar Installation Only, Not Supply to Stainless Steel Step Bar)



X8

M6X1-20mm Square Head Bolt



X8

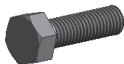
M6 Large Flat Washer



X8

M6 Nylon Lock Nut

Hardware Package C (For Stainless Steel Step Bar Installation Only, Not Supply to Aluminum Step Bar)



X8

M6X1-20mm Hex Bolt



X8

M6 Lock Washer



X8

M6 Flat Washer

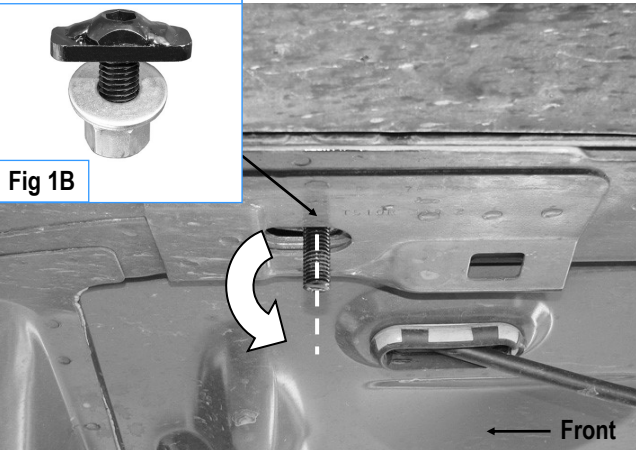
iBoard®

STEP 1

Start installation under the driver side front of the vehicle. Select and insert (1) M10 X 35 T-Bolt Plate into the factory oval hole in the floor panel, (Fig 1A & 1B). Rotate the Bolt Plate 90-degrees so that the plate is across in the oval hole. Hang the Driver Front Mounting Bracket (DFM) to the installed M10X35 T-Bolt Plate with (1) M10 Flat Washer, (1) M10 Lock Washer and (1) M10 Hex Nut, (Fig 2).

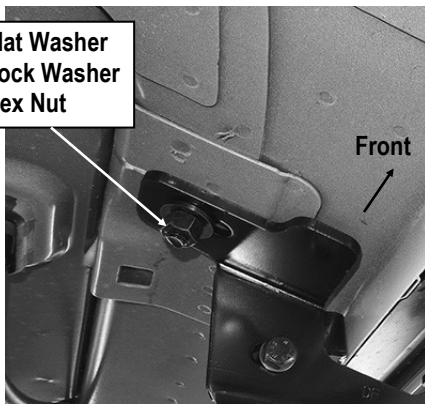
NOTE: Make sure that the mounting flange on the front Bracket is lined up properly with the indent in the floor panel. The front Mounting Bracket must sit flat against the floor panel. Do not fully tighten hardware at this time.

M10 X 35 T-Bolt Plate



(Fig 1A) M10X35 T-Bolt Plate Installation

- (1) M10 Flat Washer
- (1) M10 Lock Washer
- (1) M10 Hex Nut

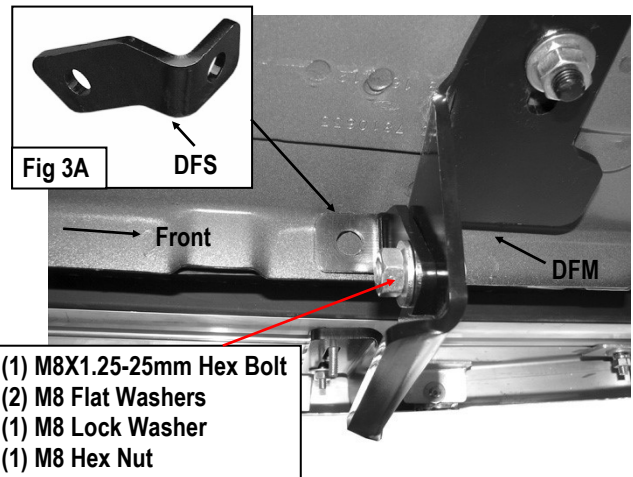


(Fig 2) Driver Front Mounting Bracket Installed

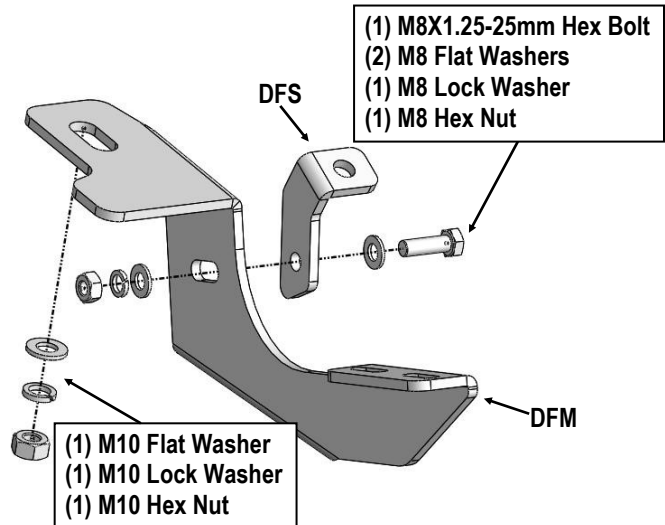
STEP 2

Select the Driver Front Support Bracket (DFS), (Fig 3A). Bolt the Driver Front Support Bracket to the back of the Driver Front Mounting Bracket with (1) M8X1.25-25mm Hex Bolt, (2) M8 Flat Washers, (1) M8 Lock Washer and (1) M8 Hex Nut, (Fig 3 & 4).

Note: Line up the mounting tab on the Support Bracket with the back of the pinch weld. Do not fully tighten hardware at this time.



(Fig 3) Attach Driver Front Support Bracket to DFM Bracket

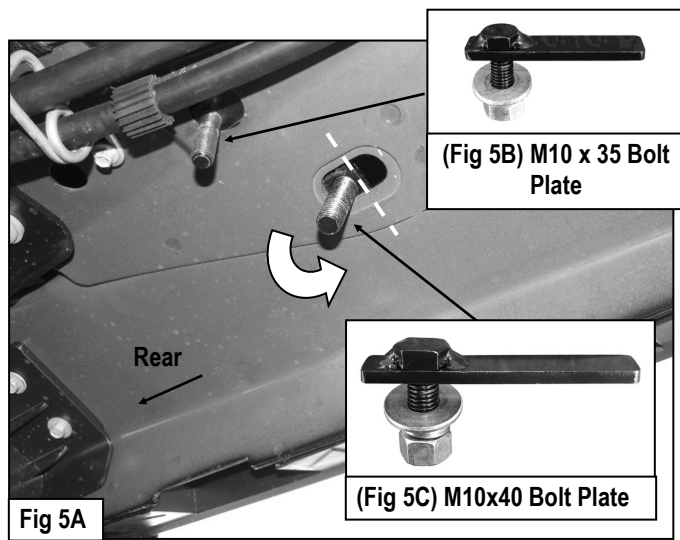


(Fig 4) Driver Side Front Brackets Installation

iBoard®

STEP 3

Move to the Driver Side Rear Mounting Location. Locate the oval and round holes on the floor panel on the driver side rear mounting location of the vehicle, **(Fig 5A)**. Insert (1) M10X35 Bolt Plate into the round hole, **(Fig 5B)**. Insert (1) M10X40 Bolt Plate into the oval hole next to the pinch weld, **(Fig 5C)**. Rotate t90-degree for the M10X40 Bolt Plate till the plate across on the oval hole.

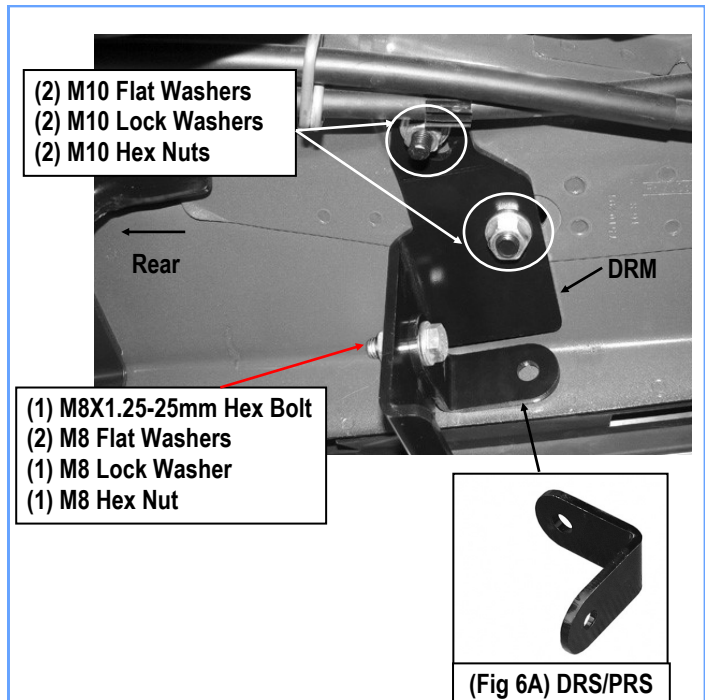


STEP 4

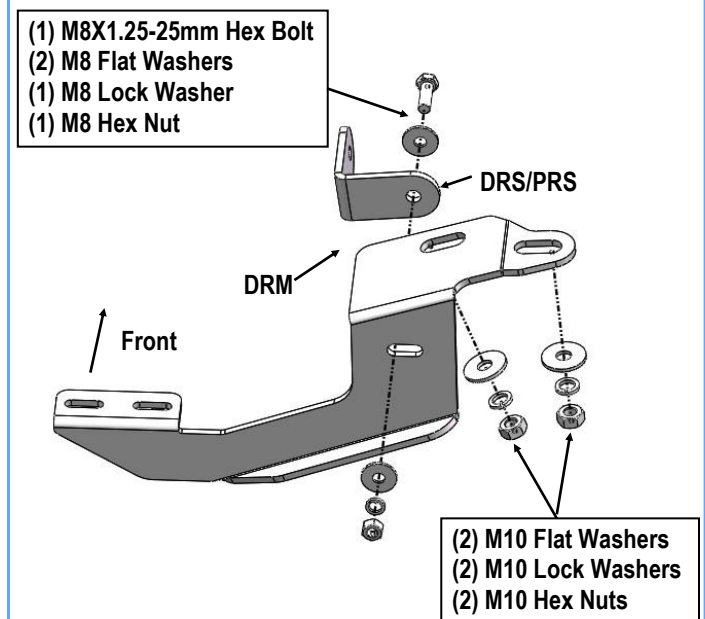
Attach the Driver Rear Mounting Bracket (DRM) to the (2) installed M10 Bolt Plates with (2) M10 Flat Washers, (2) M10 Lock Washers and (2) M10 Hex Nuts, **(Fig 6)**. Do not fully tighten hardware at this time.

STEP 5

Next, select (1) Driver Rear Support Bracket (DRS/PRS), **(Fig 6A)**. Bolt the Support Bracket to the front side of the Driver Rear Mounting Bracket (DRM) with (1) M8X1.25-25mm Hex Bolt, (2) M8 Flat Washers, (1) M8 Lock Washer and (1) M8 Hex Nut, **(Fig 6 & 7)**. Do not fully tighten hardware at this time.



(Fig 6) Driver Rear Mounting Bracket (DRM) Installation



(Fig 7) Driver Side Rear Brackets Installation

iBoard®

STEP 6

Once all (2) mounting brackets are installed, then proceed to the Step Bar installation. According to the style of Step Bar proceed to the correct installation STEPS.

Note: Aluminum Step Bar refer to STEP 7; Stainless Steel Step Bar skip to STEP 8.

STEP 7

Aluminum Step Bar Installation:

Select a **Aluminum Step Bar**. Slip (2) M6x1-20mm Square Head Bolts into each bottom channel (**Fig 8**). Carefully position the Step Bar onto the (2) Mounting Brackets.

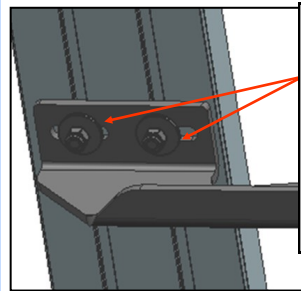
IMPORTANT: Do not slide the Step Bar on the Brackets or the bottom surface of the board will be damaged. Attach the Step Bar to each Mounting Brackets with (2) M6x1-20mm Square Head Bolts, (2) M6 Large Flat Washers and (2) M6 Nylon Lock Nuts, (**Fig 9**). Do not fully tighten at this time.

Level and adjust the Step Bar and fully tighten all hardware. Repeat **Steps 1-7** for the other side Step Bar installation.

NOTE: Level and adjust the Running Board and tighten the Mounting Brackets to Bolt Plate only. Do not tighten the hardware for the front and rear Support Bracket at this time.



(Fig 8) Slip M6X1-20mm Square Head Bolts Into The Bottom Channels



(2) M6X1-20mm Square Head Bolts
(2) M6 Large Flat Washers
(2) M6 Nylon Lock Nuts
IMPORTANT: TORQUE FOR 6MM FASTNERS MUST LESS THAN 6 -7 FT-LBS OR THE FASTNERS WILL BE DAMAGED!

(Fig 9) Running Board Installed Onto Mounting Bracket

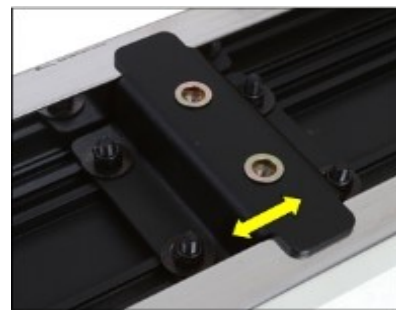
STEP 8

Stainless Steel Step Bar Installation:

Select a **Stainless Steel Step Bar** (with the U-Sliders installed on the Bar). Loose the U-Sliders, reposition the U-Sliders onto the board according to the (2) Installed Mounting Brackets location, (**Fig 10**). Re-secure the U-Sliders on the Step Bar. Attach the Step Bar to the installed Mounting Brackets with (4) M6X1-20mm Hex Bolts, (4) M6 Large Flat Washers & (4) M6 Lock Washers, (**Fig 11**). Do not fully tighten hardware at this time.

Level and adjust the Step Bar and fully tighten all hardware. Repeat **Steps 1-6 and 8** for the other side Step Bar installation.

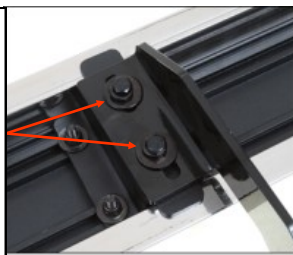
NOTE: Level and adjust the Running Board and tighten the Mounting Brackets to Bolt Plate only. Do not tighten the hardware for the front and rear Support Bracket at this time.



(Fig 10) Slide & line up the U-Slider with the installed mounting brackets along bottom channel

iBoard®

- (2) M6X1-20mm Hex Bolts
 - (2) M6 Large Flat Washers
 - (2) M6 Lock Washers
- IMPORTANT: TORQUE FOR 6MM FASTNERS MUST LESS THAN 6-7 FT-LBS OR THE FASTNERS WILL BE DAMAGED!**



(Fig 11) Step Bar Installed on Bracket Installed (Example)

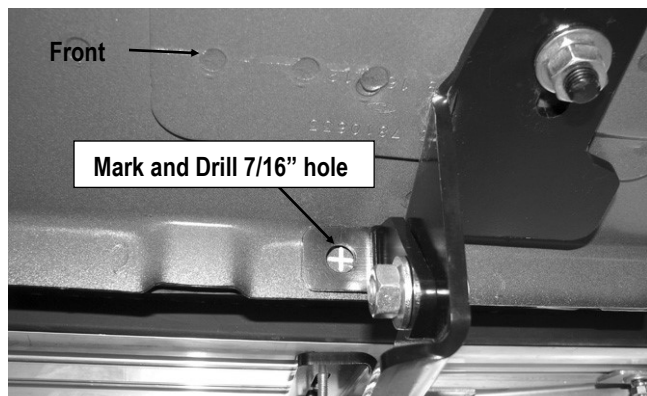
STEP 9

Return to the Driver Front Mounting Bracket (**DFM**) and Driver Front Support Bracket (**DFS**). Hold the Front Support Bracket firmly against the inner of the pinch weld. Mark the mounting hole location onto the back side of the pinch weld, (**Fig 12**).

Make sure the Running Board is level, and then drill a 7/16" hole on the pinch weld according to the mark.

CAUTION: Do not drill the hole too close to the bottom edge of the pinch weld.

VERY IMPORTANT! Be very careful and drill slowly through the pinch weld to avoid damaging the outer rocker panel cover. **NOTE:** Any cutting or drilling tool may break or shatter. Government regulations require safety glasses & equipment at all times when cutting or drilling.

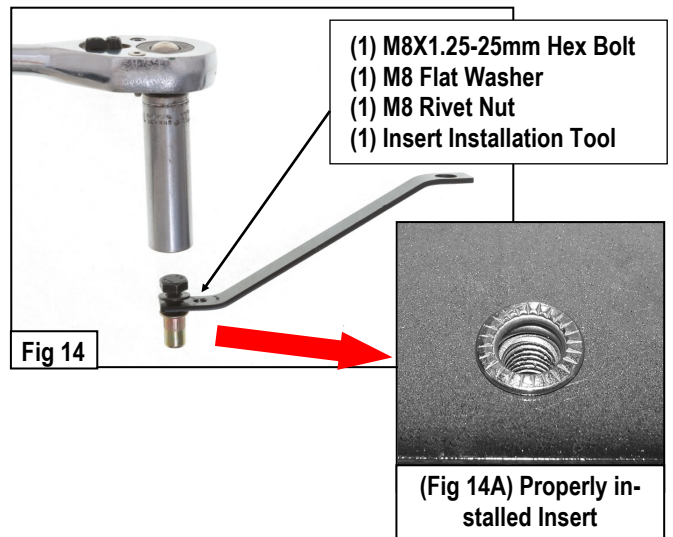


(Fig 12) Mark and Drill 7/16" Hole on pinch weld according to the Support Bracket location

STEP 10

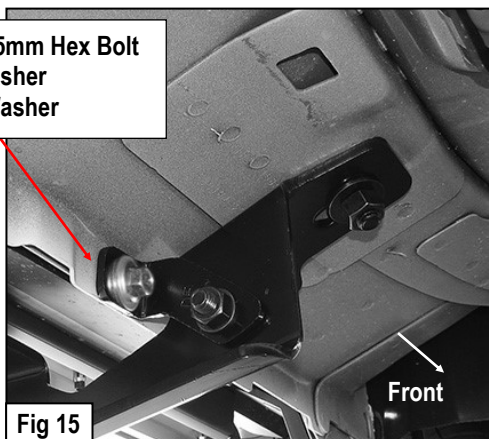
Select (1) Insert Installation Tool, (1) M8 Rivet Nut, (1) M8X1.25-25mm Hex Bolt and (1) M8 Flat Washer. Assemble the Insert Installation Tool as pictured in **Fig 14**. **NOTE: Select 8 mm hole on threaded tool (Fig 13).**

Hold the handle and push the M8 Rivet Nut into the drilled hole in the pinch weld. **NOTE:** Insert must fit snug in hole. If necessary, use a small hammer to carefully tap the Insert into the hole until the rim on the insert is flush against the pinch weld. Firmly hold the tool handle and tighten the Hex Bolt in the Tool to expand the M8 Rivet Nut in the hole. Continue until threads are pulled up close to the top of the Insert, (**Figs 14A & 14**). Remove the Tool and hardware. Bolt the Support Bracket to the M8 Rivet Nut with (1) M8x1-25mm Hex Bolt, (1) M8 Lock Washer and (1) M8 Flat Washer, (**Fig 15**). Do not fully tighten at this time.



iBoard®

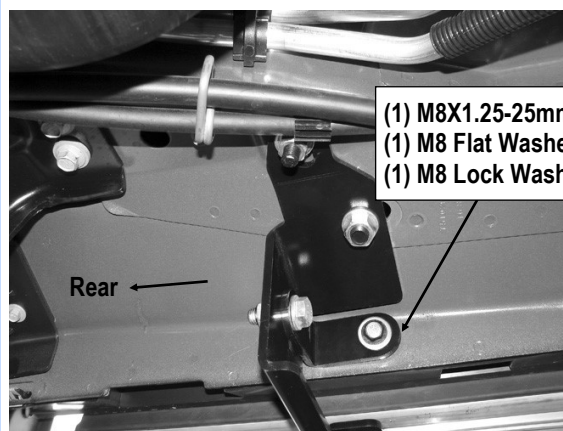
- (1) M8X1.25-25mm Hex Bolt
- (1) M8 Flat Washer
- (1) M8 Lock Washer



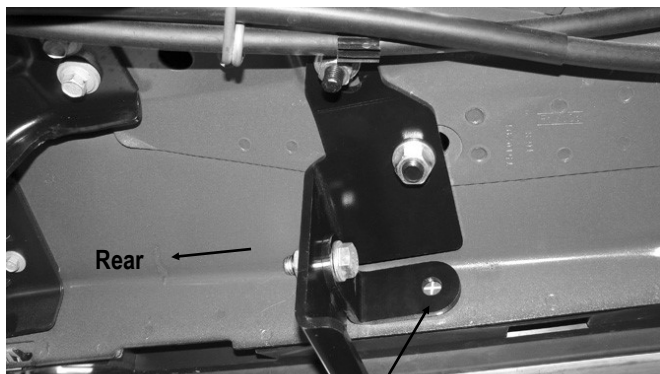
(Fig 17) M8 Rivet Nut Installed on Pinch Weld (Driver Rear Support Bracket Location)

STEP 11

Move to the driver side rear Mounting Bracket. Hold the Driver Rear Support Bracket (DRS/PRS) firmly against the back of the pinch weld. Repeat **Steps 7—8** to mark and drill the pinch weld and install the M8 Rivet Nut, (Fig 16 & 17). Reinstall the Support Bracket. Bolt the Support Bracket to the Insert with (1) M8x1-25mm Hex Bolt, (1) M8 Lock Washer and (1) M8 Flat Washer, (Fig 18). Tighten the front and rear Bracket hardware only at this time.



(Fig 18) Driver Rear Support Bracket Installed



Mark and drill a 7/16" hole on pinch weld according to the location of Support Bracket

(Fig 16) Mark & Drill hole on the pinch weld according to the Driver Rear Support Bracket Location

STEP 12

Level and adjust the Running Board again, fully tighten all hardware as necessary. Repeat **Steps 1-12** for the other side Running Board installation.

The installation is completed.

Attention

Do periodic inspections to the installation to make sure that all hardware is secure and tight.

In order to protect your bars/boards, please use only mild soap/non-abrasive products for cleaning.