

iBoard®

iBoard® by APS

PART#: IB-032

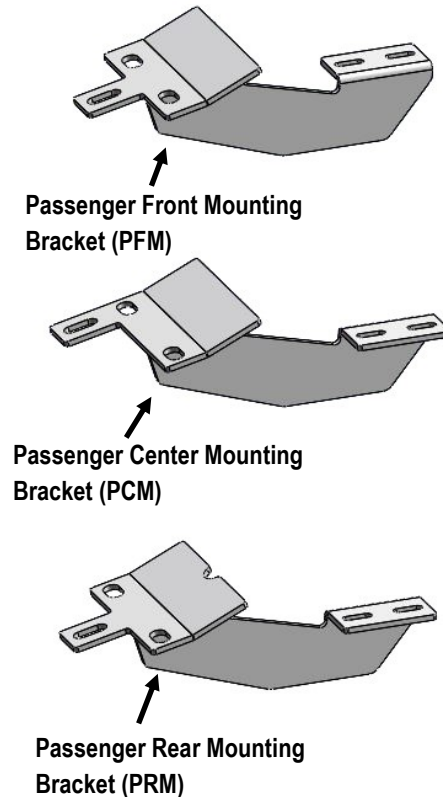
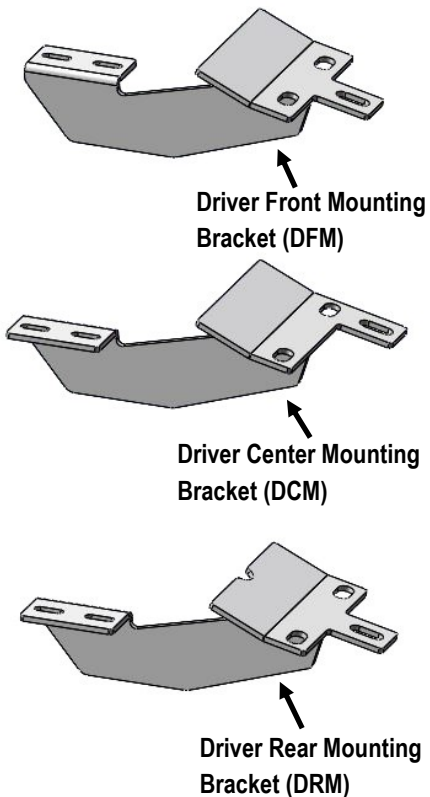
READ INSTRUCTIONS CAREFULLY BEFORE STARTING INSTALLATION. REMOVE CONTENTS FROM BOX AND VERIFY ALL PARTS ARE PRESENT. ASSISTANCE IS RECOMMENDED.

*BODY FRAME MOUNT
*NO DRILLING REQUIRED

Fastener Size	Tightening Torque (ft-lbs)	Required
6mm	6-7	√
8mm	16-18	X
10mm	31-32	√
12mm	56-58	X
14mm	92-94	X

PART LIST

Front
↑



Customer Support: info@iboardauto.com

iBoard®

Hardware Package A (For Bracket Installation)



83mm Tube Spacer



65mm Tube Spacer



M10X1.5-120mm Hex Bolt



M10X1.5-100mm Hex Bolt



M10X1.5-30mm Hex Bolt



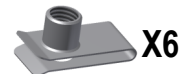
M10 Flat Washer



M10 Lock Washer



M10 Hex Nut



M10 Clip Nut

Hardware Package B (For Aluminum Step Bar Installation Only, Not Supply to Stainless Steel Step Bar)



M6X1-20mm Square Head Bolt



M6 Large Flat Washer



M6 Nylon Lock Nut

Hardware Package C (For Stainless Steel Step Bar Installation Only, Not Supply to Aluminum Step Bar)



M6X1-20mm Hex Bolt



M6 Lock Washer



M6 Flat Washer

STEP 1

Start installation from the driver side of the vehicle. From underside of the vehicle locate (2) Christmas trees fasteners in the front and (2) in the back. Use a flat screw driver and a pair of pliers to remove Christmas trees fasteners from side panel, and then remove plastic brackets with studs from pinch weld, (Fig 1A).

NOTE: Some 08 Models may be equipped with side valance (Fig 1B); if so you will need to permanently remove it from vehicle .



Remove the two Christmas Tree fasteners holding the plastic bracket with threaded plastic studs attached to side panel

Fig 1A

iBoard®

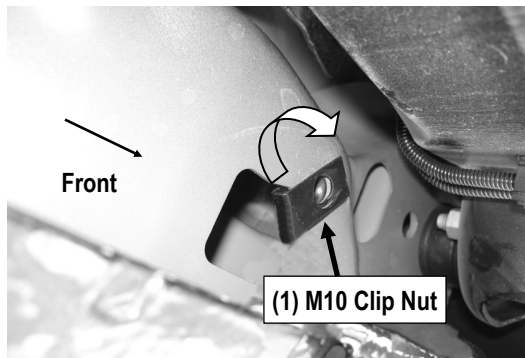


Some 08 Models may be equipped with side valance, if so you will need to permanently remove it from vehicle

Fig 1B

STEP 2

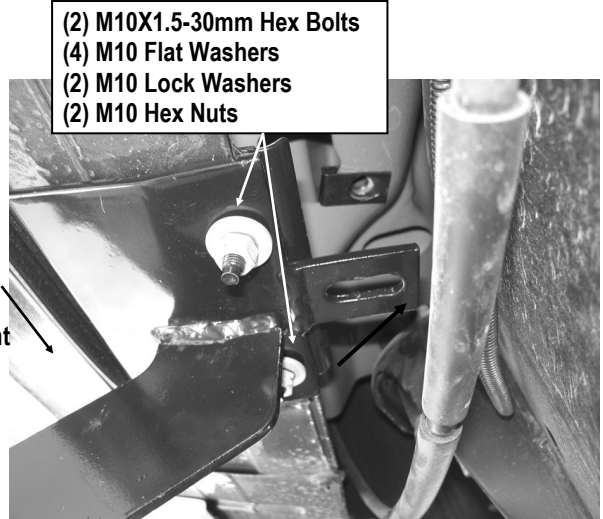
Start installation from the driver side of the vehicle. Locate the (2) front factory holes on the driver side floor panel located by the front tire. With the threaded nut facing up, insert (1) M10 Clip Nut through larger hole. Orient Clip Nut to engage in the smaller hole (Fig 2).



(Fig 2) Insert (1) M10 Clip Nut

STEP 3

Select the Driver Front Mounting Bracket (DFM). Attach the Front Mounting Bracket to pinch weld with (2) M10X1.5-30mm Hex Bolts, (4) M10 Flat Washers, (2) M10 Lock Washers and (2) M10 Hex Nuts, (Figs 3 & 5). Do not fully tighten hardware at this time.

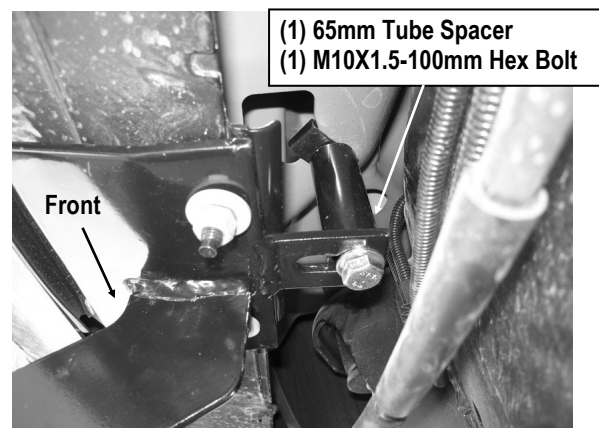


(Fig 3) Driver Front Mounting Bracket Installation

STEP 4

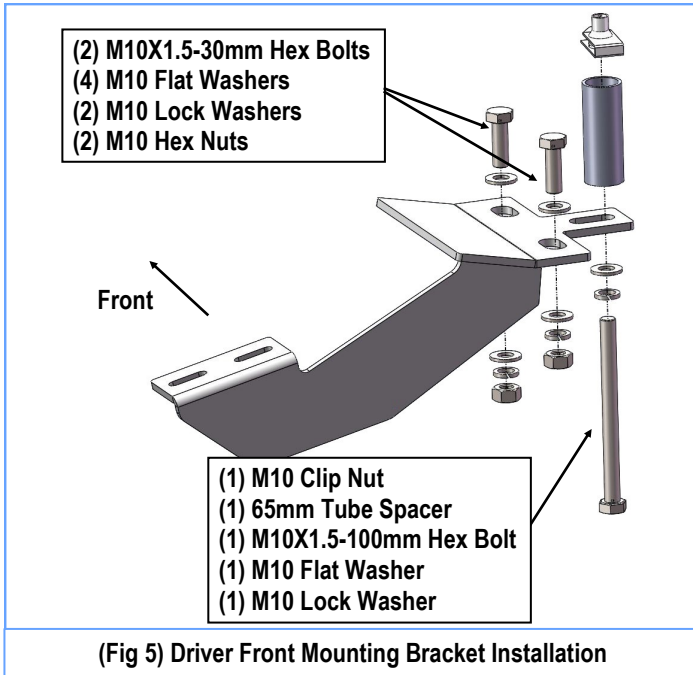
Place (1) short 65mm Tube Spacer between the tab on the Driver Front Mounting Bracket and the installed M10 Clip Nut.

Attach the Driver Front Mounting Bracket to Clip Nut with (1) M10X1.5-100mm Hex Bolt, (1) M10 Flat Washer and (1) M10 Lock Washers, (Figs 4 & 5). Do not fully tighten at this time.



(Fig 4) Driver Front Mounting Bracket Installation

iBoard®



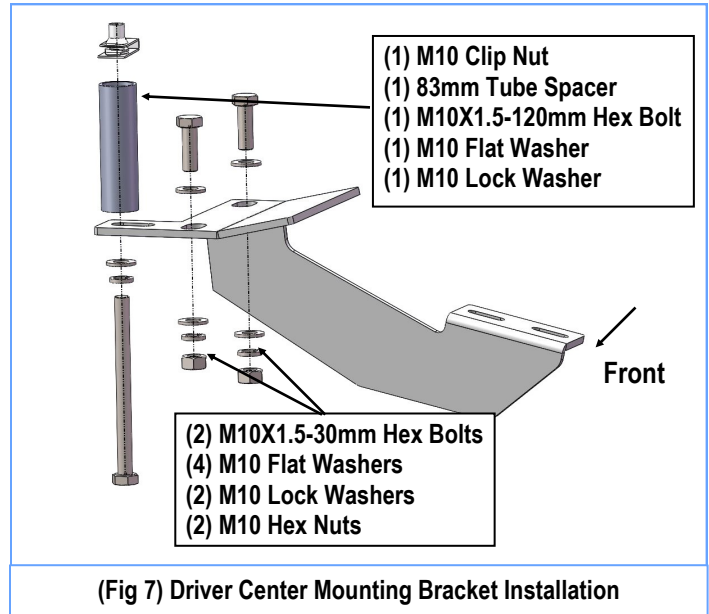
STEP 5

Move to center & rear mounting location. Repeat **Steps 1 – 4** for Driver Center & Rear Mounting Brackets. Depending upon your vehicle, the center factory hole might be too small for the M10 Clip Nut, file the Clip Nut until you are able to mount it, (**Fig 6**).

NOTE: You will be using (1) 83mm Tube Spacer with (1) M10X1.5-120mm Hex Bolt on the Driver Center and Rear Mounting Brackets, (**Fig 7**). Do not fully tighten at this time.



(Fig 6) File The Clip Nut



STEP 6

Once all (3) mounting brackets are installed, then proceed to the Step Bar installation. According to the style of Step Bar proceed to the correct installation STEPS.

Note: Aluminum Step Bar refer to STEP 7; Stainless Steel Step Bar skip to STEP 8.

STEP 7

Aluminum Step Bar Installation:

Select a **Aluminum Step Bar**. Slip (3) M6x1-20mm Square Head Bolts into each bottom channel (**Fig 8**). Carefully position the Step Bar onto the (3) Mounting Brackets.

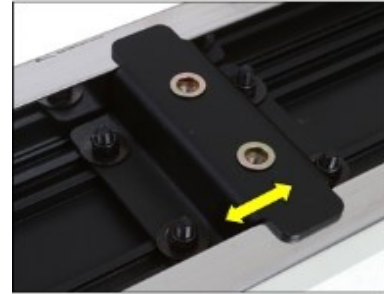
IMPORTANT: Do not slide the Step Bar on the Brackets or the bottom surface of the board will be damaged. Attach the Step Bar to each Mounting Brackets with (2) M6x1-20mm Square Head Bolts, (2) M6 Large Flat Washers and (2) M6 Nylon Lock Nuts, (**Fig 9**). Do not fully tighten at this time.

Level and adjust the Step Bar and fully tighten all hardware. Repeat **Steps 1-7** for the other side Step Bar installation. **The installation is completed!!!**

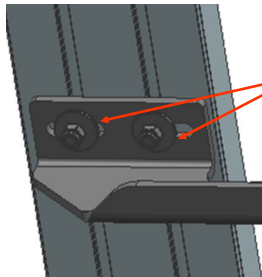
iBoard®



(Fig 8) Slip M6X1-20mm Square Head Bolts Into The Bottom Channels



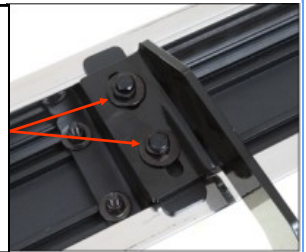
(Fig 10) Slide & line up the U-Slider with the installed mounting brackets along bottom channel



(2) M6X1-20mm Square Head Bolts
(2) M6 Large Flat Washers
(2) M6 Nylon Lock Nuts
IMPORTANT: TORQUE FOR 6MM FASTNERS MUST LESS THAN 6-7 FT-LBS OR THE FASTNERS WILL BE DAMAGED!

(Fig 9) Running Board Installed Onto Mounting Bracket

(2) M6X1-20mm Hex Bolts
(2) M6 Large Flat Washers
(2) M6 Lock Washers
IMPORTANT: TORQUE FOR 6MM FASTNERS MUST LESS THAN 6-7 FT-LBS OR THE FASTNERS WILL BE DAMAGED!



(Fig 11) Step Bar Installed On Bracket Installed

STEP 8

Stainless Steel Step Bar Installation:

Select a **Stainless Steel Step Bar** (with the U-Sliders installed on the Bar). Loose the U-Sliders, reposition the U-Sliders onto the board according to the (3) Installed Mounting Brackets location, (Fig 10). Re-secure the U-Sliders on the Step Bar. Attach the Step Bar to the installed Mounting Brackets with (6) M6X1-20mm Hex Bolts, (6) M6 Large Flat Washers & (6) M6 Lock Washers, (Fig 11). Do not fully tighten hardware at this time. Level and adjust the Step Bar and fully tighten all hardware. Repeat **Steps 1-6 and 8** for the other side Step Bar installation. **The installation is completed!!!**

Attention

Do periodic inspections to the installation to make sure that all hardware is secure and tight.

In order to protect your bars/boards, please use only mild soap/non-abrasive products for cleaning.