

# iBoard®

## iBoard® by APS

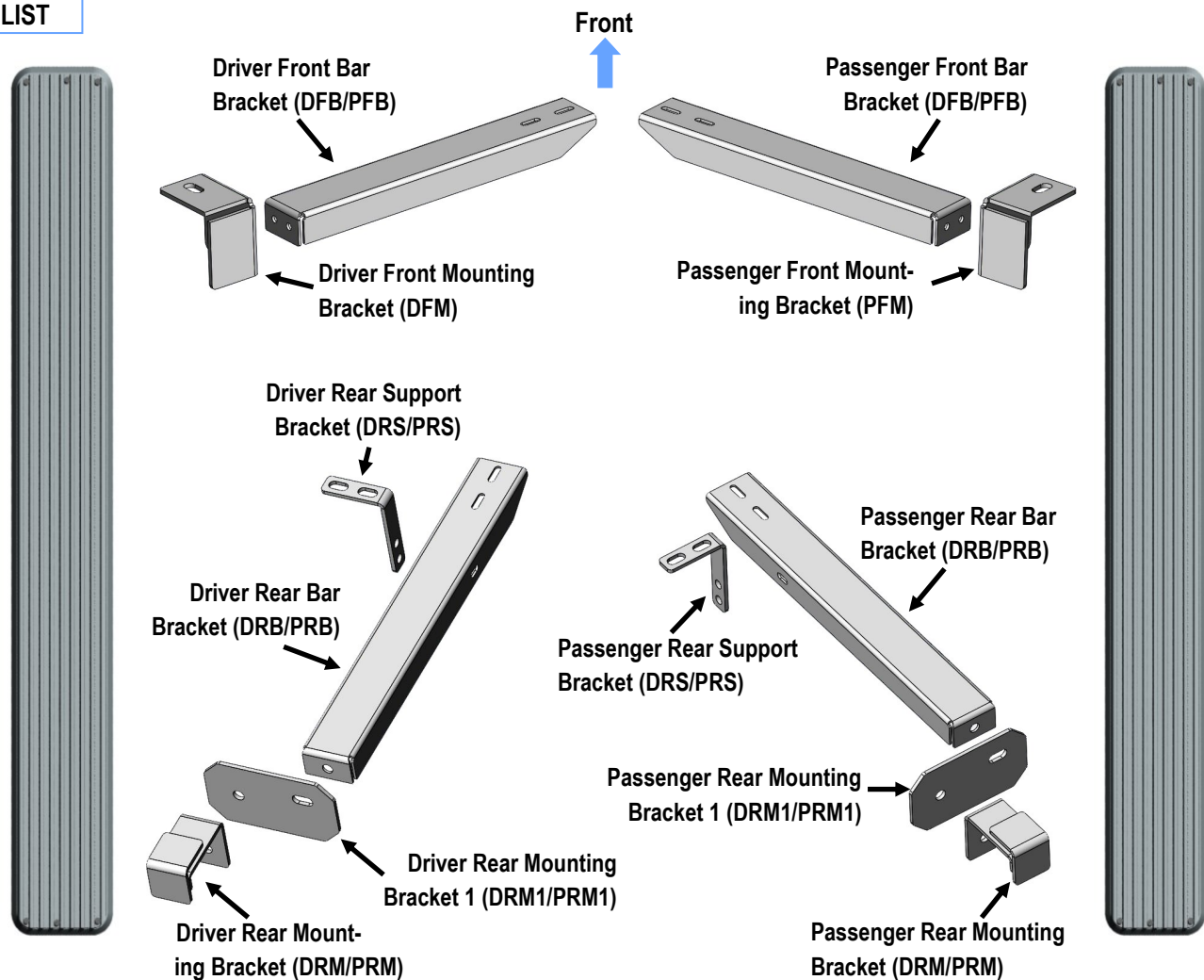
PART#: IB-210

READ INSTRUCTIONS CAREFULLY BEFORE STARTING INSTALLATION. REMOVE CONTENTS FROM BOX AND VERIFY ALL PARTS ARE PRESENT. ASSISTANCE IS RECOMMENDED.

\*ROCKER PANEL MOUNT  
\*NO DRILLING REQUIRED

Fastener Size	Tightening Torque (ft-lbs)	Required
6mm	6-7	√
8mm	16-18	√
10mm	31-32	√
12mm	56-58	√
14mm	92-94	X

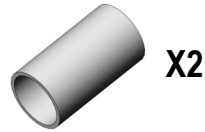
### PART LIST



Customer Support: [info@iboardauto.com](mailto:info@iboardauto.com)

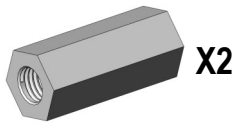
# iBoard®

## Hardware Package A (For Bracket Installation)



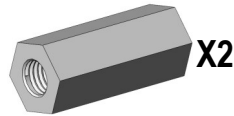
**X2**

Φ32 Tube Spacer



**X2**

7/16"-20 x 1.75" Fine Thread Coupling Nut



**X2**

7/16"-14 x 1.75" Coarse Thread Coupling Nut



**X2**

7/16"-20 Hex Bolt



**X2**

7/16"-14 Hex Bolt



**X4**

M12X1.75-35mm Hex Bolt



**X12**

M12 Flat Washer



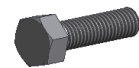
**X8**

M12 Lock Washer



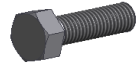
**X4**

M12X1.75 Hex Nut



**X2**

M10X1.5-25mm Hex Bolt



**X4**

M8X1.25-30mm Hex Bolt



**X2**

M8X1.25-20mm Hex Bolt



**X12**

M8 Flat Washer



**X6**

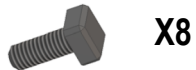
M8 Lock Washer



**X6**

M8X1.25 Hex Nut

## Hardware Package B (For Aluminum Step Bar Installation Only, Not Supply to Stainless Steel Step Bar)



**X8**

M6X1-20mm Square Head Bolt



**X8**

M6 Large Flat Washer



**X8**

M6X1 Nylon Lock Nut

## Hardware Package C (For Stainless Steel Step Bar Installation Only, Not Supply to Aluminum Step Bar)



**X8**

M6X1-20mm Hex Bolt



**X8**

M6 Lock Washer



**X8**

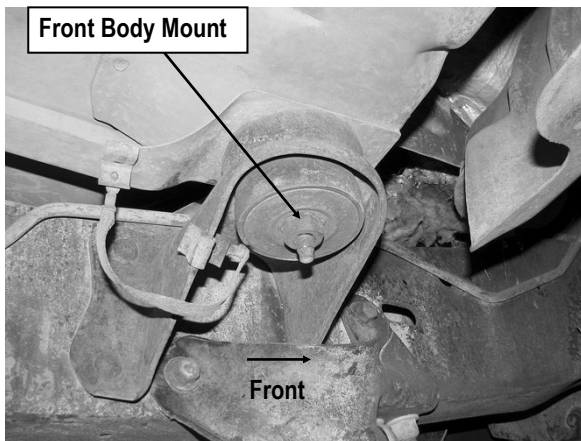
M6 Flat Washer

# iBoard®

## STEP 1

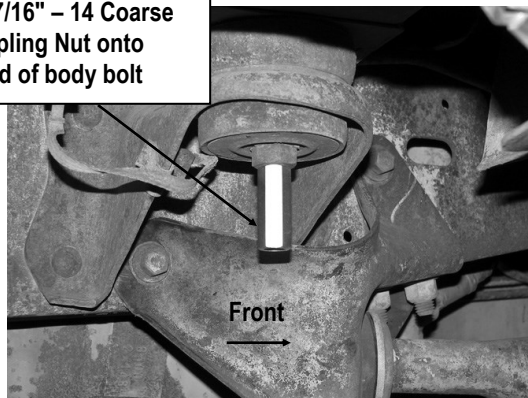
Starting under the passenger side of the vehicle, locate the factory front body mount, (**Fig 1**). Select (1) 7/16"-14 Coarse Thread Coupling Nut.

**IMPORTANT:** The hardware kit includes (4) Coupling Nuts, (2) 7/16"-14 Hex Bolts and (2) 7/16"-20 Hex Bolts. Verify that you have selected the coarse thread Coupling Nut or damage to the body mount bolt or Coupling Nut may result. Thread the Coupling Nut onto the exposed end of the body mount bolt, (**Fig 2**). Tighten hardware at this time.



(Fig 1) Passenger Side Front Mounting Location

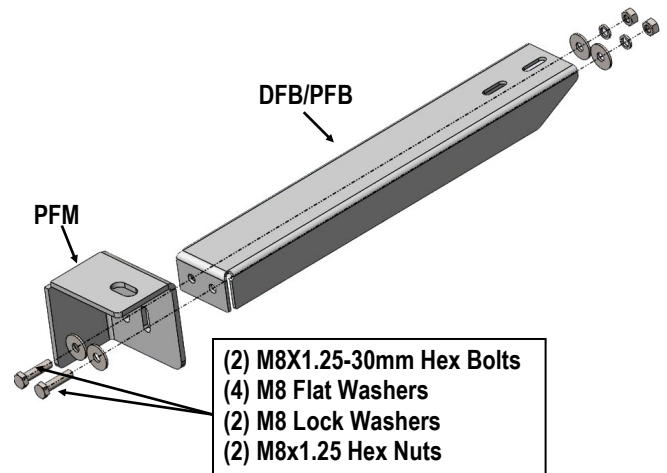
Thread the 7/16" - 14 Coarse Thread Coupling Nut onto threaded end of body bolt



(Fig 2) 7/16"-14 Coarse Thread Coupling Nut Installation

## STEP 2

Assemble Passenger Front Mounting Bracket (**PFM**) and Passenger Front Bar Bracket (**DFB/PFB**) with (2) M8X1.25-30mm Hex Bolts, (4) M8 Flat Washers, (2) M8 Lock Washers and (2) M8x1.25 Hex Nuts, (**Fig 3**). Do not fully tighten hardware at this time.



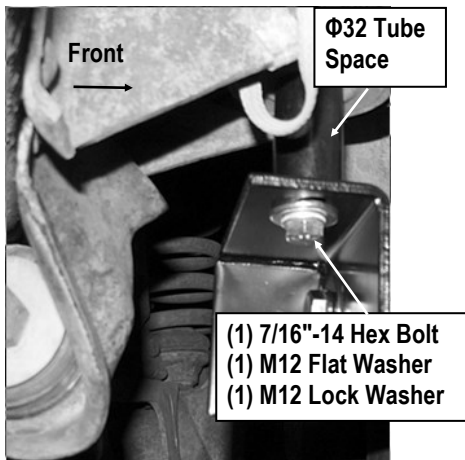
(Fig 3) Passenger Side Front Brackets Assembly

## STEP 3

Next, select the assembled Passenger Front Mounting Bracket (**PFM**) and (1)  $\Phi$ 32 Tube Spacer. Slide the  $\Phi$ 32 Tube Spacer over the Coupling Nut, (**Fig 4**). Hold the Front Mounting Bracket in position against the Coupling Nut and Spacer. Secure the Bracket to the Coupling Nut with (1) 7/16"-14 Hex Bolt, (1) M12 Flat Washer and (1) M12 Lock Washer.

**IMPORTANT:** Verify that you have selected the coarse thread 7/16"-14X1.75" Hex Bolt or damage to the Coupling Nut may result. Do not fully tighten hardware at this time.

# iBoard®



(Fig 4) Passenger Front Mounting Bracket (PFM) Installation

## STEP 4

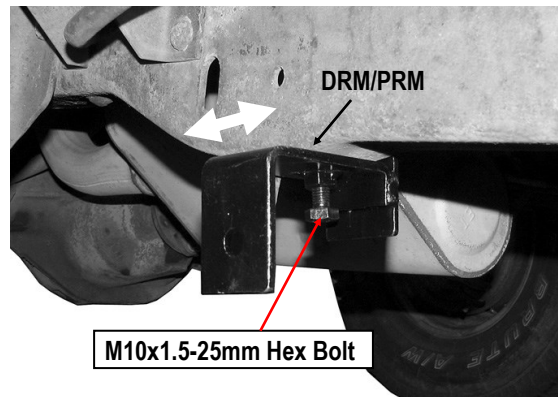
Move to Passenger Side Rear Mounting Location. Select (1) Passenger Rear Mounting Bracket (**DRM/PRM**). Thread (1) M10X1.5-25mm Hex Bolt into the hex nut welded onto the Bracket. Slide the Bracket onto the bottom of the frame rail, (**Fig 5**).

Select (1) Passenger Rear Mounting Bracket 1 (**DRM1/PRM1**). Bolt it to the Passenger Rear Mounting Bracket (**DRM/PRM**) with (1) M12x1.75-35mm Hex Bolt, (2) M12 Flat Washers, (1) M12 Lock Washer and (1) M12x1.75 Hex Nut, (**Fig 6**). Do not fully tighten hardware at this time.

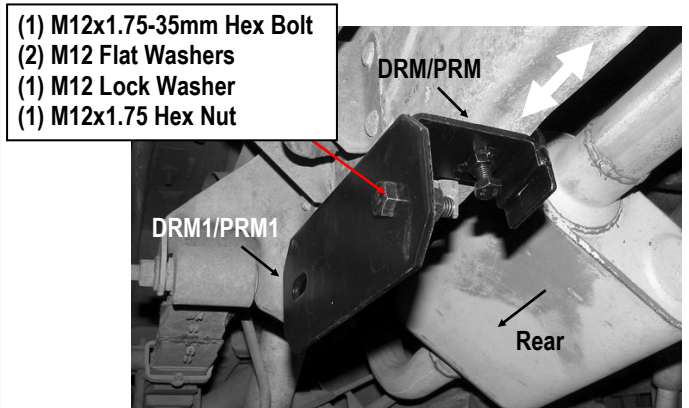
**Note:** Loosen M10X1.5-25mm Hex Bolt in Passenger Rear Mounting Bracket (**DRM/PRM**) to slide Assembly Bracket forward or backward on frame channel to line up with the end of the Running Board. Once properly lined up, tighten M10X1.5-25mm Hex Bolt.

## STEP 5

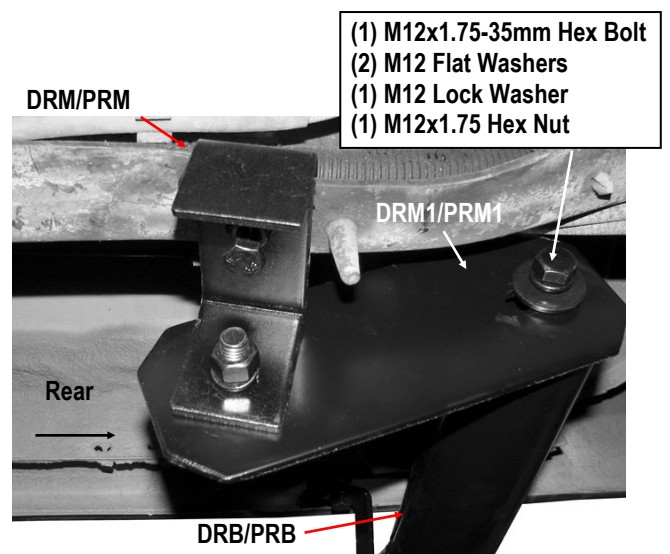
Select a Passenger Rear Bar Bracket (**DRB/PRB**) and attach to the Passenger Rear Mounting Bracket 1 (**DRM1/PRM1**) with (1) M12x1.75-35mm Hex Bolt, (2) M12 Flat Washers, (1) M12 Lock Washer and (1) M12x1.75 Hex Nut. (**Fig 7 & 10**). Do not fully tighten hardware at this time.



(Fig 5) Passenger Rear Mounting Bracket (DRM/PRM) Installation



(Fig 6) Passenger Rear Mounting Bracket 1 Installation



(Fig 7) Passenger Rear Bar Bracket Installation



# iBoard®

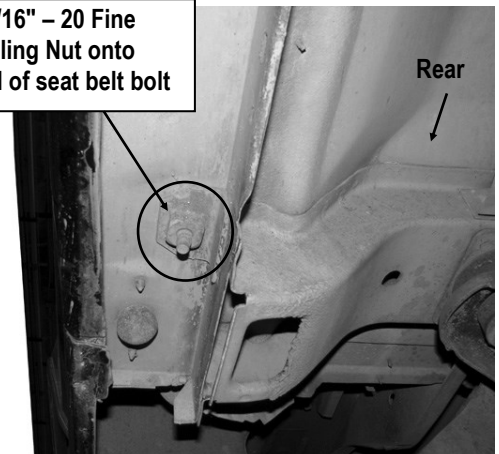
## STEP 6

Locate the exposed threaded end of the outer seat belt bolt in the bottom of the floor panel, **(Fig 8)**. Select (1) 7/16"-20 Fine Thread Coupling Nut. Thread the Coupling Nut onto the threaded end of the seat belt bolt. Tighten the Coupling Nut.

Select (1) Passenger Rear Support Bracket (**DRS/PRS**). Bolt the Support Bracket to the Coupling Nut with (1) 7/16"-20 Hex Bolt, (1) M12 Flat Washer and (1) M12 Lock Washer, **(Fig 9)**. Then bolt the Passenger Rear Support Bracket (**DRS/PRS**) to the Passenger Rear Bar Bracket (**DRB/PRB**) with (1) M8X1.25-20mm Hex Bolt, (2) M8 Flat Washers, (1) M8 Lock Washer and (1) M8x1.25 Hex Nut, **(Fig 10)**.

**IMPORTANT:** Verify that you have selected the 7/16-20 Hex Bolt or damage to the Bolt or Coupling Nut may result. Do not fully tighten hardware at this time.

Thread the 7/16" – 20 Fine Thread Coupling Nut onto threaded end of seat belt bolt

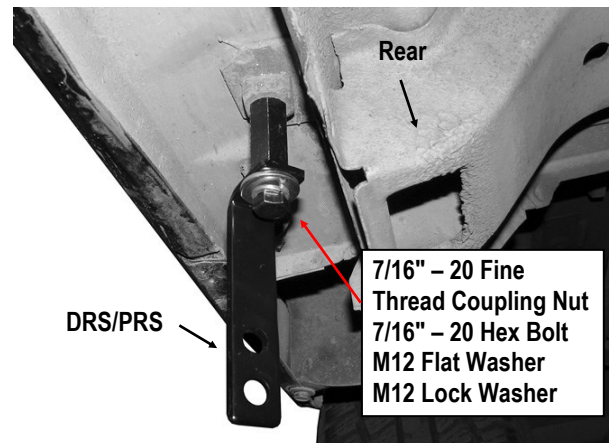


**(Fig 8) Thread The 7/16" – 20 Fine Thread Coupling Nut Onto Threaded End Of Seat Belt Bolt**

## STEP 7

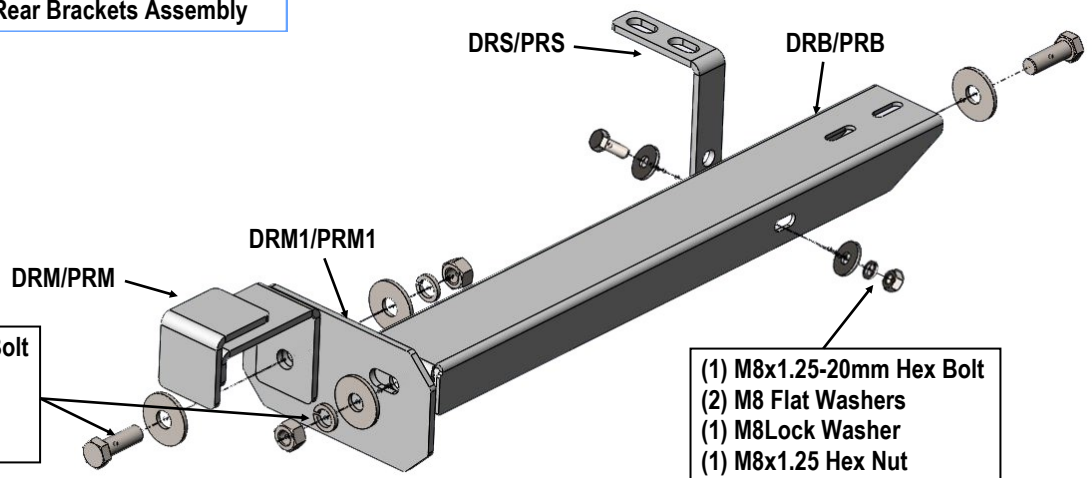
Once all (2) mounting brackets are installed, then proceed to the Step Bar installation. According to the style of Step Bar proceed to the correct installation STEPS.

**Note:** Aluminum Step Bar refer to STEP 8; Stainless Steel Step Bar skip to STEP 9.



**(Fig 9) Passenger Rear Support Bracket Installation**

**(Fig 10) Passenger Side Rear Brackets Assembly**



# iBoard®

## STEP 8

### Aluminum Step Bar Installation:

Select a **Aluminum Step Bar**. Slip (2) M6x1-20mm Square Head Bolts into each bottom channel (**Fig 11**). Carefully position the Step Bar onto the (2) Mounting Brackets.

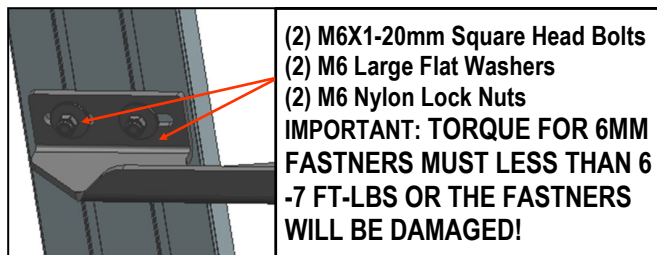
**IMPORTANT:** Do not slide the Step Bar on the Brackets or the bottom surface of the board will be damaged. Attach the Step Bar to each Mounting Brackets with (2) M6x1-20mm Square Head Bolts, (2) M6 Large Flat Washers and (2) M6 Nylon Lock Nuts, (**Fig 12**). Do not fully tighten at this time.

Level and adjust the Step Bar and fully tighten all hardware.

Repeat **Steps 1-8** for the other side Step Bar installation. **The installation is completed!!!**



(Fig 11) Slip M6X1-20mm Square Head Bolts Into The Bottom Channels



(Fig 12) Running Board Installed Onto Mounting Bracket

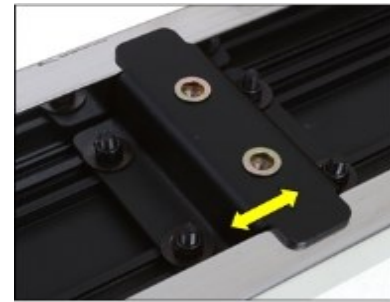
## STEP 9

### Stainless Steel Step Bar Installation:

Select a **Stainless Steel Step Bar** (with the U-Sliders installed on the Bar). Loose the U-Sliders, reposition the U-Sliders onto the board according to the (2) Installed Mounting Brackets location, (**Fig 13**). Re-secure the U-Sliders on the Step Bar. Attach the Step Bar to the installed Mounting Brackets with (4) M6X1-20mm Hex Bolts, (4) M6 Large Flat Washers & (4) M6 Lock Washers, (**Fig 14**). Do not fully tighten hardware at this time.

Level and adjust the Step Bar and fully tighten all hardware.

Repeat **Steps 1-7 and 9** for the other side Step Bar installation. **The installation is completed!!!**



(Fig 13) Slide & line up the U-Slider with the installed mounting brackets along bottom channel



(Fig 14) Step Bar Installed on Bracket Installed (Example)

### Attention

Do periodic inspections to the installation to make sure that all hardware is secure and tight. In order to protect your bars/boards, please use only mild soap/non-abrasive products for cleaning.