

iBoard®

iBoard® by APS

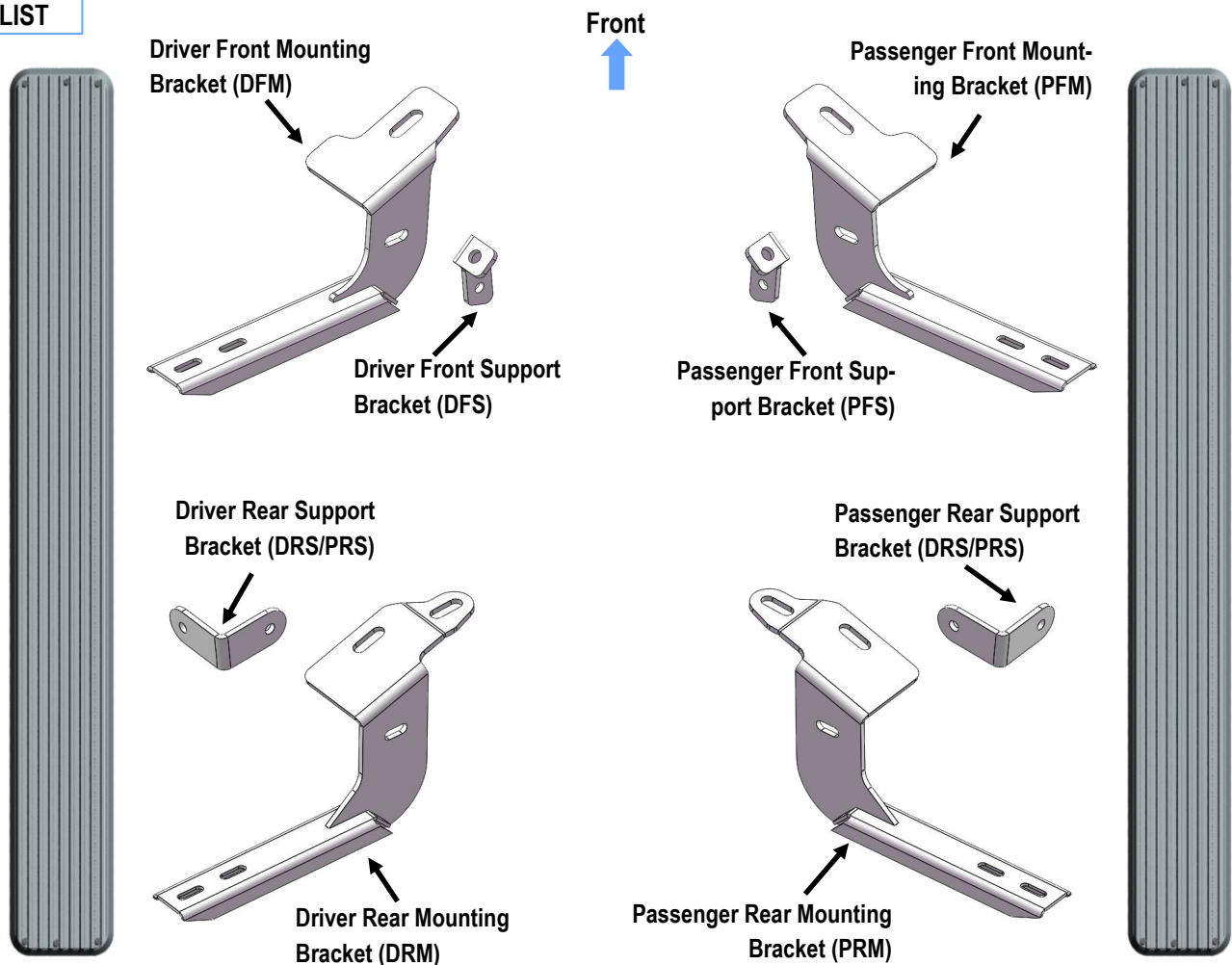
PART#: IB-152A-B

READ INSTRUCTIONS CAREFULLY BEFORE STARTING INSTALLATION. REMOVE CONTENTS FROM BOX AND VERIFY ALL PARTS ARE PRESENT. ASSISTANCE IS RECOMMENDED.

***ROCKER PANEL MOUNT
*DRILLING IS REQUIRED**

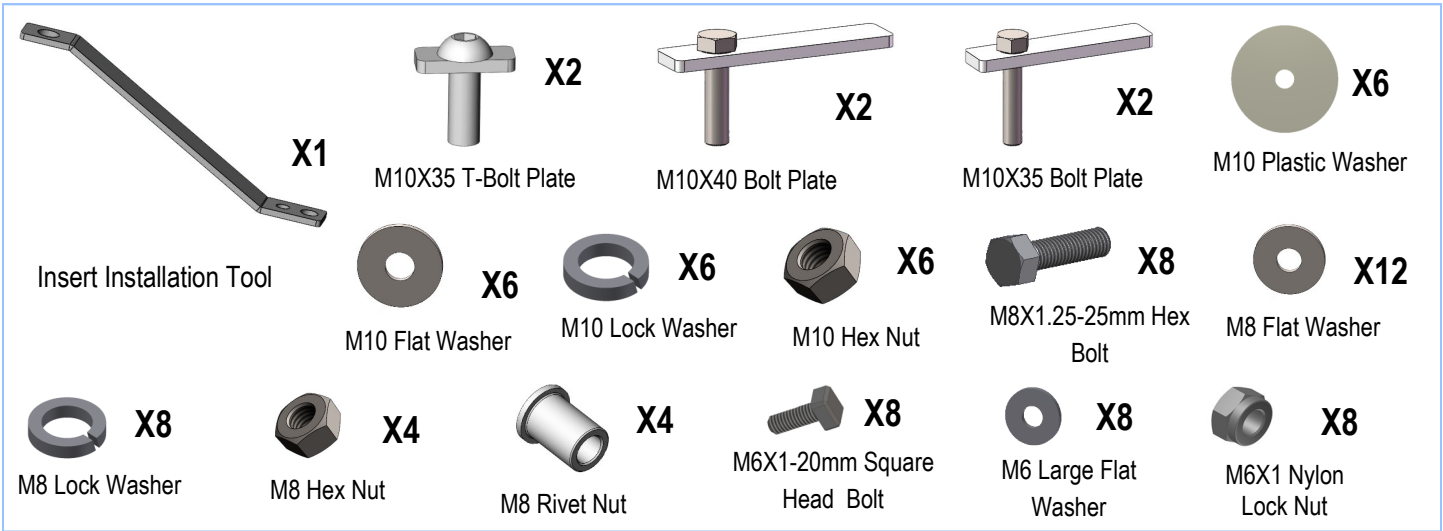
| Fastener Size | Tightening Torque (ft-lbs) |
|---------------|----------------------------|
| 6mm | 6-7 |
| 8mm | 16-18 |
| 10mm | 31-32 |
| 12mm | 56-58 |
| 14mm | 92-94 |

PART LIST



Customer Support: info@iboardauto.com

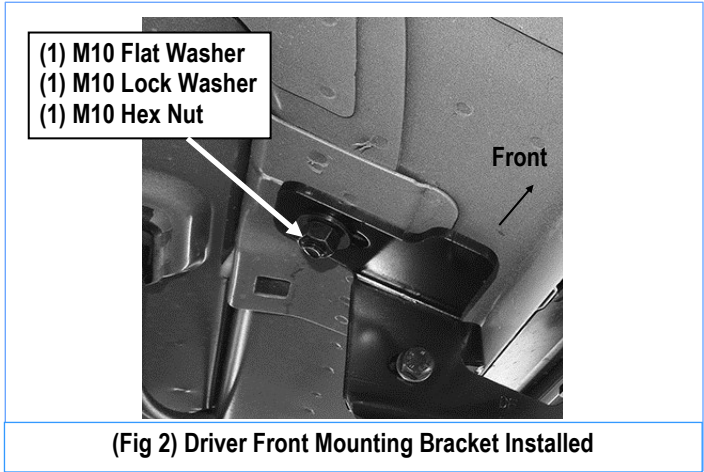
iBoard®



STEP 1

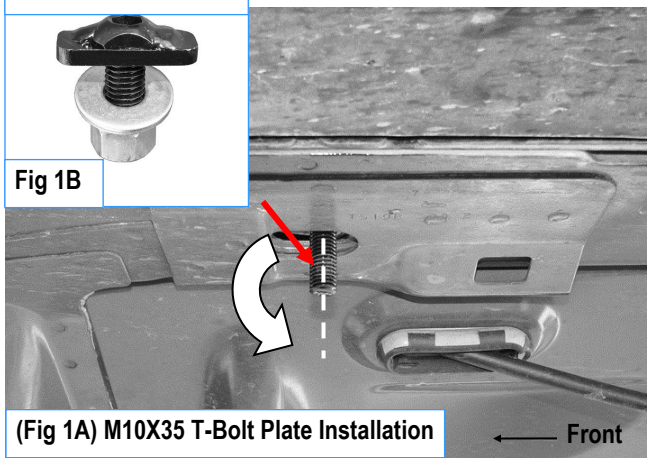
Start installation under the driver side front of the vehicle. Select and insert (1) M10 X 35 T-Bolt Plate into the factory oval hole in the floor panel, **(Fig 1A & 1B)**. Rotate the Bolt Plate 90-degrees so that the plate is across in the oval hole. Hang the Driver Front Mounting Bracket (**DFM**) to the installed M10X35 T-Bolt Plate with (1) M10 Flat Washer, (1) M10 Lock Washer and (1) M10 Hex Nut, **(Fig 2)**.

NOTE: Make sure that the mounting flange on the front Bracket is lined up properly with the indent in the floor panel. The front Mounting Bracket must sit flat against the floor panel. Do not fully tighten hardware at this time.



(Fig 2) Driver Front Mounting Bracket Installed

M10 X 35 T-Bolt Plate



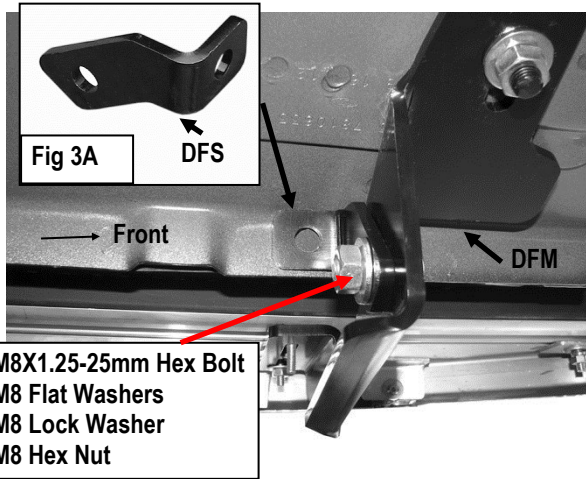
(Fig 1A) M10X35 T-Bolt Plate Installation

STEP 2

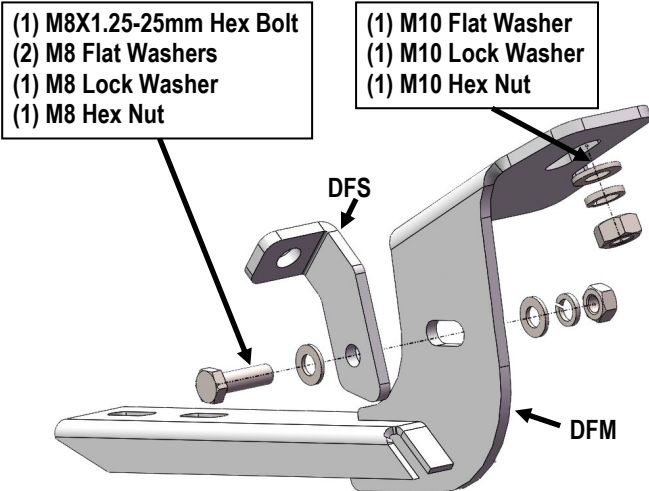
Select the Driver Front Support Bracket (**DFS**), **(Fig 3A)**. Bolt the Driver Front Support Bracket to the back of the Driver Front Mounting Bracket with (1) M8X1.25-25mm Hex Bolt, (2) M8 Flat Washers, (1) M8 Lock Washer and (1) M8 Hex Nut, **(Fig 3 & 4)**.

Note: Line up the mounting tab on the Support Bracket with the back of the pinch weld. Do not fully tighten hardware at this time.

iBoard®



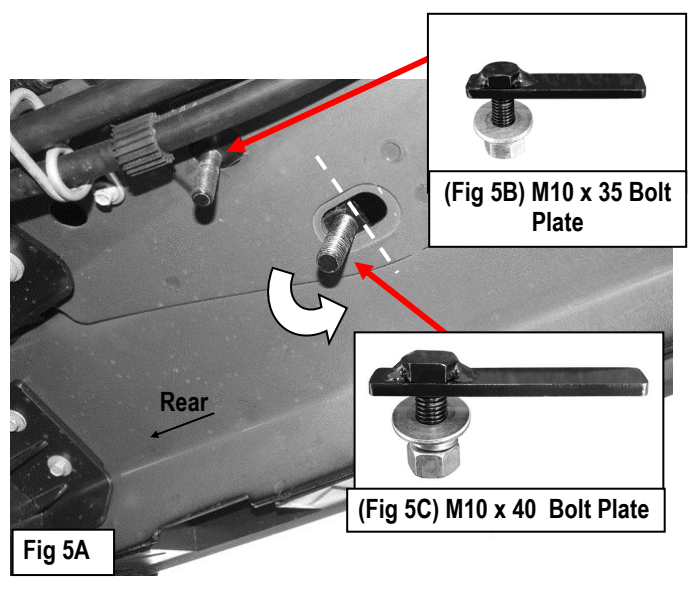
(Fig 3) Attach Driver Front Support Bracket to DFM Bracket



(Fig 4) Driver Side Front Brackets Installation

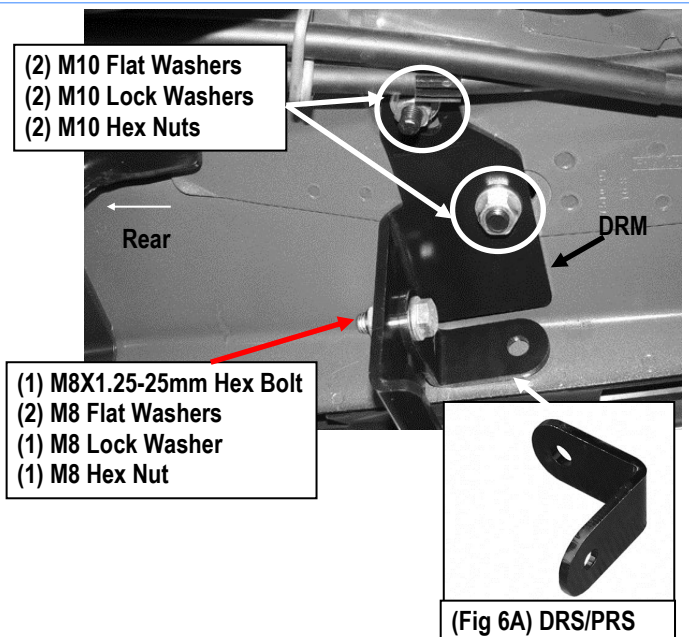
STEP 3

Move to the Driver Side Rear Mounting Location. Locate the oval and round holes on the floor panel on the driver side rear mounting location of the vehicle, **(Fig 5A)**. Insert (1) M10X35 Bolt Plate into the round hole, **(Fig 5B)**. Insert (1) M10X40 Bolt Plate into the oval hole next to the pinch weld, **(Fig 5C)**. Rotate t90-degree for the M10X40 Bolt Plate till the plate across on the oval hole.



STEP 4

Attach the Driver Rear Mounting Bracket (**DRM**) to the (2) installed M10 Bolt Plates with (2) M10 Flat Washers, (2) M10 Lock Washers and (2) M10 Hex Nuts, **(Fig 6)**. Do not fully tighten hardware at this time.

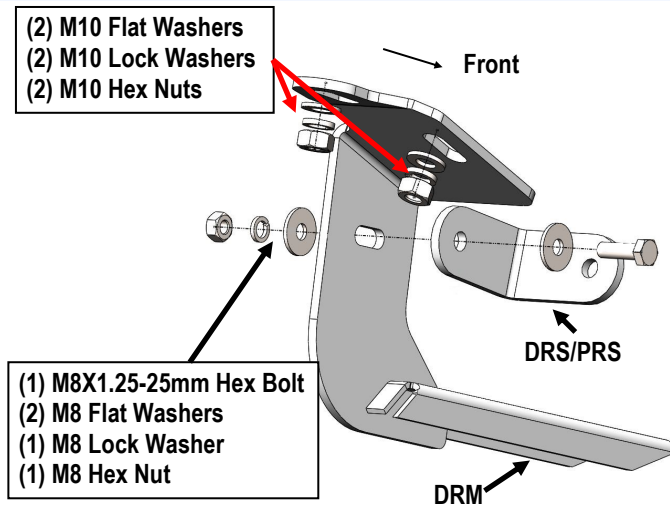


(Fig 6) Driver Rear Mounting Bracket (DRM) Installation

iBoard®

STEP 5

Next, select (1) Driver Rear Support Bracket (**DRS/PRS**), (**Fig 6A**). Bolt the Support Bracket to the front side of the Driver Rear Mounting Bracket (**DRM**) with (1) M8X1.25-25mm Hex Bolt, (2) M8 Flat Washers, (1) M8 Lock Washer and (1) M8 Hex Nut, (**Fig 6 & 7**). Do not fully tighten hardware at this time.



(Fig 7) Driver Side Rear Brackets Installation

STEP 6

Select a Running Board. Slip (2) M6x1-20mm Square Head Bolts into each bottom channel (**Fig 8**). Carefully position the Running Board onto the (2) Mounting Brackets.

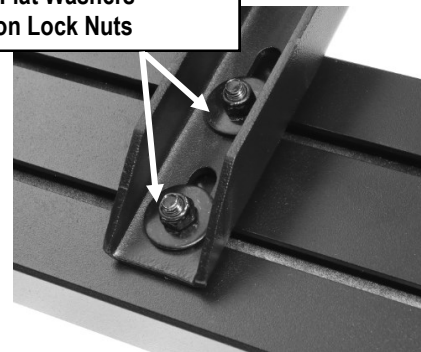
IMPORTANT: Do not slide the Running Board on the Brackets or the bottom surface of the board will be damaged. Attach the Running Board to Mounting Bracket with (2) M6x1-20mm Square Head Bolts, (2) M6 Large Flat Washers and (2) M6 X1 Nylon Lock Nuts (**Fig 9**). Do not fully tighten at this time. Level and adjust the Running Board and fully tighten all hardware.

NOTE: Level and adjust the Running Board and tighten the Mounting Brackets to Bolt Plate only. Do not tighten the hardware for the front and rear Support Bracket at this time.



(Fig 8) Slip M6X1-20mm Square Head Bolts Into The Bottom Channels

(2) M6X1-20mm Square Head Bolts
(2) M6 Large Flat Washers
(2) M6X1 Nylon Lock Nuts



(Fig 9) Running Board Installed Onto Mounting Bracket (Example)

STEP 7

Return to the Driver Front Mounting Bracket (**DFM**) and Driver Front Support Bracket (**DFS**). Hold the Front Support Bracket firmly against the inner of the pinch weld. Mark the mounting hole location onto the back side of the pinch weld, (**Fig 10**).

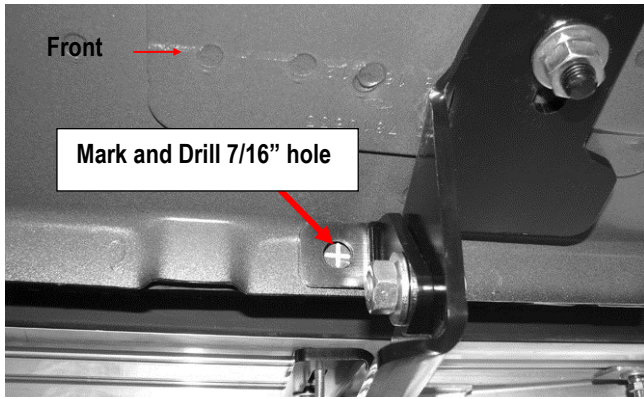
Make sure the Running Board is level, and then drill a 7/16" hole on the pinch weld according to the mark.

CAUTION: Do not drill the hole too close to the bottom edge of the pinch weld.

VERY IMPORTANT! Be very careful and drill slowly through the pinch weld to avoid damaging the outer rocker panel cover.

NOTE: Any cutting or drilling tool may break or shatter. Government regulations require safety glasses & equipment at all times when cutting or drilling.

iBoard®



(Fig 10) Mark and Drill 7/16" Hole on pinch weld according to the Support Bracket location

STEP 8

Select (1) Insert Installation Tool, (1) M8 Rivet Nut, (1) M8X1.25-25mm Hex Bolt and (1) M8 Flat Washer. Assemble the Insert Installation Tool as pictured in Fig 12. **NOTE: Select 8 mm hole on threaded tool (Fig 11).**

Hold the handle and push the M8 Rivet Nut into the drilled hole in the pinch weld. **NOTE:** Insert must fit snug in hole. If necessary, use a small hammer to carefully tap the Insert into the hole until the rim on the insert is flush against the pinch weld. Firmly hold the tool handle and tighten the Hex Bolt in the Tool to expand the M8 Rivet Nut in the hole. Continue until threads are pulled up close to the top of the Insert, (Figs 12A & 15). Remove the Tool and hardware. Bolt the Support Bracket to the M8 Rivet Nut with (1) M8x1-25mm Hex Bolt, (1) M8 Lock Washer and (1) M8 Flat Washer, (Fig 13). Do not fully tighten at this time.

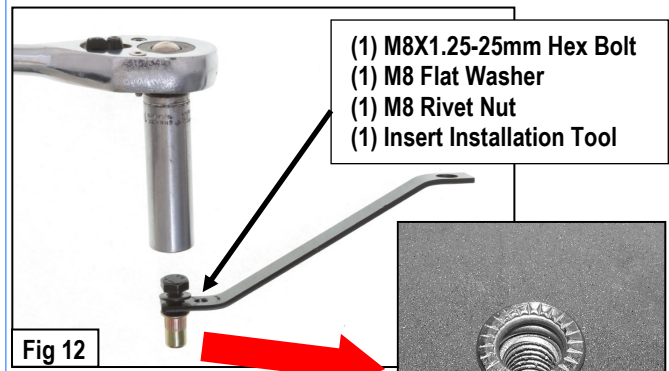
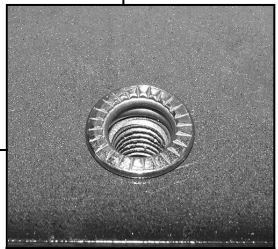


Fig 12



(Fig 12A) Properly installed Insert

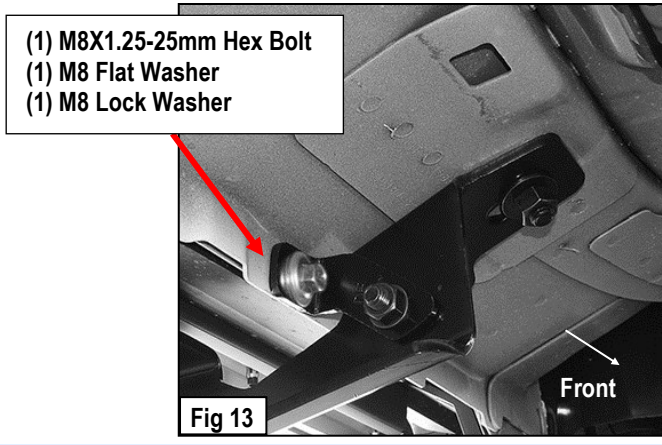
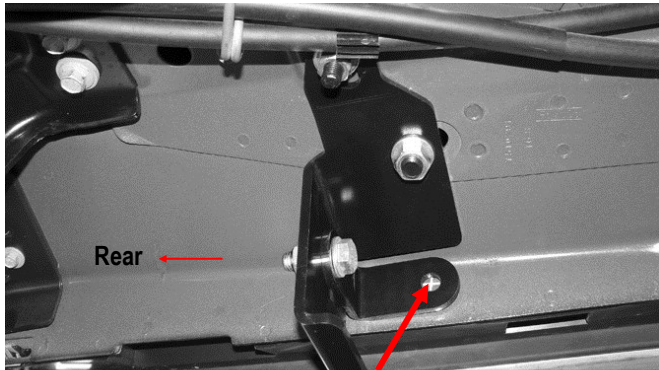


Fig 13

STEP 9

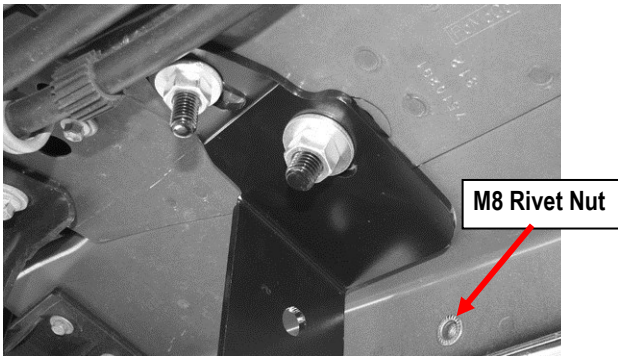
Move to the driver side rear Mounting Bracket. Hold the Driver Rear Support Bracket (DRS/PRS) firmly against the back of the pinch weld. Repeat Steps 7—8 to mark and drill the pinch weld and install the M8 Rivet Nut, (Fig 14 & 15). Reinstall the Support Bracket. Bolt the Support Bracket to the Insert with (1) M8x1-25mm Hex Bolt, (1) M8 Lock Washer and (1) M8 Flat Washer, (Fig 16). Tighten the front and rear Bracket hardware only at this time.

iBoard®

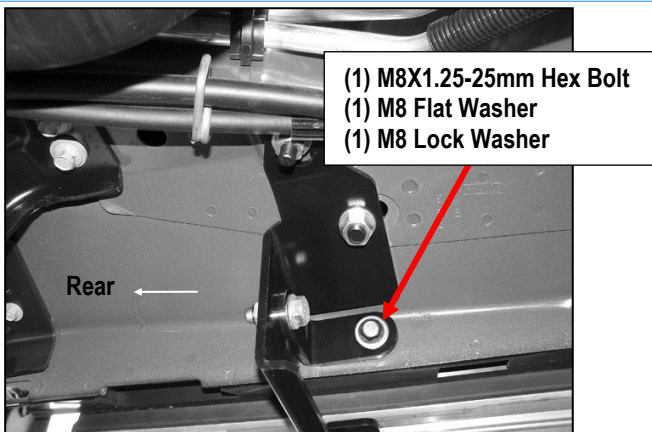


Mark and drill a 7/16" hole on pinch weld according to the location of Support Bracket

(Fig 14) Mark & Drill hole on the pinch weld according to the Driver Rear Support Bracket Location



(Fig 15) M8 Rivet Nut Installed on Pinch Weld (Driver Rear Support Bracket Location)



(Fig 16) Driver Rear Support Bracket Installed

STEP 10

Level and adjust the Running Board again, fully tighten all hardware as necessary.

STEP 11

Repeat **Steps 1-10** for the other side Running Board installation. The installation is completed (Fig 17).



(Fig 17) Installation Completed

Attention

Do periodic inspections to the installation to make sure that all hardware is secure and tight.

In order to protect your bars/boards, please use only mild soap/non-abrasive products for cleaning.