

# iBoard®

## iBoard® by APS

PART#: IB-005A-B

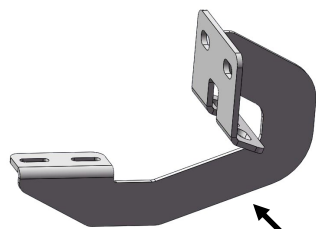
**READ INSTRUCTIONS CAREFULLY BEFORE STARTING INSTALLATION. REMOVE CONTENTS FROM BOX AND VERIFY ALL PARTS ARE PRESENT. ASSISTANCE IS RECOMMENDED.**

**\*ROCKER PANEL MOUNT  
\*NO DRILLING REQUIRED**

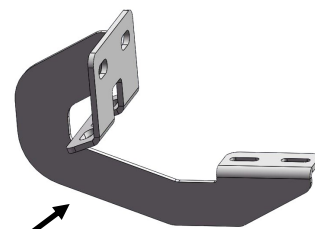
Fastener Size	Tightening Torque (ft-lbs)
6mm	6-7
8mm	16-18
10mm	31-32
12mm	56-58
14mm	92-94

### PART LIST

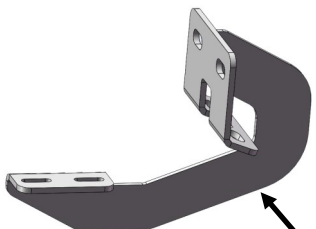
Front  
↑



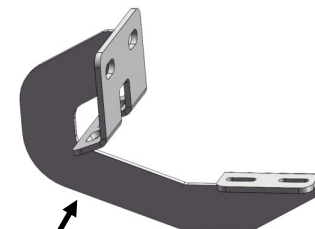
Driver Front Mounting  
Bracket (DFM/PRM)



Passenger Front Mounting  
Bracket (PFM/DRM)



Driver Rear Mounting  
Bracket (PFM/DRM)

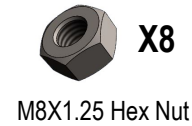
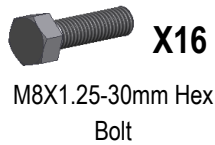


Passenger Rear Mounting  
Bracket (DFM/PRM)



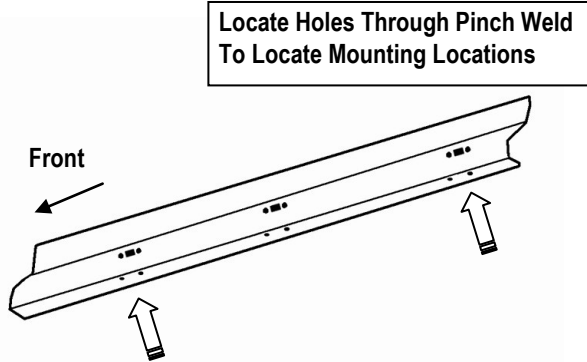
Customer Support: [info@iboardauto.com](mailto:info@iboardauto.com)

# iBoard®



## STEP 1

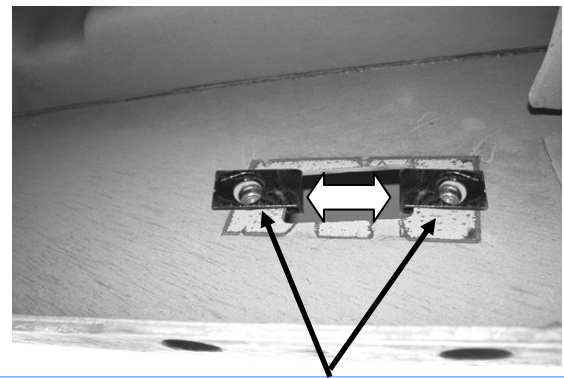
Starting installation on the passenger side of the vehicle, locate the (2) holes in the bottom of the body panel, (pinch weld), Next, locate the rectangular opening with (2) small holes on side along the inner of body panel above the holes in the pinch weld, (**Fig 1 & 2**). **NOTE:** The holes on the inner of body panel may be covered with sealing tape or insulation.



(Fig 1) Passenger Side Mounting Locations Illustrated

## STEP 2

Start installation from the Passenger Side Front Mounting Location. Slide (2) M8 Clip Nuts into the rectangular opening with the nut towards the inside. Line up the threaded nut on the clip nut with the round hole, (**Fig 2**).

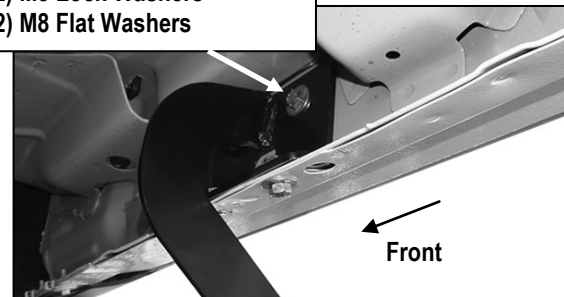


(Fig 2) M8 Clip Nuts Installed

## STEP 3

Select (1) Passenger Front Mounting Bracket (**PFM/DRM**), attach the Mounting Bracket to the installed (2) M8 Clip Nuts with the included (2) M8 x 1.25-30mm Hex Bolts, (2) M8 Lock Washers and (2) M8 Flat Washers, (**Figs 3 & 4**). Do not fully tighten hardware at this time.

(2) M8 x 1.25-30mm Hex Bolts  
(2) M8 Lock Washers  
(2) M8 Flat Washers

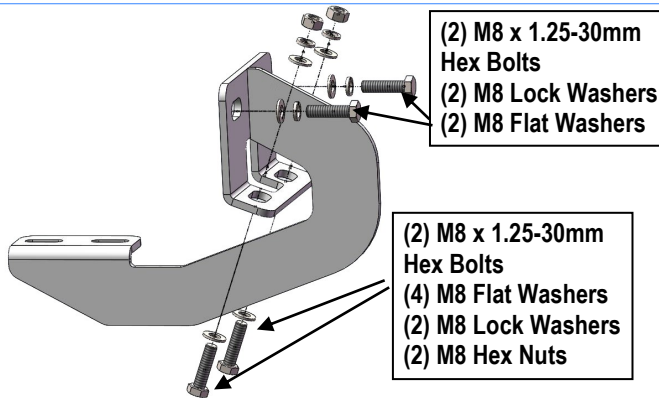


(Fig 3) Passenger Front Mounting Bracket Installed

# iBoard®

## STEP 4

Align the lower mounting holes in the bracket with the (2) holes in the pinch weld. Bolt the Bracket to the pinch weld using the included (2) M8x1.25-30mm Hex Bolts, (4) M8 Flat Washers, (2) M8 Lock Washers and (2) M8 Hex Nuts, **(Fig 4)**. **NOTE:** Insert the bolts up from the bottom of the pinch weld and through the Bracket. Do not fully tighten hardware at this time.



(Fig 4) Passenger Front Mounting Bracket Installation

## STEP 5

Move to the Passenger Side Rear Mounting Location, **(Fig 1)**. Repeat **Steps 2—5** for Passenger Rear Mounting Bracket **(DFM/PRM)** installation.

## STEP 6

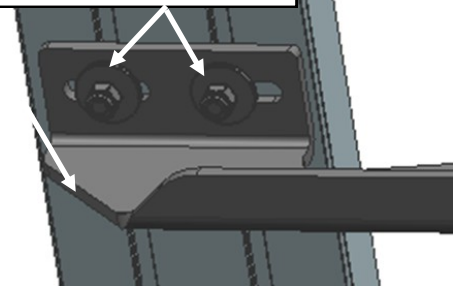
Select a Running Board. Slip (2) M6x1-20mm Square Head Bolts into each bottom channel **(Fig 5)**. Carefully position the Running Board onto the (2) Mounting Brackets.

**IMPORTANT:** Do not slide the Running Board on the Brackets or the bottom surface of the board will be damaged. Attach the Running Board to Mounting Bracket with (4) M6x1-20mm Square Head Bolts, (4) M6 Large Flat Washers and (4) M6 X1 Nylon Lock Nuts **(Fig 6)**. Do not fully tighten hardware at this time.



(Fig 5) Slip M6X1-20mm Square Head Bolts Into The Bottom Channels

(2) M6X1-20mm Square Head Bolts  
(2) M6 Large Flat Washers  
(2) M6X1 Nylon Lock Nuts



(Fig 6) Running Board Installed Onto Mounting Bracket

## STEP 7

Level and adjust the Running Board and fully tighten all hardware.

# iBoard®

## STEP 8

Repeat **Steps 1-7** for the other side Running Board installation. The installation is completed (**Fig 7**).



(Fig 7) Installation Completed

### Attention

Do periodic inspections to the installation to make sure that all hardware is secure and tight.

In order to protect your bars/boards, please use only mild soap/non-abrasive products for cleaning.