

iBoard®

iBoard® by APS

PART#: IB-028

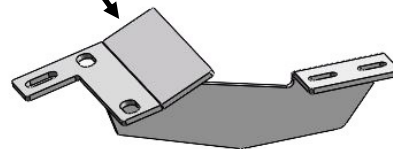
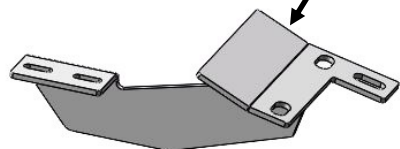
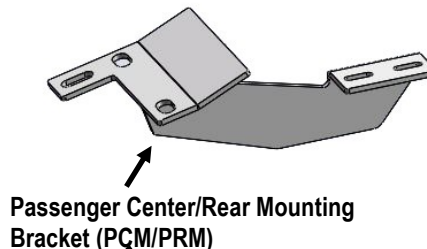
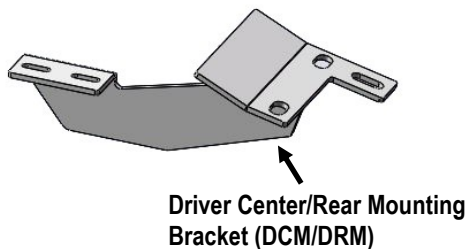
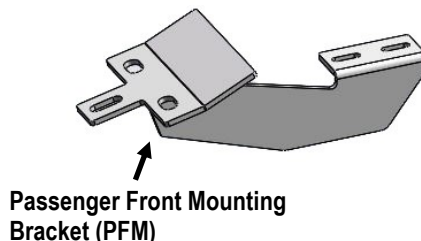
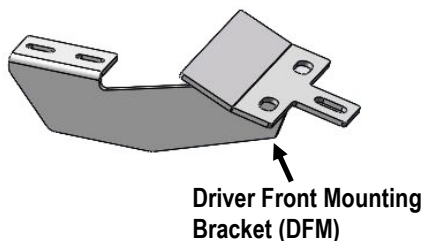
READ INSTRUCTIONS CAREFULLY BEFORE STARTING INSTALLATION. REMOVE CONTENTS FROM BOX AND VERIFY ALL PARTS ARE PRESENT. ASSISTANCE IS RECOMMENDED.

*BODY FRAME MOUNT
*NO DRILLING REQUIRED

Fastener Size	Tightening Torque (ft-lbs)	Required
6mm	6-7	√
8mm	16-18	X
10mm	31-32	√
12mm	56-58	X
14mm	92-94	X

PART LIST

Front
↑



Note: *Driver Center / Rear Mounting Bracket are universal
*Passenger Center / Rear Mounting Bracket are universal

Customer Support: info@iboardauto.com

iBoard®

Hardware Package A (For Bracket Installation)



X4

83mm Tube Spacer



X2

65mm Tube Spacer



X4

M10X1.5-120mm Hex Bolt



X2

M10X1.5-100mm Hex Bolt



X12

M10X1.5-30mm Hex Bolt



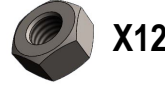
X30

M10 Flat Washer



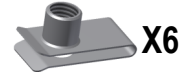
X18

M10 Lock Washer



X12

M10 Hex Nut



X6

M10 Clip Nut

Hardware Package B (For Aluminum Step Bar Installation Only, Not Supply to Stainless Steel Step Bar)



X12

M6X1-20mm Square Head Bolt



X12

M6 Large Flat Washer



X12

M6 Nylon Lock Nut

Hardware Package C (For Stainless Steel Step Bar Installation Only, Not Supply to Aluminum Step Bar)



X12

M6X1-20mm Hex Bolt



X12

M6 Lock Washer

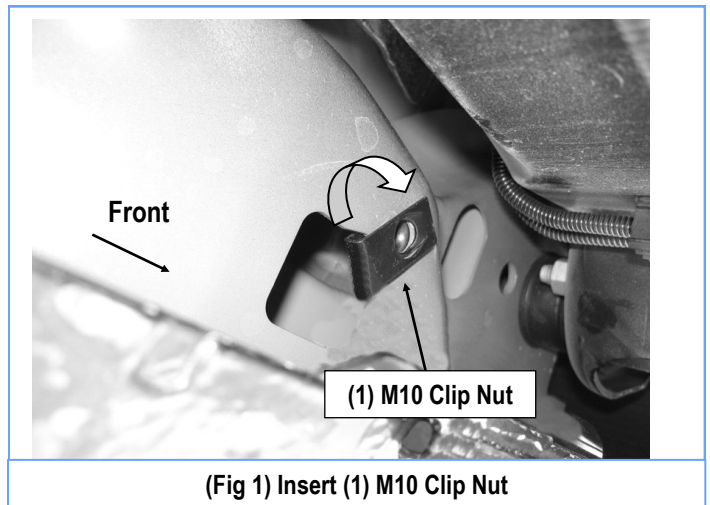


X12

M6 Flat Washer

STEP 1

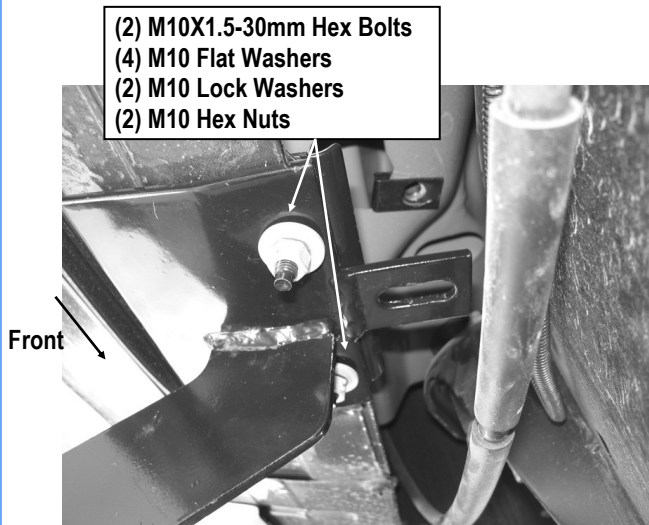
Start installation from the driver side front of the vehicle. From underside of vehicle, locate the (2) front factory holes on the driver side floor panel located by the front tire. With the threaded nut facing up, insert (1) M10 Clip Nut through larger hole. Orient M10 Clip Nut to engage in the smaller hole, (Fig 1).



iBoard®

STEP 2

Select the Driver Front Mounting Bracket (**DFM**). Attach the Front Mounting Bracket to pinch weld with (2) M10X1.5-30mm Hex Bolts, (4) M10 Flat Washers, (2) M10 Lock Washers and (2) M10 Hex Nuts, (**Figs 2 & 4**). Do not fully tighten hardware at this time.

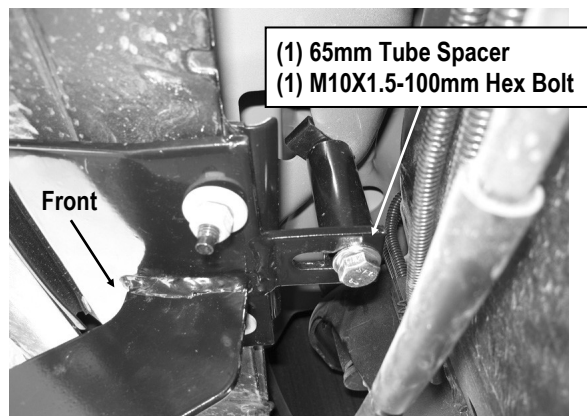


(Fig 2) Driver Front Mounting Bracket Installation

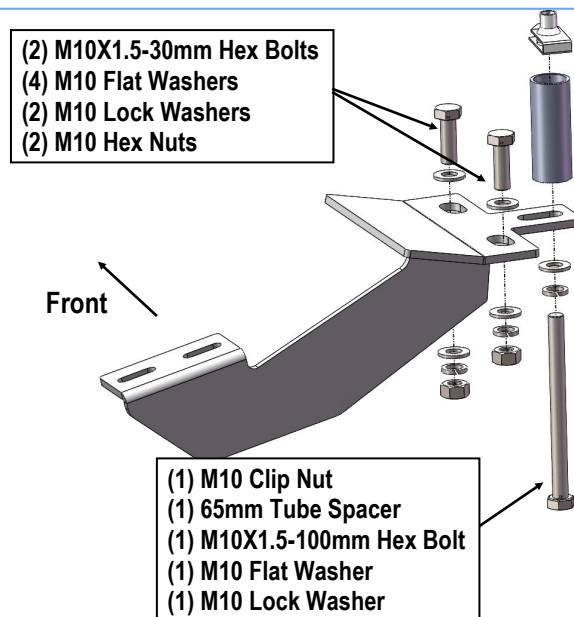
STEP 3

Place (1) short 65mm Tube Spacer between the tab on the Driver Front Mounting Bracket and the installed M10 Clip Nut.

Attach the Driver Front Mounting Bracket to the installed Clip Nut with (1) M10X1.5-100mm Hex Bolt, (1) M10 Flat Washer and (1) M10 Lock Washers, (**Figs 3 & 4**). Do not fully tighten at this time.



(Fig 3) Driver Front Mounting Bracket Installation



(Fig 4) Driver Front Mounting Bracket Installation

STEP 4

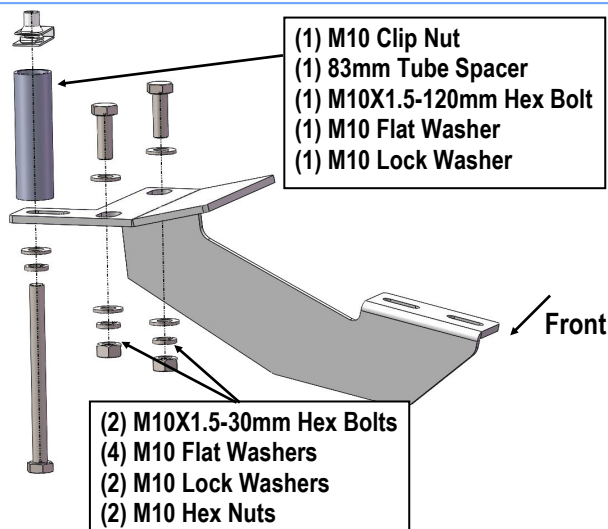
Move to the driver side center mounting location. Repeat **Steps 2 – 3** for Driver Center Mounting Bracket. Depending upon your vehicle, the center factory hole might be too small for the M10 Clip Nut, file the Clip Nut until you are able to mount it, (**Fig 5**).

NOTE: You will be using (1) 83mm Tube Spacer with (1) M10X1.5-120mm Hex Bolt on the Driver Center and Rear Mounting Brackets, (**Fig 6**). Do not fully tighten at this time.

iBoard®



(Fig 5) File The Clip Nut



(Fig 6) Driver Center Mounting Bracket (DCM) Installation

STEP 5

Move to the driver side rear mounting location. Repeat **Step 4** for Driver Rear Mounting Brackets.

IMPORTANT! Install the rear Mounting Brackets depending upon your vehicle.

07-08 Explorer Sport Trac:

You will need to swap the Rear Mounting Brackets. The **Passenger Rear Mounting Bracket** will mount on the **driver side rear location**, and the **Driver Rear Mounting Bracket** will mount on the **passenger side rear location**.

STEP 6

Once all (3) mounting brackets are installed, then proceed to the Step Bar installation. According to the style of Step Bar proceed to the correct installation STEPS.

Note: Aluminum Step Bar refer to **STEP 7**; Stainless Steel Step Bar skip to **STEP 8**.

STEP 7

Aluminum Step Bar Installation:

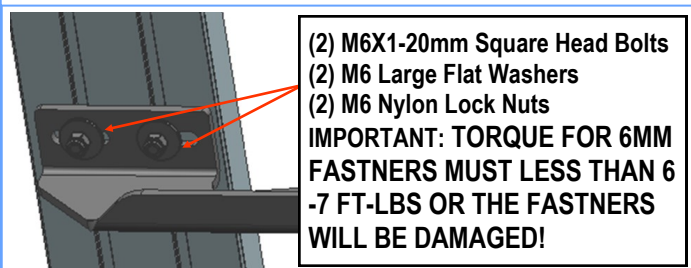
Select a **Aluminum Step Bar**. Slip (3) M6x1-20mm Square Head Bolts into each bottom channel (**Fig 7**). Carefully position the Step Bar onto the (3) Mounting Brackets.

IMPORTANT: Do not slide the Step Bar on the Brackets or the bottom surface of the board will be damaged. Attach the Step Bar to each Mounting Brackets with (2) M6x1-20mm Square Head Bolts, (2) M6 Large Flat Washers and (2) M6 Nylon Lock Nuts, (**Fig 8**). Do not fully tighten at this time.

Level and adjust the Step Bar and fully tighten all hardware. Repeat **Steps 1-7** for the other side Step Bar installation. **The installation is completed!!!**



(Fig 7) Slip M6X1-20mm Square Head Bolts Into The Bottom Channels



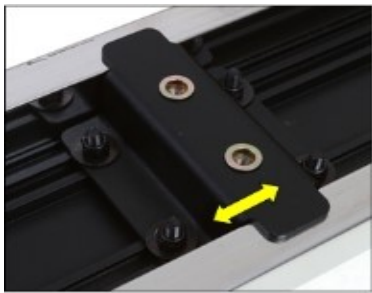
(Fig 8) Running Board Installed Onto Mounting Bracket

iBoard®

STEP 8

Stainless Steel Step Bar Installation:

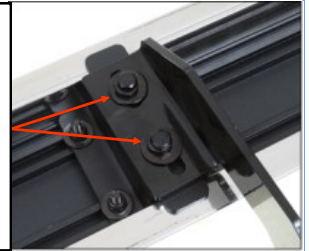
Select a **Stainless Steel Step Bar** (with the U-Sliders installed on the Bar). Loosen the U-Sliders, reposition the U-Sliders onto the board according to the (3) Installed Mounting Brackets location, **(Fig 9)**. Re-secure the U-Sliders on the Step Bar. Attach the Step Bar to the installed Mounting Brackets with (6) M6X1-20mm Hex Bolts, (6) M6 Large Flat Washers & (6) M6 Lock Washers, **(Fig 10)**. Do not fully tighten hardware at this time. Level and adjust the Step Bar and fully tighten all hardware. Repeat **Steps 1-6 and 8** for the other side Step Bar installation. **The installation is completed!!!**



(Fig 9) Slide & line up the U-Slider with the installed mounting brackets along bottom channel

- (2) M6X1-20mm Hex Bolts
- (2) M6 Large Flat Washers
- (2) M6 Lock Washers

IMPORTANT: TORQUE FOR 6MM FASTNERS MUST LESS THAN 6-7 FT-LBS OR THE FASTNERS WILL BE DAMAGED!



(Fig 10) Step Bar Installed On Bracket Installed

Attention

Do periodic inspections to the installation to make sure that all hardware is secure and tight.

In order to protect your bars/boards, please use only mild soap/non-abrasive products for cleaning.