

iBoard®

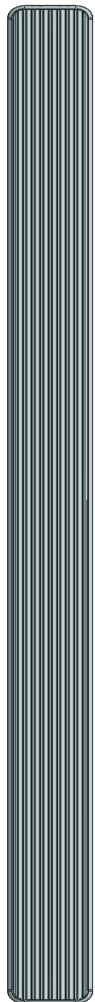
iBoard® by APS

PART#: IB-234

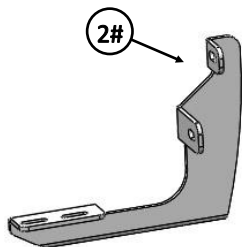
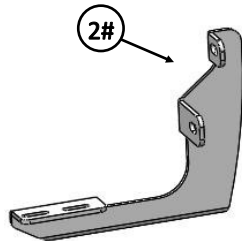
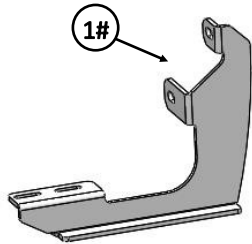
READ INSTRUCTIONS CAREFULLY BEFORE STARTING INSTALLATION. REMOVE CONTENTS FROM BOX AND VERIFY ALL PARTS ARE PRESENT. ASSISTANCE IS RECOMMENDED.

*ROCKER PANEL MOUNT
*NO DRILLING REQUIRED

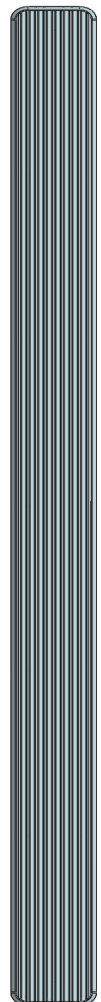
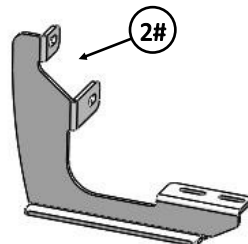
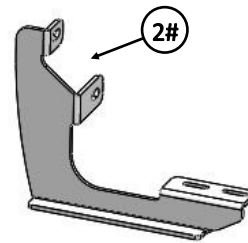
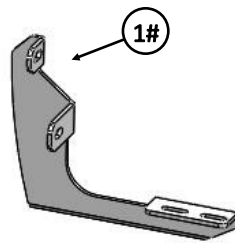
| Fastener Size | Tightening Torque (ft-lbs) | Required |
|---------------|----------------------------|----------|
| 6mm | 6-7 | √ |
| 8mm | 16-18 | √ |
| 10mm | 31-32 | X |
| 12mm | 56-58 | X |
| 14mm | 92-94 | X |



Driver Side Step Bar



Front
↑





Passenger Side Step Bar


iBoard®

| Mounting Bracket List | | | | | |
|-----------------------|-----|--|------|-----|-------------------|
| Item | QTY | Description | Item | QTY | Description |
| 1# | 2 | Driver & Passenger Front Mounting Brackets | 2# | 4 | Mounting Brackets |

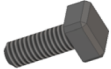
| Hardware Package A (For Bracket Installation) | | | | | |
|---|-----|--------------------|------|-----|--------------------|
| Item | QTY | Description | Item | QTY | Description |
| 1# | 12 | M8 Plastic Washers | 3# | 12 | M8 Nylon Lock Nuts |
| 2# | 12 | M8 Flat Washers | | | |


 1#


 2#

 3#


| Hardware Package B (For Aluminum Step Bar Installation Only, Not Supply to SS. Step Bar) | | | | | |
|--|-----|-----------------------------|------|-----|----------------------|
| Item | QTY | Description | Item | QTY | Description |
| 1# | 12 | M6X1-20mm Square Head Bolts | 3# | 12 | M6X1 Nylon Lock Nuts |
| 2# | 12 | M6 Large Flat Washers | | | |


 1 #


 2 #

 3#

| Hardware Package C (For Stainless Steel Step Bar Installation Only, Not Supply to Aluminum Step Bar) | | | | | |
|--|-----|---------------------|------|-----|-----------------|
| Item | QTY | Description | Item | QTY | Description |
| 1# | 12 | M6X1-20mm Hex Bolts | 3# | 12 | M6 Flat Washers |
| 2# | 12 | M6 Lock Washers | | | |

 1 #

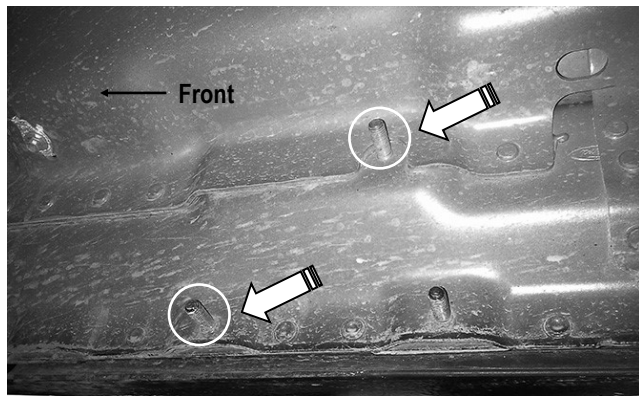
 2 #

 3 #

iBoard®

STEP 1

Start installation from the passenger side front of the vehicle. Locate the rear factory running board mounting location along the inner side of the body, (Fig 1).



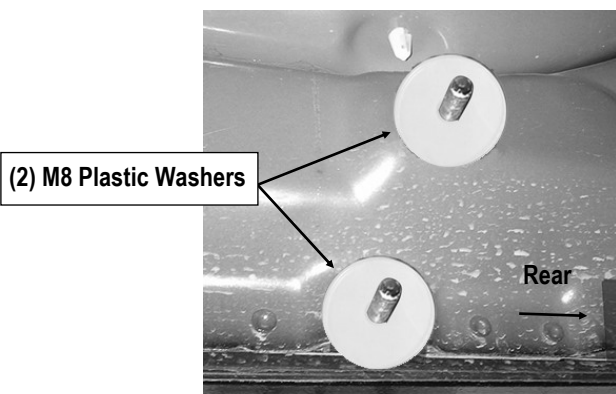
(Fig 1) Passenger Side Front Mounting Location

STEP 2

Slide (1) M8 Plastic Washer over each of the (2) factory mounting studs in the body panel, (Fig 2).

IMPORTANT: The M8 Plastic Washers are designed to prevent corrosion between the aluminum body panel and the steel Mounting Brackets.

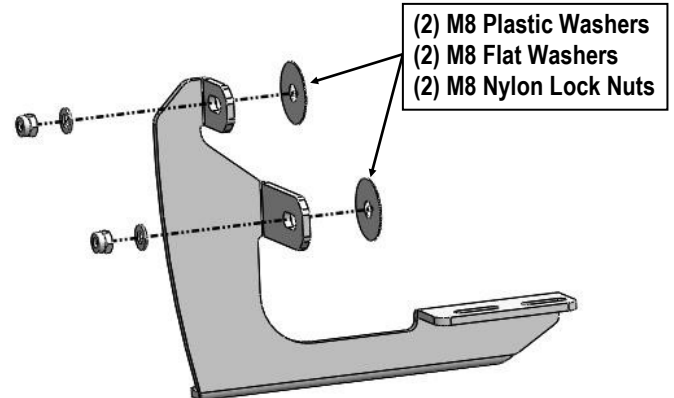
Note: Do not install the Brackets without the Plastic Washers.



(Fig 2) Thread M8 Plastic Washers Onto (2) Mounting Studs

STEP 3

Select (1) Passenger Front Mounting Bracket. Attach the Passenger Front Mounting Bracket to the (2) factory studs with (2) M8 Flat Washers and (2) M8 Nylon Lock Nuts, (Fig 3). Do not fully tighten hardware at this time.



(Fig 3) Passenger Front Mounting Bracket Installation

STEP 4

Move to the passenger side center & rear of the vehicle. Select (1) Mounting Bracket. **NOTE:** All (4) Mounting Brackets will fit left or right side. Repeat **Steps 1—3** to install the passenger side Center & Rear Mounting Brackets.

STEP 5

Once all (3) mounting brackets are installed, then proceed to the Step Bar installation. According to the style of Step Bar proceed to the correct installation STEPS.

Note: Aluminum Step Bar refer to **STEP 6**; Stainless Steel Step Bar skip to **STEP 7**.

iBoard®

STEP 6

Aluminum Step Bar Installation:

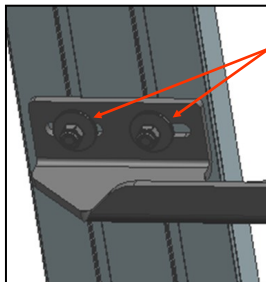
Select a **Aluminum Step Bar**. Slip (3) M6x1-20mm Square Head Bolts into each bottom channel (**Fig 4**). Carefully position the Step Bar onto the (3) Mounting Brackets.

IMPORTANT: Do not slide the Step Bar on the Brackets or the bottom surface of the board will be damaged. Attach the Step Bar to each Mounting Brackets with (2) M6x1-20mm Square Head Bolts, (2) M6 Large Flat Washers and (2) M6x1 Nylon Lock Nuts, (**Fig 5**). Do not fully tighten at this time.

Level and adjust the Step Bar and fully tighten all hardware. Repeat **Steps 1-6** for the other side Step Bar installation. **The installation is completed!!!**



(Fig 4) Slip M6X1-20mm Square Head Bolts Into The Bottom Channels



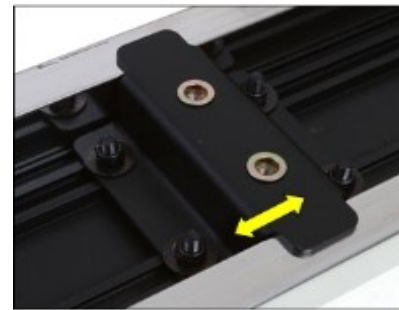
(2) M6X1-20mm Square Head Bolts
(2) M6X1 Large Flat Washers
(2) M6 Nylon Lock Nuts
IMPORTANT: TORQUE FOR 6MM FASTNERS MUST LESS THAN 6-7 FT-LBS OR THE FASTNERS WILL BE DAMAGED!

(Fig 5) Step Bar Installed Onto Mounting Bracket

STEP 7

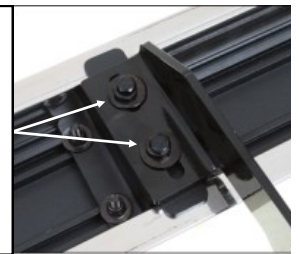
Stainless Steel Step Bar Installation:

Select a **Stainless Steel Step Bar** (with the U-Sliders installed on the Bar). Loose the U-Sliders, reposition the U-Sliders onto the board according to the (3) Installed Mounting Brackets location, (**Fig 6**). Re-secure the U-Sliders on the Step Bar. Attach the Step Bar to the installed Mounting Brackets with (6) M6X1-20mm Hex Bolts, (6) M6 Large Flat Washers & (6) M6 Lock Washers, (**Fig 7**). Do not fully tighten hardware at this time. Level and adjust the Step Bar and fully tighten all hardware. Repeat **Steps 1-5 and 7** for the other side Step Bar installation. **The installation is completed!!!**



(Fig 6) Slide & line up the U-Slider with the installed mounting brackets along bottom channel

(2) M6X1-20mm Hex Bolts
(2) M6 Large Flat Washers
(2) M6 Lock Washers
IMPORTANT: TORQUE FOR 6MM FASTNERS MUST LESS THAN 6-7 FT-LBS OR THE FASTNERS WILL BE DAMAGED!



(Fig 7) Step Bar Installed on Bracket Installed

Attention

Do periodic inspections to the installation to make sure that all hardware is secure and tight. In order to protect your bars/boards, please use only mild soap/non-abrasive products for cleaning.