

iBoard®

iBoard® by APS

PART#: IB-177A&B

READ INSTRUCTIONS CAREFULLY BEFORE STARTING INSTALLATION. REMOVE CONTENTS FROM BOX AND VERIFY ALL PARTS ARE PRESENT. ASSISTANCE IS RECOMMENDED.

*ROCKER PANEL MOUNT
*No DRILLING REQUIRED

Fastener Size	Tightening Torque (ft-lbs)
6mm	6-7
8mm	16-18
10mm	31-32
12mm	56-58
14mm	92-94

Item	QTY	Description	Item	QTY	Description
1#	4	Mounting Brackets	8#	12	M8 Lock Washers
2#	1	Driver Center Mounting Bracket	9#	6	M8 Hex Nuts
3#	1	Passenger Center Mounting Bracket	10#	6	M8 Clip Nuts
4#	6	M8X1.25 - 30mm Hex Bolts	11#	12	M6X1-20mm Square Head Bolts
5#	6	M8x1.25 - 25mm Hex Bolts	12#	12	M6 Large Flat Washers
6#	12	M8 Flat Washers	13#	12	M6X1 Nylon Lock Nuts
7#	6	M8 Large Flat Washers			



4 #



5 #



6 #



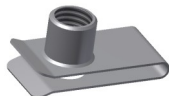
7 #



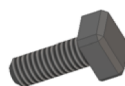
8 #



9 #



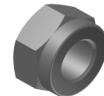
10 #



11 #



12 #

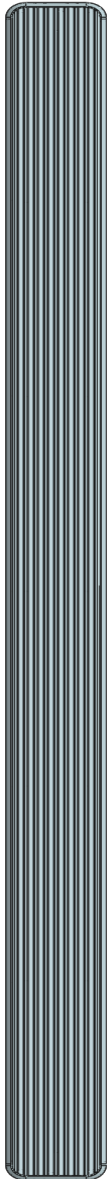


13 #

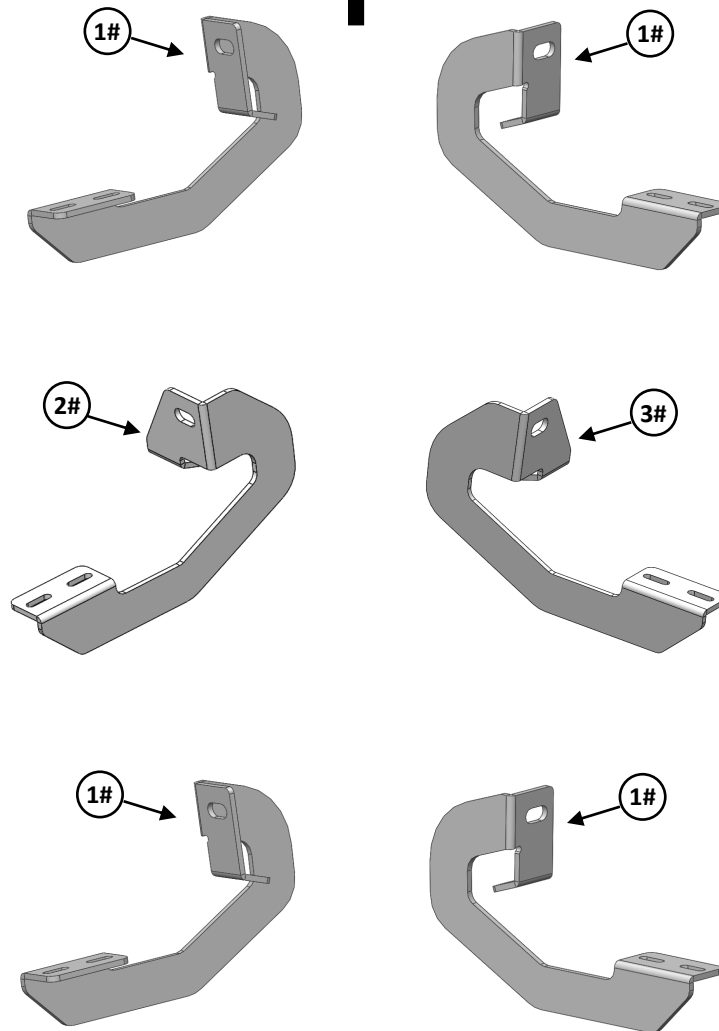
Customer Support: info@iboardauto.com

iBoard®

Driver



Front



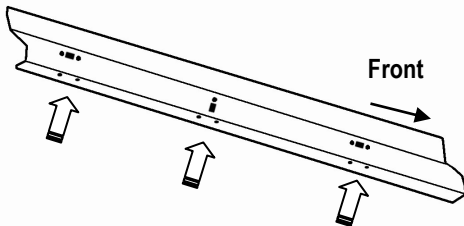
Passenger



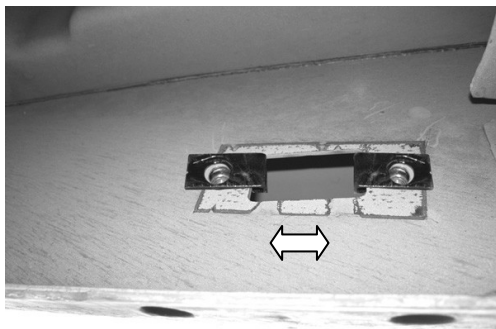
iBoard®

STEP 1

Starting on the driver side of the vehicle, locate the (2) holes in the bottom of the body panel, (pinch weld), toward the front tire, **(Fig 1)**. Next locate the rectangular opening and (2) small holes in the inner body panel directly above the holes in the pinch weld, **(Fig 1 & 2)**. **NOTE:** The holes in the inner panel may be covered with sealing tape or insulation.



**(Fig 1) Driver Inner Body Panel Illustrated
(Locate Holes Through Pinch Weld Arrows To
Determine Mounting Locations)**



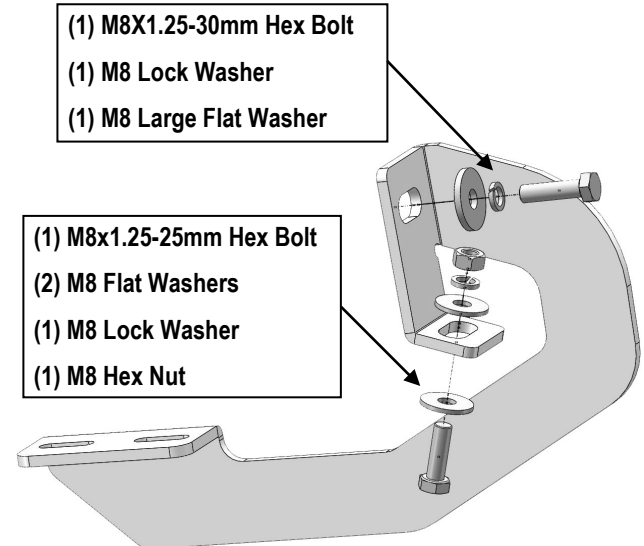
(Fig 2) Slide M8 Clip Nuts Over Holes

STEP 2

Slide (1) M8 Clip Nut into the rectangular opening with the nut towards the inside. Line up the threaded nut on the clip with the round hole, **(Fig 2)**. Repeat to install the 2nd M8 Clip Nut in remaining hole location.

STEP 3

Select (1) Driver Front Mounting Bracket. **NOTE: All (4) Front & Rear Mounting Brackets are universal and will fit driver or passenger side.** Attach the Bracket to the (1) M8 Clip Nuts with the included (1) M8X1.25-30mm Hex Bolt, (1) M8 Lock Washer and (1) M8 Large Flat Washer, **(Fig 3)**. Depending on model and year, the brake cable may be run on the inside or outside of the Bracket. Do not tighten hardware at this time. **NOTE:** The cradle on the front Bracket should face to the rear of the vehicle.



(Fig 3) Driver Front Mounting Bracket Installed

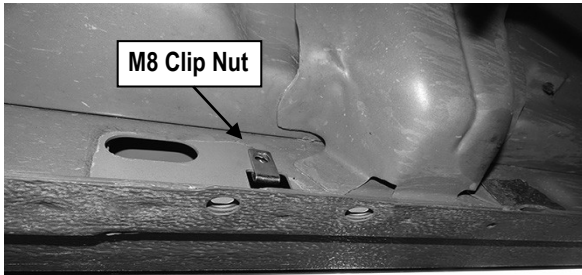
STEP 4

Align the bottom holes in the front Bracket with the (1) holes in the pinch weld. Bolt the Bracket to the pinch weld using the included (1) M8X1.25-25mm Hex Bolt, (2) M8 Flat Washers, (1) M8 Lock Washer and (1) M8 Hex Nut, **(Fig 3)**. **NOTE:** Insert the bolts up from the bottom of the pinch weld and through the Bracket.

iBoard®

STEP 5

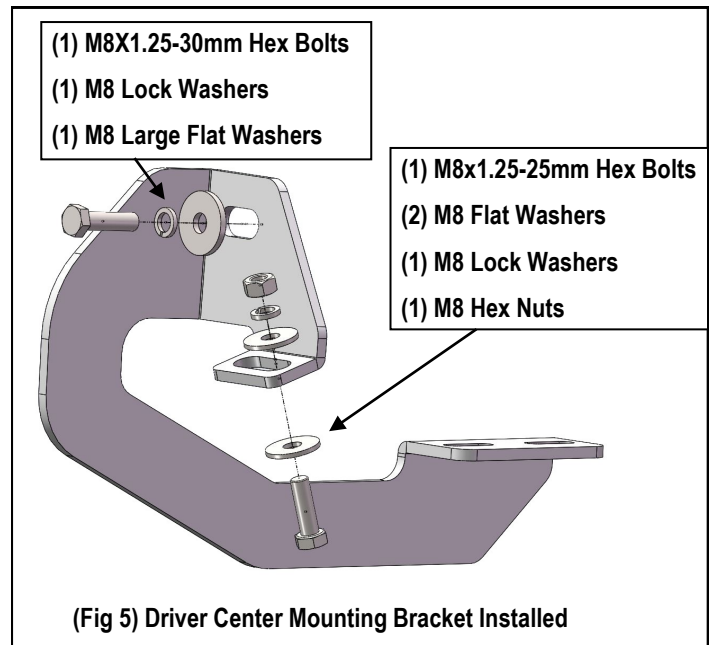
Next, move toward the center of the vehicle. Locate the (2) holes in the pinch weld similar to the front location, Insert (1) M8 Clip Nut into the rectangular opening and up to the single small round hole in the body panel, (**Fig 4**).



(Fig 4) Driver Center Mounting Bracket Location Pictured

STEP 6

Select Driver Center Mounting Bracket. Attach the Bracket to the M8 Clip Nut with (1) M8X1.25-30mm Hex Bolt, (1) M8 Lock Washer and (1) M8 Large Flat Washer, (**Fig 5**). Line up the hole in the Bracket with the hole in the pinch weld. Bolt the Bracket to the pinch weld with (1) M8x1.25-25mm Hex Bolt, (2) M8 Flat Washers, (1) M8 Lock Washer and (1) M8 Hex Nut. Do not tighten hardware at this time. **NOTE:** The cradle on the center mounting Bracket will face the front of the vehicle.



(Fig 5) Driver Center Mounting Bracket Installed

STEP 7

Continue along the cab to the rear mounting location. Repeat **Steps 1—4** for Driver Rear Mounting Bracket installation. **NOTE:** The cradle on the rear Bracket should face the front of the vehicle.

STEP 8

Select a Running Board. Slip (3) M6x1-20mm Square Head Bolts into each bottom channel (**Fig 6**). Carefully position the Running Board onto the (3) Mounting Brackets.

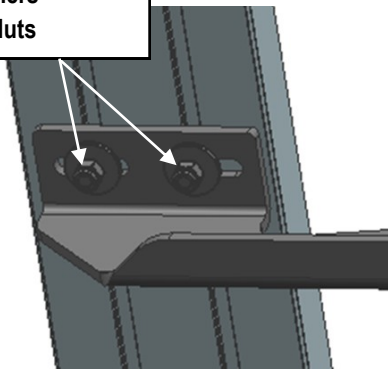
IMPORTANT: Do not slide the Running Board on the Brackets or the bottom surface of the board will be damaged. Attach the Running Board to each Mounting Brackets with (2) M6x1-20mm Square Head Bolts, (2) M6 Large Flat Washers and (2) M6 X1 Nylon Lock Nuts (**Fig 7**). Do not fully tighten at this time.

iBoard®



(Fig 6) Slip M6X1-20mm Square Head Bolts Into The Bottom Channels

(2)M6X1-20mm Square Head Bolts
(2)M6 Large Flat Washers
(2)M6X1 Nylon Lock Nuts



(Fig 7) Running Board Installed Onto Mounting Bracket

STEP 9

Level and adjust the Running Board and fully tighten all hardware.

STEP 10

Repeat **Steps 1-9** for the other side Running Board installation. The installation is completed (**Fig 9**).



(Fig 9) Installation Completed

Attention

Do periodic inspections to the installation to make sure that all hardware is secure and tight.

In order to protect your bars/boards, please use only mild soap/non-abrasive products for cleaning.