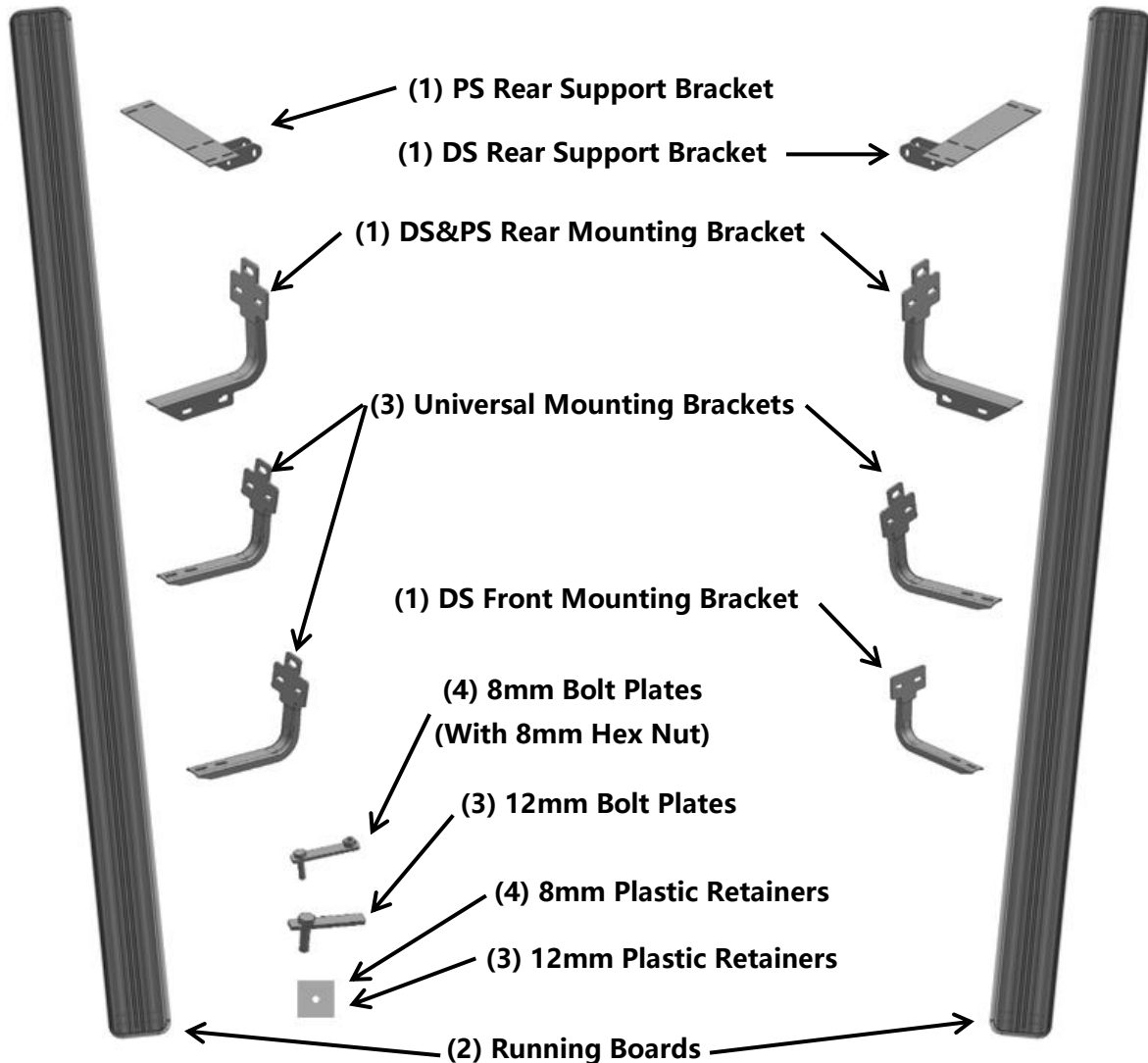


PARTS LIST			HARDWARE LIST		
Item	QTY	Description	Item	QTY	Description
#1	2	Running Board (use for left or right)	#1	5	12mm Hex Nuts
#2	1	DS Front Mounting Bracket	#2	5	12mm x 37mm OD x 3mm Flat Washers
#3	3	Universal Mounting Brackets	#3	5	12mm Lock Washers
#4	1	DS&PS Rear Mounting Brackets	#4	4	10mm x 70mm Hex Bolts
#5	1	DS Rear Support Bracket	#5	8	10mm x 30mm OD x 2.5mm Flat Washers
#6	1	PS Rear Support Bracket	#6	4	10mm Hex Nuts
#7	6	8mm Bolt Plates (With 8mm Hex Nut)	#7	4	10mm Lock Washers
#8	5	12mm Bolt Plates	#8	6	8mm Hex Nuts
#9	6	8mm Plastic Retainers	#9	12	8mm x 24mm OD x 2mm Flat Washers
#10	5	12mm Plastic Retainers	#10	12	8mm Lock Washers
			#11	12	8mm x 30mm Hex Bolts
			#12	20	6mm x 22mm OD x 2mm Flat Washers
			#13	20	6mm Nylon Lock Nuts
			#14	20	6mm x 20mm T-Bolts

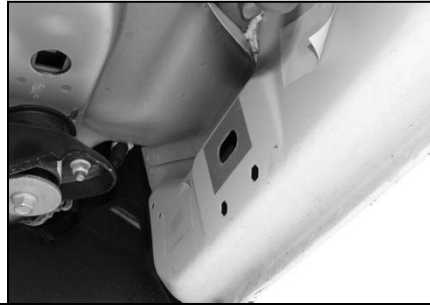


## PROCEDURE

### STEP 1

Starting at the PS Front of the vehicle, remove the sealing tape covering the factory holes in the side of the inner panel

**NOTE: Models with factory threaded holes, skip to STEP 5**



2009-mid 2015 PS Front Mounting location (No factory holes in pinch weld 2009-2011 models)

### STEP 2

Thread (1) 8mm Hex Bolt into the nut on the plate. Stop when bolt reaches end of nut as pictured



### STEP 3

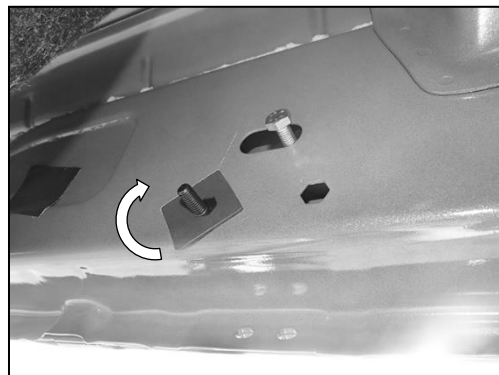
Use the loose Hex Bolt as a handle. Insert the Bolt Plate into the oval hole and feed the threaded end out either factory hex shaped hole.

**IMPORTANT:** Do not let go of the hex bolt until after Plastic Retainer has been threaded onto bolt



### STEP 4

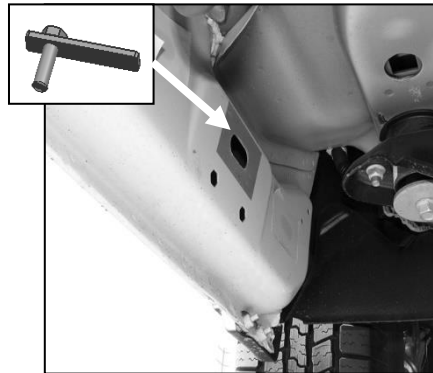
Rotate the Bolt on the Bolt Plate until the threaded nut lines up with the remaining hole in the Mounting Bracket and body panel



**PROCEDURE**

**STEP 5**

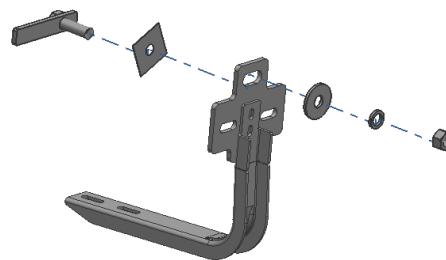
Insert (1) 12mm Bolt Plate into the upper slot of the vehicle. Use (1) 12mm Plastic Retainer to hold the bolt plate.



**Upper Slot Installation**

**STEP 6**

Attach the Mounting Bracket to the 12mm Bolt Plate with (1) 12mm Hex Nut (1) 12mm Flat Washer (1) 12mm Lock Washer

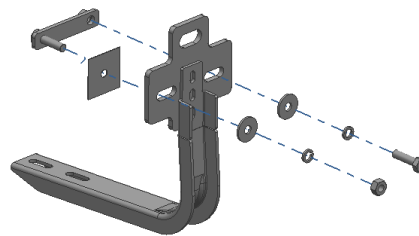


**Lower Slot Installation**

Model **without** factory thread holes

**STEP 7A**

Attach the Mounting Brackets to the vehicle with (2) 8mm Flat Washers (2) 8mm Lock Washers (1) 8mm Hex Bolt (1) 8mm Hex Nuts

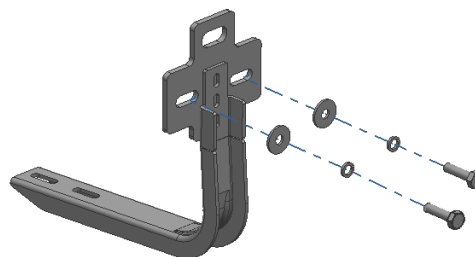


**Lower Slot Installation**

Model **with** factory thread holes

**STEP 7B**

Attach the Mounting Brackets to the vehicle with (2) 8mm Flat Washers (2) 8mm Lock Washers (2) 8mm Hex Bolts



**PROCEDURE**

**STEP 8**

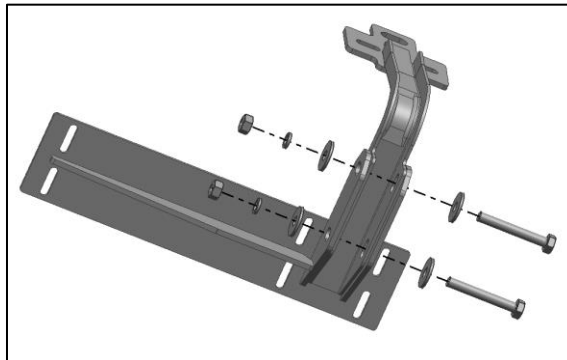
Repeat **STEP 1-7** to install all Universal Mounting Brackets

**STEP 9**

Repeat **STEP 1-7** to install (2) DS&PS Rear Mounting Brackets.

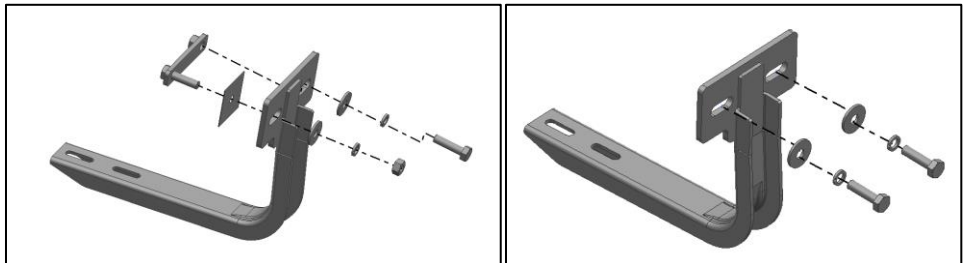
**STEP 10**

Attach the DS and PS Support Brackets to the Rear Mounting Brackets with:  
(2)10mm x 70mm Hex Bolts  
(2)10mm Lock Washers  
(4)10mm(30 OD) Flat Washers  
(2)10mm Hex Nuts



**STEP 11**

Repeat **STEP 1-4, STEP 7** to install DS Front Mounting Bracket



**PROCEDURE**

**STEP 12**

Slip 6mm x 20mm T-Bolts into the bottom channel

**NOTE: (5) T-Bolts for each channel**



**STEP 13**

Attach the Running Board to the Mounting Brackets with 6mm T-Bolts  
6mm(22 OD) Flat washers  
6mm Lock Nuts

**NOTE: Same installation for other brackets**

