



PART#: IB-P064Y&H

iBoard® Series

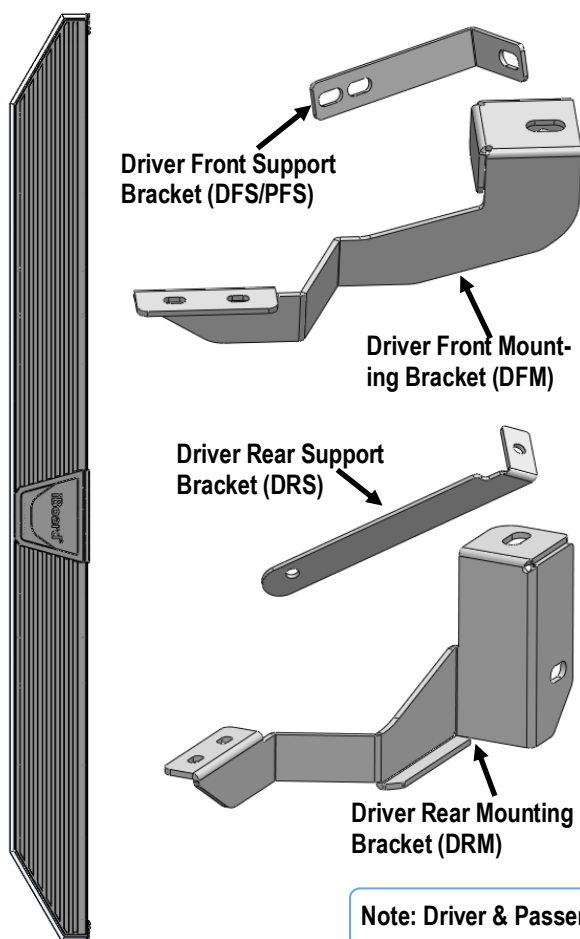
READ INSTRUCTIONS CAREFULLY BEFORE STARTING INSTALLATION. REMOVE CONTENTS FROM BOX AND VERIFY ALL PARTS ARE PRESENT. ASSISTANCE IS RECOMMENDED.

*BODY FRAME MOUNT
*NO DRILLING REQUIRED

Fastener Size	Tightening Torque (ft-lbs)	Required
6mm	6-7	√
8mm	16-18	√
10mm	31-32	√
12mm	56-58	√
14mm	92-94	X

PART LIST

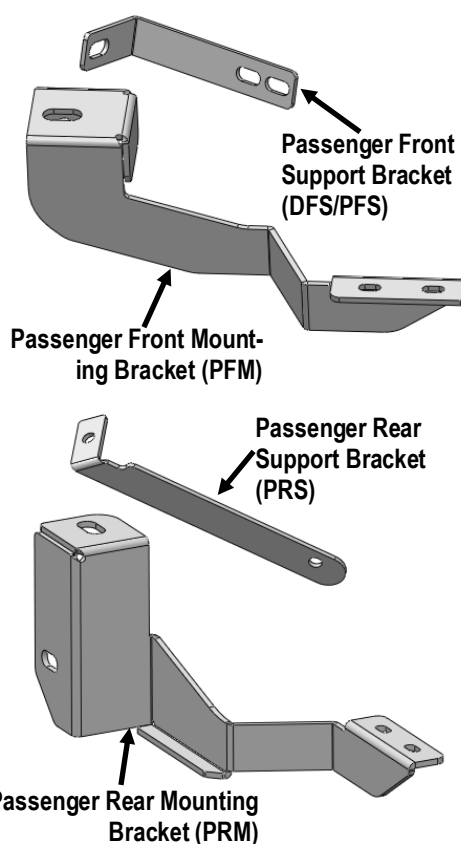
Driver Side Step Bar



Front



Passenger Side Step Bar



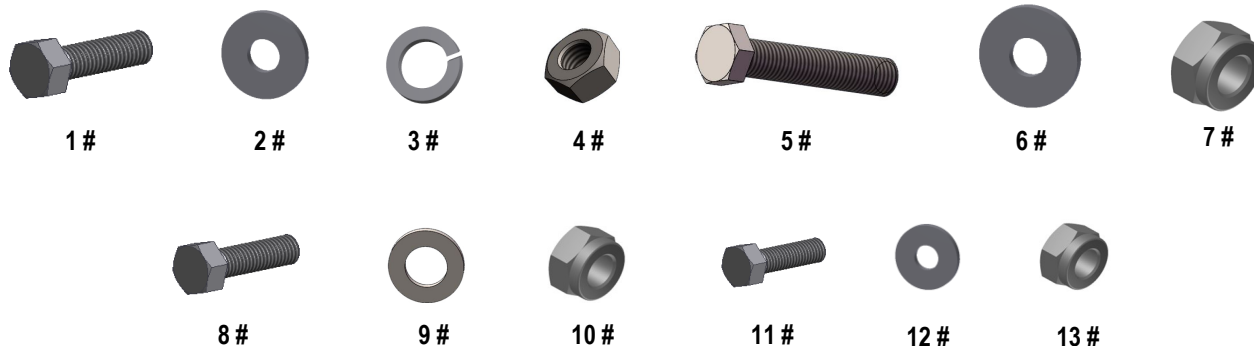
Note: Driver & Passenger Front Support Brackets are universal.



Scan for
Installation Video

Hardware Package A (For Bracket Installation)

Item	QTY	Description	Item	QTY	Description
1#	6	M10X1.5-30mm Hex Bolts	8#	2	M8X1.25-25mm Hex Bolts
2#	12	M10 Flat Washers	9#	4	M8 Flat Washers
3#	6	M10 Lock Washers	10#	2	M8X1.25 Nylon Lock Nuts
4#	6	M10 Hex Nuts	11#	2	M6X1-30mm Hex Bolts
5#	2	M12X1.75-100mm Hex Bolts	12#	4	M6 Large Flat Washers
6#	4	M12 Flat Washers	13#	2	M6 Nylon Lock Nuts
7#	2	M12 Nylon Lock Nuts			



Hardware Package B (For Stainless Steel Step Bar Installation)

Item	QTY	Description	Item	QTY	Description
1#	8	M8X1.25-35mm Carriage Bolts	3#	8	M8 Nylon Lock Nuts
2#	8	M8 Large Flat Washers	4#	4	Sliders (Packed with Mounting Brackets)



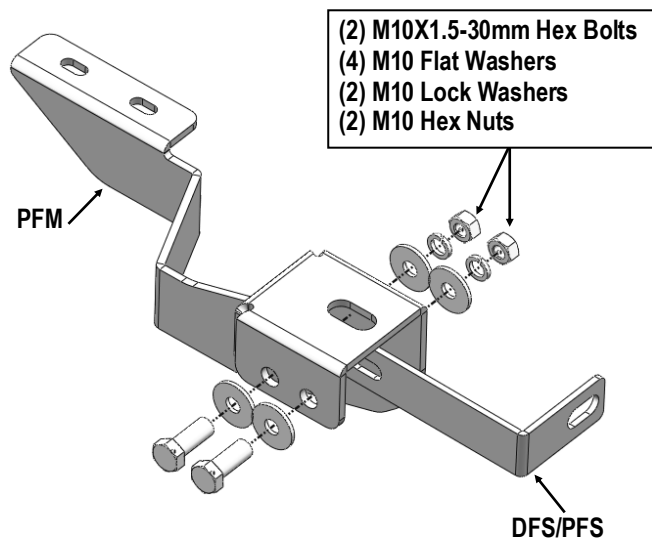


STEP 1

Start installing from the passenger side front of the vehicle. Remove the passenger front body mount bolt.

STEP 2

Assemble Passenger Front Mounting Bracket (**PFM**) and Passenger Front Support Bracket (**DFS/PFS**) with (2) M10X1.5-30mm Hex Bolts, (4) M10 Flat Washers, (2) M10 Lock Washers and (2) M10 Hex Nuts, (**Figs 1&3**). Do not fully tighten hardware at this time.

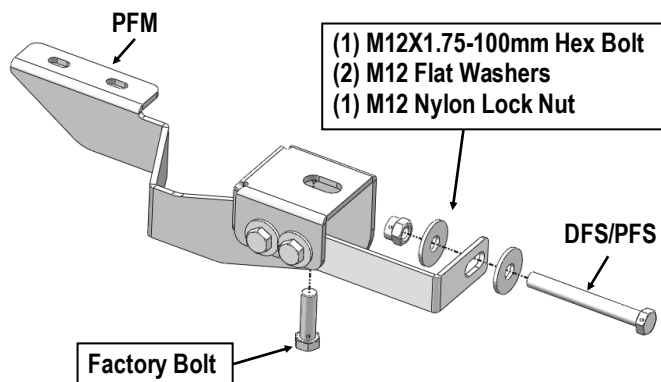


(Fig 1) Passenger Side Front Brackets Assembly

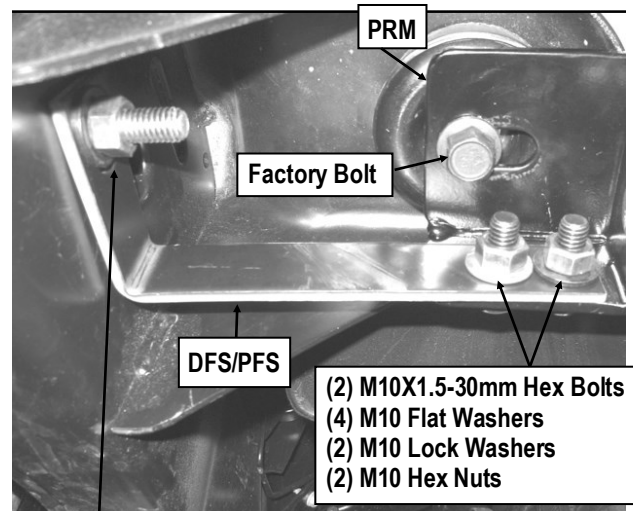
STEP 3

Attach the assembled Passenger Front Mounting Bracket (**PFM**) to the vehicle with factory bolt, (**Figs 2 & 3**).

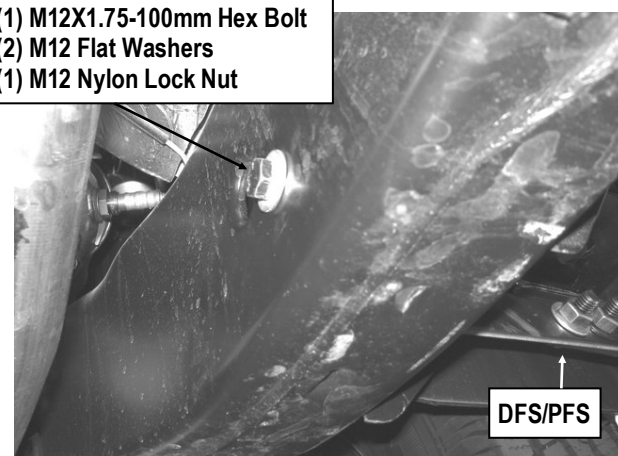
Attach Passenger Front Support Bracket (**DFS/PFS**) to smaller factory hole in the frame by using (1) M12X1.75-100mm Hex Bolt, (1) M12 Nylon Lock Nut, (2) M12 Flat Washers, (**Fig 2 & 3**). Do not fully tighten hardware at this time.



(Fig 2) Passenger Side Front Brackets Installation



(1) M12X1.75-100mm Hex Bolt
(2) M12 Flat Washers
(1) M12 Nylon Lock Nut



(Fig 3) Passenger Side Front Brackets Installed

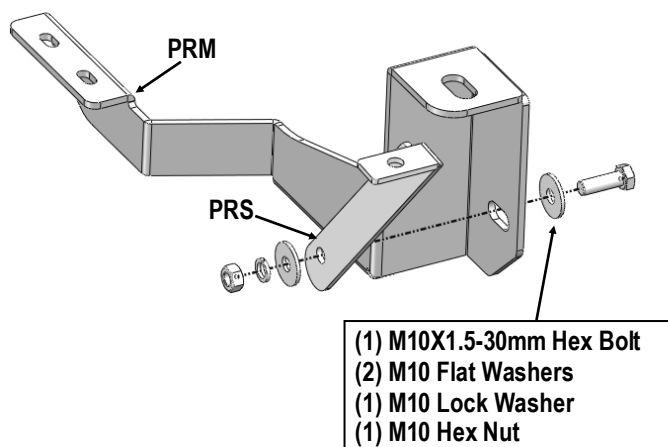


STEP 4

Move to the passenger side rear mounting location. Remove the passenger rear body mount bolt.

STEP 5

Assemble Passenger Rear Mounting Bracket (**PRM**) and Passenger Rear Support Bracket (**PRS**) with (1) M10X1.5-30mm Hex Bolt, (2) M10 Flat Washers, (1) M10 Lock Washer and (1) M10 Hex Nut, (**Fig 4**). Do not fully tighten hardware at this time.



(Fig 4) Passenger Side Rear Brackets Assembly

STEP 6

Attach the assembled Passenger Rear Mounting Bracket (**PRM**) to the vehicle with factory bolts, (**Fig 5 & 6**).

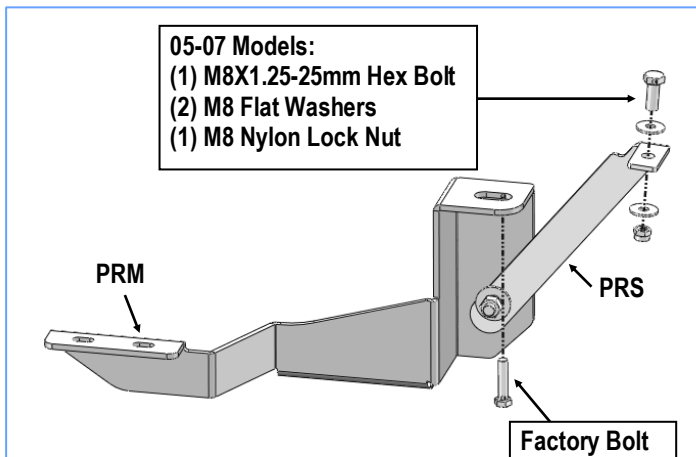
Attach Passenger Rear Support Bracket (**PRS**) to the factory hole on the inner side of body mount cavity and closer to the frame using:

05-07 Models:

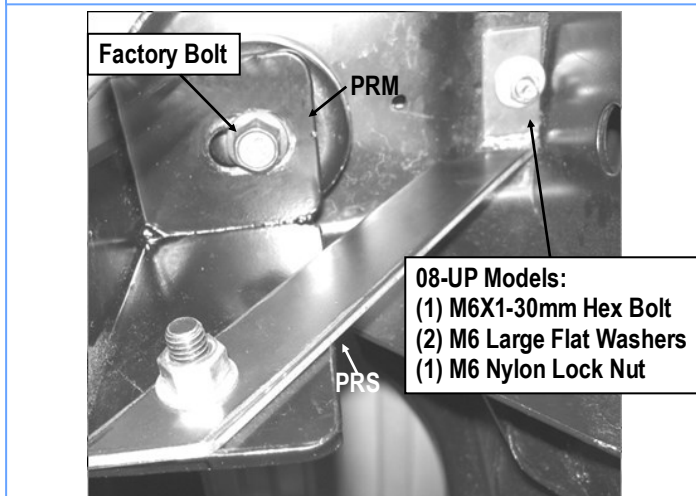
(1) M8X1.25-25mm Hex Bolt, (1) M8 Nylon Lock Nut, (2) M8 Flat Washers (**Fig 5**). Do not fully tighten hardware at this time.

08-UP Models:

(1) M6X1-30mm Hex Bolt, (1) M6 Nylon Lock Nut, (2) M6 Flat Washers (**Fig 6**). Do not fully tighten hardware at this time.



(Fig 5) Passenger Side Rear Brackets Installation (05-07 Models)



(Fig 6) Passenger Side Rear Brackets Installed (08-UP Models)

STEP 7

Once all (2) Passenger side mounting brackets are installed, then proceed to the Step Bar installation. (**Figs 7 & 8**)

(1) Select (1) Slider and (2) M8X1.25-35mm Carriage Bolts;

(2) Install (2) M8X1.25-35mm Carriage Bolts in (1) Slider.

(3) Slide the Slider (with carriage bolts) to the **Step Bar**.

(4) Repeat to install the other (1) slider to the step bar.

(5) Attach the Step Bar (with the Sliders) onto the installed mounting brackets. Position the Sliders to the installed back-



ets. Secure the Step Bar to the installed Brackets by using (4) M8 Large Flat Washers and (4) M8 Nylon Lock Nuts and (2) Sliders, **(Fig 8)**. Do not fully tighten hardware at this time.

Note: The Sliders are packed with the Mounting Brackets.

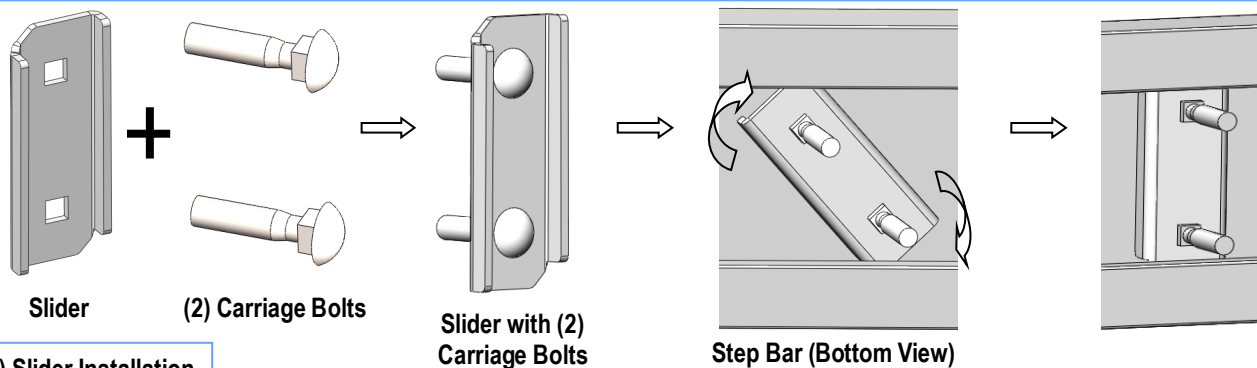
Level and adjust the Step Bar and fully tighten all hardware.

Repeat **Steps 1-7** for the other side Step Bar installation. **The installation is completed!!!**

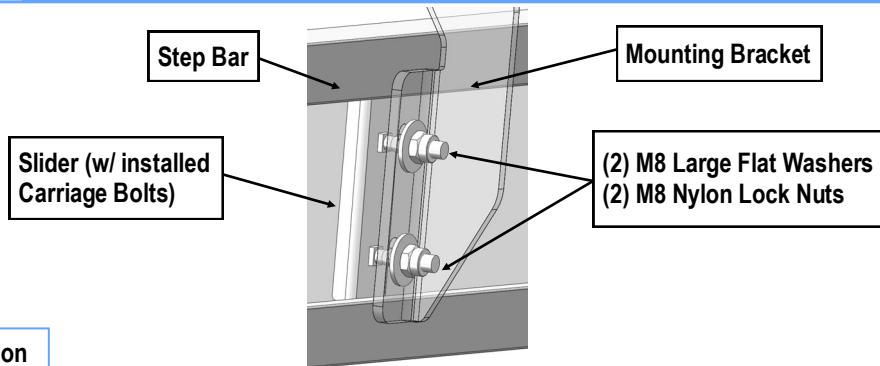
Attention

Do periodic inspections to the installation to make sure that all hardware is secure and tight.

In order to protect your bars/boards, please use mild soap/non-abrasive products for cleaning only.



(Fig 7) Slider Installation



(Fig 8) Step Bar Installation