

iBoard®

iBoard® by APS

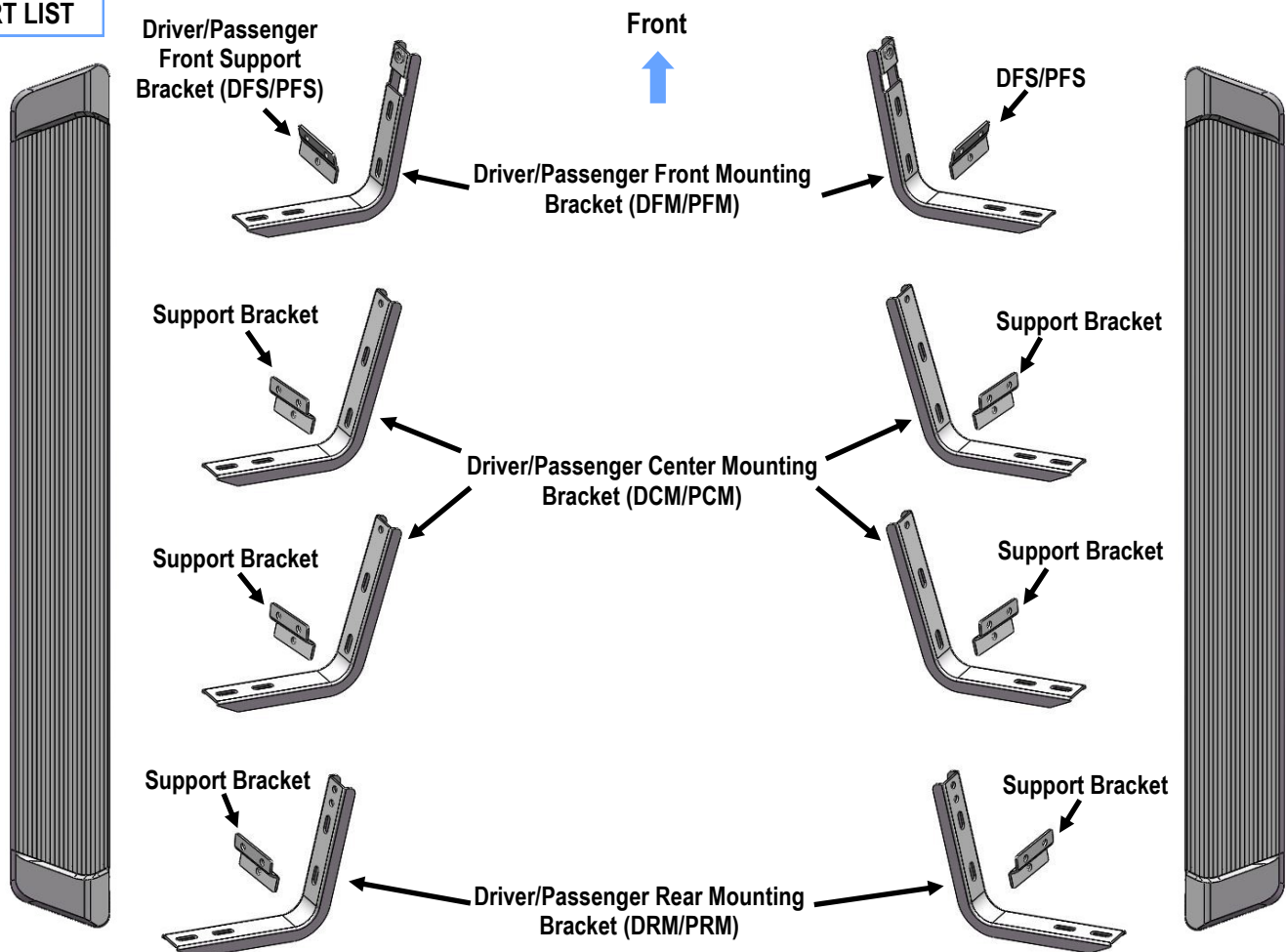
PART#: IB-R048

READ INSTRUCTIONS CAREFULLY BEFORE STARTING INSTALLATION. REMOVE CONTENTS FROM BOX AND VERIFY ALL PARTS ARE PRESENT. ASSISTANCE IS RECOMMENDED.

*ROCKER PANEL MOUNT
*DRILLING IS REQUIRED

Fastener Size	Tightening Torque (ft-lbs)
6mm	6-7
8mm	16-18
10mm	31-32
12mm	56-58
14mm	92-94

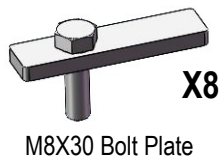
PART LIST



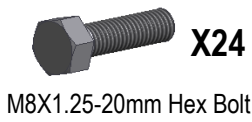
Note: *(6) Support Brackets Are Universal

Customer Support: info@iboardauto.com

iBoard®



M8X30 Bolt Plate



M8X1.25-20mm Hex Bolt



M8 Flat Washer



M8 Hex Flange Nut



M6X1-20mm Square Head Bolt



M6 Large Flat Washer

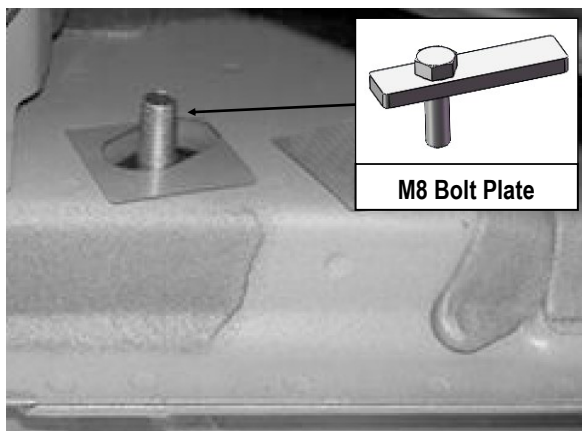


M6 Nylon Lock Nut

STEP 1

Start installation from the driver side of the vehicle. Locate (8) mounting positions along the rocker panel.

Insert (4) M8 Bolt Plates into the oval holes (Use the 2nd, 4th, 6th and 8th holes), (Fig 1).

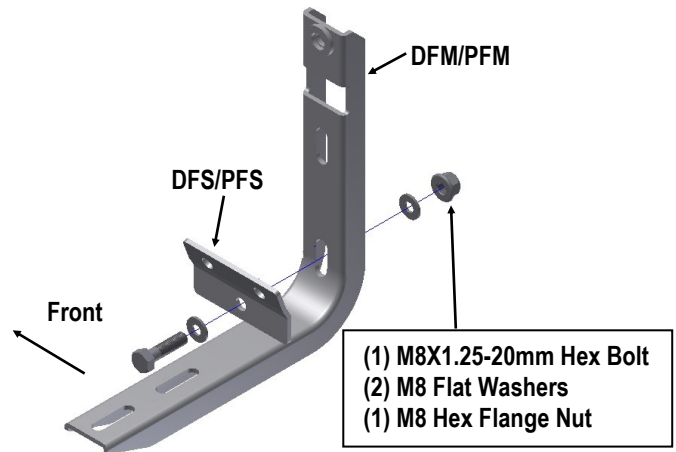


(Fig 1) Insert the M8 Bolt Plate (Use the 2nd, 4th, 6th, 8th holes)

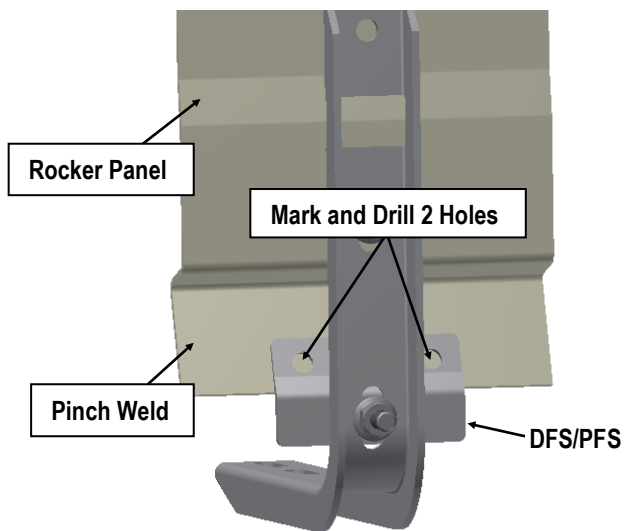
STEP 2

Assemble Driver Front Mounting Bracket (DFM/PFM) and the Driver Front Support Bracket (DFS/PFS) with (1) M8X1.25-20mm Hex Bolt, (2) M8 Flat Washers and (1) M8 Hex Flange Nut. Don't fully tighten at this time, (Fig 2).

Attach the assembled Driver Front Mounting Bracket onto the rocker panel. According to the position of Driver Front Support Bracket (DFS/PFS), mark and drill 2 holes on the pinch weld, (Fig 3).



(Fig 2) Driver Side Front Mounting Bracket Assembly

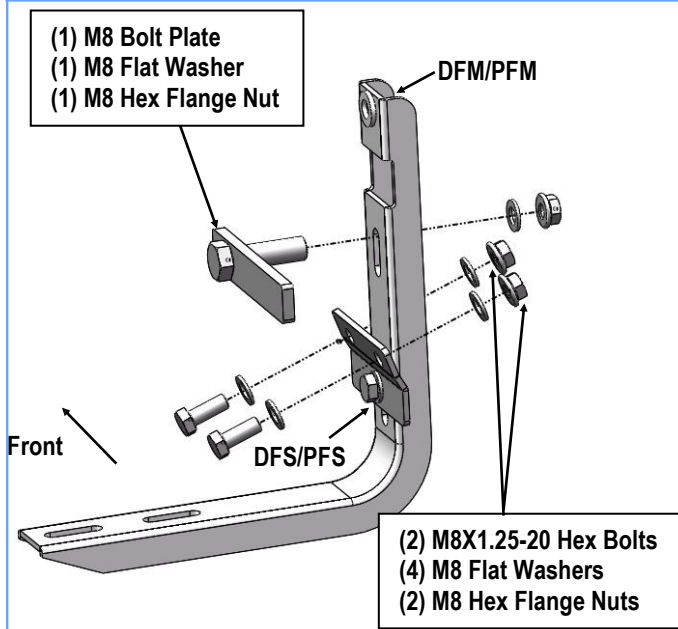


(Fig 3) Mark And Drill 2 Holes on The Pinch Weld

iBoard®

STEP 3

Install the assembled Driver Front Mounting Bracket on the rocker panel and pinch weld with (1) M8 Bolt Plate, (2) M8X1.25-20mm Hex Bolts, (5) M8 Flat Washers, (3) M8 Hex Flange Nuts, (Fig 4). Do not fully tighten at this time.



(Fig 4) Driver Side Front Mounting Bracket Installed

STEP 4

Move to the driver side 4th & 6th & 8th of the vehicle. Repeat **Steps 1-3** for (2) Driver Center Mounting Brackets (DCM/PCM), (1) Driver Rear Mounting Bracket (DRM/PRM) and (3) Support Brackets assembly and installation. Do not fully tighten at this time.

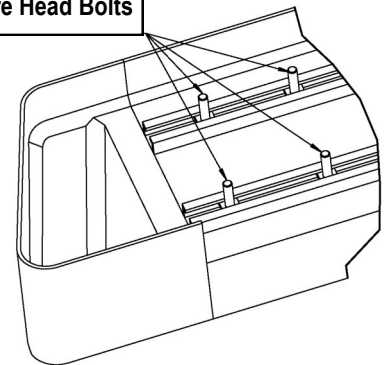
Note: (6) Support Brackets are universal.

STEP 5

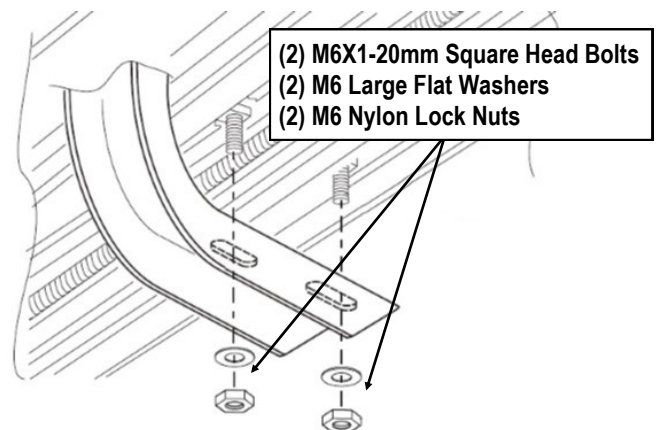
Select a Running Board. Slip (4) M6x1-20mm Square Head Bolts into each bottom channel (Fig 5). Carefully position the Running Board onto the (4) Mounting Brackets.

IMPORTANT: Do not slide the Running Board on the Brackets or the bottom surface of the board will be damaged. Attach the Running Board to each Mounting Bracket with (2) M6x1-20mm Square Head Bolts, (2) M6 Large Flat Washers and (2) M6 Nylon Lock Nuts (Fig 6). Do not fully tighten at this time.

M6X1-20mm Square Head Bolts



(Fig 5) Slip M6X1-20mm Square Head Bolts Into The Bottom Channels



(Fig 6) Running Board Installed Onto Mounting Bracket

iBoard®

STEP 6

Level and adjust the Running Board and fully tighten all hardware.

Important: Please follow the recommended Tightening Torques shown in the table on page 1. Don't over tighten, or the nuts/bolts will be damaged.

STEP 7

Repeat **Steps 1-4** for the other side Running Board installation. The installation is completed.

Attention

Do periodic inspections to the installation to make sure that all hardware is secure and tight.

In order to protect your bars/boards, please use only mild soap/non-abrasive products for cleaning.