

# iBoard®

## iBoard® by APS

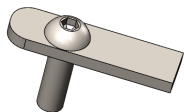
PART#: IB-002A&B

READ INSTRUCTIONS CAREFULLY BEFORE STARTING INSTALLATION. REMOVE CONTENTS FROM BOX AND VERIFY ALL PARTS ARE PRESENT. ASSISTANCE IS RECOMMENDED.

\*ROCKER PANEL MOUNT  
\*NO DRILLING REQUIRED

Fastener Size	Tightening Torque (ft-lbs)
6mm	6-7
8mm	16-18
10mm	31-32
12mm	56-58
14mm	92-94

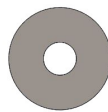
Item	QTY	Description	Item	QTY	Description
1#	2	Driver Front Mounting Brackets	10#	6	M10 Lock Washers
2#	2	Passenger Front Mounting Brackets	11#	6	M10X1.5 Hex Nuts
3#	1	Passenger Center Mounting Bracket	12#	12	M8X1.25-25mm Hex Bolts
4#	1	Driver Center Mounting Bracket	13#	12	M8 Large Flat Washers
5#	3	Passenger Support Brackets	14#	12	M8 Flat Washers
6#	3	Driver Support Brackets	15#	12	M8X1.25 Nylon Lock Nuts
7#	6	M10X35 Bolt Plates	16#	12	M6X1-20mm Square Head Bolts
8#	6	M10 Plastic Washers	17#	12	M6 Large Flat Washers
9#	6	M10 Large Flat Washers	18#	12	M6X1 Nylon Lock Nuts



7#



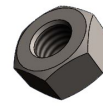
8#



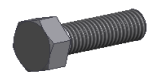
9#



10#



11#



12#



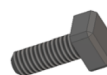
13#



14#



15#



16#



17#



18#

Customer Support: [info@iboardauto.com](mailto:info@iboardauto.com)

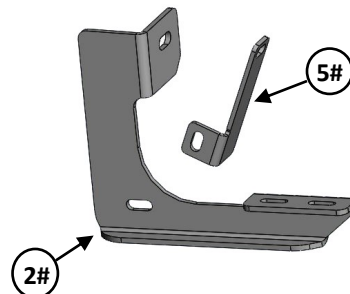
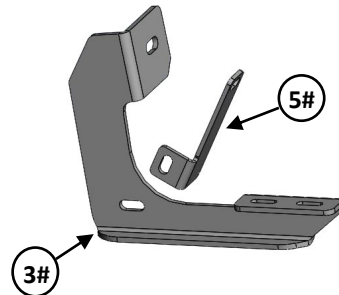
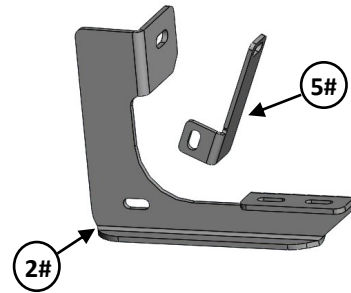
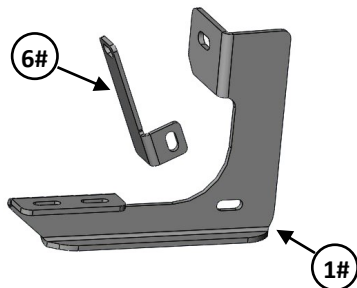
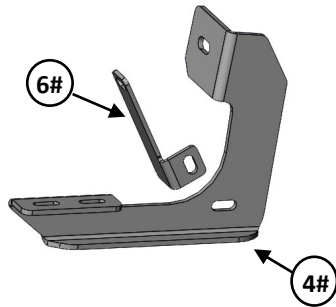
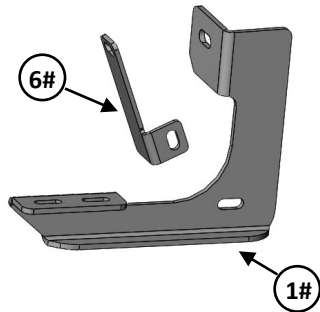
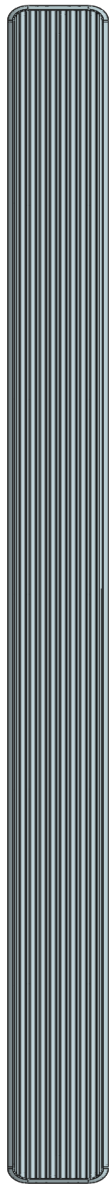
# iBoard®

Driver

Front



Passenger



# iBoard®

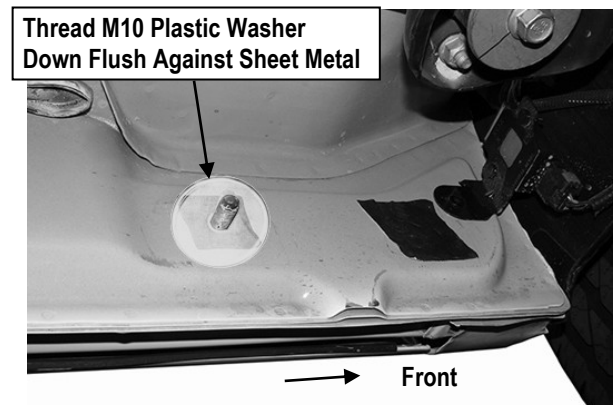
## STEP 1

Starting toward the front of the driver side, locate the (2) oval holes in the inner body panel. Remove the tape covering the second factory hole, **(Fig 1)**. Thread (1) M10 Plastic Washer onto (1) M10X35 Bolt Plate. Insert the M10X35 Bolt Plate into the factory hole on the rocker panel. Hold the M10X35 Bolt Plate in place with one hand and continue to thread the M10 Plastic Washer down against the sheet metal until it holds the M10X35 Bolt Plate in place, **(Fig 2)**.

**IMPORTANT:** The Plastic Washer is designed to prevent the Bolt Plate from falling into the body panel and to aid Bracket installation.



**(Fig 1)** Driver Front Mounting Bracket (DFM/DRM) Location

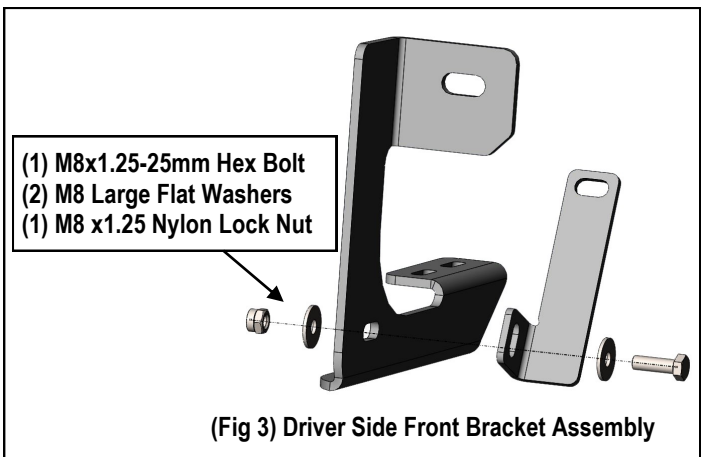


**(Fig 2)** Driver Side Front Mounting Location

## STEP 2

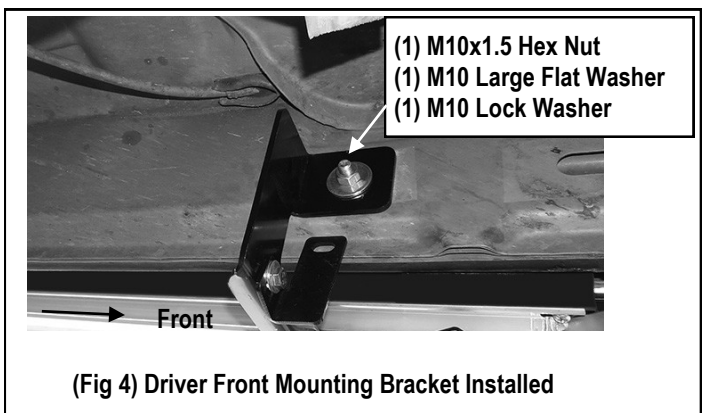
Select and assemble (1) Driver Front Mounting Bracket (**DFM/DRM**) and (1) Driver Support Bracket (**DFS/DCS/DRS**) with (1) M8x1.25-25mm Hex Bolt, (2) M8 Large Flat Washers and (1) M8 x1.25 Nylon Lock Nut, **(Fig 3)**. Do not fully tighten hardware at this time.

**NOTE:** Place the flat end of the Support Bracket up against the pinch weld at the bottom of the body panel.



## STEP 3

Attach the Assembled Driver Front Mounting Bracket to the M10X35 Bolt Plate with (1) M10 Large Flat Washer, (1) M10 Lock Washer and (1) M10x1.5 Hex Nut, **(Fig 4)**. Do not fully tighten hardware at this time.

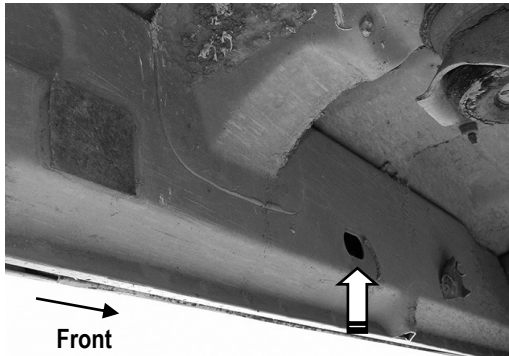


**(Fig 4)** Driver Front Mounting Bracket Installed

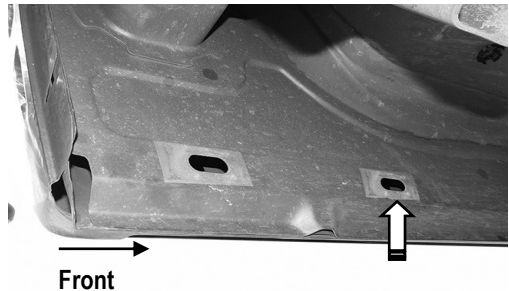
# iBoard®

## STEP 4

Next, move to the driver center & rear mounting location, (**Fig 5 & 6**). Repeat **Steps 1-3** to install the Driver Center & Rear Mounting Brackets, (**Fig 7 & 8**). Do not fully tighten hardware at this time.

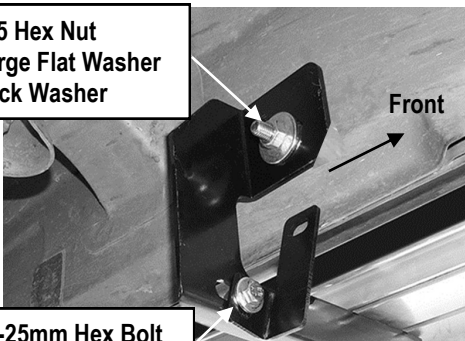


(Fig 5) Driver Center Mounting Bracket Location



(Fig 6) Driver Rear Mounting Bracket Location

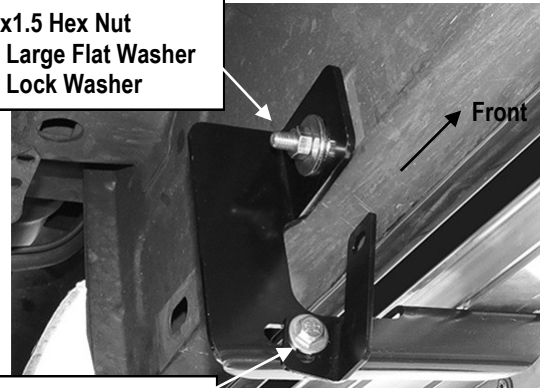
- (1) M10x1.5 Hex Nut
- (1) M10 Large Flat Washer
- (1) M10 Lock Washer



- (1) M8x1.25-25mm Hex Bolt
- (2) M8 Large Flat Washers
- (1) M8 x1.25 Nylon Lock Nut

(Fig 7) Driver Side Center Brackets Installation

- (1) M10x1.5 Hex Nut
- (1) M10 Large Flat Washer
- (1) M10 Lock Washer



- (1) M8x1.25-25mm Hex Bolt
- (2) M8 Large Flat Washers
- (1) M8 x1.25 Nylon Lock Nut

(Fig 8) Driver Side Rear Brackets Installation

## STEP 5

Select a Running Board. Slip (3) M6x1-20mm Square Head Bolts into each bottom channel (**Fig 9**). Carefully position the Running Board onto the (3) Mounting Brackets.

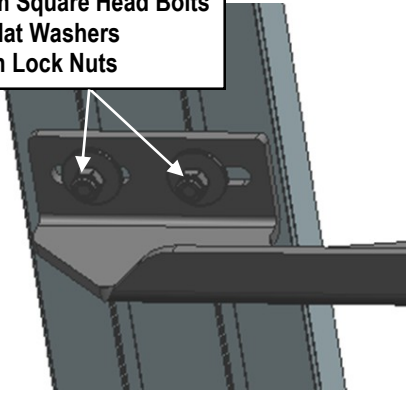
**IMPORTANT:** Do not slide the Running Board on the Brackets or the bottom surface of the board will be damaged. Attach the Running Board to each Mounting Brackets with (2) M6x1-20mm Square Head Bolts, (2) M6 Large Flat Washers and (2) M6 X1 Nylon Lock Nuts (**Fig 10**). Do not fully tighten at this time.



(Fig 9) Slip M6X1-20mm Square Head Bolts Into The Bottom Channels

# iBoard®

- (2) M6X1-20mm Square Head Bolts
- (2) M6 Large Flat Washers
- (2) M6X1 Nylon Lock Nuts

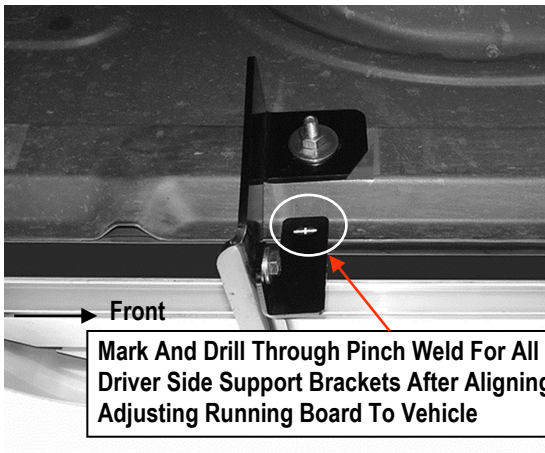


(Fig 10) Running Board Installed Onto Mounting Bracket

## STEP 6

Move back to the (3) Driver Support Brackets up against the underside of the body and flat against the back of the pinch weld. Mark the location of the center of the slot onto the pinch weld, (Fig 11). Adjust Mounting Brackets up or down to level the Running Board and line up the Support Brackets above the bottom edge of the pinch weld. Repeat as necessary to line up and mark all (3) Driver Support Bracket locations.

**IMPORTANT:** Make sure do not mark too close to the edge of the pinch weld.



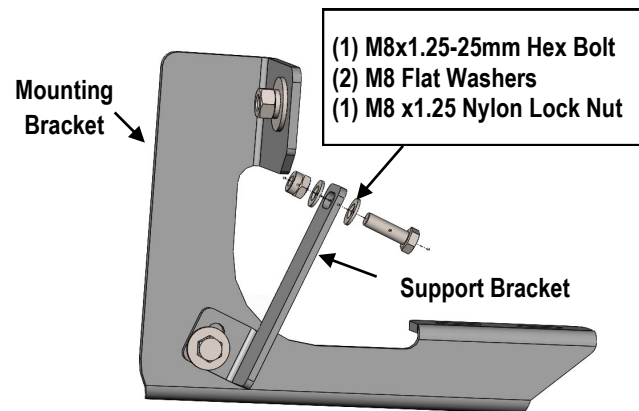
Mark And Drill Through Pinch Weld For All 3 Driver Side Support Brackets After Aligning-Adjusting Running Board To Vehicle

(Fig 11) Driver Side Rear Bracket Pictured

## STEP 7

Drill (3) 5/16" (or 8mm) through holes on the pinch weld for all (3) Driver Support Brackets **IMPORTANT: Make sure do not drill too close to the edge of the pinch weld.**

Bolt each Support Bracket to the back of the pinch weld with (1) M8x1.25-25mm Hex Bolt, (2) M8 Flat Washers and (1) M8 x1.25 Nylon Lock Nut, (Fig 12).



(Fig 12) Driver Support Bracket Installation

## STEP 8

Level and adjust the Running Board and fully tighten all hardware.

## STEP 9

Repeat **Steps 1-8** for the other side Running Board installation. The installation is completed (Fig 13).

# iBoard®



(Fig 13) Installation Completed

## **Attention**

**Do periodic inspections to the installation to make sure that all hardware is secure and tight.**

**In order to protect your bars/boards, please use only mild soap/non-abrasive products for cleaning.**