

iBoard®

iBoard® by APS

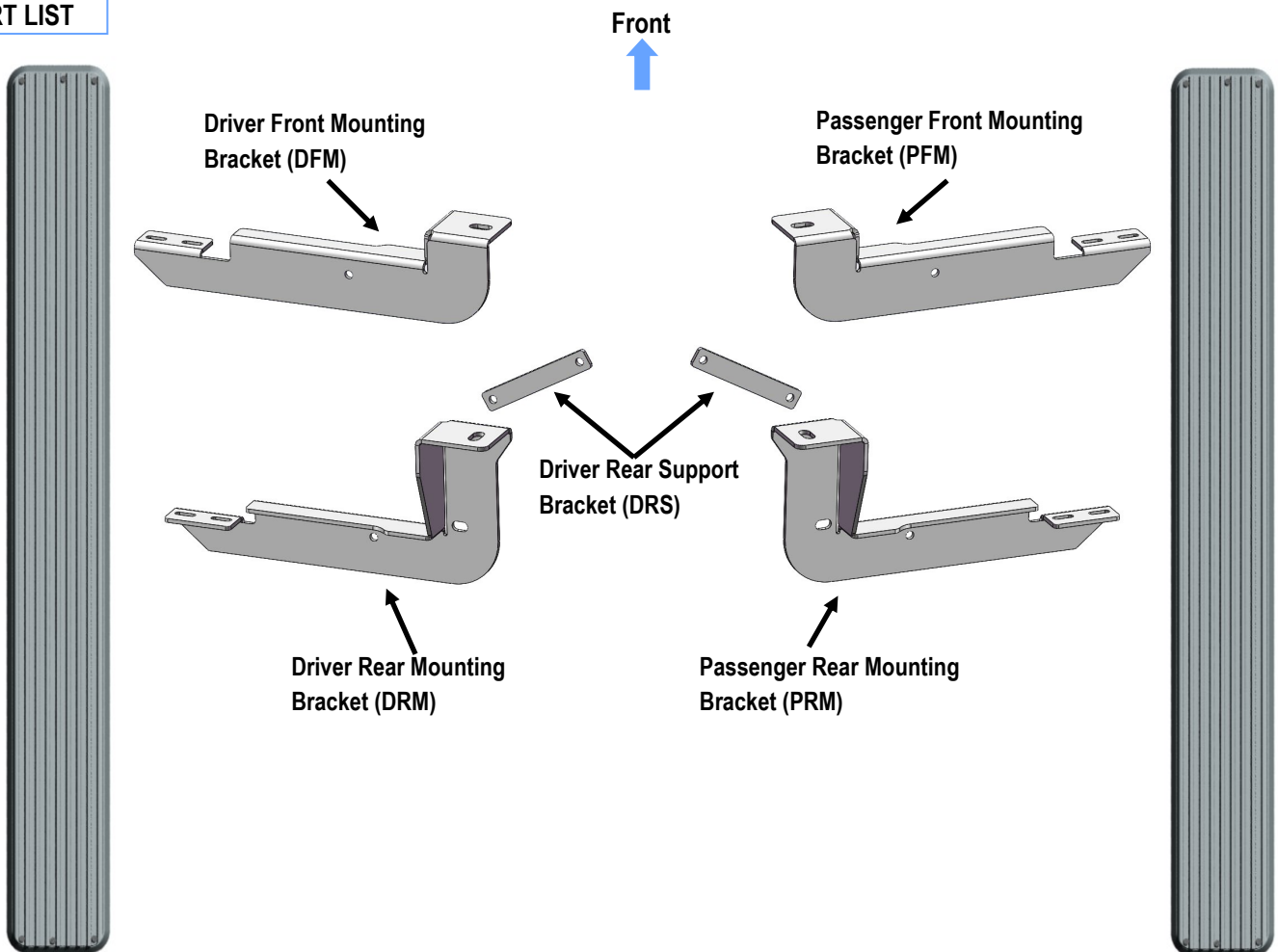
PART#: IB-045A-B

READ INSTRUCTIONS CAREFULLY BEFORE STARTING INSTALLATION. REMOVE CONTENTS FROM BOX AND VERIFY ALL PARTS ARE PRESENT. ASSISTANCE IS RECOMMENDED.

*BODY FRAME MOUNT
*DRILLING IS REQUIRED

Fastener Size	Tightening Torque (ft-lbs)
6mm	6-7
8mm	16-18
10mm	31-32
12mm	56-58
14mm	92-94

PART LIST



Customer Support: info@iboardauto.com

iBoard®



X4

M12X1.75-110mm Hex Bolt



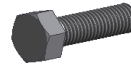
X4

M12 Flat Washer



X4

M12 Lock Washer



X4

M8X1.25-25mm Hex Bolt



X8

M8 Large Flat Washer



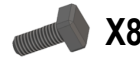
X4

M8 Lock Washer



X4

M8 Hex Nut



X8

M6X1-20mm Square Head Bolt



X8

M6 Large Flat Washer



X8

M6X1 Nylon Lock Nut

STEP 1

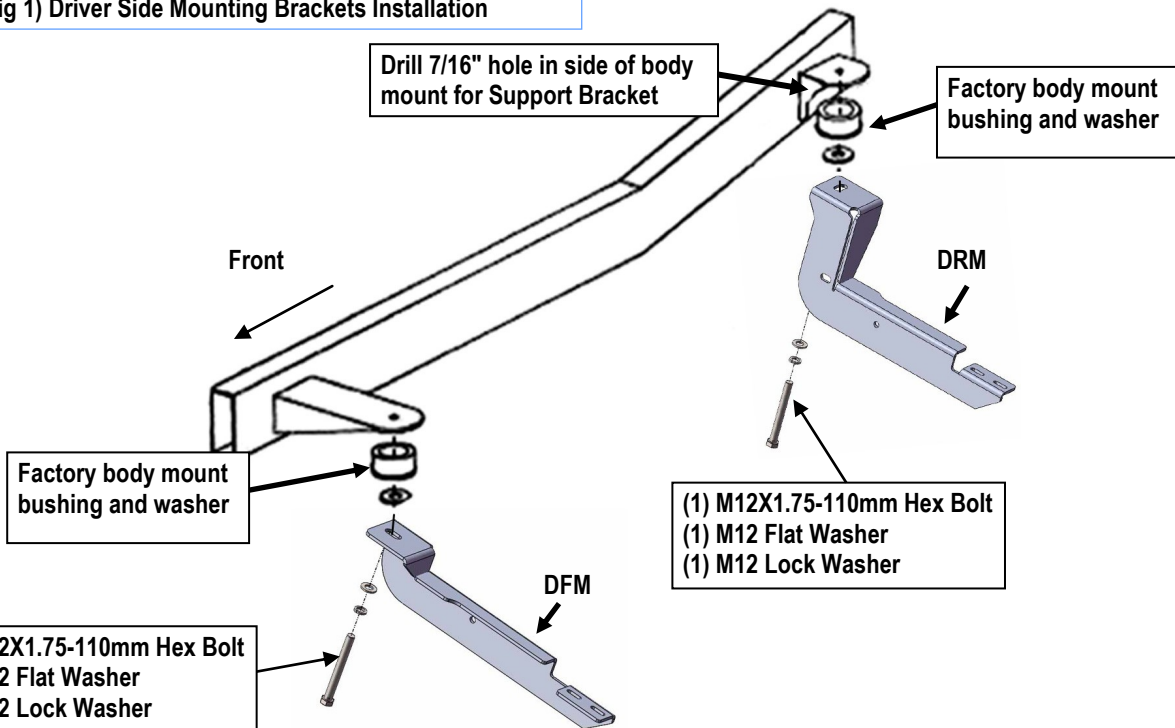
Start installation from the driver side front of the vehicle. Remove the front body mount bolt from body mount.

Select the Driver Front Mounting Bracket (**DFM**). Bolt the mounting bracket to the vehicle with (1) M12X1.75-110mm Hex Bolt, (1) M12 Flat Washer, and (1) M12 Lock Washer (**Fig 1**). Do not fully tighten hardware at this time.

STEP 2

Move to driver side rear of the vehicle. Repeat **Step 1** for Driver Rear Mounting Bracket (**DRM**) installation, (**Fig 1**). Do not fully tighten hardware at this time.

(Fig 1) Driver Side Mounting Brackets Installation

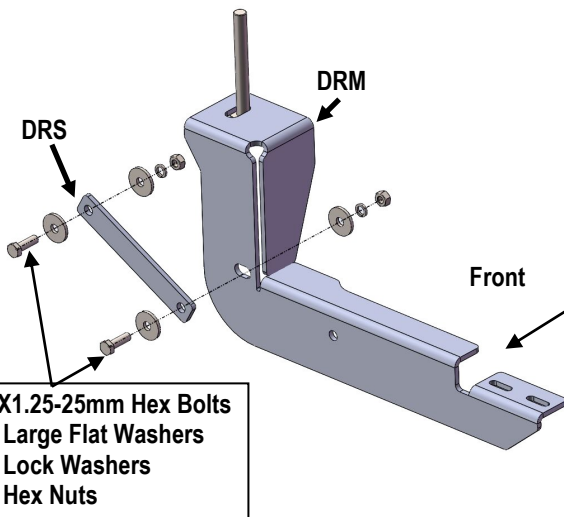


Customer Support: info@iboardauto.com

iBoard®

STEP 3

Select the Driver Rear Support Bracket (**DRS**). Attach the Support Bracket to the front side of the Driver Rear Mounting Bracket using the included (1) M8X1.25-25mm Hex Bolt, (1) M8 Lock Washer, (2) M8 Large Flat Washers and (1) M8 Hex Nut, (**Fig 2**). Do not fully tighten hardware at this time.



(Fig 2) Driver Rear Support Bracket (DRS) Installation

STEP 4

Line up the opposite end of the Support Bracket with the gusset on the steel body mount housing. Using the remaining hole in the Support Bracket as a template, mark and carefully drill a 7/16" hole through the side of the body mount bracket., (**Fig 1**).

IMPORTANT! Any cutting or drilling tool may break or shatter. Government regulations require safety glasses & equipment at all times when cutting or drilling.

Attach the Support Bracket to the drilled hole with (1) M8X1.25-25mm Hex Bolt, (1) M8 Lock Washer, (2) M8 Large Flat Washers and (1) M8 Hex Nut, (**Fig 2**). Do not fully tighten hardware at this time.

STEP 5

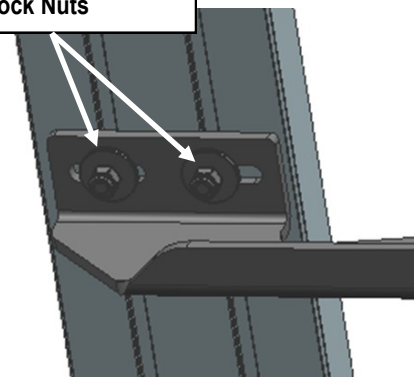
Select a Running Board. Slip (2) M6x1-20mm Square Head Bolts into each bottom channel (**Fig 3**). Carefully position the Running Board onto the (2) Mounting Brackets.

IMPORTANT: Do not slide the Running Board on the Brackets or the bottom surface of the board will be damaged. Attach the Running Board to Mounting Bracket with (4) M6x1-20mm Square Head Bolts, (4) M6 Large Flat Washers and (4) M6 X1 Nylon Lock Nuts (**Fig 4**). Do not fully tighten hardware at this time.



(Fig 3) Slip M6X1-20mm Square Head Bolts Into The Bottom Channels

(2) M6X1-20mm Square Head Bolts
(2) M6 Large Flat Washers
(2) M6X1 Nylon Lock Nuts



(Fig 4) Running Board Installed Onto the Mounting Bracket (Example)

iBoard®

STEP 6

Level and adjust the Running Board and fully tighten all hardware.

STEP 7

Repeat **Steps 1-6** for the other side Running Board installation. The installation is completed, (**Fig 5**).



(Fig 5) Installation Completed

Attention

Do periodic inspections to the installation to make sure that all hardware is secure and tight.

In order to protect your bars/boards, please use only mild soap/non-abrasive products for cleaning.