

iBoard®

iBoard® by APS

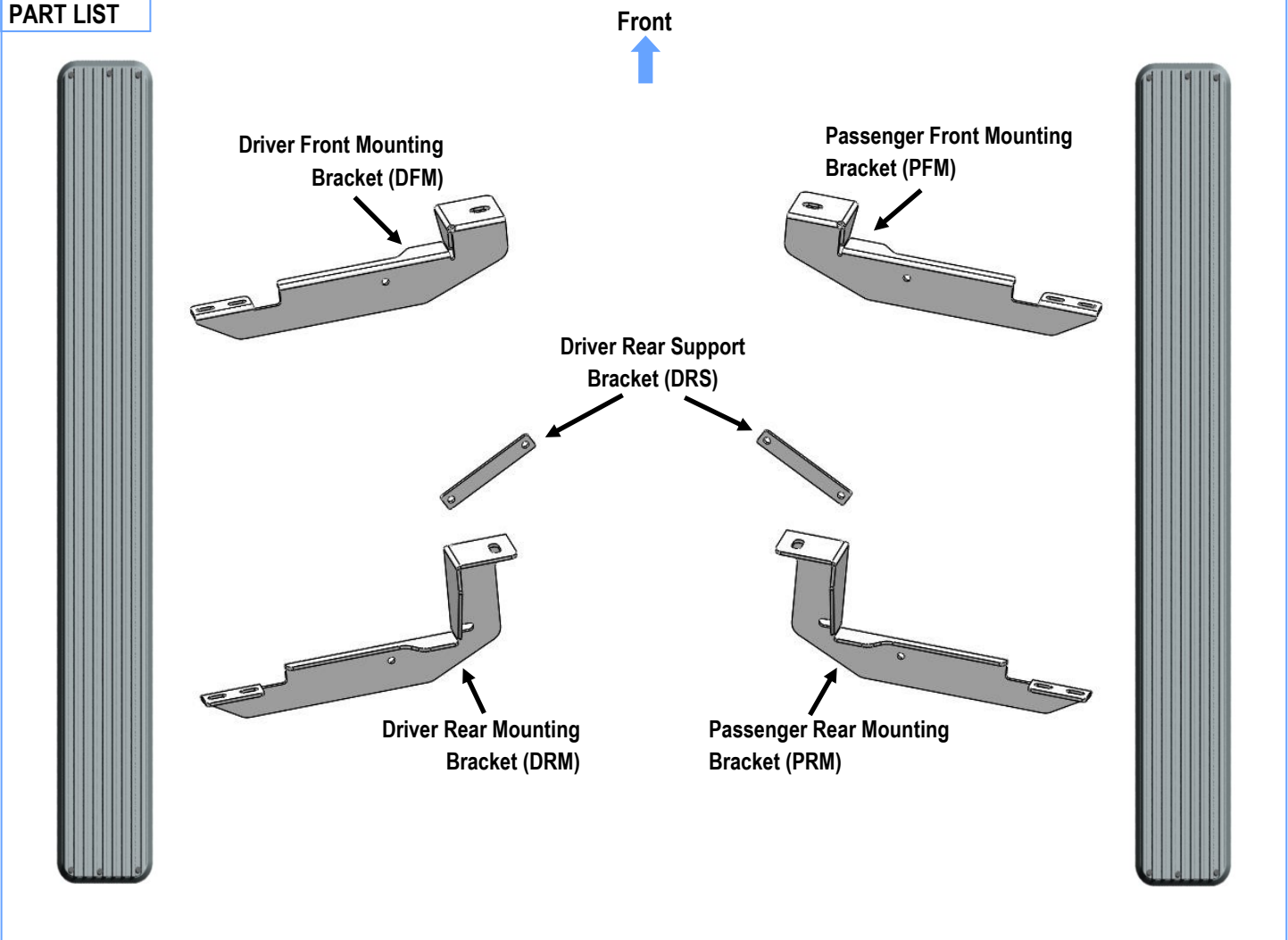
PART#: IB-045

READ INSTRUCTIONS CAREFULLY BEFORE STARTING INSTALLATION. REMOVE CONTENTS FROM BOX AND VERIFY ALL PARTS ARE PRESENT. ASSISTANCE IS RECOMMENDED.

*BODY FRAME MOUNT
*DRILLING IS REQUIRED

Fastener Size	Tightening Torque (ft-lbs)	Required
6mm	6-7	√
8mm	16-18	√
10mm	31-32	X
12mm	56-58	√
14mm	92-94	X

PART LIST



Customer Support: info@iboardauto.com

iBoard®

Hardware Package A (For Bracket Installation)



X4

M12X1.75-110mm Hex Bolt



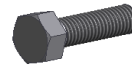
X4

M12 Flat Washer



X4

M12 Lock Washer



X4

M8X1.25-25mm Hex Bolt



X8

M8 Large Flat Washer



X4

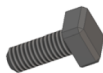
M8 Lock Washer



X4

M8 Hex Nut

Hardware Package B (For Aluminum Step Bar Installation Only, Not Supply to Stainless Steel Step Bar)



X8

M6X1-20mm Square Head Bolt



X8

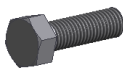
M6 Large Flat Washer



X8

M6 Nylon Lock Nut

Hardware Package C (For Stainless Steel Step Bar Installation Only, Not Supply to Aluminum Step Bar)



X8

M6X1-20mm Hex Bolt



X8

M6 Lock Washer



X8

M6 Flat Washer

STEP 1

Start installation from the driver side front of the vehicle. Remove the front body mount bolt from body mount.

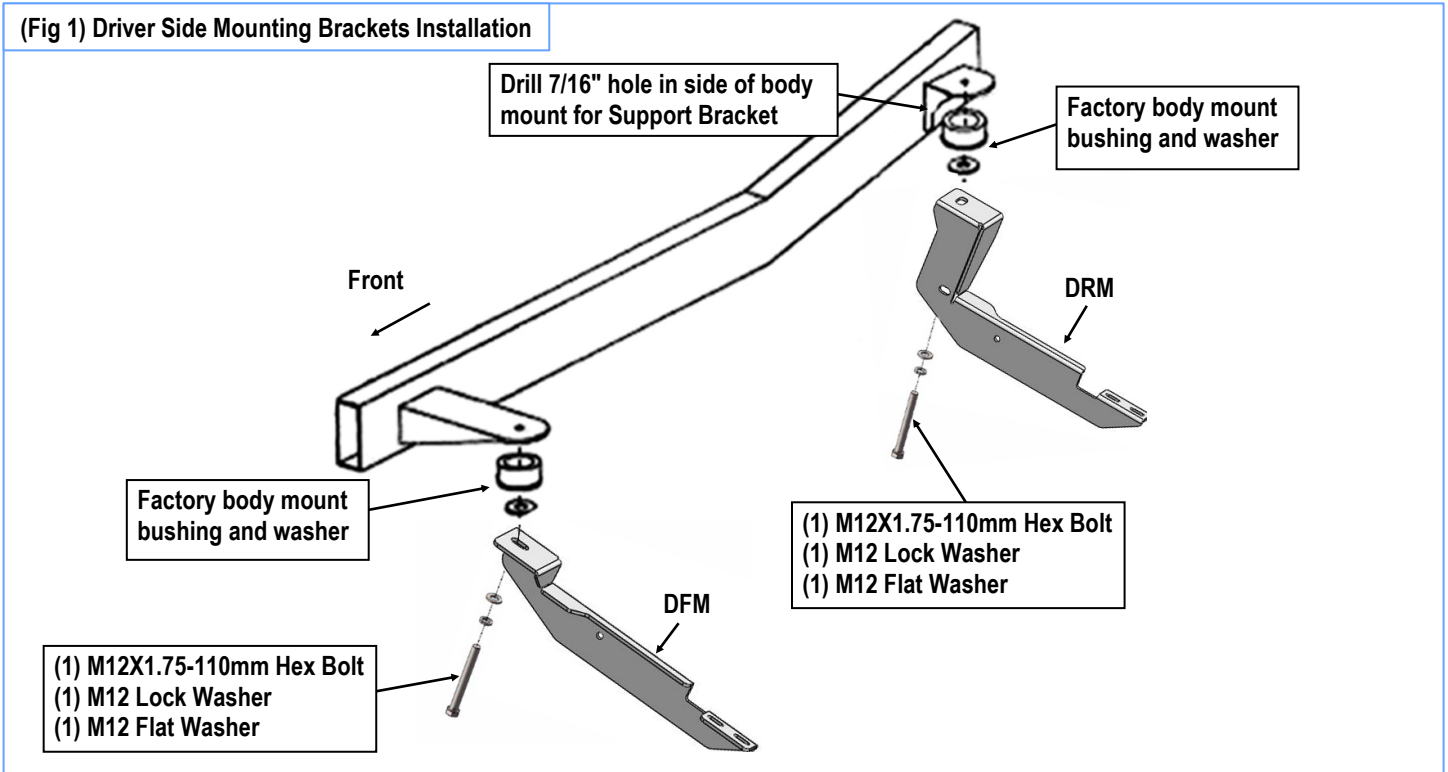
Select the Driver Front Mounting Bracket (**DFM**). Bolt the mounting bracket to the vehicle with (1) M12X1.75-110mm Hex Bolt, (1) M12 Lock Washer, and (1) M12 Flat Washer, (**Fig 1**). Do not fully tighten hardware at this time.

STEP 2

Move to driver side rear of the vehicle. Repeat **Step 1** for Driver Rear Mounting Bracket (**DRM**) installation, (**Fig 1**). Do not fully tighten hardware at this time.

iBoard®

(Fig 1) Driver Side Mounting Brackets Installation



STEP 3

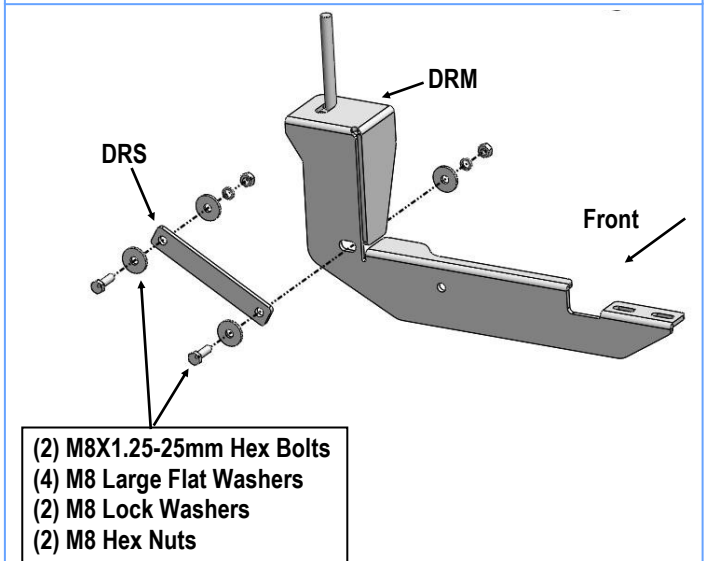
Select the Driver Rear Support Bracket (**DRS**). Attach the Support Bracket to the front side of the Driver Rear Mounting Bracket using the included (1) M8X1.25-25mm Hex Bolt, (1) M8 Lock Washer, (2) M8 Large Flat Washers and (1) M8 Hex Nut, (**Fig 2**). Do not fully tighten hardware at this time.

STEP 4

Line up the opposite end of the Support Bracket with the gusset on the steel body mount housing. Using the remaining hole in the Support Bracket as a template, mark and carefully drill a 7/16" hole through the side of the body mount bracket., (**Fig 1**).

IMPORTANT! Any cutting or drilling tool may break or shatter. Government regulations require safety glasses & equipment at all times when cutting or drilling.

Attach the Support Bracket to the drilled hole with (1) M8X1.25-25mm Hex Bolt, (1) M8 Lock Washer, (2) M8 Large Flat Washers and (1) M8 Hex Nut, (**Fig 2**). Do not fully tighten hardware at this time.



(Fig 2) Driver Rear Support Bracket (DRS) Installation

iBoard®

STEP 5

Once all (2) mounting brackets are installed, then proceed to the Step Bar installation. According to the style of Step Bar proceed to the correct installation STEPS.

Note: Aluminum Step Bar refer to STEP 6; Stainless Steel Step Bar skip to STEP 7.

STEP 6

Aluminum Step Bar Installation:

Select a **Aluminum Step Bar**. Slip (2) M6x1-20mm Square Head Bolts into each bottom channel (**Fig 3**). Carefully position the Step Bar onto the (2) Mounting Brackets.

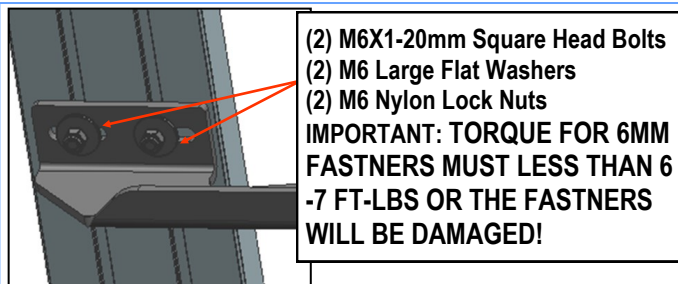
IMPORTANT: Do not slide the Step Bar on the Brackets or the bottom surface of the board will be damaged. Attach the Step Bar to each Mounting Brackets with (2) M6x1-20mm Square Head Bolts, (2) M6 Large Flat Washers and (2) M6 Nylon Lock Nuts, (**Fig 4**). Do not fully tighten at this time.

Level and adjust the Step Bar and fully tighten all hardware.

Repeat **Steps 1-6** for the other side Step Bar installation. **The installation is completed!!!**



(Fig 3) Slip M6X1-20mm Square Head Bolts Into The Bottom Channels

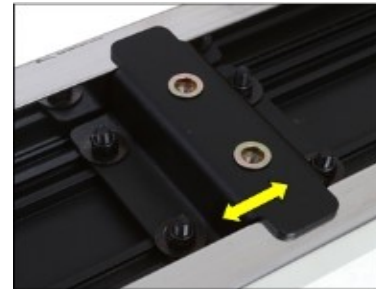


(Fig 4) Running Board Installed Onto Mounting Bracket

STEP 7

Stainless Steel Step Bar Installation:

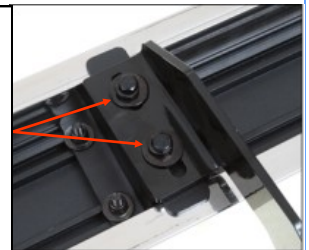
Select a **Stainless Steel Step Bar** (with the U-Sliders installed on the Bar). Loose the U-Sliders, reposition the U-Sliders onto the board according to the (2) Installed Mounting Brackets location, (**Fig 5**). Re-secure the U-Sliders on the Step Bar. Attach the Step Bar to the installed Mounting Brackets with (4) M6X1-20mm Hex Bolts, (4) M6 Large Flat Washers & (4) M6 Lock Washers, (**Fig 6**). Do not fully tighten hardware at this time. Level and adjust the Step Bar and fully tighten all hardware. Repeat **Steps 1-5 and 7** for the other side Step Bar installation. **The installation is completed!!!**



(Fig 5) Slide & line up the U-Slider with the installed mounting brackets along bottom channel

- (2) M6X1-20mm Hex Bolts
- (2) M6 Large Flat Washers
- (2) M6 Lock Washers

IMPORTANT: TORQUE FOR 6MM FASTNERS MUST LESS THAN 6-7 FT-LBS OR THE FASTNERS WILL BE DAMAGED!



(Fig 6) Step Bar Installed on Bracket Installed

Attention

Do periodic inspections to the installation to make sure that all hardware is secure and tight.

In order to protect your bars/boards, please use only mild soap/non-abrasive products for cleaning.