

iBoard®

iBoard® by APS

PART#: IB-089A-B

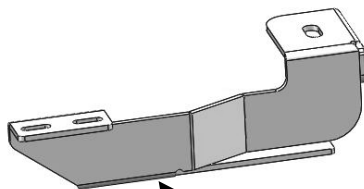
READ INSTRUCTIONS CAREFULLY BEFORE STARTING INSTALLATION. REMOVE CONTENTS FROM BOX AND VERIFY ALL PARTS ARE PRESENT. ASSISTANCE IS RECOMMENDED.

*BODY FRAME MOUNT
*NO DRILLING REQUIRED

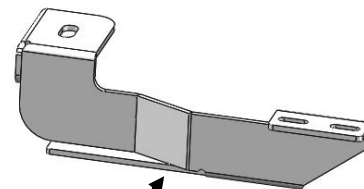
Fastener Size	Tightening Torque (ft-lbs)
6mm	6-7
8mm	16-18
10mm	31-32
12mm	56-58
14mm	92-94

PART LIST

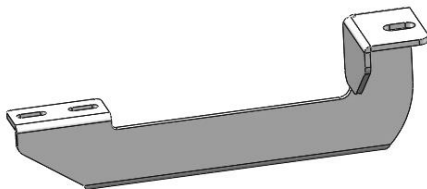
Front



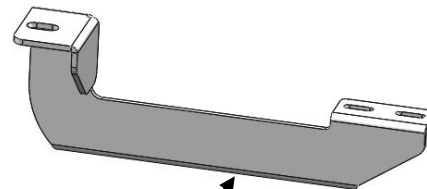
Driver Front Mounting Bracket (DFM)



Passenger Front Mounting Bracket (PFM)



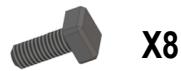
Driver Rear Mounting Bracket (DRM)



Passenger Rear Mounting Bracket (PRM)

Customer Support: info@iboardauto.com

iBoard®



X8

M6X1-20mm
Square Head Bolt



X8

M6 Large Flat
Washer

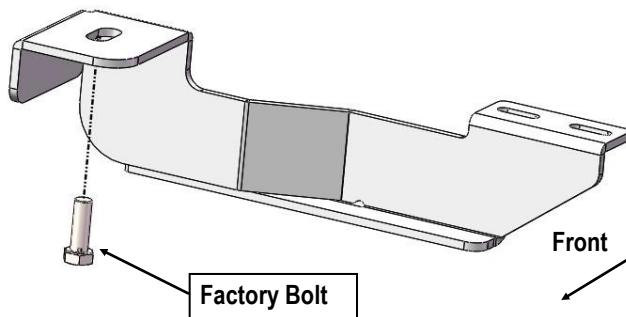


X8

M6X1 Nylon
Lock Nut

STEP 1

Start installation from the driver side front of the vehicle. Select (1) Driver Front Mounting Bracket (**DFM**), locate the Driver Front Mounting Bracket with the factory bolt, (**Fig 1**).



(Fig 1) Driver Front Mounting Bracket Installation

STEP 2

Move to rear mounting location. Repeat **Step 1** for the Driver Rear Mounting Bracket (**DRM**) installation.

STEP 3

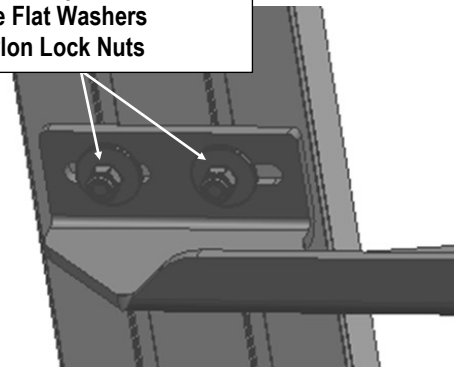
Select a Running Board. Slip (4) M6X1-20mm Square Head Bolts into each bottom channel (**Fig 2**). Carefully position the Running Board onto the (2) Mounting Brackets.

IMPORTANT: Do not slide the Running Board on the Brackets or the bottom surface of the board will be damaged. Attach the Running Board to each Mounting Bracket with (4) M6x1-20mm Square Head Bolts, (4) M6 Large Flat Washers and (4) M6 X1 Nylon Lock Nuts (**Fig 3**). Do not fully tighten at this time.



(Fig 2) Slip M6X1-20mm Square Head Bolts Into The Bottom Channels

(2) M6X1-20mm Square Head Bolts
(2) M6 Large Flat Washers
(2) M6X1 Nylon Lock Nuts



(Fig 3) Running Board Installed Onto the Mounting Bracket

iBoard®

STEP 4

Level and adjust the Running Board and fully tighten all hardware.

STEP 5

Repeat **Steps 1-4** for other side Running Board installation. The installation is completed.

Attention

Do periodic inspections to the installation to make sure that all hardware is secure and tight.

In order to protect your bars/boards, please use only mild soap/non-abrasive products for cleaning.