

iBoard®

iBoard® by APS

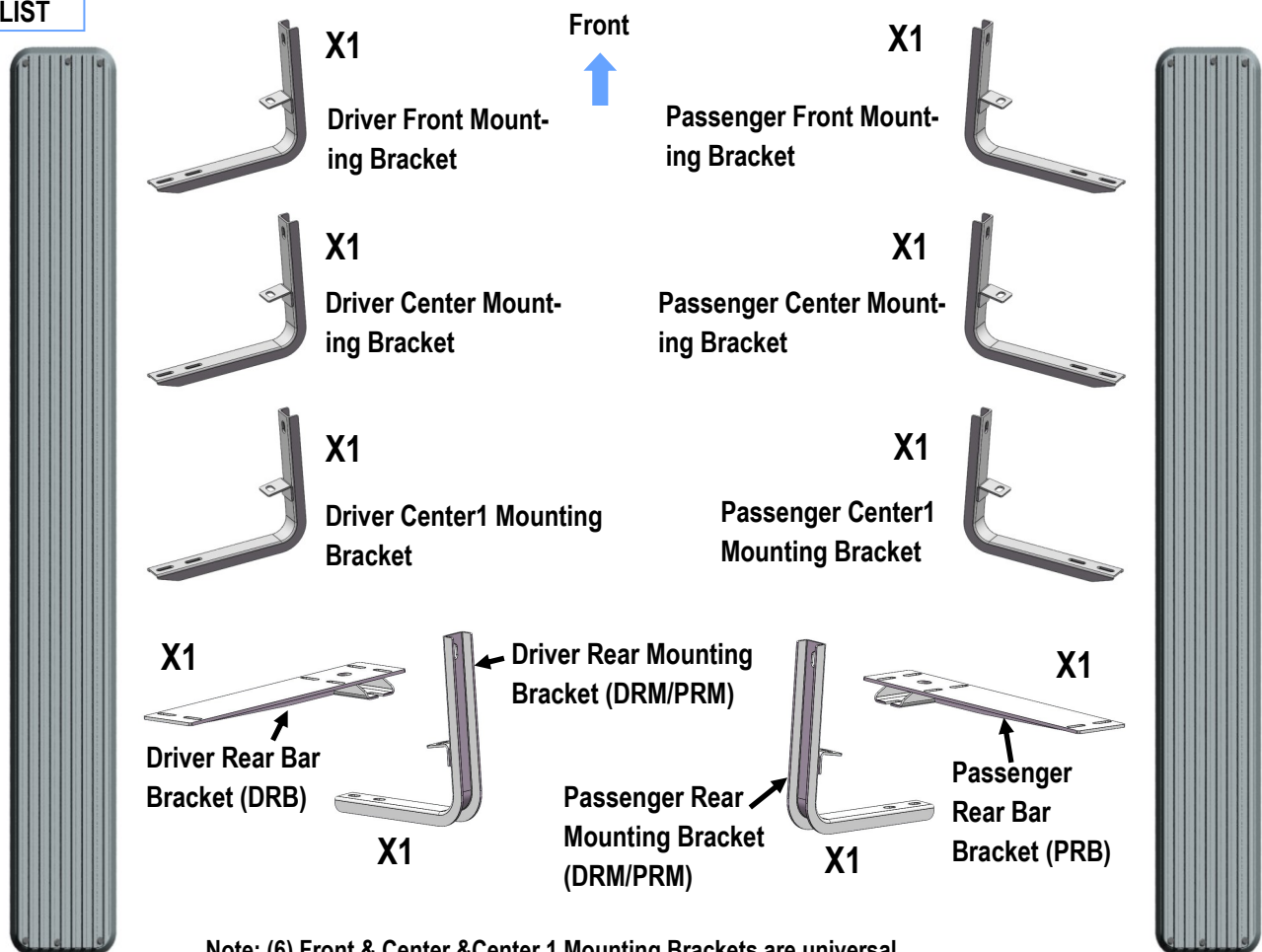
PART#: IB-171[S,L]-A_B

READ INSTRUCTIONS CAREFULLY BEFORE STARTING INSTALLATION. REMOVE CONTENTS FROM BOX AND VERIFY ALL PARTS ARE PRESENT. ASSISTANCE IS RECOMMENDED.

*ROCKER PANEL MOUNT
*No DRILLING REQUIRED

Fastener Size	Tightening Torque (ft-lbs)
6mm	6-7
8mm	16-18
10mm	31-32
12mm	56-58
14mm	92-94

PART LIST



Note: (6) Front & Center & Center 1 Mounting Brackets are universal.

(2) Driver Rear Mounting Bracket and Passenger Rear Mounting Bracket are universal.

Customer Support: info@iboardauto.com

iBoard®



X16

M8X1.25-30mm
Hex Bolt



X20

M8 Large Flat Washer



X16

M8 Lock Washer



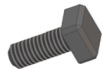
X4

M8X1.25-20mm
Inner Hex Bolt



X4

M8X1.25 Nylon
Lock Nut



X24

M6X1-20mm
Square Head Bolt



X24

M6 Large Flat
Washer

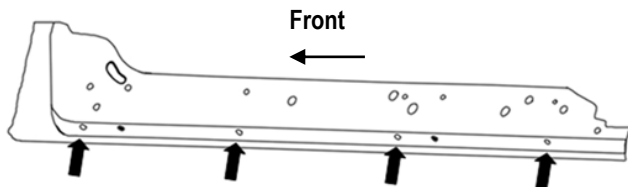


X24

M6X1 Nylon
Lock Nut

STEP 1

Start the installation under the passenger side of the vehicle. Locate the 6 plugs along the bottom edge of the body. Mounting Brackets will bolt to the 1st, 3rd, 4th and 6th threaded mounting holes, (**Fig 1**). Remove the plastic plugs from each mounting location. Directly above each threaded insert is a top mounting location on the side of the body panel. Hold a Bracket up in place to help determine the mounting holes to use along the body. **NOTE:** Thread an 8mm Hex Bolt into the threaded inserts to clear paint as required.

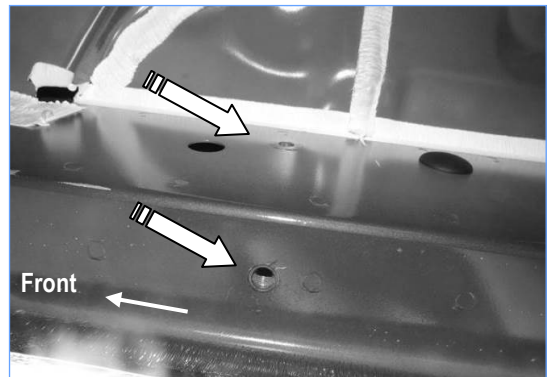


(Fig 1) Passenger Side Mounting Location

STEP 2

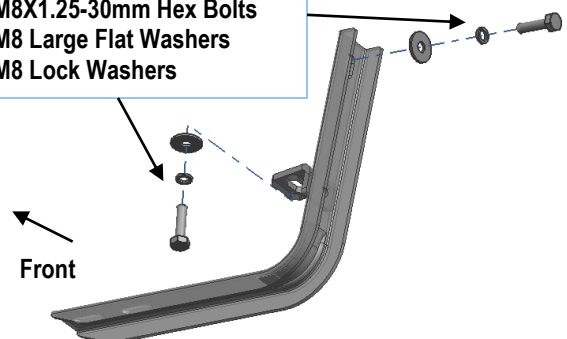
Start from the Passenger side Front Mounting location, (**Fig 2**). Bolt the Passenger Front Mounting Bracket to the factory

threaded holes with (2) M8X1.25-30mm Hex Bolts, (2) M8 Large Flat Washers and (2) M8 Lock Washers (**Fig 3**).



(Fig 2) Passenger Side Front Mounting Location

(2) M8X1.25-30mm Hex Bolts
(2) M8 Large Flat Washers
(2) M8 Lock Washers



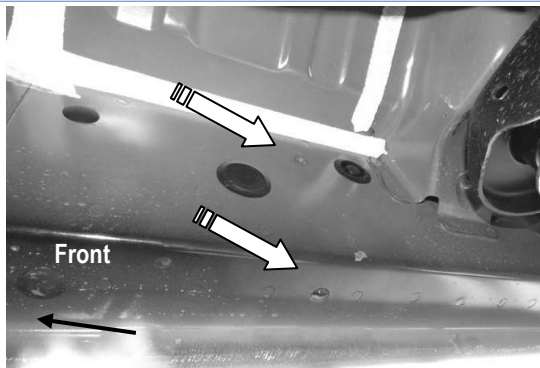
(Fig 3) Passenger Front Mounting Bracket Installed

iBoard®

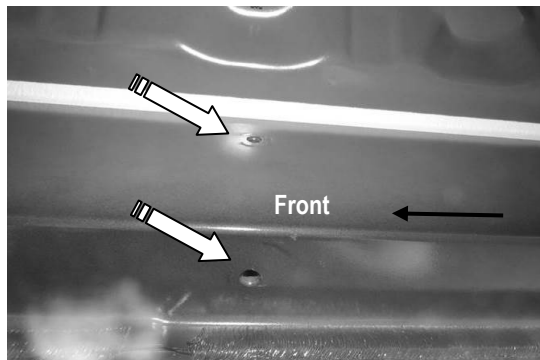
STEP 3

Move to Passenger 2nd & 3rd Mounting locations, (**Fig 4-5**). Repeat **Steps 1-2** to install the Passenger Center Mounting Bracket and Passenger Center 1 Mounting Bracket.

Note: Passenger Front Mounting Bracket, Passenger Center Mounting Bracket and Passenger Center 1 Mounting Bracket are universal.



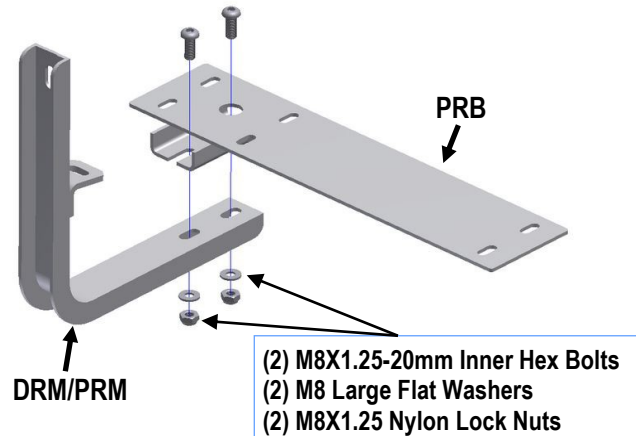
(Fig 4) Passenger 2nd Mounting Location



(Fig 5) Passenger 3rd Mounting Location

STEP 4

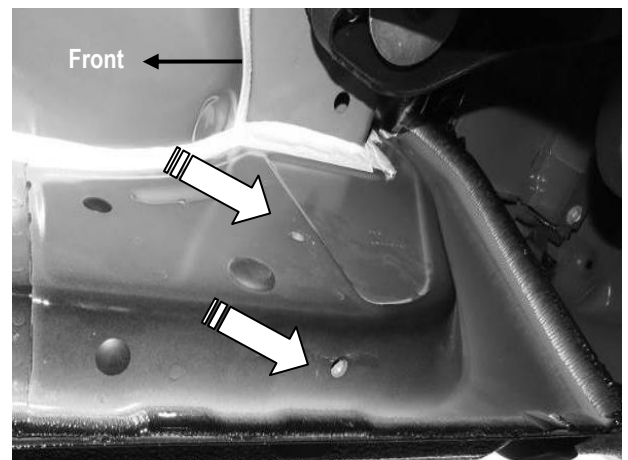
Assemble the Passenger Rear Bar Bracket (**PRB**) and the Passenger Rear Mounting Bracket (**PRM**) with (2) M8X1.25-20mm Inner Hex Bolts, (2) M8 Large Flat Washers, (2) M8X1.25 Nylon Lock Nuts. (**Fig 6**)



(Fig 6) Passenger Rear Bar Bracket (PRB) and Passenger Rear Mounting Bracket (PRM) Assembly

STEP 5

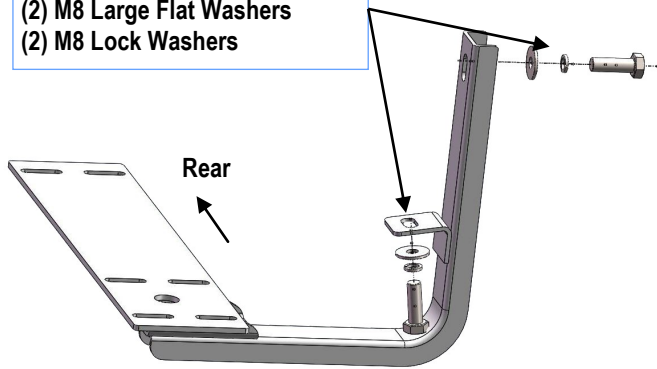
Move to Passenger side Rear Mounting location, (**Fig 7**). Install the Assembled Passenger Rear Mounting Bracket (**PRM**) with (2) M8X1.25-30mm Hex Bolts, (2) M8 Large Flat Washers and (2) M8 Lock Washers (**Fig 8**).



(Fig 7) Passenger Side Rear Mounting Location

iBoard®

- (2) M8X1.25-30mm Hex Bolts
- (2) M8 Large Flat Washers
- (2) M8 Lock Washers



(Fig 8) Passenger Rear Mounting Bracket Installed

STEP 6

Select a Running Board. Slip (6) M6X1-20mm Square Head Bolts into each bottom channel (Fig 9). Carefully position the Running Board onto the (4) Mounting Brackets. **IMPORTANT:** Do not slide (front to back) the Running Board on the Brackets or the bottom surface of the running board might be damaged.

Attach the Running Board to Front & Center & Center 1 Mounting Brackets with (2) M6X1-20mm Square Head Bolts, (2) M6 Large Flat Washers and (2) M6X1 Nylon Lock Nuts (Fig 10).

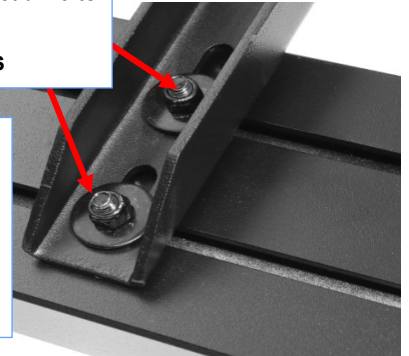
Attach the Running Board to Rear Bar Bracket with (6) M6X1-20mm Square Head Bolts, (6) M6 Large Flat Washers and (6) M6X1 Nylon Lock Nuts (Fig 11). Do not tighten at this time.



(Fig 9) Slip M6X1-20mm Square Head Bolts into the bottom channel

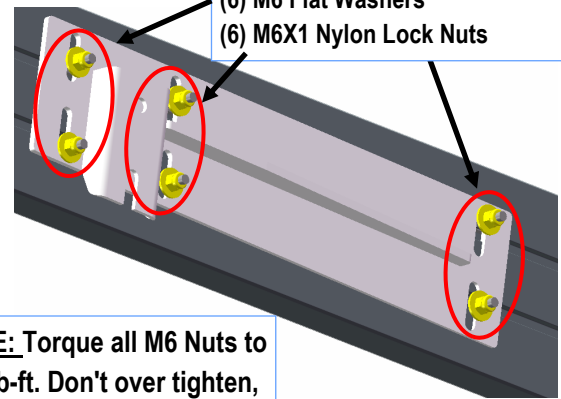
- (2) M6X1-20mm Square Head Bolts
- (2) M6 Flat Washers
- (2) M6X1 Nylon Lock Nuts

NOTE: Torque all M6 Nuts to 6~7 lb-ft. Don't over tighten, or the thread form of the nuts will be damaged.



(Fig 10) Running Board Installed onto Front & Center & Center 1 Mounting Brackets

- (6) M6X1-20mm Square Head Bolts
- (6) M6 Flat Washers
- (6) M6X1 Nylon Lock Nuts



NOTE: Torque all M6 Nuts to 6~7 lb-ft. Don't over tighten, or the thread form of the nuts will be damaged.

(Fig 11) Running Board Installed onto Rear Bar Bracket

STEP 7

Level and adjust the Running Board as necessary and fully tighten all hardware.

STEP 8

Repeat **Steps 1-7** for the driver side Running Board installation. The installation is completed (Fig 12).

iBoard®



(Fig 12) Installation Completed

Attention

Do periodic inspections to the installation to make sure that all hardware is secure and tight.

In order to protect your bars/boards, please use only mild soap/non-abrasive products for cleaning.