



iBoard® by APS

PART#: IB-014C&H

READ INSTRUCTIONS CAREFULLY BEFORE
STARTING INSTALLATION. REMOVE CONTENTS
FROM BOX AND VERIFY ALL PARTS ARE PRE-
SENT. ASSISTANCE IS RECOMMENDED.

*BODY FRAME MOUNT
*DRILLING IS REQUIRED

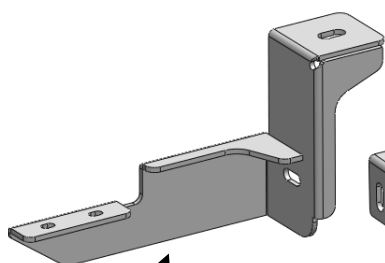
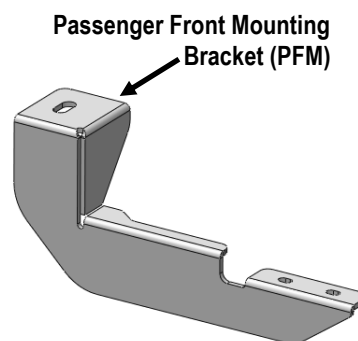
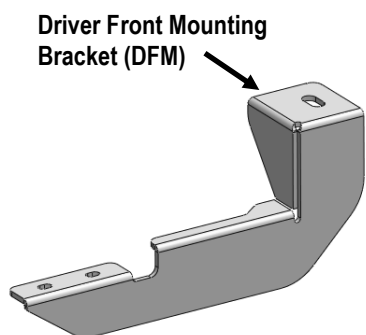
| Fastener Size | Tightening Torque (ft-lbs) | Required |
|---------------|----------------------------|----------|
| 6mm | 6-7 | X |
| 8mm | 16-18 | √ |
| 10mm | 31-32 | √ |
| 12mm | 56-58 | √ |
| 14mm | 92-94 | X |

PART LIST

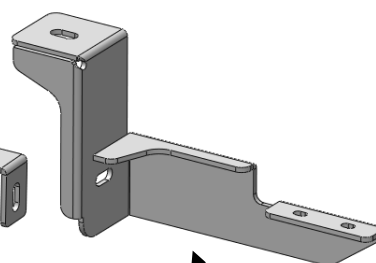
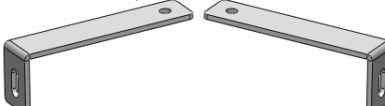
Driver Side Step Bar

Front
↑

Passenger Side Step Bar



Driver/Passenger Rear
Support Bracket (DRS/
PRS)





Hardware Package A (For Bracket Installation)

| Item | QTY | Description | Item | QTY | Description |
|------|-----|--------------------------|------|-----|------------------------|
| 1# | 4 | M12X1.75-120mm Hex Bolts | 5# | 8 | M10 Large Flat Washers |
| 2# | 4 | M12 Large Flat Washers | 6# | 4 | M10 Lock Washers |
| 3# | 4 | M12 Lock Washers | 7# | 4 | M10 Hex Nuts |
| 4# | 4 | M10X1.5-35mm Hex Bolts | | | |



1 #



2 #



3 #



4#



5#



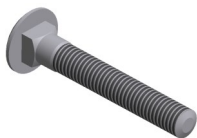
6#



7 #

Hardware Package B (For Stainless Steel Step Bar Installation)

| Item | QTY | Description | Item | QTY | Description |
|------|-----|-----------------------------|------|-----|---------------------------------|
| 1# | 8 | M8X1.25-35mm Carriage Bolts | 3# | 8 | M8 Nylon Lock Nuts |
| 2# | 8 | M8 Large Flat Washers | 4# | 4 | Sliders (Packed with Step Bars) |



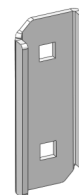
1 #



2 #



3 #



4 #

IMPORTANT ALERT: GM uses a very strong thread-locking compound on all body bolts. Use of an air assisted impact ratchet can cause damage to the threads on factory body mount bolts and the internal nut assembly because of this thread locking compound. We only recommend the use of hand tools to slowly remove and reinstall body mount bolts on all GM vehicles.

CRITICAL INFORMATION: If during the removal process, it becomes increasingly difficult to unscrew the body mount bolt with hand tools, tighten the bolt several rotations to clear the thread locking compound from the threads, then reverse direction and continue to unscrew until the body mount bolt is out. Repeat this process as necessary on all GM body mount bolts. Use of an appropriate anti-seize compound is highly recommended for re-installation. Tighten body mount bolt to factory torque specifications for your particular model year.



STEP 1

Start installation from the driver side front of the vehicle. Remove the factory body mount bolt.

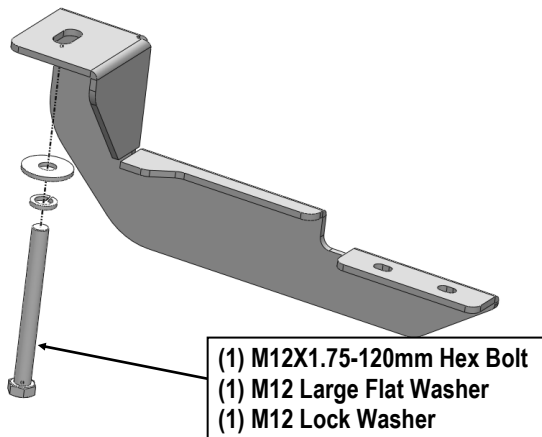


(Fig 1) Example Of Gm Factory Body Mount Bolt

STEP 2

Attach the Driver Front Mounting Bracket (DFM) to the front body mount with (1) M12X1.75-120mm Hex Bolt, (1) M12 Lock Washer and (1) M12 Large Flat Washer, (Fig 2). Do not fully tighten hardware at this time.

IMPORTANT! To prevent unnecessary noise, adjust the position of all Mounting Brackets, make sure the Mounting Brackets no contact with the factory steel body mount bracket or emergency brake cables.

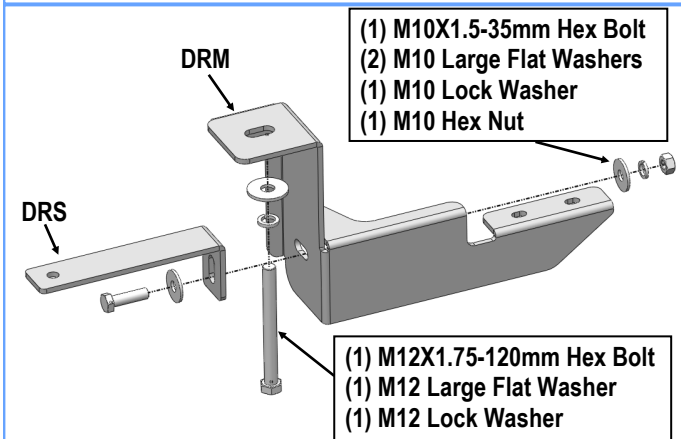


(Fig 2) Driver Front Mounting Bracket Installation

STEP 3

Move to the rear mounting location. Repeat **Step 2** for the Driver Rear Mounting Bracket installation, (Fig 3). Do not fully tighten hardware at this time.

Select (1) Driver Rear Support Bracket (DRS/PRS). Attach the short end of the Support Bracket to the back of the Driver Rear Mounting Bracket with (1) M10X1.5-35mm Hex Bolt, (2) M10 Large Flat Washers, (1) M10 Lock Washer and (1) M10 Hex Nut, (Fig 3). Do not fully tighten hardware at this time.



(Fig 3) Driver Rear Bracket Installation

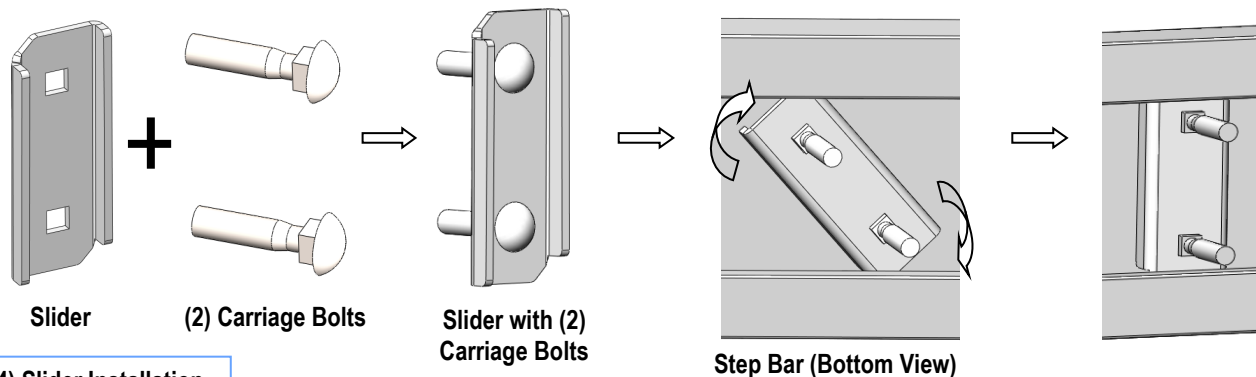
STEP 4

Once all (2) Driver side mounting brackets are installed, then proceed to the Step Bar installation. (Figs 4&5)

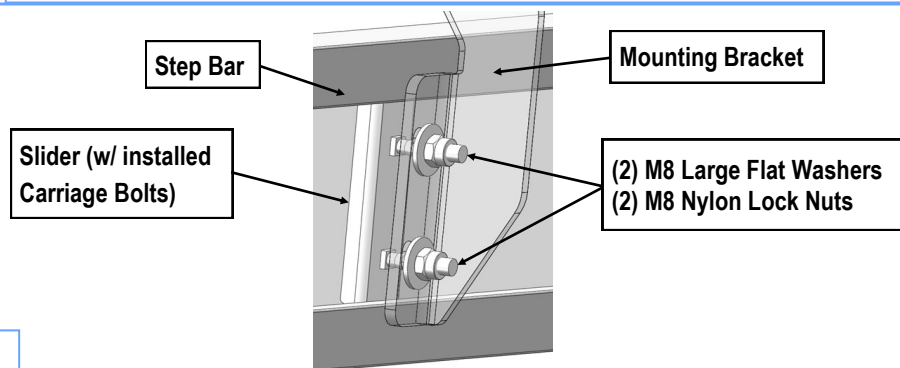
- (1) Select (1) Slider and (2) M8X1.25-35mm Carriage Bolts;
- (2) Install (2) M8X1.25-35mm Carriage Bolts in (1) Slider.
- (3) Slide the Slider (with carriage bolts) to the **Step Bar**.
- (4) Repeat to install the other (1) slider to the step bar.
- (5) Attach the Step Bar (with the Sliders) onto the installed mounting brackets. Position the Sliders to the installed brackets. Secure the Step Bar to the installed Brackets by using (4) M8 Large Flat Washers and (4) M8 Nylon Lock Nuts and (2) Sliders, (Fig 5). Do not fully tighten hardware at this time.

Note: The Sliders are packed with the Step Bars.

Level and adjust the Step Bar and fully tighten all hardware.



(Fig 4) Slider Installation

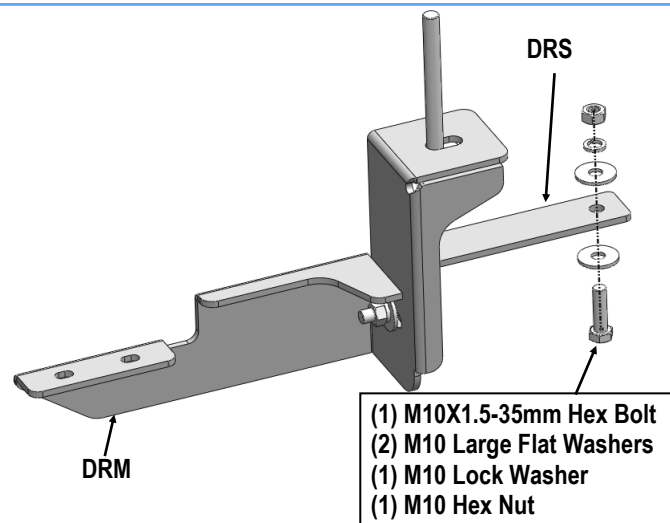


(Fig 5) Step Bar Installation

STEP 5

Using the hole in the long end of the Support Bracket as a guide, drill a 7/16" hole in the bottom of the frame. Do not drill close to the edge of the frame. **IMPORTANT!** Any cutting or drilling tool may break or shatter. Government regulations require safety glasses & equipment at all times when cutting or drilling.

Then, attach the Driver Rear Support Bracket (**DRS/PRS**) to the frame with (1) M10X1.5-35mm Hex Bolt, (2) M10 Large Flat Washers, (1) M10 Lock Washer and (1) M10 Hex Nut, (**Fig 6**). Do not fully tighten hardware at this time.



(Fig 6) Driver Rear Support Bracket Installation

STEP 6

Level and adjust the Step Bar and fully tighten all hardware. Repeat **Steps 1-6** for other side Step Bar installation. **The installation is completed!!!**

Attention

Do periodic inspections to the installation to make sure that all hardware is secure and tight.
In order to protect your bars/boards, please use mild soap/non-abrasive products for cleaning only.