

iBoard®



Scan for
Installation Video

iBoard® by APS

PART#: IB-069C&H

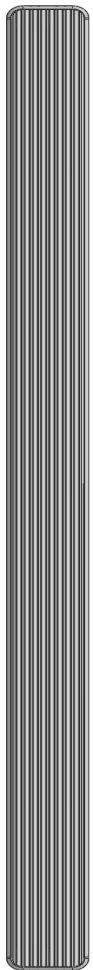
READ INSTRUCTIONS CAREFULLY BEFORE STARTING INSTALLATION. REMOVE CONTENTS FROM BOX AND VERIFY ALL PARTS ARE PRESENT. ASSISTANCE IS RECOMMENDED.

*BODY FRAME MOUNT
*NO DRILLING REQUIRED

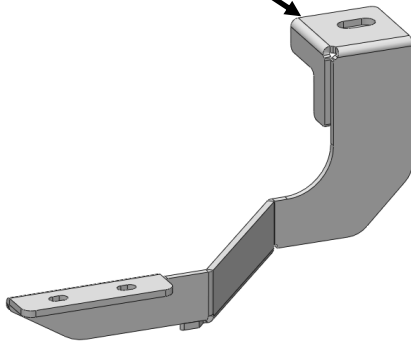
Fastener Size	Tightening Torque (ft-lbs)	Required
6mm	6-7	X
8mm	16-18	√
10mm	31-32	√
12mm	56-58	√
14mm	92-94	X

PART LIST

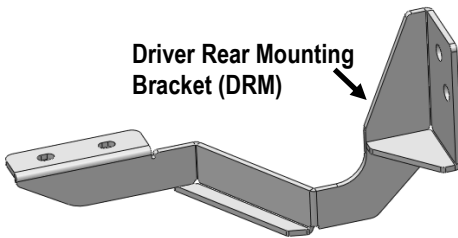
Driver Side Step Bar



Driver Front Mounting Bracket (DFM)



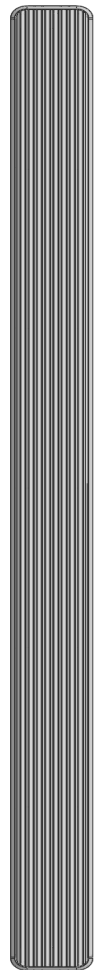
Driver Rear Mounting Bracket (DRM)



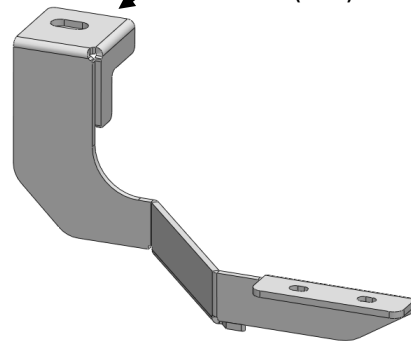
Front



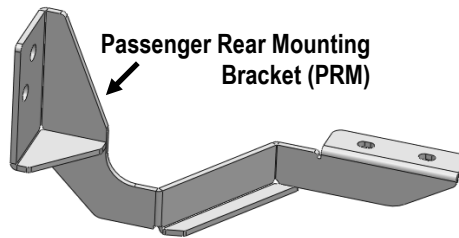
Passenger Side Step Bar



Passenger Front Mounting Bracket (PFM)



Passenger Rear Mounting Bracket (PRM)



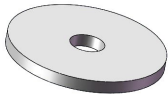
Note: *Driver Front / Passenger Rear Bar Brackets are universal
*Passenger Front / Driver Rear Bar Brackets are universal

Customer Support: info@iboardauto.com




Hardware Package A (For Bracket Installation)


Item	QTY	Description	Item	QTY	Description
1#	2	Spacer Washers	3#	2	M12 Large Flat Washers
2#	2	M12X1.75-120mm Hex Bolts	4#	2	M12 Lock Washers




1#



2#



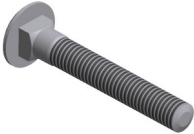
3#




4#

Hardware Package B (For Stainless Steel Step Bar Installation)


Item	QTY	Description	Item	QTY	Description
1#	8	M8X1.25-35mm Carriage Bolts	3#	8	M8 Nylon Lock Nuts
2#	8	M8 Large Flat Washers	4#	4	Sliders (Packed with Step Bars)



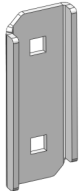
1 #



2 #



3 #

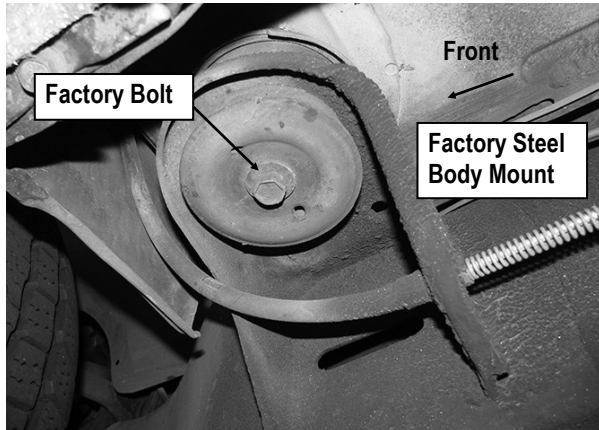


4 #



STEP 1

Start installation from the driver side front of the vehicle, temporarily remove the front body mount bolt, steel washer (if equipped), and rubber bushing, (**Fig 1**). **Note:** Do not discard hardware.



(Fig 1) Driver Side Front Mounting Location

STEP 2

Select Driver Front Mounting Bracket (**DFM**). Install Driver Front Mounting Bracket with (1) factory bolt, (1) factory steel washer, (if equipped), and (1) rubber bushing. Bolt the Mounting Bracket up in position against the body mount but do not tighten at this time.

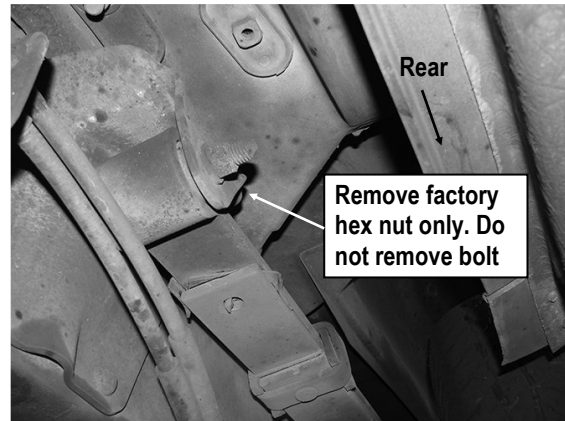
NOTE: On some model/years, the factory body mount bolt may not be long enough to go through the Front Mounting Bracket and up into the body mount. Replace the factory bolt with the included (1) M12X1.75-120mm Hex Bolt, (1) M12 Lock Washer and (1) M12 Flat Washer. Do not fully tighten hardware at this time.

IMPORTANT: To prevent unnecessary noise, adjust the position of the Front Mounting Bracket so that the Brackets do not come in contact with the steel body mount bracket. If necessary, the Driver Front Mounting Bracket can be swapped driver side to passenger side to clear the gusset on the Bracket.

STEP 3

Move toward the driver side rear of the vehicle. Remove the factory Hex Nut from the leaf spring bolt, (**Fig 2**).

IMPORTANT: Do not remove the hex bolt, only remove the outer nut.



(Fig 2) Driver Side Rear Mounting Location

STEP 4

Slide (1) Spacer Washer over the Hex Bolt, (**Fig 3**). Slide the assembled Driver Rear Mounting Bracket over the end of the hex bolt and up against the Spacer Washer. Reuse the factory hex nut to attach the Bracket to the hex bolt, (**Fig 4**). Do not fully tighten hardware at this time.

NOTE: Use the **top** mounting hole in the Bracket for **2WD** models and use the **2nd or lower** hole for **4WD** models.

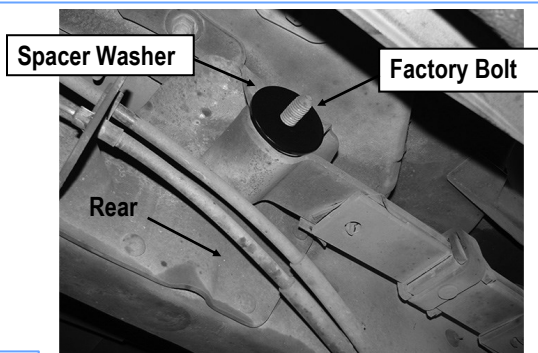
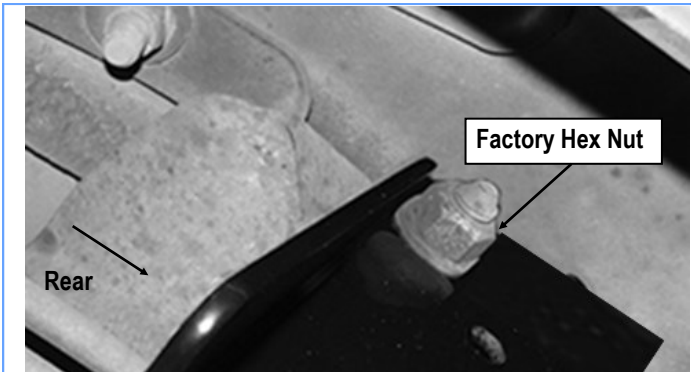


Fig 3



(Fig 4) Driver Side Rear Mounting Installation

- (3) Slide the Slider (with carriage bolts) to the **Step Bar**.
- (4) Repeat to install the other (1) slider to the step bar.
- (5) Attach the Step Bar (with the Sliders) onto the installed mounting brackets. Position the Sliders to the installed brackets. Secure the Step Bar to the installed Brackets by using (4) M8 Large Flat Washers and (4) M8 Nylon Lock Nuts and (2) Sliders, (Fig 6). Do not fully tighten hardware at this time.

Note: The Sliders are packed with the Step Bars.

Level and adjust the Step Bar and fully tighten all hardware. Repeat **Steps 1-5** for the other side Step Bar installation. **The installation is completed!!!**

STEP 5

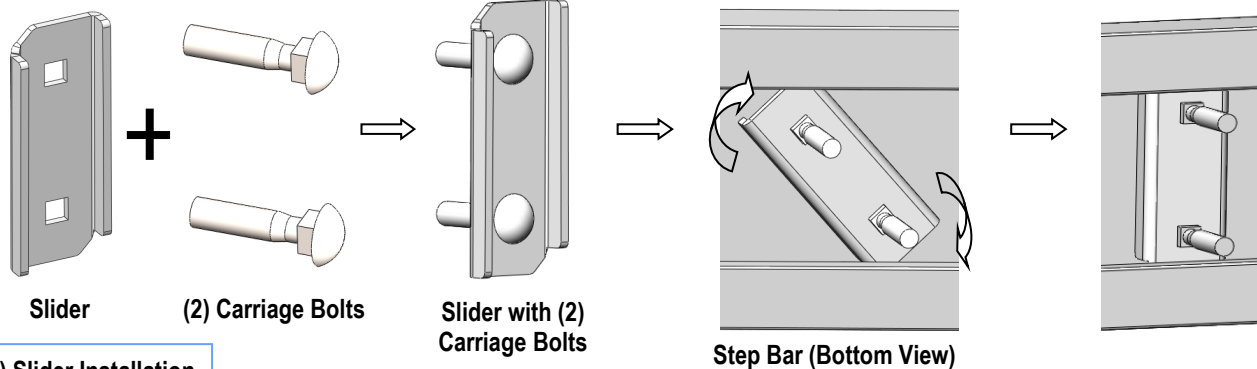
Once all (2) Driver side mounting brackets are installed, then proceed to the Step Bar installation. (Figs 5 & 6)

- (1) Select (1) Slider and (2) M8X1.25-35mm Carriage Bolts;
- (2) Install (2) M8X1.25-35mm Carriage Bolts in (1) Slider.

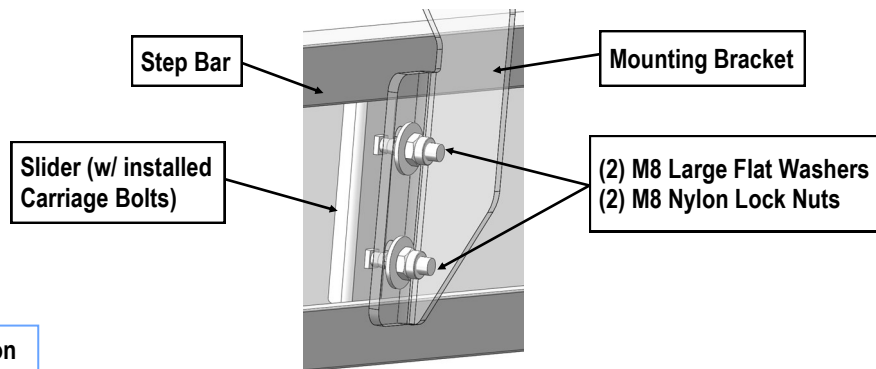
Attention

Do periodic inspections to the installation to make sure that all hardware is secure and tight.

In order to protect your bars/boards, please use only mild soap/non-abrasive products for cleaning.



(Fig 5) Slider Installation



(Fig 6) Step Bar Installation