

iBoard®



Scan for
Installation Video

iBoard® by APS

PART#: IB-021C&H

READ INSTRUCTIONS CAREFULLY BEFORE STARTING INSTALLATION. REMOVE CONTENTS FROM BOX AND VERIFY ALL PARTS ARE PRESENT. ASSISTANCE IS RECOMMENDED.

*ROCKER PANEL MOUNT
*NO DRILLING REQUIRED

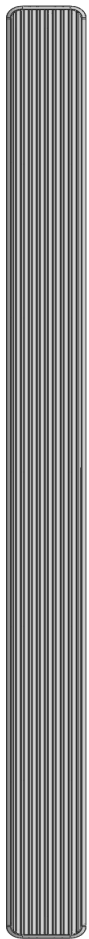
Fastener Size	Tightening Torque (ft-lbs)	Required
6mm	6-7	X
8mm	16-18	√
10mm	31-32	X
12mm	56-58	X
14mm	92-94	X

PART LIST

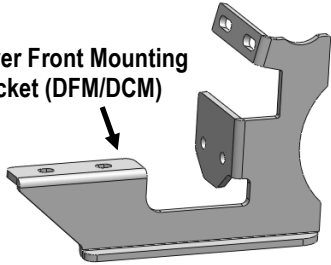
Driver Side Step Bar

Front
↑

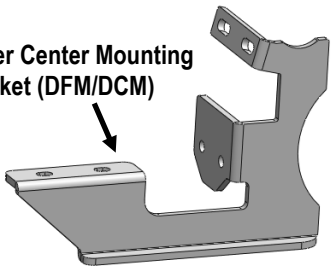
Passenger Side Step Bar



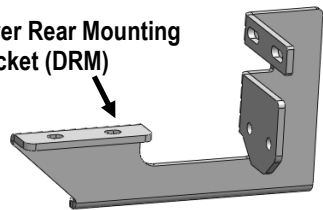
Driver Front Mounting Bracket (DFM/DCM)



Driver Center Mounting Bracket (DFM/DCM)

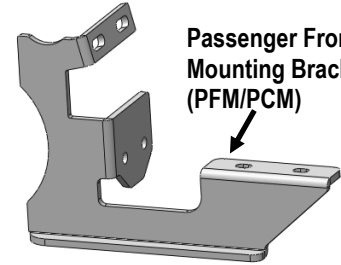


Driver Rear Mounting Bracket (DRM)

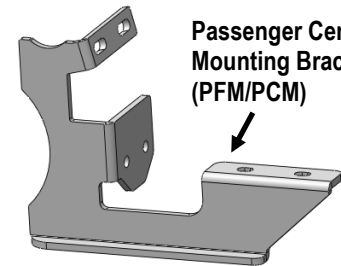


X6

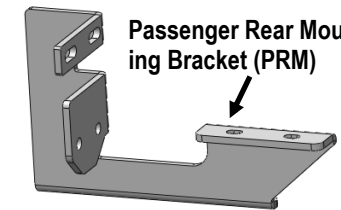
Clamp Plate



Passenger Front Mounting Bracket (PFM/PCM)



Passenger Center Mounting Bracket (PFM/PCM)



Passenger Rear Mounting Bracket (PRM)



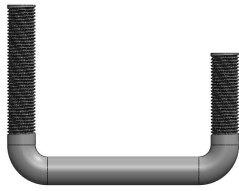
Note: *Driver Front & Center Mounting Brackets are universal
*Passenger Front & Center Mounting Brackets are universal

Customer Support: info@iboardauto.com

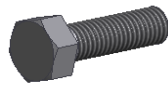


Hardware Package A (For Bracket Installation)

Item	QTY	Description	Item	QTY	Description
1#	6	M8 U-Bolts	4#	24	M8 Lock Washers
2#	12	M8X1.25-40mm Hex Bolts	5#	24	M8 Hex Nuts
3#	36	M8 Large Flat Washers			



1#



2#



3#



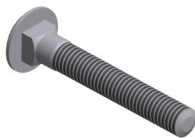
4#



5#

Hardware Package B (For Stainless Steel Step Bar Installation)

Item	QTY	Description	Item	QTY	Description
1#	12	M8X1.25-35mm Carriage Bolts	3#	12	M8 Nylon Lock Nuts
2#	12	M8 Large Flat Washers	4#	6	Sliders (Packed with Step Bars)



1 #



2 #



3 #



4 #

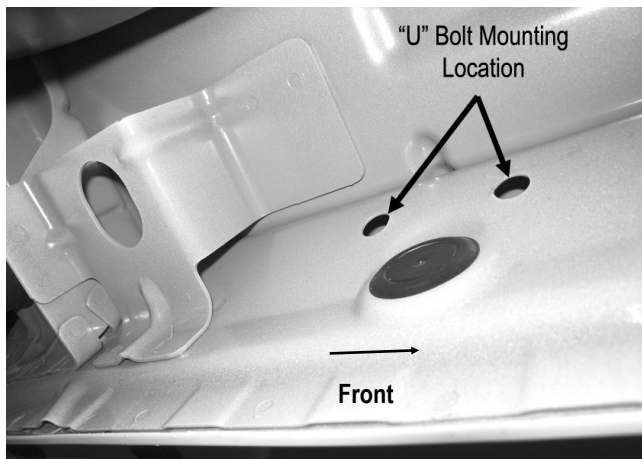


STEP 1

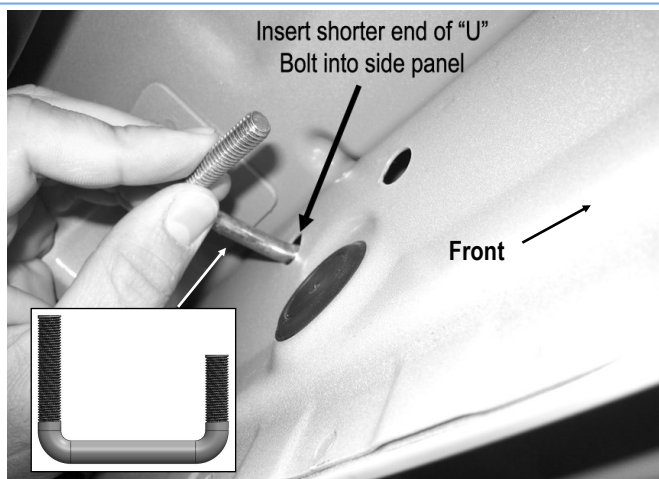
On the driver side of the vehicle, locate the (2) factory holes above rubber grommets on the side panel on the front, center and rear mounting locations, **(Fig 1)**.

STEP 2

Start the installation from the driver side front. Select (1) M8 U-Bolt. Insert the short end of the M8 U-Bolt into one of the factory holes and out from the opposite hole **(Fig 2)**.



(Fig 1) Driver Side Front Mounting Bracket Location



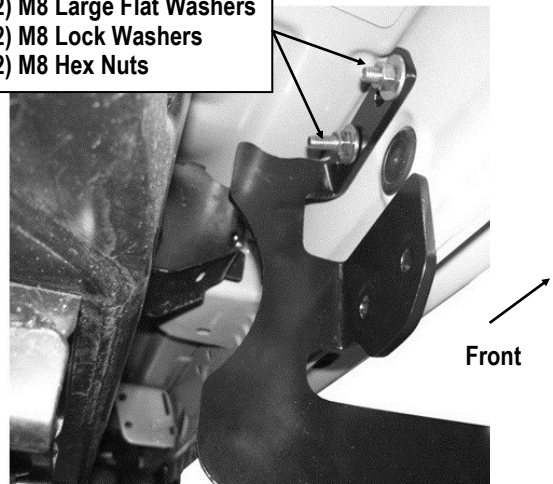
**(Fig 2) Insert the M8 U-Bolt
(Driver Side Front Mounting Location)**

STEP 3

Attach the Driver Front Mounting Bracket (**DFM/DCM**) to the installed M8 U-Bolt with (2) M8 Lock Washer, (2) M8 Large Flat Washers and (2) M8 Hex Nuts, **(Fig 3)**. Do not fully tighten hardware at this time.

NOTE: Hold the U-Bolt in place and line up the threaded ends with the slots in the Mounting Bracket carefully. Do not let the U-Bolt fall into the body panel within installing.

(2) M8 Large Flat Washers
(2) M8 Lock Washers
(2) M8 Hex Nuts

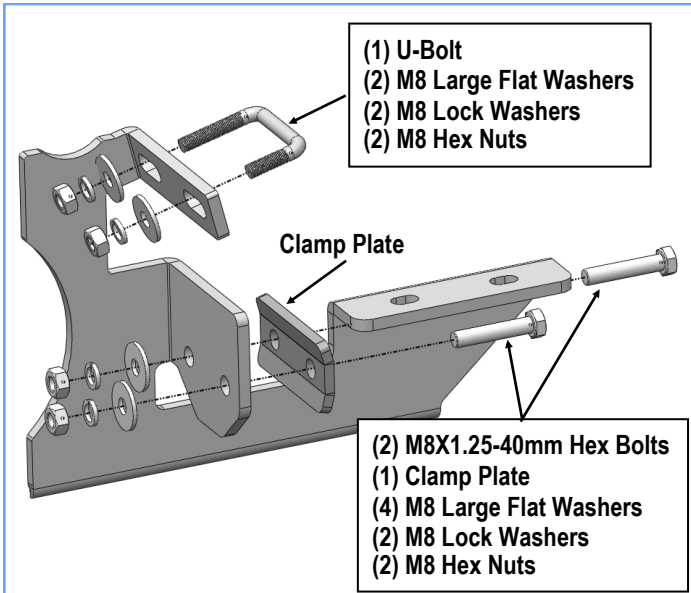


(Fig 3) Driver Side Front Mounting Bracket Installation

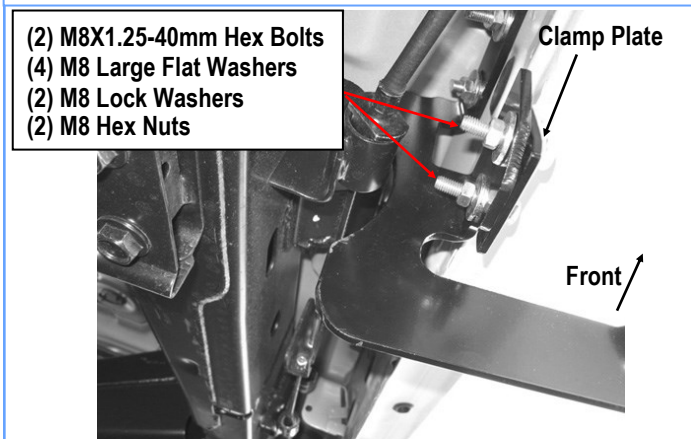
STEP 4

Position (1) Clamp Plate on the pinch weld and line up with the Driver Front Mounting Bracket, **(Fig 4)**. Attach the Clamp Plate to the Mounting Bracket with (2) M8X1.25-40mm Hex Bolts, (4) M8 Large Flat Washers, (2) M8 Lock Washers, and (2) M8 Hex Nuts, **(Fig 5-7)**. Do not fully tighten hardware at this time.

NOTE: Mount the Clamp Plate with the concave facing the inside of the vehicle, **(Fig 4)**.



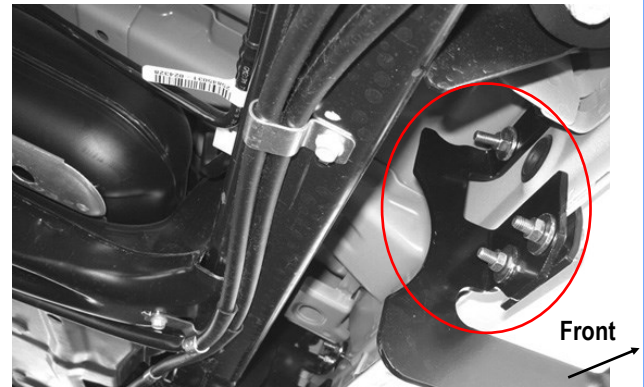
(Fig 4) Clamp Plate Installation
(On Driver Side Front Mounting Location)



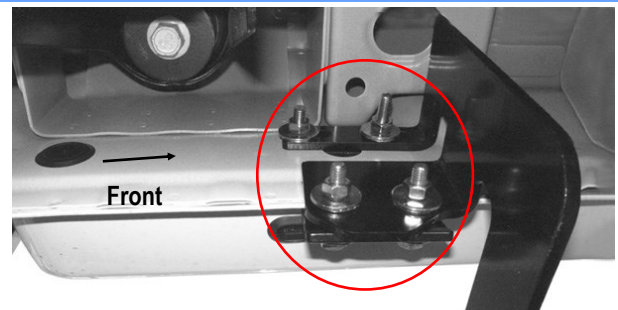
(Fig 5) Driver Side Front Mounting Bracket Installation

STEP 5

Move to the driver side center & rear mounting locations of the vehicle. Repeat **Steps 1-4** for Driver Center Mounting Bracket (**DFM/DCM**) & Driver Rear Mounting Bracket (**DRM**) installation, (**Fig 6 & 7**). Do not fully tighten hardware at this time.



(Fig 6) Driver Side Center Mounting Bracket Installation



(Fig 7) Driver Side Rear Mounting Bracket Installation

STEP 6

Once all (3) Driver side mounting brackets are installed, then proceed to the Step Bar installation. (**Figs 8 & 9**)

(1) Select (1) Slider and (2) M8X1.25-35mm Carriage Bolts;

(2) Install (2) M8X1.25-35mm Carriage Bolts in (1) Slider.

(3) Slide the Slider (with carriage bolts) to the **Step Bar**.

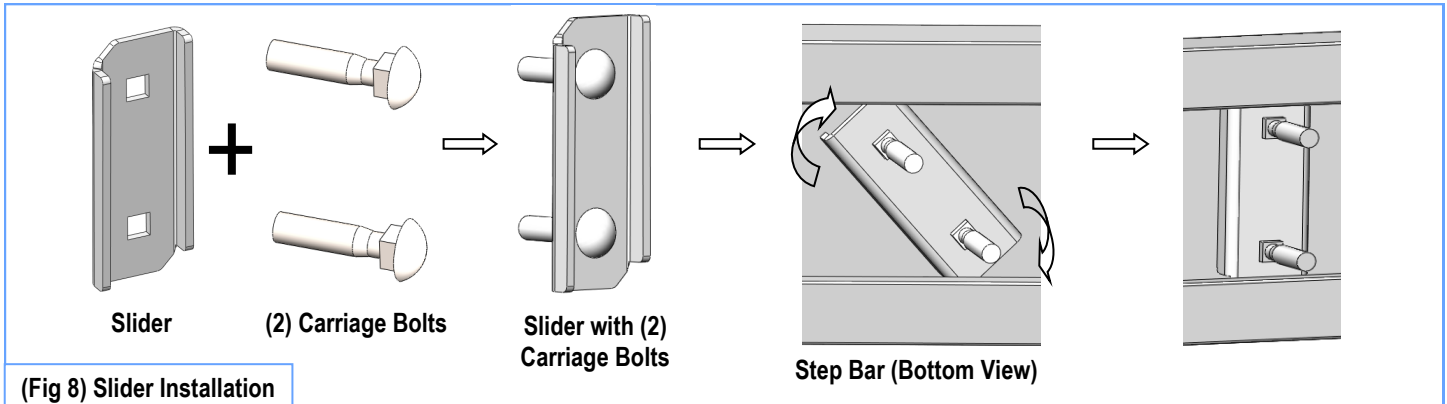
(4) Repeat to install the other (2) sliders to the step bar.

(5) Attach the Step Bar (with the Sliders) onto the installed mounting brackets. Position the Sliders to the installed brackets. Secure the Step Bar to the installed Brackets by using (6) M8 Large Flat Washers and (6) M8 Nylon Lock Nuts and (3) Sliders, (**Fig 9**). Do not fully tighten hardware at this time.

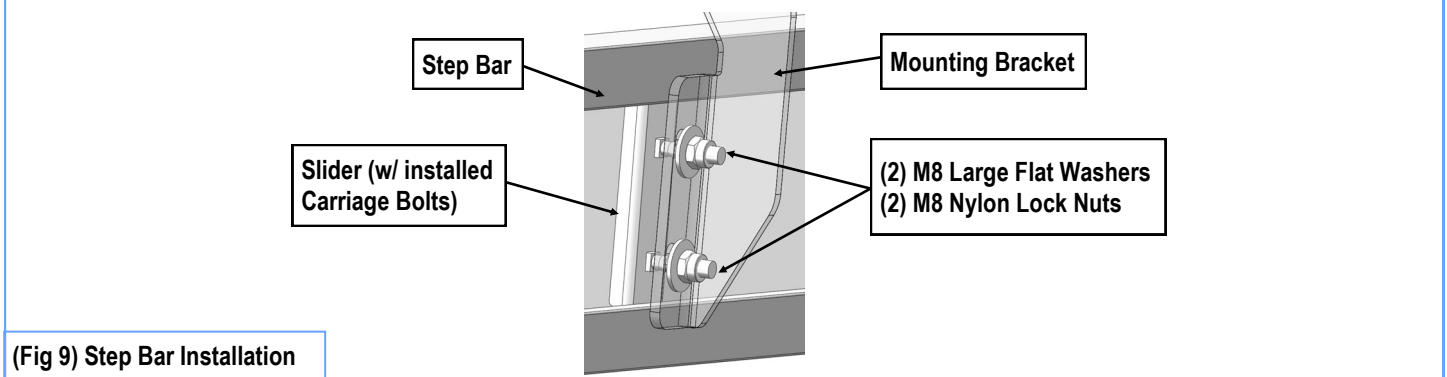
Note: The Sliders are packed with the Step Bars.

Level and adjust the Step Bar and fully tighten all hardware.

Repeat **Steps 1-6** for the other side Step Bar installation. **The installation is completed!!!**



(Fig 8) Slider Installation



(Fig 9) Step Bar Installation

Attention

Do periodic inspections to the installation to make sure that all hardware is secure and tight.
In order to protect your bars/boards, please use mild soap/non-abrasive products for cleaning only.