

iBoard®

iBoard® by APS

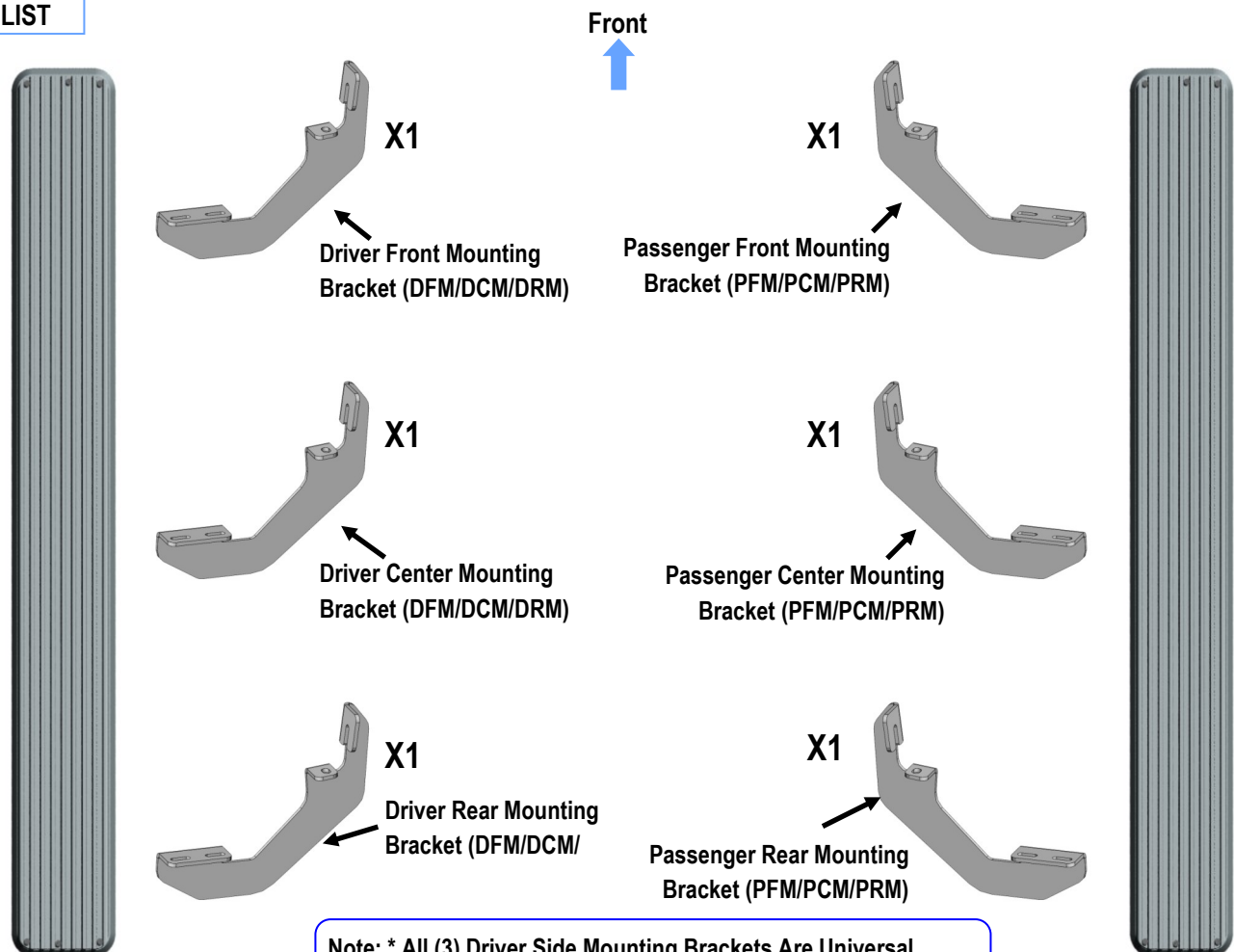
PART#: IB-198A-B

READ INSTRUCTIONS CAREFULLY BEFORE
STARTING INSTALLATION. REMOVE CONTENTS
FROM BOX AND VERIFY ALL PARTS ARE PRE-
SENT. ASSISTANCE IS RECOMMENDED.

*ROCKER PANEL MOUNT
*NO DRILLING REQUIRED

Fastener Size	Tightening Torque (ft-lbs)
6mm	6-7
8mm	16-18
10mm	31-32
12mm	56-58
14mm	92-94

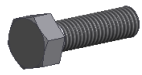
PART LIST



Note: * All (3) Driver Side Mounting Brackets Are Universal.
* All (3) Passenger Side Mounting Brackets Are Universal.

Customer Support: info@iboardauto.com

iBoard®



X12

M8X1.25-25mm Hex Bolt



X12

M8 Flat Washer



X12

M8 Lock Washer



X12

M8 Clip Nut



X12

M6X1-20mm Square
Head Bolt



X12

M6 Large Flat
Washer



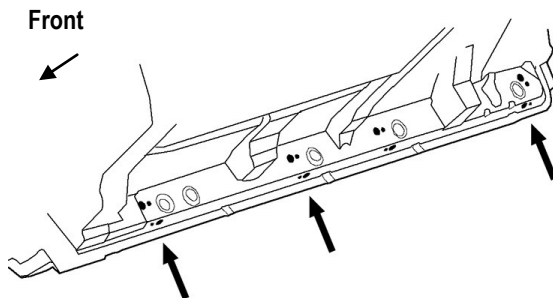
X12

M6X1 Nylon
Lock Nut

STEP 1

Start the installation from passenger side of the vehicle. Locate the passenger mounting locations along the bottom and inner side of the body panel, **(Fig 1)**.

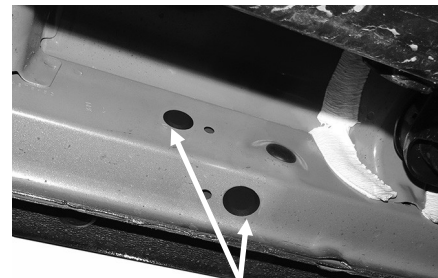
NOTE: It may help to hold a Bracket up in place to help determine the mounting holes to use along the bottom and inner side of the body.



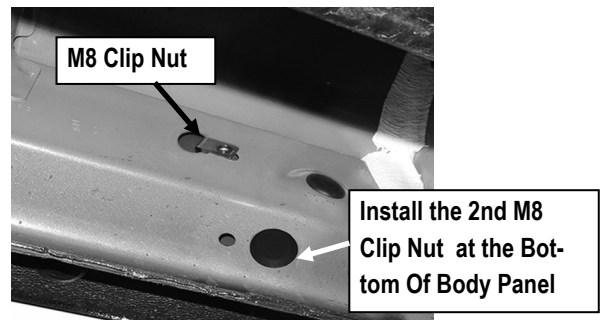
**(Fig 1) Passenger Side Mounting Locations Illustrated
(Along Bottom And Inner Of Body Panel)**

STEP 2

Remove rubber plugs as necessary from the holes on the inner and bottom of the body panel, **(Fig 2)**. Select (1) M8 Clip Nut. Slide the M8 Clip Nut into the large hole and line up threaded nut on the M8 Clip Nut with smaller hole beside the large hole on the inner of body panel, **(Fig 3)**. Repeat to install (1) M8 Clip Nut in the bottom mounting location, **(Fig 3)**.



(Fig 2) Remove Plugs From Mounting Locations As Necessary



(Fig 3) M8 Clip Nut Installation

STEP 3

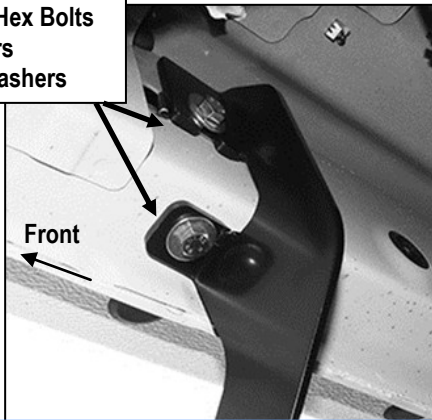
Select (1) Passenger Front Mounting Bracket (**PFM/PCM/PRM**). Attach the Bracket to the Installed (2) M8 Clip Nuts with (2) M8X1.25-25mm Hex Bolts, (2) M8 Lock Washers and (2) M8 Flat Washers, **(Fig 4)**. Snug but do not fully tighten the hardware.

Repeat **Steps 2—4** to install Passenger Center & Rear Mounting Bracket (**PFM /PCM/PRM**), **(Fig 5 & 6)**.

Note: All (3) Passenger Side Mounting Brackets are universal.

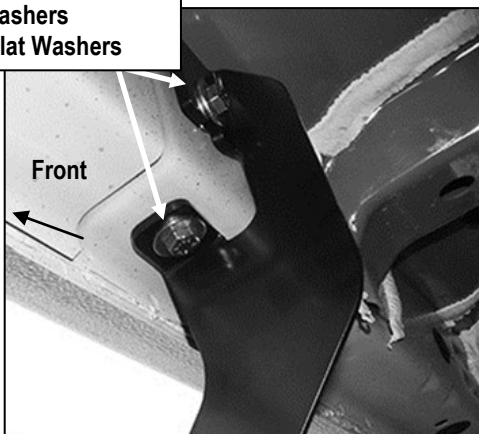
iBoard®

- (2) M8X1.25-25mm Hex Bolts
- (2) M8 Lock Washers
- (2) M8 Large Flat Washers



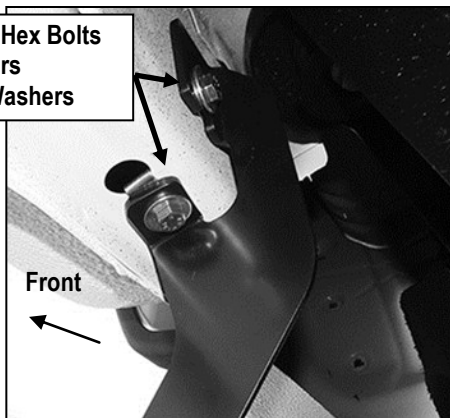
(Fig 4) Passenger Front Mounting Bracket Installation

- (2) M8X1.25-25mm Hex Bolts
- (2) M8 Lock Washers
- (2) M8 Large Flat Washers



(Fig 5) Passenger Center Mounting Bracket Installation

- (2) M8X1.25-25mm Hex Bolts
- (2) M8 Lock Washers
- (2) M8 Large Flat Washers



(Fig 6) Passenger Rear Mounting Bracket Installation

STEP 4

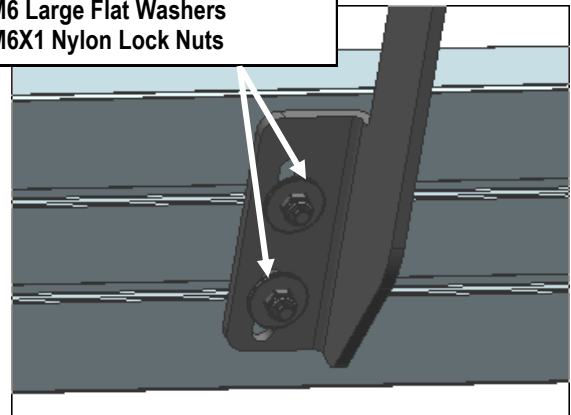
Select a Running Board. Slip (3) M6x1-20mm Square Head Bolts into each bottom channel (**Fig 7**). Carefully position the Running Board onto the (3) Mounting Brackets.

IMPORTANT: Do not slide the Running Board on the Brackets or the bottom surface of the board will be damaged. Attach the Running Board to each Mounting Brackets with (2) M6x1-20mm Square Head Bolts, (2) M6 Large Flat Washers and (2) M6 X1 Nylon Lock Nuts (**Fig 8**). Do not fully tighten at this time.



(Fig 7) Slip M6X1-20mm Square Head Bolts Into The Bottom Channels

- (2)M6X1-20mm Square Head Bolts
- (2)M6 Large Flat Washers
- (2)M6X1 Nylon Lock Nuts



(Fig 8) Running Board Installed Onto Mounting Bracket

iBoard®

STEP 5

Level and adjust the Running Board and fully tighten all hardware.

STEP 6

Repeat **Steps 1-5** for the other side Running Board installation. The installation is completed (**Fig 9**).



(Fig 9) Installation Completed

Attention

Do periodic inspections to the installation to make sure that all hardware is secure and tight.

In order to protect your bars/boards, please use only mild soap/non-abrasive products for cleaning.