

iBoard®

iBoard® by APS

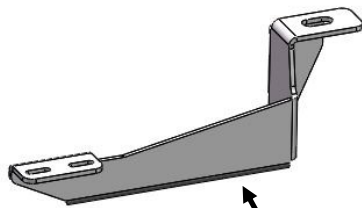
PART#: IB-091A-B

READ INSTRUCTIONS CAREFULLY BEFORE STARTING INSTALLATION. REMOVE CONTENTS FROM BOX AND VERIFY ALL PARTS ARE PRESENT. ASSISTANCE IS RECOMMENDED.

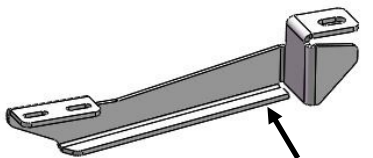
*ROCKER PANEL MOUNT
*NO DRILLING REQUIRED

Fastener Size	Tightening Torque (ft-lbs)
6mm	6-7
8mm	16-18
10mm	31-32
12mm	56-58
14mm	92-94

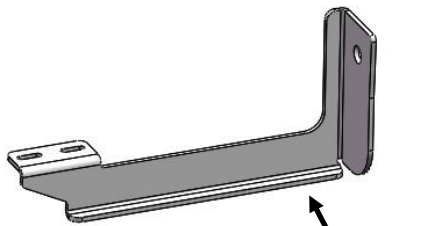
PART LIST



Driver Front Mounting Bracket (DFM)

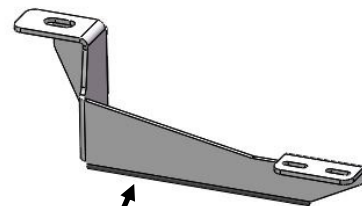


Driver Center Mounting Bracket (DCM)

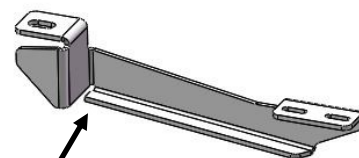


Driver Rear Mounting Bracket (DRM)

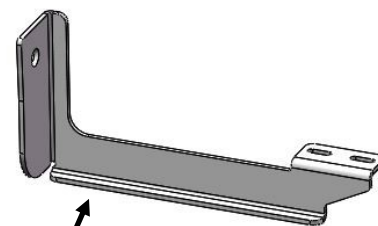
Front



Passenger Front Mounting Bracket (PFM)



Passenger Center Mounting Bracket (PCM)

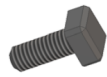


Passenger Rear Mounting Bracket (PRM)



Customer Support: info@iboardauto.com

iBoard®



X12

M6X1-20mm Square Head Bolt



X12

M6 Large Flat Washer



X12

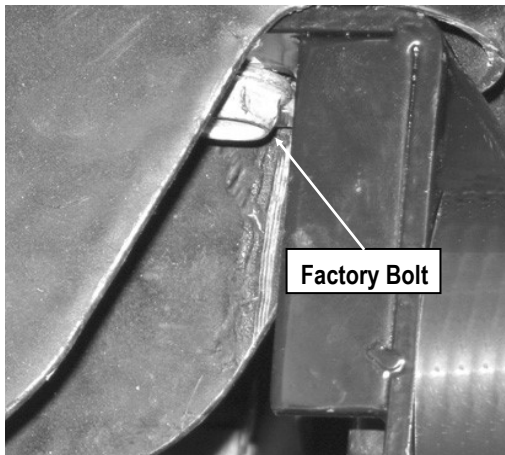
M6X1 Nylon Lock Nut

STEP 1

Start installation from the passenger side front of the vehicle. Remove passenger side front body mount bolts from vehicle. **NOTE:** Do not remove body mount bushings.

STEP 2

Hang the Passenger Front Mounting Bracket (PFM) into position by partially threading factory bolts back into body mounts (Fig 1). Do not fully tighten hardware at this time.



(Fig 1) Passenger Side Front Mounting Bracket Installation

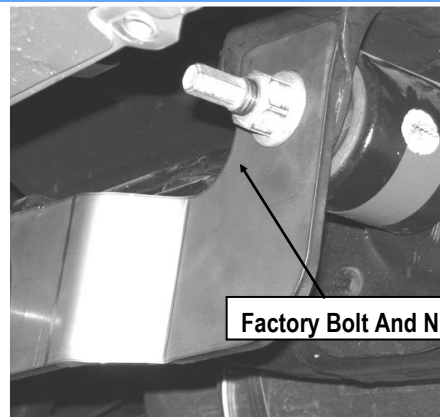
STEP 3

Move to the center of the vehicle. Repeat **Step 1** for Passenger Center Mounting Bracket (PCM) installation. Do not fully tighten hardware at this time.

STEP 4

From underside of the vehicle, remove the existing passenger side front leaf spring mounting bolt nut (Fig 2). **WARNING!** Do not attempt to remove the bolt from leaf spring.

Position Passenger Rear Mounting Bracket (PRM) onto leaf spring mounting bolt cavity. Attach Mounting Bracket to vehicle using the factory nut and bolt. Do not fully tighten hardware at this time. **NOTE:** Keep adjusting Mounting Bracket into place as you tighten the nut and bolt.



(Fig 2) Passenger Side Rear Mounting Bracket Installation

STEP 5

Select a Running Board. Slip (3) M6X1-20mm Square Head Bolts into each bottom channel (Fig 3). Carefully position the Running Board onto the (3) Mounting Brackets.

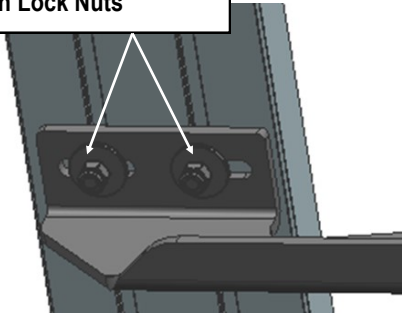
IMPORTANT: Do not slide the Running Board on the Brackets or the bottom surface of the board will be damaged. Attach the Running Board to each Mounting Bracket with (2) M6x1-20mm Square Head Bolts, (2) M6 Large Flat Washers and (2) M6 X1 Nylon Lock Nuts (Fig 4). Do not fully tighten at this time.

iBoard®



(Fig 3) Slip M6X1-20mm Square Head Bolts Into The Bottom Channels

- (2) M6X1-20mm Square Head Bolts
- (2) M6 Large Flat Washers
- (2) M6X1 Nylon Lock Nuts



(Fig 4) Running Board Installed Onto Driver Center Mounting Bracket

STEP 6

Level and adjust the Running Board and fully tighten all hardware.

STEP 7

Repeat **Steps 1-6** for the other side Running Board installation. The installation is completed.

Attention

Do periodic inspections to the installation to make sure that all hardware is secure and tight.

In order to protect your bars/boards, please use only mild soap/non-abrasive products for cleaning.