

# iBoard®

## iBoard® by APS

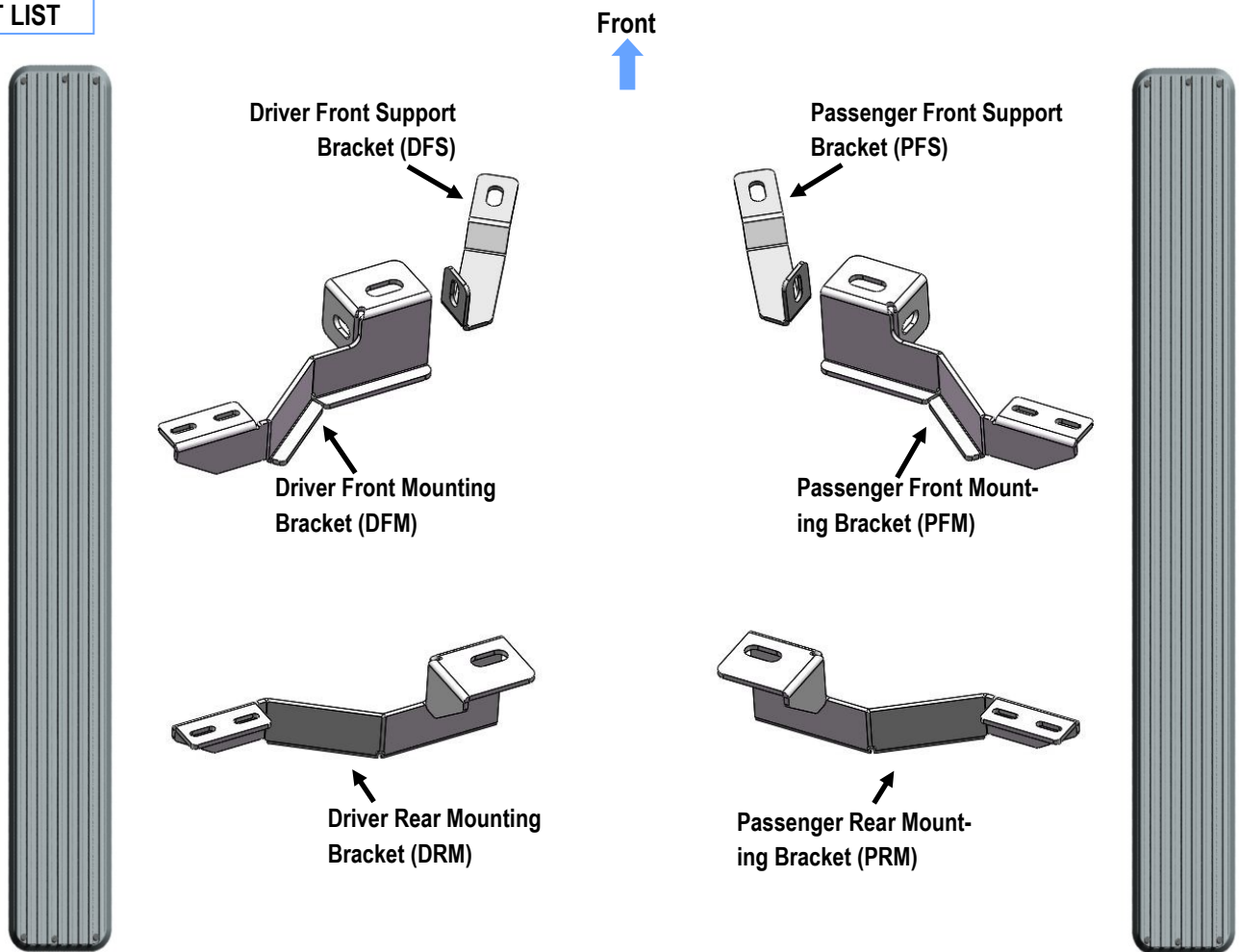
PART#: IB-019&020A-B

READ INSTRUCTIONS CAREFULLY BEFORE STARTING INSTALLATION. REMOVE CONTENTS FROM BOX AND VERIFY ALL PARTS ARE PRESENT. ASSISTANCE IS RECOMMENDED.

\*BODY FRAME MOUNT  
\*NO DRILLING REQUIRED

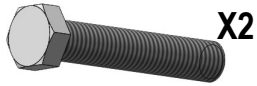
Fastener Size	Tightening Torque (ft-lbs)
6mm	6-7
8mm	16-18
10mm	31-32
12mm	56-58
14mm	92-94

### PART LIST



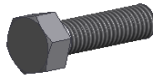
Customer Support: [info@iboardauto.com](mailto:info@iboardauto.com)

# iBoard®



X2

M12X1.75-120mm Hex Bolt



X2

M12X1.75-30mm Hex Bolt



X4

M14 Large Flat Washer



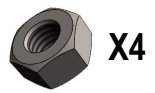
X8

M12 Large Flat Washer



X4

M12 Lock Washer



X4



X8

M6X1-20mm Square Head Bolt



X8

M6 Large Flat Washer



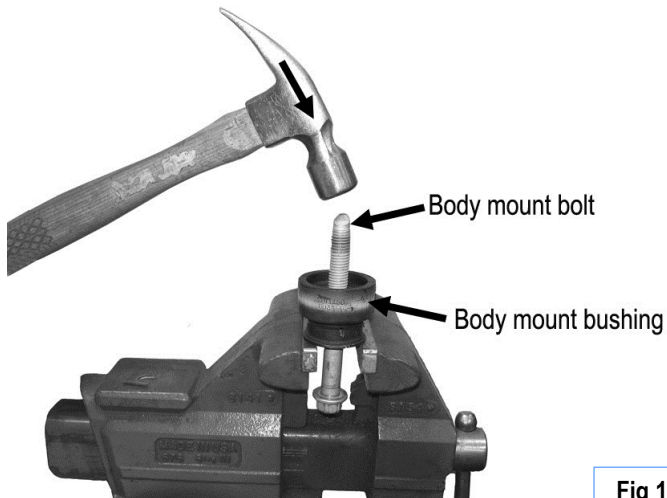
X8

M6X1 Nylon Lock Nut

## STEP 1

Start installation from the driver side front of the vehicle. Remove the factory front body mount bolt from the underside of the cab.

**NOTE:** Factory body mount bolts will need to be driven out of and back into the steel washer molded into the rubber bushing. Take precautions to avoid damage to the threads or the washer and bushing, (Fig 1).



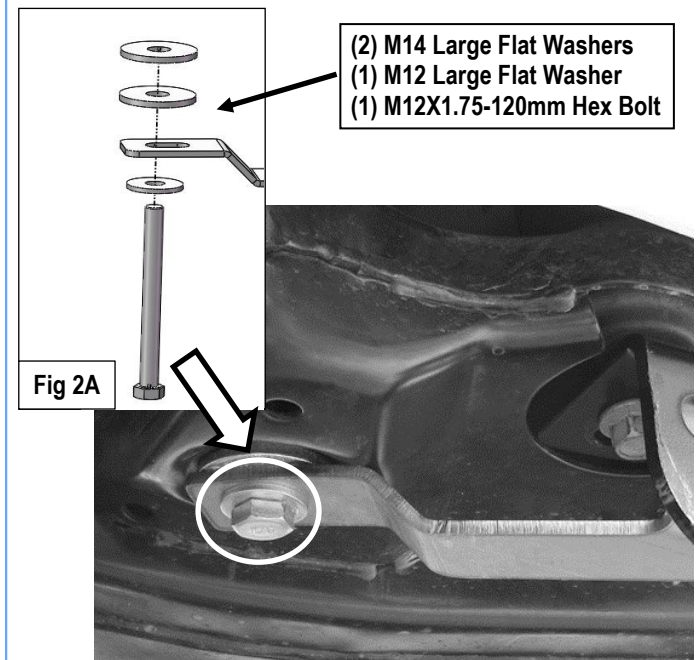
## STEP 2

Locate the Driver Front Mounting Bracket (DFM) and bolt it to the vehicle using the factory body mount bolt. **NOTE:** Brackets mount over bushings. Do not fully tighten at this time.

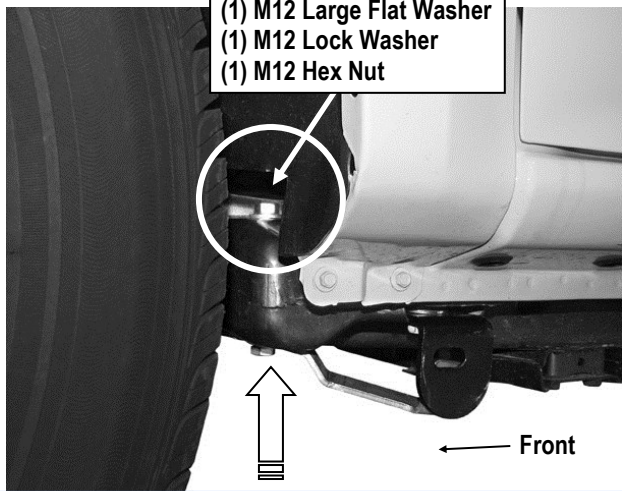
## STEP 3

Select Driver Front Support Bracket (DFS) and insert (1) M12X1.75-120mm Hex Bolt with (1) M12 Large Flat Washer through the mounting slot. Place (2) M14 Large Flat Washers onto the M12 Hex Bolt between the Support Bracket and the factory body mount, (Fig 2A & 2B).

Insert the M12 Hex Bolt up through the holes in the factory body mount and secure with (1) M12 Large Flat Washer, (1) M12 Lock Washer and (1) M12 Hex Nut, (Fig 3). Do not fully tighten hardware at this time.



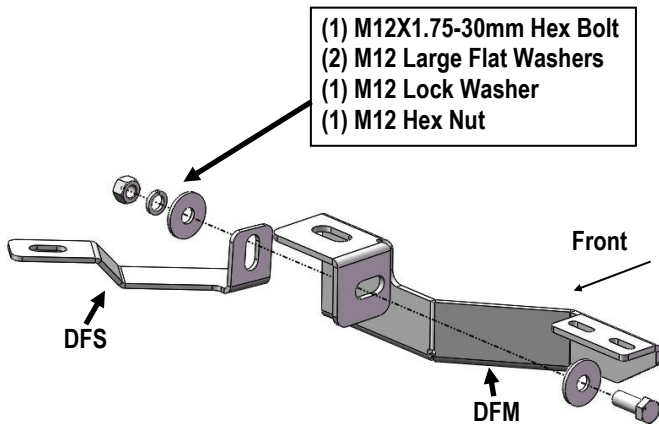
# iBoard®



(Fig 3) Driver Side Front Support Bracket Installation

## STEP 4

Line up the mounting hole in the Driver Front Support Bracket with the hole in the Driver Front Mounting Bracket, (Fig 4). Attach the Support Bracket to the Mounting Bracket use the included (1) M12X1.75-30mm Hex Bolt, (2) M12 Large Flat Washers, (1) M12 Lock Washer and (1) M12 Hex Nut, (Fig 4). Do not fully tighten hardware at this time.



(Fig 4) Driver Side Front Mounting Bracket Assembly

## STEP 5

Move to the rear mounting location. Locate the driver side rear Mounting Bracket, repeat **Steps 1** for Driver Rear Mounting Bracket (**DRM**) installation. Do not fully tighten hardware at this time.

## STEP 6

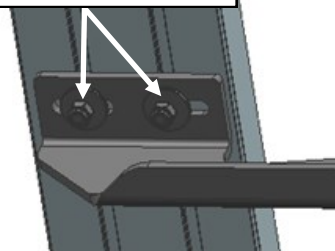
Select a Running Board. Slip (2) M6X1-20mm Square Head Bolts into each bottom channel (Fig 5). Carefully position the Running Board onto the (2) Mounting Brackets.

**IMPORTANT:** Do not slide the Running Board on the Brackets or the bottom surface of the board will be damaged. Attach the Running Board to each Mounting Bracket with (2) M6x1-20mm Square Head Bolts, (2) M6 Large Flat Washers and (2) M6 X1 Nylon Lock Nuts (Fig 6). Do not fully tighten at this time.



(Fig 5) Slip M6X1-20mm Square Head Bolts Into The Bottom Channels

(2) M6X1-20mm Square Head Bolts  
(2) M6 Large Flat Washers  
(2) M6 Nylon Lock Nuts



(Fig 6) Running Board Installed Onto the Mounting Bracket

# iBoard®

## STEP 7

Level and adjust the Running Board and fully tighten all hardware.

## STEP 8

Repeat **Steps 1-7** for other side Running Board installation. The installation is completed (**Fig 7**).



(Fig 7) Installation Completed

### Attention

**Do periodic inspections to the installation to make sure that all hardware is secure and tight.**

**In order to protect your bars/boards, please use only mild soap/non-abrasive products for cleaning.**