

iArmor[®]

iArmor[®] by APS

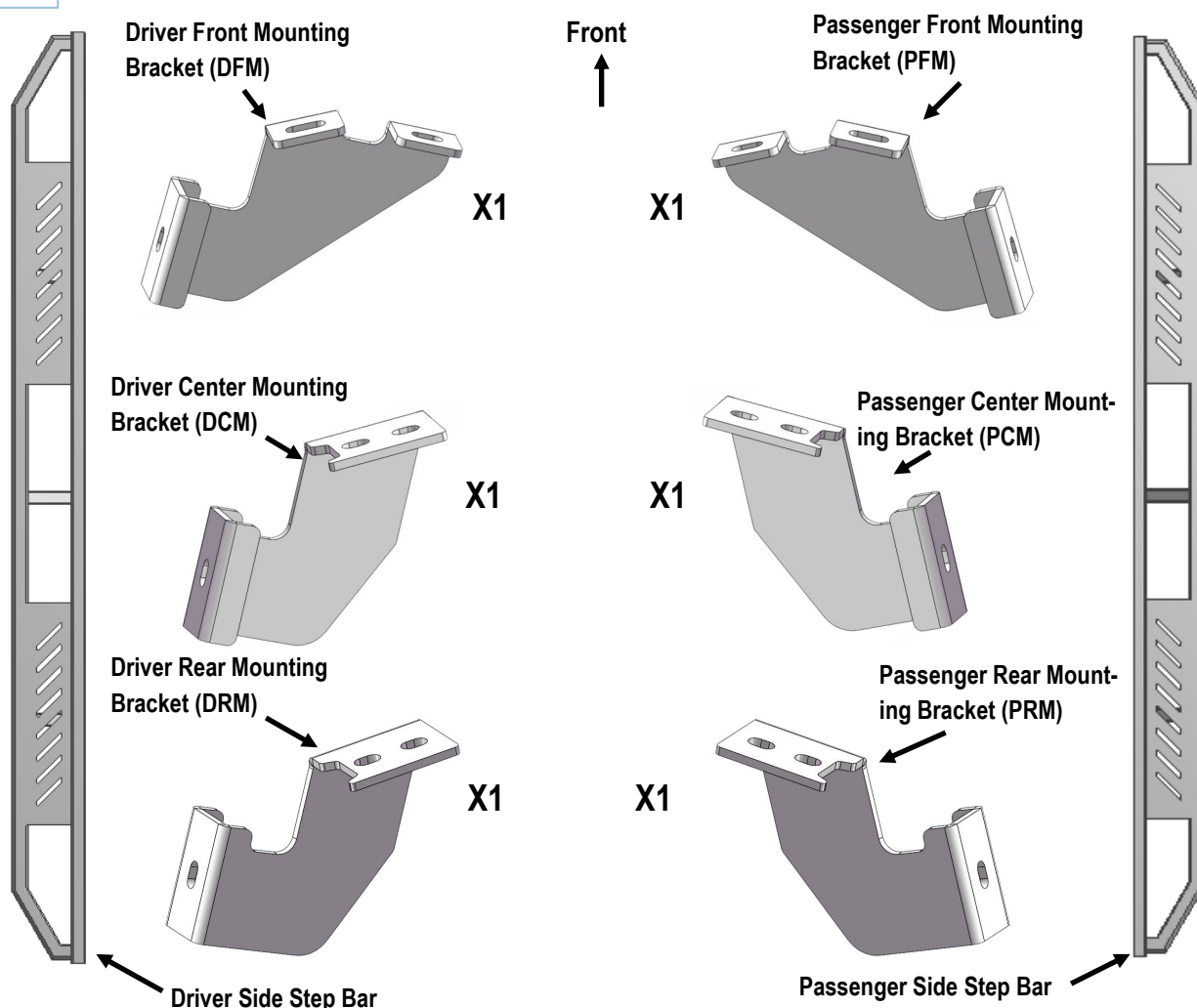
PART#: IA-S058

BEFORE INSTALLATION

REMOVE CONTENTS FROM BOX. VERIFY ALL PARTS ARE PRESENT. READ INSTRUCTIONS CAREFULLY BEFORE STARTING INSTALLATION. ASSISTANCE IS RECOMMENDED. THANK YOU FOR CHOOSING OUR PRODUCT!

Fastener Size	Tightening Torque (ft-lbs)
6mm	6-7
8mm	16-18
10mm	31-32
12mm	56-58
14mm	92-94

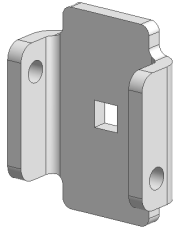
PART LIST



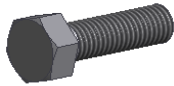
Customer Support: info@iarmorauto.com

iArmor®

X6



U Bracket



X12

M8X1.25-25mm Hex Bolt



X18

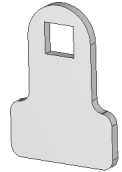
M8 Large Flat Washer



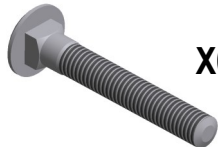
X18

M8 Lock Washer

X12



Spacer



X6

M8X1.25-55mm Carriage Bolt



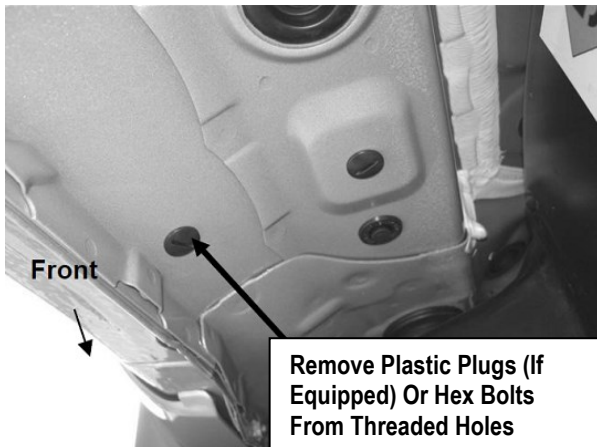
X6

M8X1.25 Hex Nut

The instruction here is for your reference only. We strongly recommend the professional installer for best result. We are not responsible for any damage caused by the installation.

STEP 1

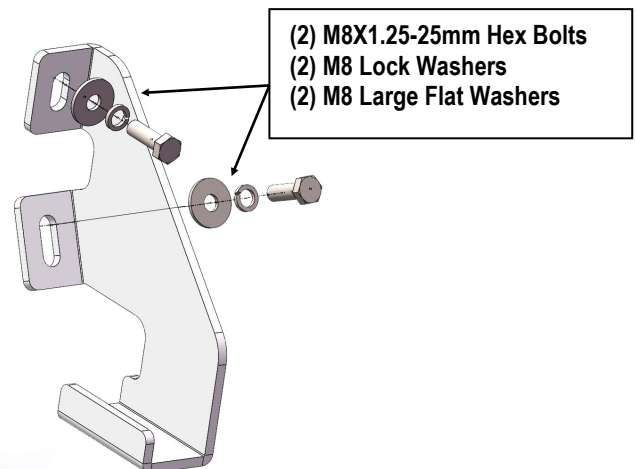
Starting on the driver side front of the vehicle, remove the existing (2) factory bolts, (or plastic plugs) (**Fig 1**). This will be the mounting location for the Driver Front Mounting Bracket (**DFM**).



(Fig 1) Driver Front Mounting Location Pictured

STEP 2

Select the Driver Front Mounting Bracket (**DFM**). Attach the Bracket to the vehicle using the included (2) M8X1.25-25mm Hex Bolts, (2) M8 Lock Washers and (2) M8 Large Flat Washers (**Fig 2**). Do not fully tighten hardware at this time.

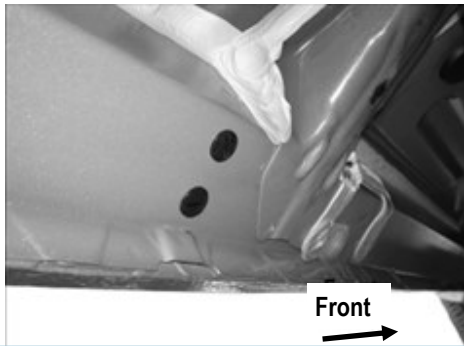


(Fig 2) Driver Front Mounting Location Pictured

STEP 3

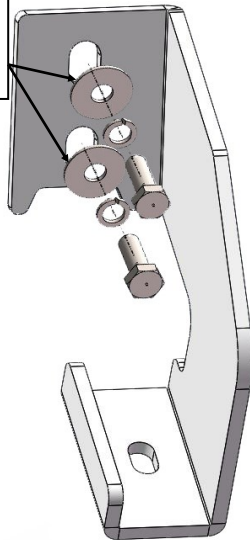
Move along the side panel to the next mounting location closest to the front Bracket (**Fig 3**). Repeat **Steps 1 & 2** to install the Driver Center Mounting Bracket (**DCM**), (**Fig 4**).

iArmor®



(Fig 3) Example Of Driver Center Mounting Bracket (DCM) And Driver Rear Mounting Bracket (DRM) Locations

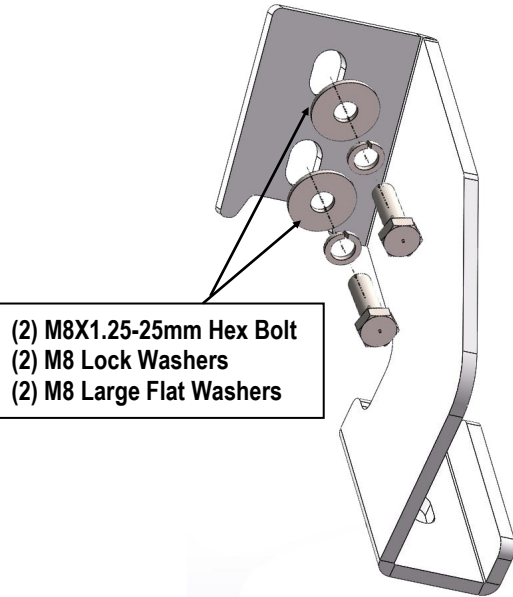
(2) M8X1.25-25mm Hex Bolt
(2) M8 Lock Washers
(2) M8 Large Flat Washers



(Fig 4) Driver Center Mounting Bracket (DCM) Installed

STEP 4

Next, move to the last mounting location at the back of the cab. Select the Driver Rear Mounting Bracket (**DRM**). Repeat **Steps 2 & 3** to install the rear Bracket (**Fig 5**).



(Fig 5) Driver Rear Mounting Bracket (DRM) Installed

STEP 5

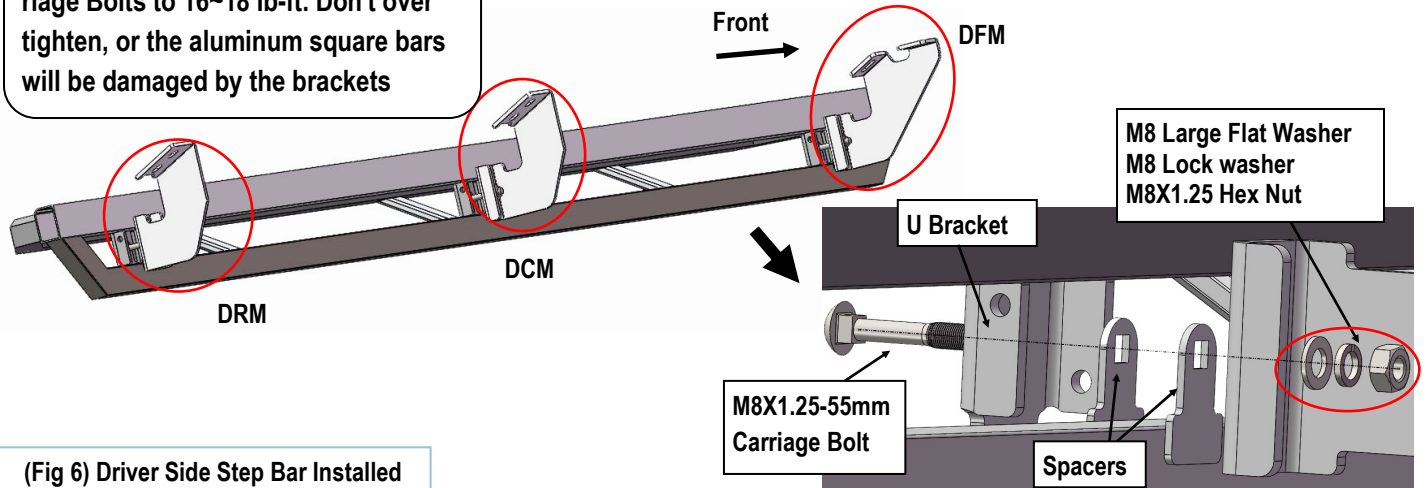
Once all (3) driver side mounting brackets are installed, select and attach the Driver Side Step Bar onto the Mounting Brackets with (3) U Brackets, (6) Spacers, (3) M8X1.25-55mm Carriage Bolts, (3) M8 Large Flat Washers, (3) M8 Lock Washers and (3) M8X1.25 Hex Nuts (**Fig 6**). Do not fully tighten hardware at this time.

STEP 6

Properly level and adjust the Step Bar and fully tighten all hardware.

iArmor®

NOTE: Torque all M8 X1.25-55mm Carriage Bolts to 16~18 lb-ft. Don't over tighten, or the aluminum square bars will be damaged by the brackets



(Fig 6) Driver Side Step Bar Installed

STEP 7

Move to the passenger side of the vehicle. Repeat **Steps 1-6** to install passenger side step bar.

Installation completed (Fig 7).



(Fig 7) Installation Completed

Attention

Do periodic inspections to the installation to make sure that all hardware is secure and tight.

In order to protect your bars/boards, please use only mild soap/non-abrasive products for cleaning.