

iArmor[®]

iArmor[®] by APS

PART#: IA-S936H

BEFORE INSTALLATION

REMOVE CONTENTS FROM BOX. VERIFY ALL PARTS ARE PRESENT. READ INSTRUCTIONS CAREFULLY BEFORE STARTING INSTALLATION. ASSISTANCE IS RECOMMENDED. THANK YOU FOR CHOOSING OUR PRODUCT!

***ROCKER PANEL MOUNT**

***NO DRILLING / TRIMMING REQUIRED**

Torque Value

| Fastener Size | Tightening Torque (ft-lbs) | Required |
|---------------|----------------------------|----------|
| 6mm | 6-7 | X |
| 8mm | 16-18 | √ |
| 10mm | 31-32 | X |
| 12mm | 56-58 | X |
| 14mm | 92-94 | X |

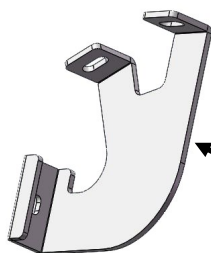
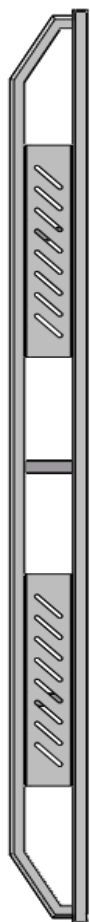
PART LIST

Driver Side Step Bar

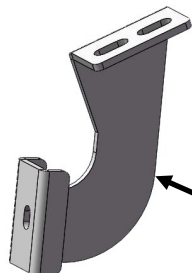
Front



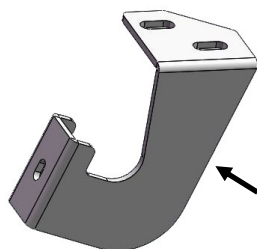
Passenger Side Step Bar



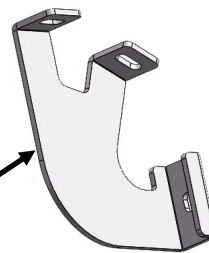
Driver Front Mounting Bracket (DFM)



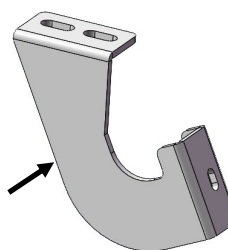
Driver Center Mounting Bracket (DCM/PCM)



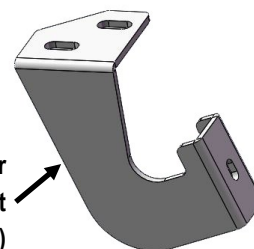
Driver Rear Mounting Bracket (DRM)



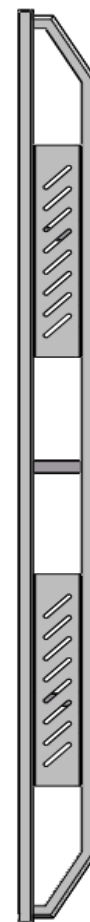
Passenger Front Mounting Bracket (PFM)



Passenger Center Mounting Bracket (DCM/PCM)



Passenger Rear Mounting Bracket (PRM)

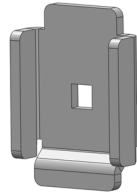


Customer Support: info@iarmorauto.com

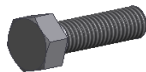
iArmor[®]

Hardware Package A (For Bracket Installation)

| Item | QTY | Description | Item | QTY | Description |
|------|-----|------------------------|------|-----|-----------------------|
| 1# | 6 | U Brackets | 3# | 12 | M8 Large Flat Washers |
| 2# | 12 | M8X1.25-30mm Hex Bolts | 4# | 12 | M8 Lock Washers |



1 #



2 #



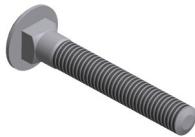
3 #



4 #

Hardware Package B (For Step Bar Installation)

| Item | QTY | Description | Item | QTY | Description |
|------|-----|-----------------------------|------|-----|-----------------|
| 1# | 6 | M8X1.25-55mm Carriage Bolts | 3# | 6 | M8 Lock Washers |
| 2# | 6 | M8 Large Flat Washers | 4# | 6 | M8 Hex Nuts |



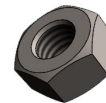
1 #



2 #



3 #



4 #

iArmor®

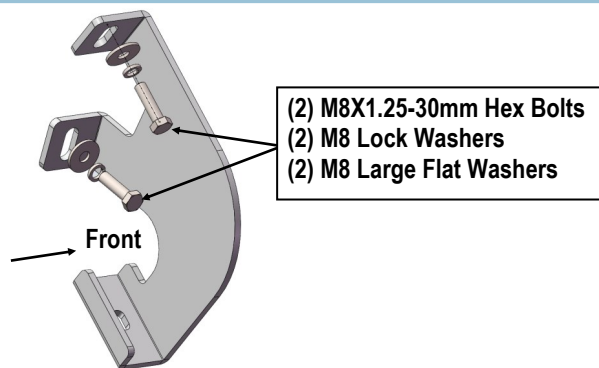
The instruction here is for your reference only. We strongly recommend the professional installer for best result. We are not responsible for any damage caused by the installation.

STEP 1

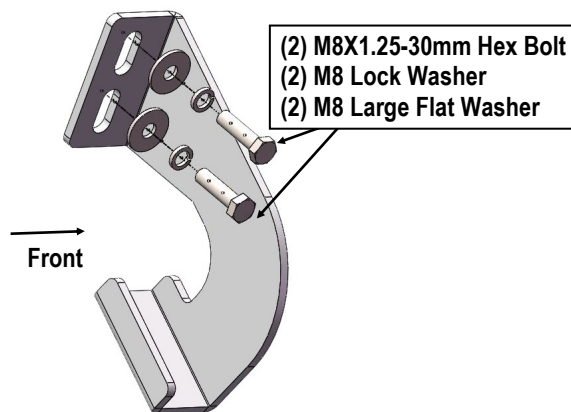
Start installation from the driver side of the vehicle. Identify the Driver Side Mounting Locations along the inner side of the rocker panel (Fig 1). (2) factory threaded holes on each location.

STEP 2

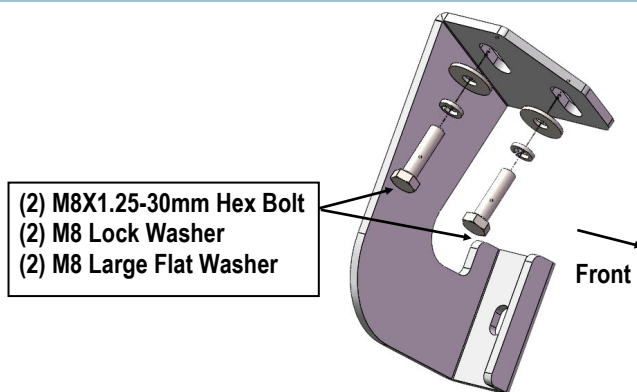
Attach the (3) driver side mounting brackets onto the mounting locations with (2) M8X1.25-30mm Hex Bolt, (2) M8 Lock Washers and (2) M8 Large Flat Washers for each mounting bracket (Fig 2-4).



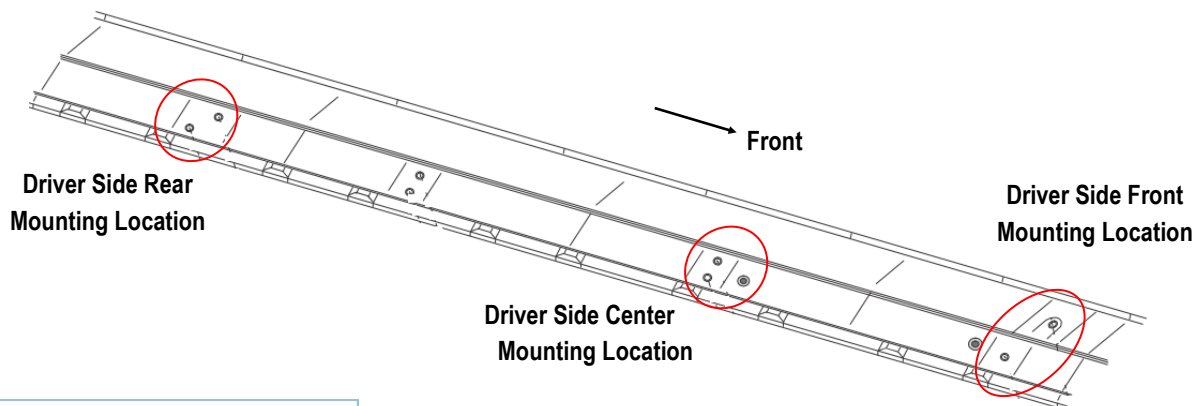
(Fig 2) Driver Front Mounting Bracket (DFM) Installation



(Fig 3) Driver Center Mounting Bracket (DCM/PCM) Installation



(Fig 4) Driver Rear Mounting Bracket (DRM) Installation



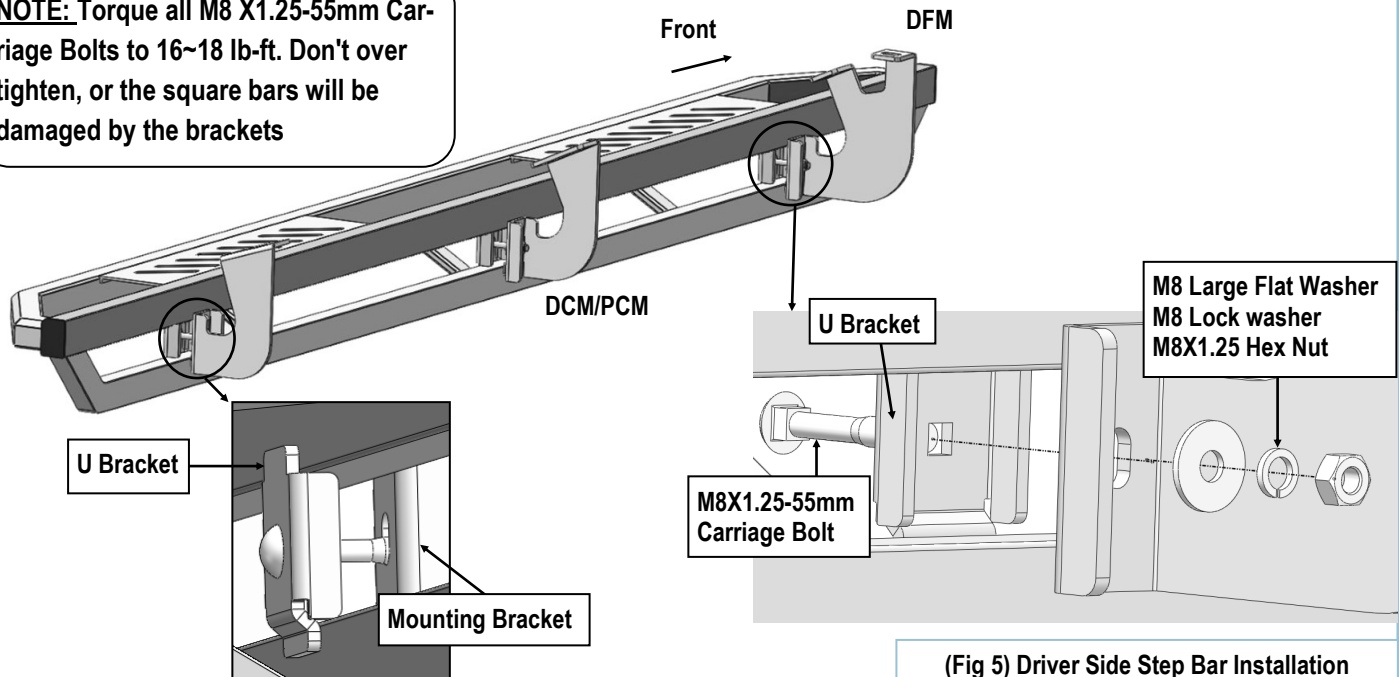
(Fig 1) Driver Side Mounting Locations

iArmor[®]

STEP 3

Once all (3) driver side mounting brackets are installed, select and attach the Driver Side Step Bar onto the Mounting Brackets with (3) U Brackets, (3) M8X1.25-55mm Carriage Bolts, (3) M8 Large Flat Washers, (3) M8 Lock Washers and (3) M8X1.25 Hex Nuts (**Fig 5**). Do not fully tighten hardware at this time.

NOTE: Torque all M8 X1.25-55mm Carriage Bolts to 16~18 lb-ft. Don't over tighten, or the square bars will be damaged by the brackets



(Fig 5) Driver Side Step Bar Installation

STEP 4

Properly level and adjust the Step Bar and fully tighten all hardware.

STEP 5

Move to the passenger side of the vehicle. Repeat **Steps 1-4** to install passenger side step bar.

Installation completed.

Attention

Do periodic inspections to the installation to make sure that all hardware is secure and tight.

In order to protect your bars/boards, please use mild soap/non-abrasive products for cleaning only.