

iArmor®

iArmor® by APS

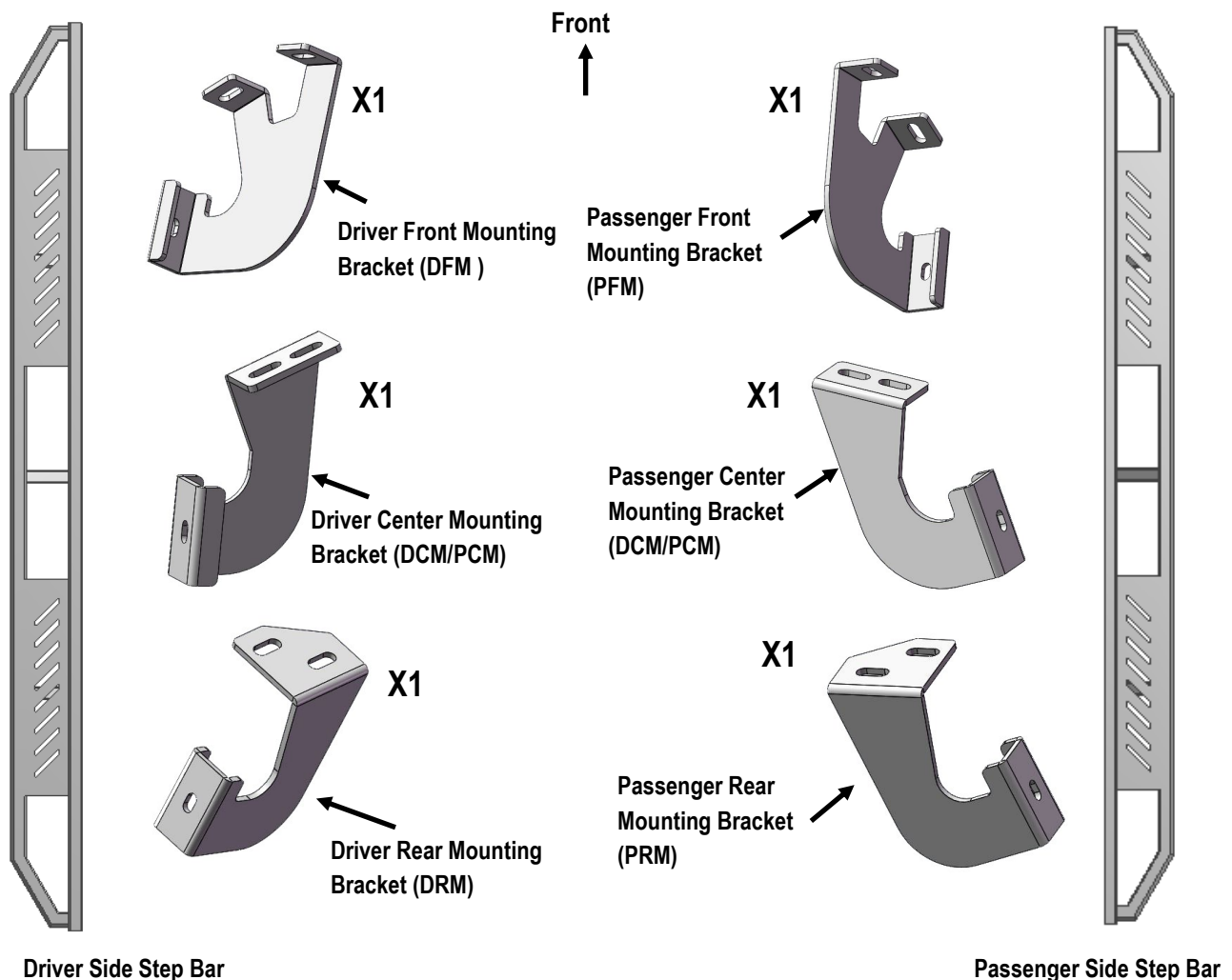
PART#: IA-S936

BEFORE INSTALLATION

REMOVE CONTENTS FROM BOX. VERIFY ALL PARTS ARE PRESENT. READ INSTRUCTIONS CAREFULLY BEFORE STARTING INSTALLATION. ASSISTANCE IS RECOMMENDED. THANK YOU FOR CHOOSING OUR PRODUCT!

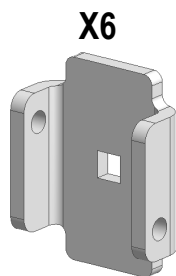
Fastener Size	Tightening Torque (ft-lbs)
6mm	6-7
8mm	16-18
10mm	31-32
12mm	56-58
14mm	92-94

PART LIST

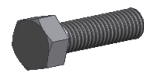


Customer Support: info@iarmorauto.com

iArmor®



U Bracket



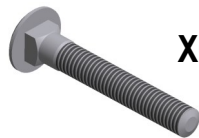
M8X1.25-30mm Hex Bolt



M8 Large Flat Washer



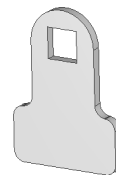
M8 Lock Washer



M8X1.25-55mm Carriage Bolt



M8X1.25 Hex Nut

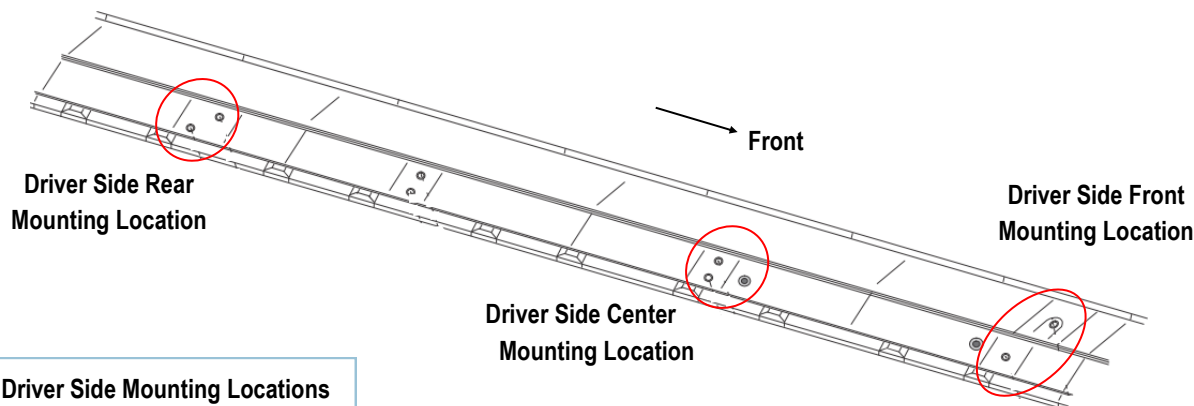


Spacer

The instruction here is for your reference only. We strongly recommend the professional installer for best result. We are not responsible for any damage caused by the installation.

STEP 1

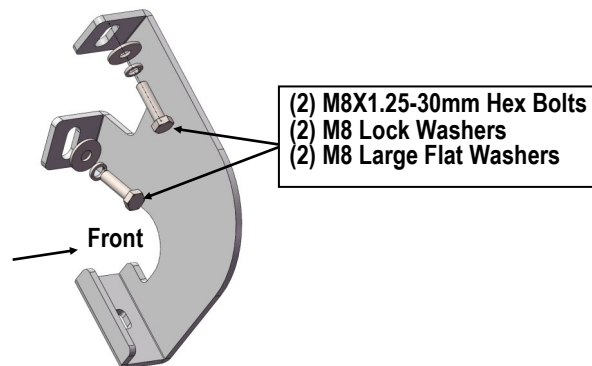
Start installation from the driver side of the vehicle. Identify the Driver Side Mounting Locations along the inner side of the rocker panel (**Fig 1**). (2) factory threaded holes on each location.



(Fig 1) Driver Side Mounting Locations

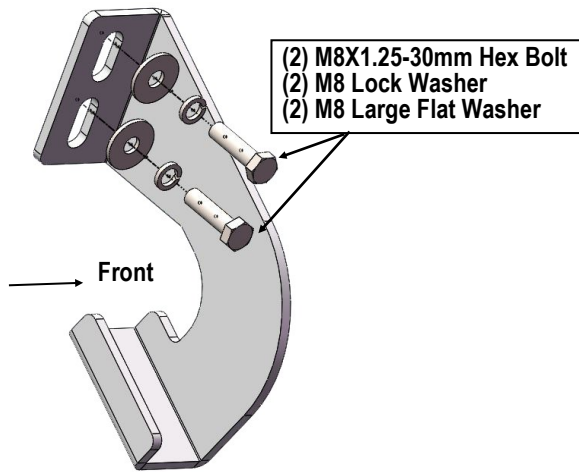
STEP 2

Attach the (3) driver side mounting brackets onto the mounting locations with (2) M8X1.25-30mm Hex Bolt, (2) M8 Lock Washers and (2) M8 Large Flat Washers for each mounting bracket (**Fig 2-4**).

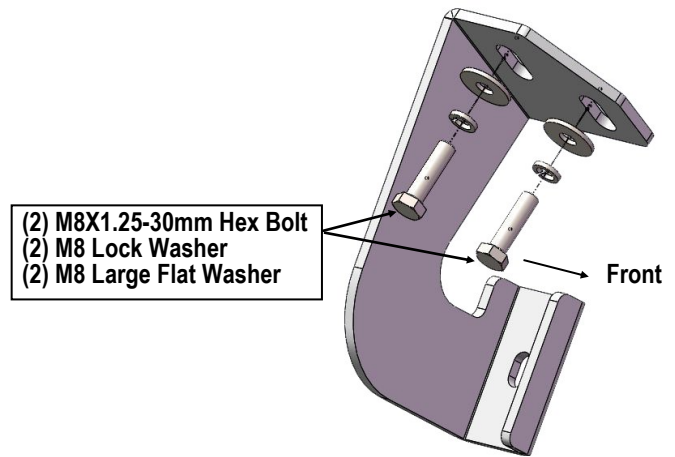


(Fig 2) Driver Front Mounting Bracket (DFM) Installed

iArmor®



(Fig 3) Driver Center Mounting Bracket (DCM/PCM) Installed

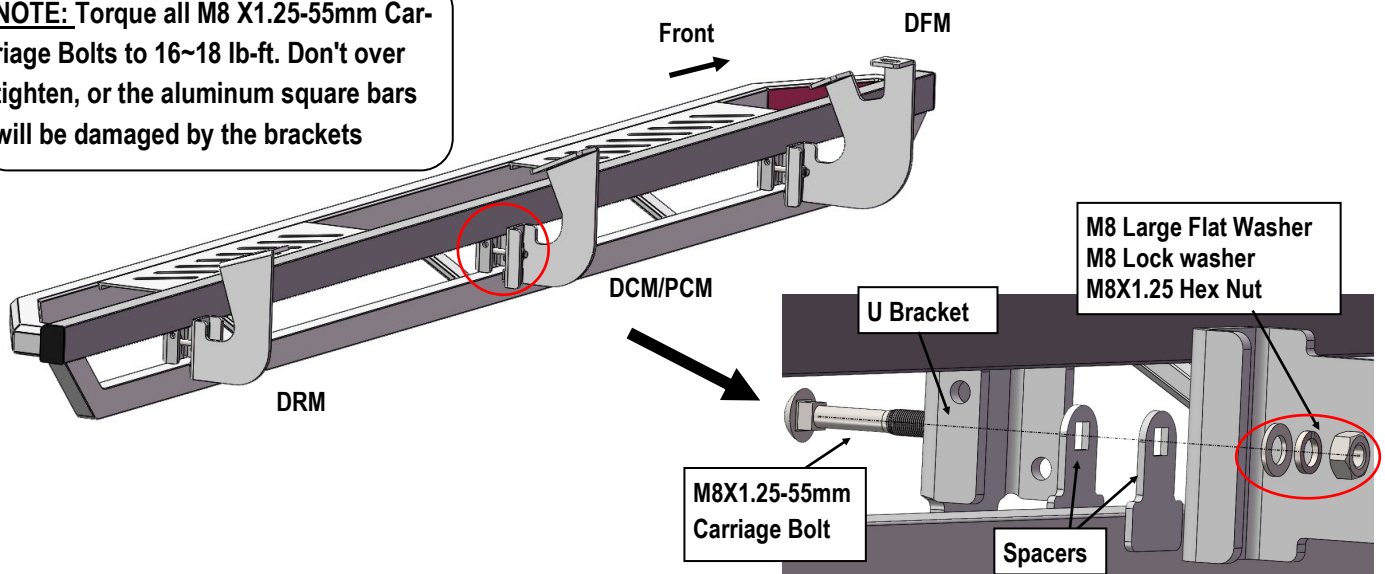


(Fig 4) Driver Rear Mounting Bracket (DRM) Installed

STEP 3

Once all (3) driver side mounting brackets are installed, select and attach the Driver Side Step Bar onto the Mounting Brackets with (3) U Brackets, (6) Spacers, (3) M8X1.25-55mm Carriage Bolts, (3) M8 Large Flat Washers, (3) M8 Lock Washers and (3) M8X1.25 Hex Nuts (**Fig 5**). Do not fully tighten hardware at this time.

NOTE: Torque all M8 X1.25-55mm Carriage Bolts to 16~18 lb-ft. Don't over tighten, or the aluminum square bars will be damaged by the brackets



(Fig 5) Driver Side Step Bar Installed

iArmor®

STEP 4

Properly level and adjust the Step Bar and fully tighten all hardware.

STEP 5

Move to the passenger side of the vehicle. Repeat **Steps 1-4** to install passenger side step bar.

Installation completed (**Fig 6**).



(Fig 6) Installation Completed

Attention

Do periodic inspections to the installation to make sure that all hardware is secure and tight.

In order to protect your bars/boards, please use only mild soap/non-abrasive products for cleaning.