

**PART#: IA-S291H**

## iArmor® Series

### BEFORE INSTALLATION

REMOVE CONTENTS FROM BOX. VERIFY ALL PARTS ARE PRESENT. READ INSTRUCTIONS CAREFULLY BEFORE STARTING INSTALLATION. ASSISTANCE IS RECOMMENDED. THANK YOU FOR CHOOSING OUR PRODUCT!

**\*ROCKER PANEL MOUNT**

**\*NO DRILLING / CUTTING REQUIRED**

### Torque Value

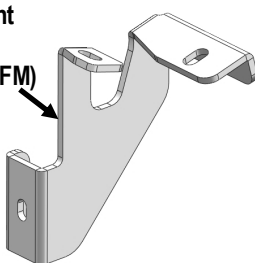
Fastener Size	Tightening Torque (ft-lbs)	Required
6mm	6-7	X
8mm	16-18	√
10mm	31-32	√
12mm	56-58	X
14mm	92-94	X

### PART LIST

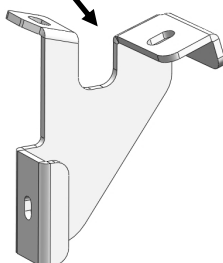
#### Driver Side Step Bar



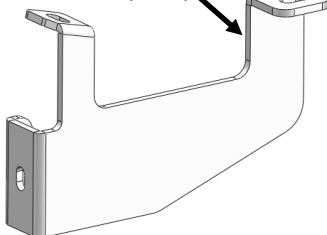
Driver Front Mounting Bracket (DFM)



Driver Center Mounting Bracket (DCM)



Driver Rear Mounting Bracket (DRM)



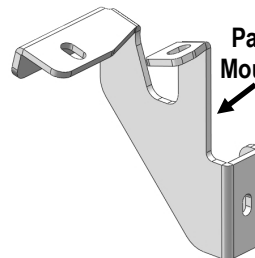
Front



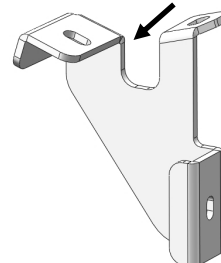
#### Passenger Side Step Bar



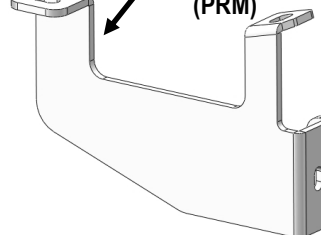
Passenger Front Mounting Bracket (PFM)



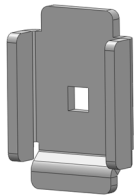
Passenger Center Mounting Bracket (PCM)



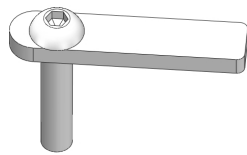
Passenger Rear Mounting Bracket (PRM)



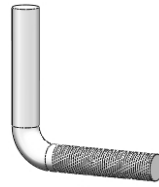
Hardware Package A (For Bracket Installation)					
Item	QTY	Description	Item	QTY	Description
1#	6	U Brackets	7#	4	M10 Lock Washers
2#	8	M8 Bolt Plates	8#	12	M10X1.5 Hex Nuts
3#	4	M10 L-Shaped Bolts	9#	8	M8 Large Flat Washers
4#	4	M10 Plastic Washers	10#	8	M8 Lock Washers
5#	8	M8 Plastic Washers	11#	8	M8X1.25 Hex Nuts
6#	4	M10 Large Flat Washers			



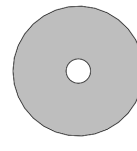
1 #



2 #



3 #



4 #



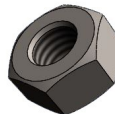
5 #



6 #



7 #



8 #



9 #

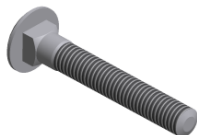


10 #




11 #


Hardware Package B (For Step Bar Installation)					
Item	QTY	Description	Item	QTY	Description
1#	6	M8X1.25-55mm Carriage Bolts	3#	6	M8 Lock Washers
2#	6	M8 Large Flat Washers	4#	6	M8 Hex Nuts



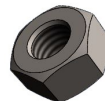
1 #



2#



3 #

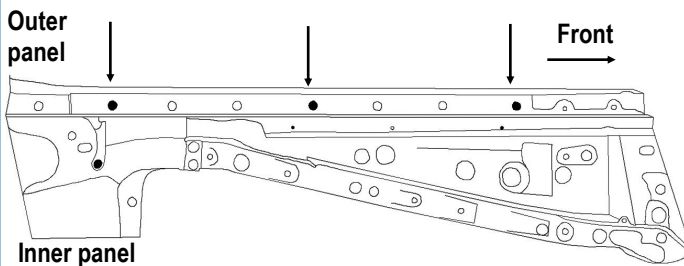


4 #

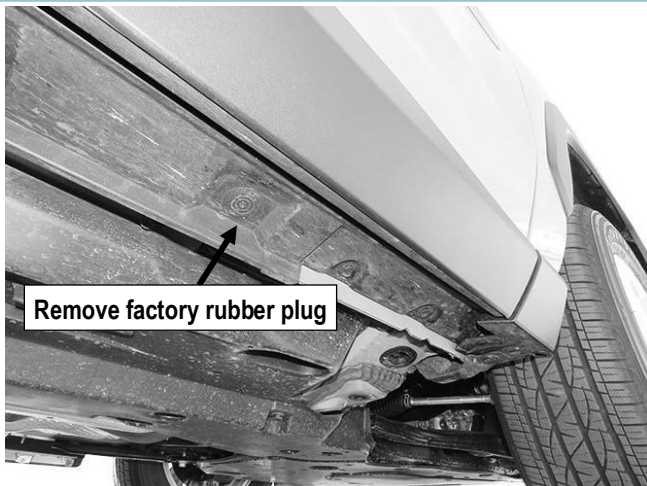
The instruction here is for your reference only. We strongly recommend the professional installer for best result. We are not responsible for any damage caused by the installation.

## STEP 1

Start installation from the passenger side front of the vehicle. Locate the Passenger Front mounting location and remove the factory round rubber plug in the bottom of the outer rocker panel, (Fig 1-2).



(Fig 1) Passenger Rocker Panel and Floor Panel



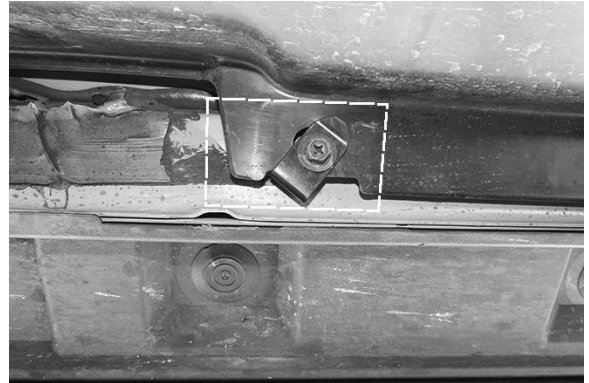
(Fig 2) Driver Side Front Mounting Location

## STEP 2

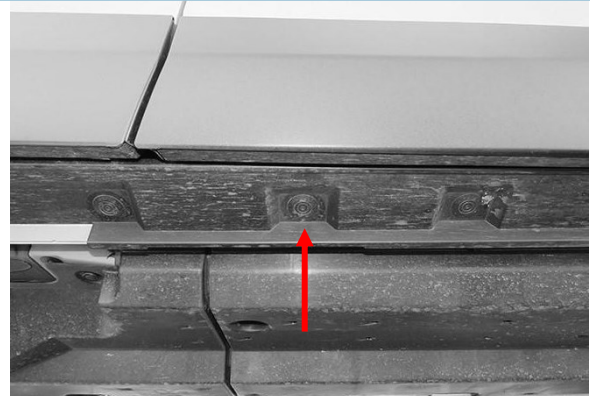
Select the Passenger Front Mounting Bracket, (PFM). Hold the mounting bracket up to the mounting location. Trace the outline of the bracket onto the plastic cover where the top of the Passenger Front Mounting Bracket touches, (Fig 3).

## STEP 3

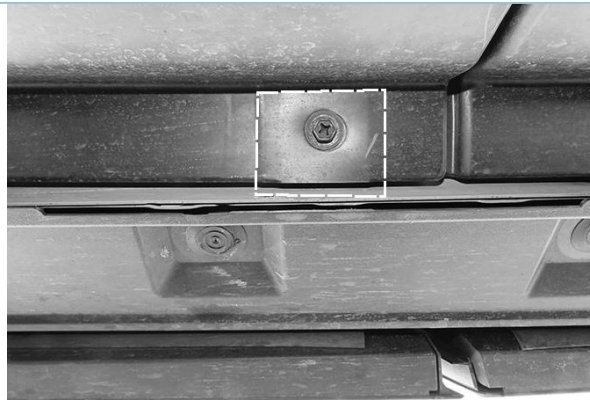
Move to the center & rear mounting location. Repeat Step 2 to mark the Passenger Center & Rear plastic covers, (Figs 4-7). Remove the plastic covers.



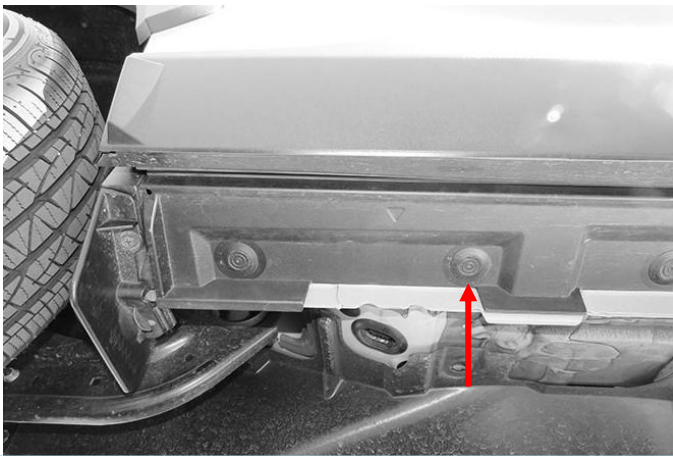
(Fig 3) Passenger Front mounting location, cut along dotted lines



(Fig 4) Passenger Center mounting location



(Fig 5) Passenger Center mounting location, cut along dotted lines



(Fig 6) Passenger Rear Mounting Location



(Fig 7) Passenger Rear mounting location cut along dotted lines

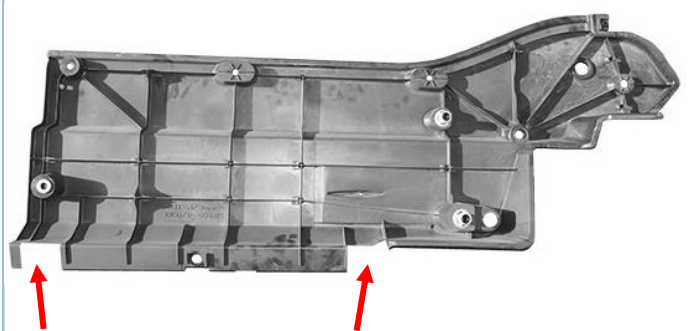
## STEP 4

Cut each plastic cover along the marked lines to allow clearance for the mounting brackets (**Fig. 8-9**).

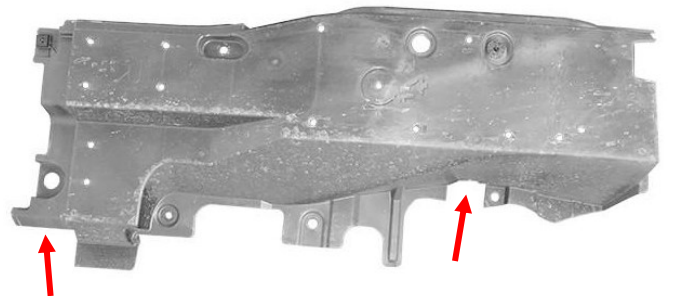
**IMPORTANT:** The covers must be cut to provide adequate space for the brackets. Ensure the plastic covers are trimmed enough to allow the mounting brackets to sit flush against the vehicle body.

Remove any rubber sealant that may interfere with the bracket installation (**Fig. 10**).

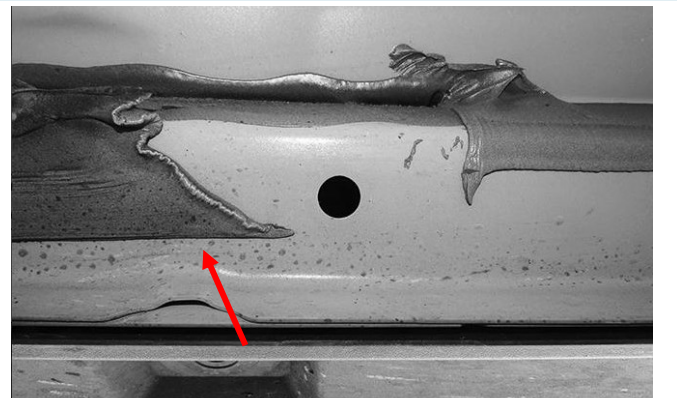
Reattach the trimmed plastic covers.



(Fig 8) Passenger Front Cover with cuts



(Fig 9) Passenger Rear Cover with cuts

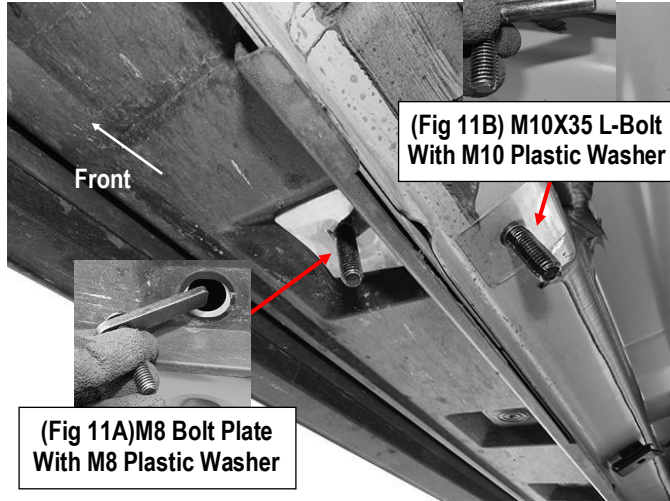


(Fig 10) Trim rubber sealing to allow bracket to mount against the body

## STEP 5

Move to the Passenger Front mounting location. Select (1) M8 Bolt Plate. Insert the Bolt Plate into the hole in the outer rocker panel, (**Fig 11A**). Slide (1) M8 Plastic Washer onto the threads of the bolt plate to hold the bolt in position, (**Fig 11B**).

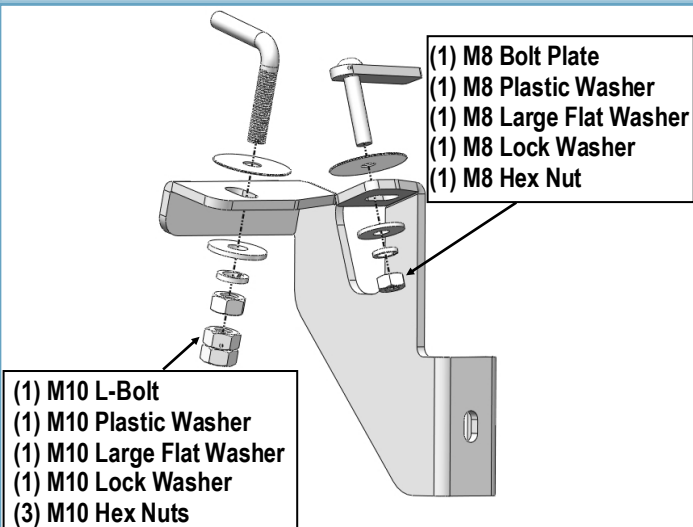




(Fig 11B) M8 Bolt Plate & M10 L-Bolt Installed into Passenger Front Mounting Holes

## STEP 6

Attach the Passenger Front Mounting Bracket (PFM) to the installed M8 Bolt Plate and M10 L-Bolt using (1) M8 large flat washer, (1) M8 lock washer, (1) M8 hex nut, (1) M10 large flat washer, (1) M10 lock washer, and (3) M10 hex nuts (Fig. 12). Note: Use **two wrenches**—one to hold the lower two nuts (to prevent rotation) and the other to tighten the top nut, securing all three nuts on the L-shaped bolt.



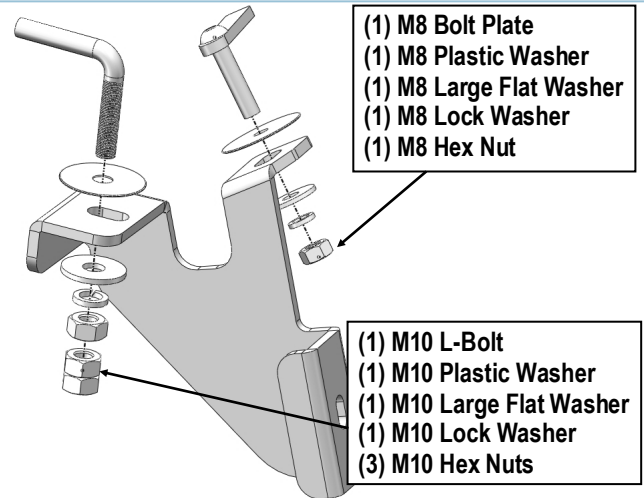
(Fig 12) Passenger Front Mounting Brackets Installation

## STEP 7

Move to Passenger Center Mounting Location. Repeat **Step 5** to install M8 Bolt Plate and M10 L-Bolt (Fig 13). Repeat **Step 6** to install Passenger Center Mounting Bracket (Fig 14).



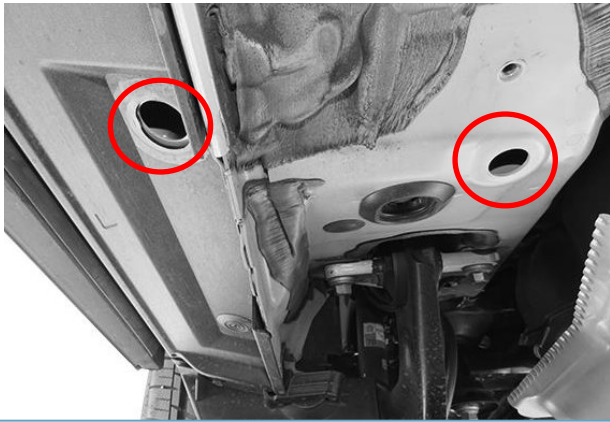
(Fig 13) M8 Bolt Plate & M10 L-Bolt Installed into Passenger Center Mounting Holes



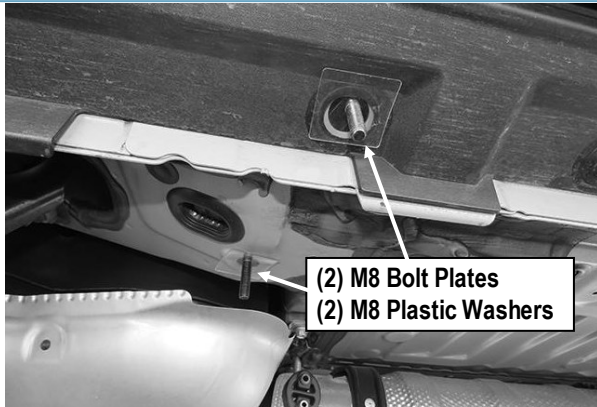
(Fig 14) Passenger Center Mounting Brackets Installation

## STEP 8

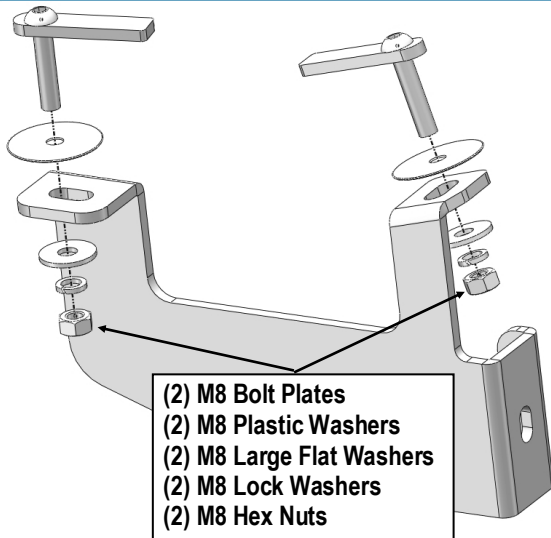
Move to the Passenger Rear mounting location, (Fig 15). Insert (2) M8 Bolt Plates into the outer hole in the outer rocker panel and the inner hole in the inner floor panel. Slide (2) M8 Plastic Washers to hold the bolt plate in place, (Fig 16). Select the Passenger Rear Mounting Bracket. Attach the bracket to the Bolt Plates with (2) M8 Large Flat Washers, (2) M8 Lock Washers and (2) M8 Hex Nuts, (Fig 17).



(Fig 15) Passenger Rear Mounting Location



(Fig 16) M8 Bolt Plates Installed into Passenger Rear Mounting Holes



(Fig 17) M8 Bolt Plates Installed into Passenger Rear Mounting Holes

## STEP 9

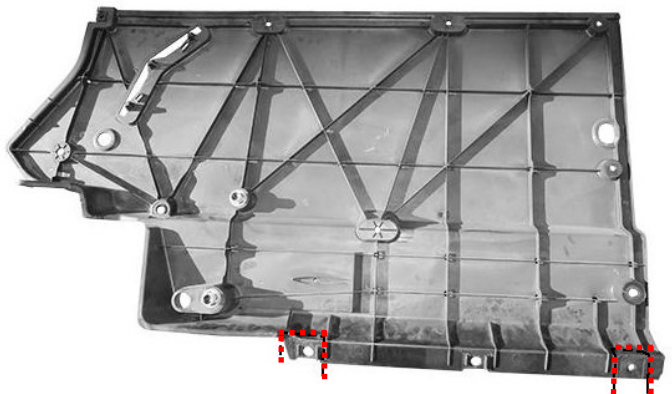
Once all (3) passenger side mounting brackets are installed, select and attach the Driver Side Step Bar onto the Mounting Brackets with (3) U Brackets, (3) M8X1.25-55mm Carriage Bolts, (3) M8 Large Flat Washers, (3) M8 Lock Washers and (3) M8X1.25 Hex Nuts (**Fig 18**). Do not fully tighten hardware at this time.

Properly level and adjust the Step Bar and fully tighten all hardware.

Repeat **Steps 1-9** for the other side Step Bar installation. Cut the Driver side Plastic Cover, (**Figs 19-21**). **The installation is completed!!!**

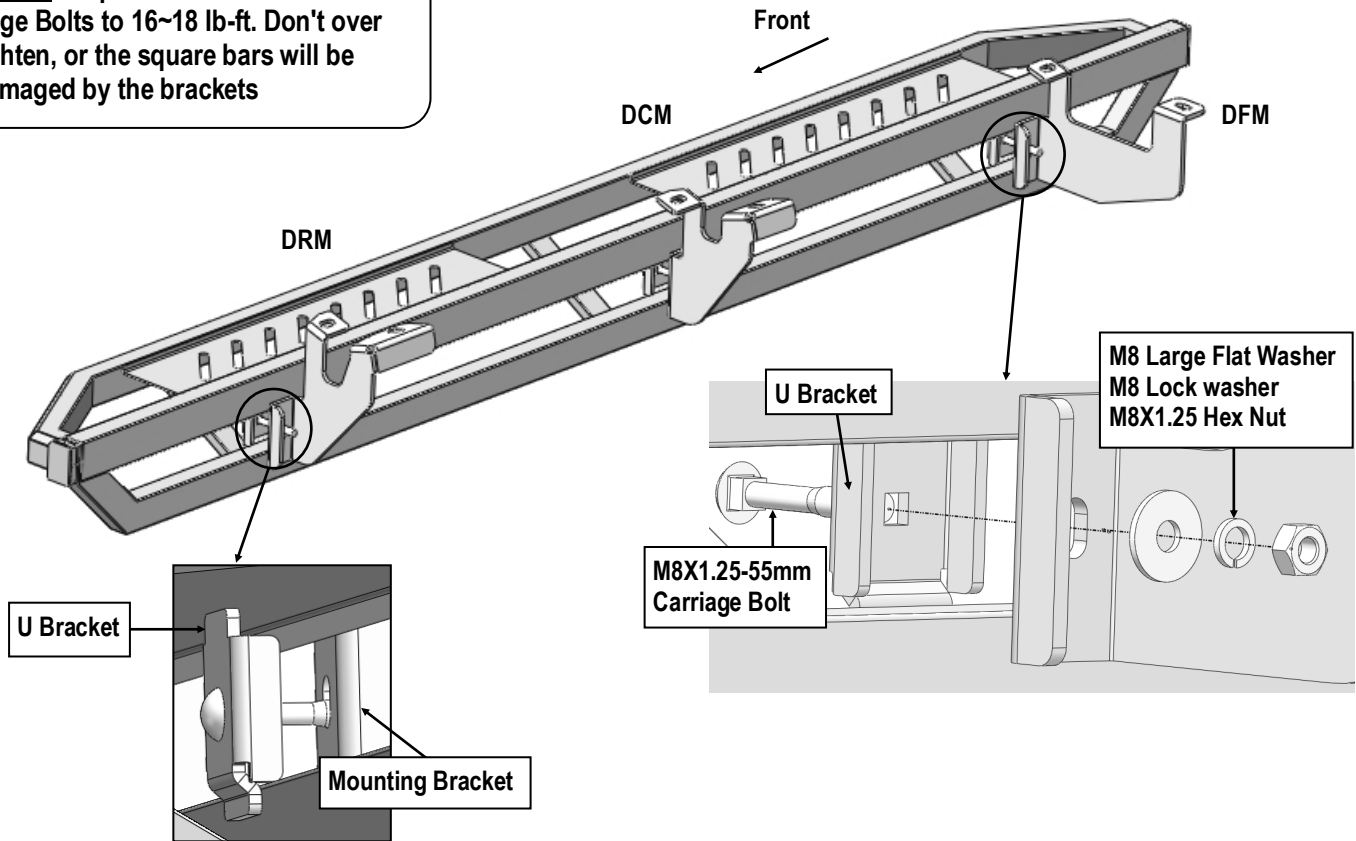


(Fig 19) Remove Plastic Cover



(Fig 20) Driver Front Cover Cut lines

**NOTE:** Torque all M8 X1.25-55mm Carriage Bolts to 16~18 lb.-ft. Don't over tighten, or the square bars will be damaged by the brackets

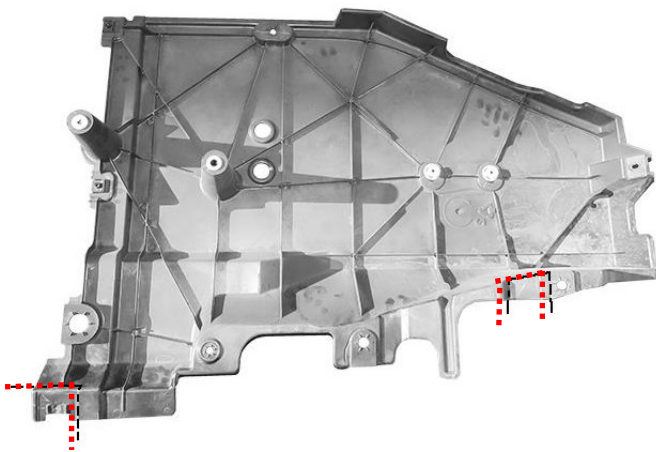


(Fig 18) Passenger Side Step Bar Installation

### Attention

Do periodic inspections to the installation to make sure that all hardware is secure and tight.

In order to protect your bars/boards, please use mild soap/non-abrasive products for cleaning only.



(Fig 21) Driver Rear Underside Cover Cut lines