

IARMOR EDGE™

PART#: IA-N098

BEFORE INSTALLATION

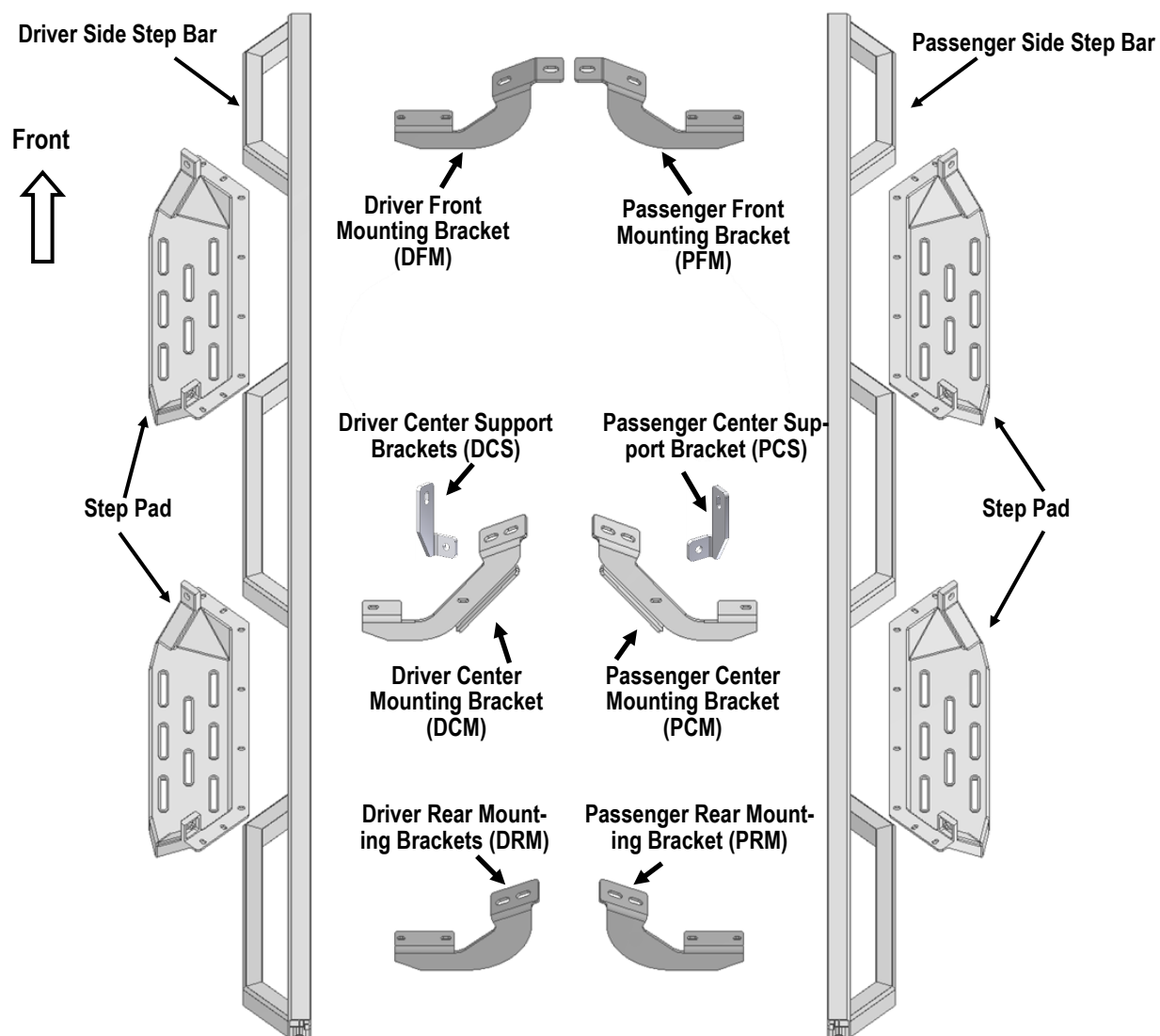
REMOVE CONTENTS FROM BOX. VERIFY ALL PARTS ARE PRESENT. READ INSTRUCTIONS CAREFULLY BEFORE STARTING INSTALLATION. ASSISTANCE IS RECOMMENDED. THANK YOU FOR CHOOSING OUR PRODUCT!

***DRILLING NOT REQUIRED**

***TRIMMING NOT REQUIRED**

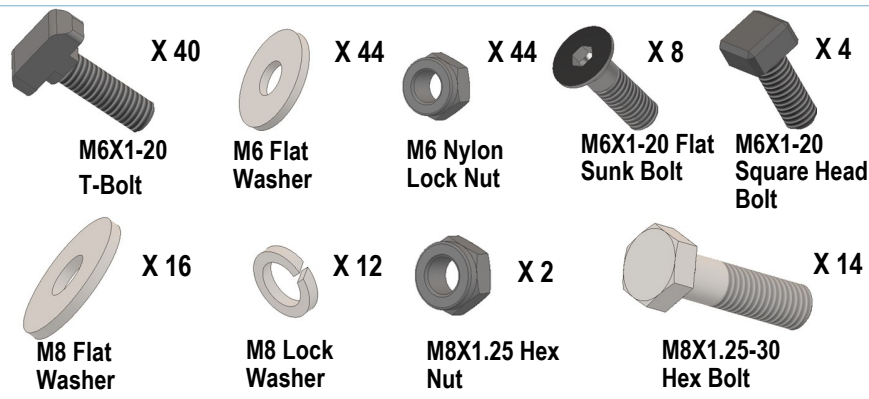
Torque Value

Fastener Size	Tightening Torque (ft-lbs)
6mm	6-7
8mm	16-18
10mm	31-32
12mm	56-58
14mm	92-94



Customer Support: info@iarmorauto.com

iArmor®



The instruction here is for your reference only. We strongly recommend the professional installer for best result. We are not responsible for any damage caused by the installation.

STEP 1

Install the Step Pads onto the step bars with (32) M6X1-20 T-Bolts, (32) M6 Flat Washers, (32) M6 Nylon Lock Nuts and (8) M6X1-20 Flat Sunk Head Bolts.

IMPORTANT: Don't hit the step pad by any metal hammer within step pad installation, or the step pad will be damaged.

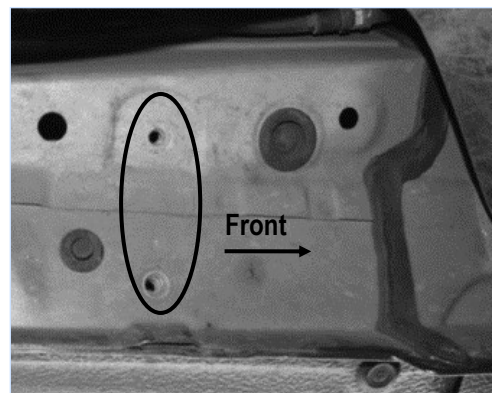
(8) M6X1-20 T-Bolts
(8) M6 Flat Washers
(8) M6 Nylon Lock Nuts



M6X1-20 Flat Sunk Head Bolt Location

STEP 2

Starting on the driver side front of the vehicle, remove the plastic plugs or hex bolts covering the (2) threaded holes in the body panel, (Fig 1).



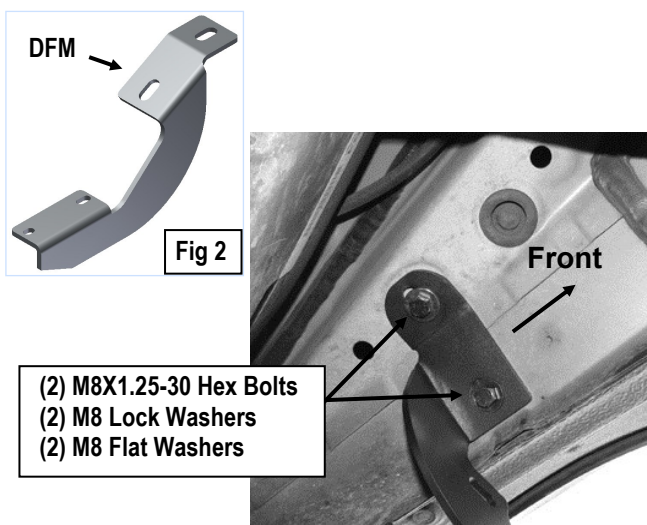
(Fig 1) Driver Side Front Mounting Location

Customer Support: info@iarmorauto.com

iArmor®

STEP 3

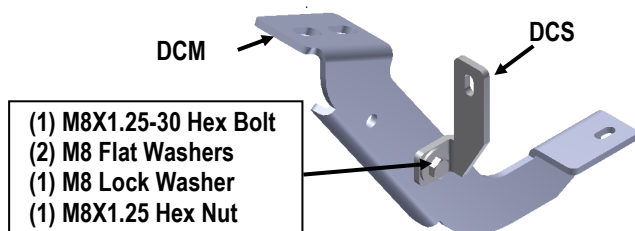
Select the Driver front Mounting Bracket (**DFM**), (**Fig 2**). Attach the Bracket to the vehicle using the included (2) M8X1.25-30 Hex Bolts, (2) M8 Lock Washers and (2) M8 Flat Washers, (**Fig 3**). Do not fully tighten hardware at this time.



(Fig 3) Driver Front Bracket Installed

STEP 4

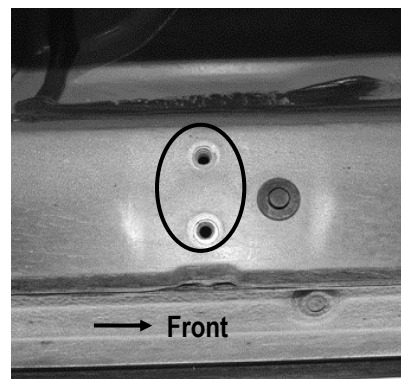
Assemble the Driver Center Mounting Bracket (**DCM**) and Driver Center Support Bracket (**DCS**) with (1) M8X1.25-30 Hex Bolt, (2) M8 Flat Washer, (1) M8 Lock Washer and (1) M8X1.25 Hex Nut, (**Fig 4**).



(Fig 4) Driver Center Mounting Bracket Assembly

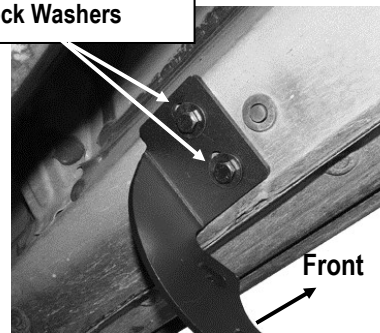
STEP 5

Move to the next mounting location; Install the Assembled Driver Center Mounting Bracket, with (2) M8X1.25-30 Hex Bolt, (2) M8 Flat Washer and (2) M8 Lock Washer, (**Fig 5 & 6**).



(Fig 5) Driver Side Center Mounting Location

(2) M8X1.25-30 Hex Bolts
(2) M8 Flat Washers
(2) M8 Lock Washers

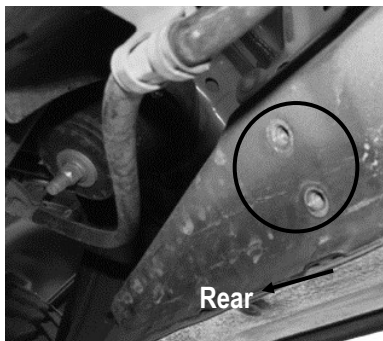


(Fig 6) Driver Center Mounting Bracket Installed

STEP 6

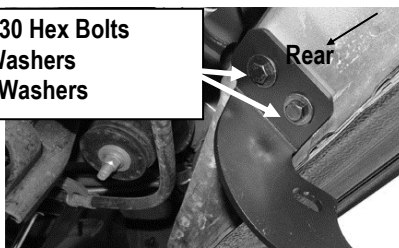
Continue to the last mounting location at the back of the cab, (**Fig 7**). Repeat **Step 5** to install (1) Driver Rear Mounting Bracket (**DRM**), (**Fig 8**).

iArmor®



(Fig 7) Driver Side Rear Mounting Location

- (2) M8X1.25-30 Hex Bolts
- (2) M8 Flat Washers
- (2) M8 Lock Washers

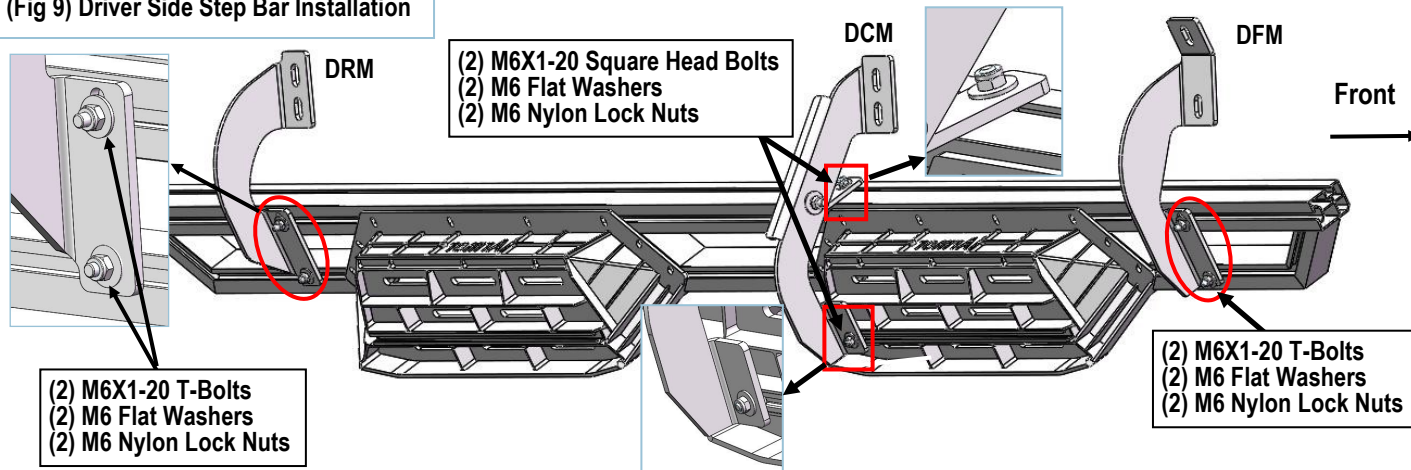


(Fig 8) Driver Rear Mounting Bracket Installed

STEP 7

Once all (3) Brackets have been fully installed, attach the Assembled Driver Step Bar onto the brackets with (4) M6X1-20 T-Bolts, (2) M6X1-20 Square Head Bolts, (6) M6 Flat Washers and (6) M6 Nylon Lock Nuts, (Fig 9). Do not tighten hardware at this time.

(Fig 9) Driver Side Step Bar Installation



STEP 8

Level and adjust the Assembled Step Bar as desired and tighten all hardware.

STEP 9

Repeat **Steps 2—8** for passenger side Assembled Step Bar installation.

STEP 10

Do periodic inspections to the installation to make sure that all hardware is secure and tight.

Attention

In order to protect your bars/boards, please use only mild soap/non-abrasive products for cleaning.