

# iArmor<sup>®</sup>

## IARMOR EDGE™

PART#: IA-N097

### BEFORE INSTALLATION

REMOVE CONTENTS FROM BOX. VERIFY ALL PARTS ARE PRESENT. READ INSTRUCTIONS CAREFULLY BEFORE STARTING INSTALLATION. ASSISTANCE IS RECOMMENDED. THANK YOU FOR CHOOSING OUR PRODUCT!

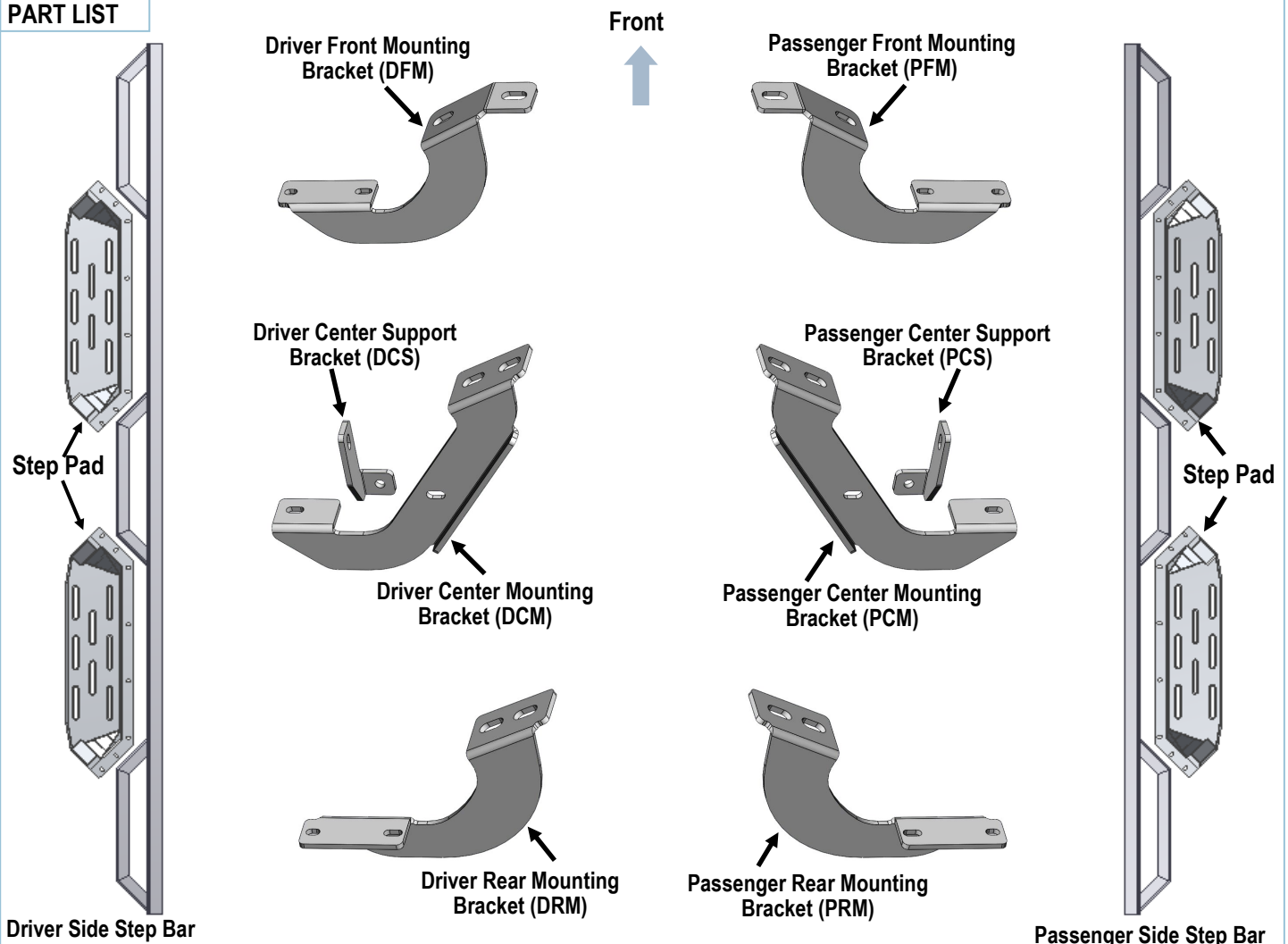
\*DRILLING NOT REQUIRED

\*TRIMMING NOT REQUIRED

### Torque Value

Fastener Size	Tightening Torque (ft-lbs)	Required
6mm	6-7	√
8mm	16-18	√
10mm	31-32	X
12mm	56-58	X
14mm	92-94	X

### PART LIST



Customer Support: [info@iarmorauto.com](mailto:info@iarmorauto.com)

# iArmor®



X14  
M8X1.25-30 Hex Bolt



X16  
M8 Large Flat Washer



X14  
M8 Lock Washer



X2  
M8X1.25 Hex Nut



X4  
M6X1-20 Square  
Head Bolt



X40  
M6X1-20 T-Bolt



X44  
M6 Large Flat Washer



X44  
M6X1 Nylon Lock Nut

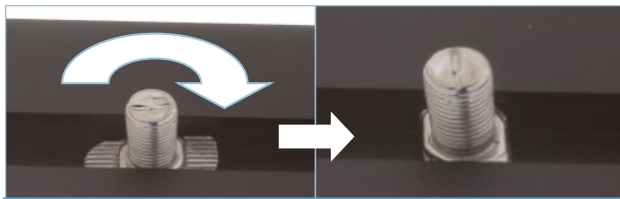
The instruction here is for your reference only. We strongly recommend the professional installer for best result. We are not responsible for any damage caused by the installation.

## STEP 1

Install the Step Pads onto the step bars with (32) M6X1-20 T-Bolts, (32) M6 Large Flat Washers and (32) M6X1 Nylon Lock Nuts.

**IMPORTANT:** Don't hit the step pad by any metal hammer within step pad installation, or the step pad will be damaged.

(8) M6X1-20 T-Bolts  
(8) M6 Flat Washers  
(8) M6 Nylon Lock Nuts

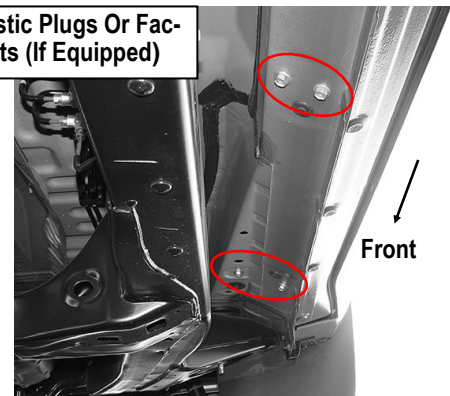


**Note: Rotate 90° after inserting the T-Bolts into the Channel!!!**

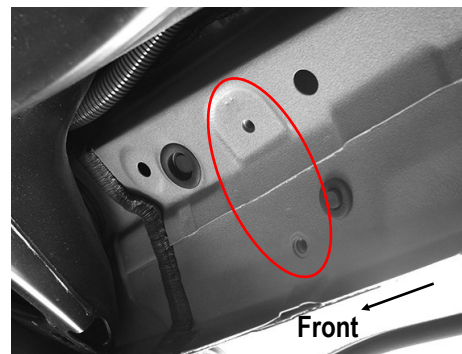
## STEP 2

Start on the passenger side front of the vehicle, remove the plastic plugs or hex bolts covering the (2) threaded holes in the body panel, (Figs 1 & 2).

Remove Plastic Plugs Or Factory Hex Bolts (If Equipped)



(Fig 1) Passenger Side Front & Center Mounting Location

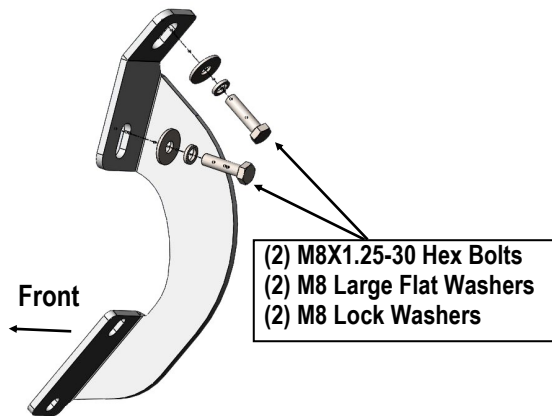


(Fig 2) Passenger Side Front Mounting Location

# iArmor®

## STEP 3

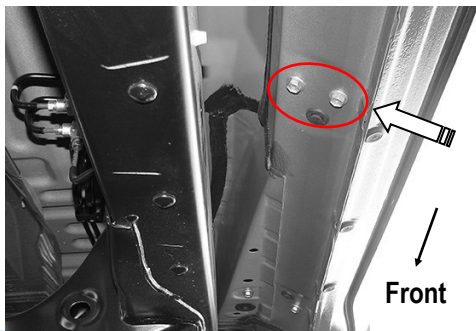
Select the Passenger Front Mounting Bracket (**PFM**). Attach the bracket to the vehicle using the included (2) M8X1.25-30 Hex Bolts, (2) M8 Lock Washers and (2) M8 Large Flat Washers, (**Fig 3**). Do not fully tighten hardware at this time.



(Fig 3) Passenger Front Mounting Bracket Installed

## STEP 4

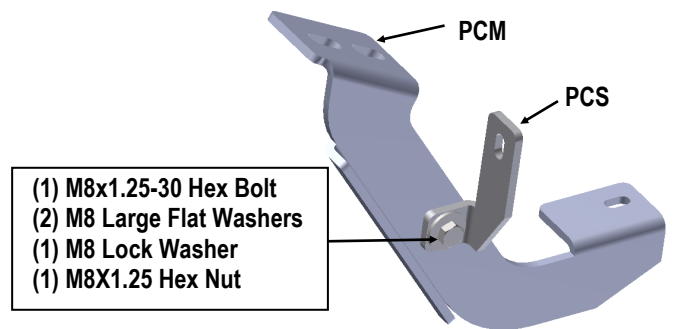
Move to passenger side center mounting location, (**Figs 1 & 4**). **NOTE:** The Tundra has (4) mounting locations along the bottom of the body. Installation will use the 1st, 2nd and 4th mounting locations only for the Mounting Brackets.



(Fig 4) Passenger Side Center Mounting Location

## STEP 5

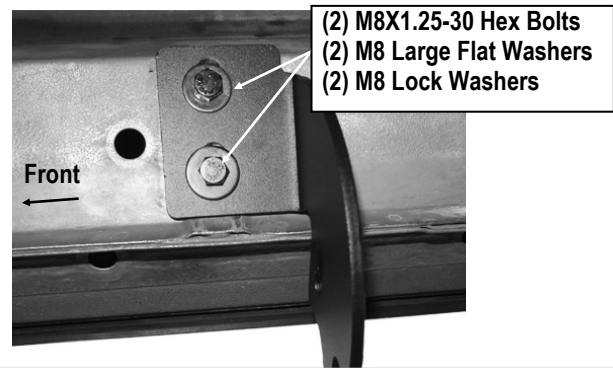
Assemble the Passenger Center Mounting Bracket (**PCM**) and Passenger Center Support Bracket (**PCS**) with (1) M8X1.25-30 Hex Bolt, (2) M8 Large Flat Washers, (1) M8 Lock Washer and (1) M8X1.25 Hex Nut, (**Fig 5**). Do not fully tighten at this time.



(Fig 5) Passenger Center Mounting Bracket Assembly

## STEP 6

Install the Passenger Center Mounting Bracket on the vehicle with (2) M8X1.25-30 Hex Bolts, (2) M8 Lock Washers and (2) M8 Large Flat Washers, (**Fig 6**). Do not fully tighten at this time.

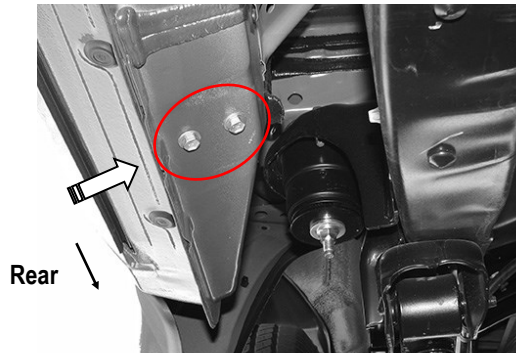


(Fig 6) Passenger Center Bracket Installed

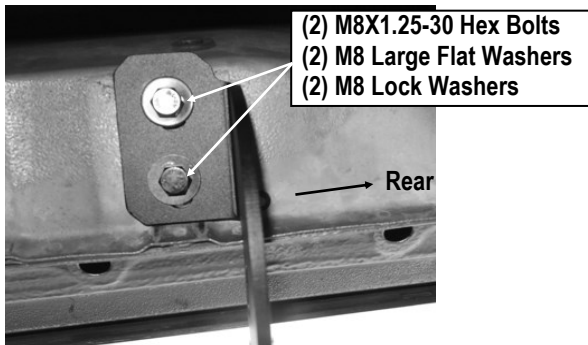
# iArmor®

## STEP 7

Continue to the last mounting location at the back of the cab, **(Fig 7)**. Repeat **Step 3** to install the Passenger Side Rear Bracket with (2) M8X1.25-30 Hex Bolts, (2) M8 Lock Washers and (2) M8 Large Flat Washers, **(Fig 8)**.



**(Fig 7) Passenger Side Rear Mounting Location**



**(Fig 8) Passenger Rear Mounting Bracket Installed**

## STEP 8

Once all (3) Brackets have been fully installed, attach the Assembled Passenger Side Step Bar onto the brackets with (4) M6X1-20 T-Bolts, (2) M6X1-20 Square Head Bolts, (6) M6 Large Flat Washers and (6) M6X1 Nylon Lock Nuts, **(Fig 9)**. Do not fully tighten hardware at this time.

## STEP 9

Properly level and adjust the Step Bar and fully tighten all hardware.

## STEP 10

Move to the Driver side of the vehicle. Repeat **Steps 2-9** for the Driver Side Step Bar installation.

### Attention

Do periodic inspections to the installation to make sure that all hardware is secure and tight.

In order to protect your bars/boards, please use only mild soap/non-abrasive products for cleaning.

# iArmor®

(Fig 9) Passenger Side Step Bar Installation

