

iArmor®

IARMOR EDGE™

PART#: IA-N058H

BEFORE INSTALLATION

REMOVE CONTENTS FROM BOX. VERIFY ALL PARTS ARE PRESENT. READ INSTRUCTIONS CAREFULLY BEFORE STARTING INSTALLATION. ASSISTANCE IS RECOMMENDED. THANK YOU FOR CHOOSING OUR PRODUCT!

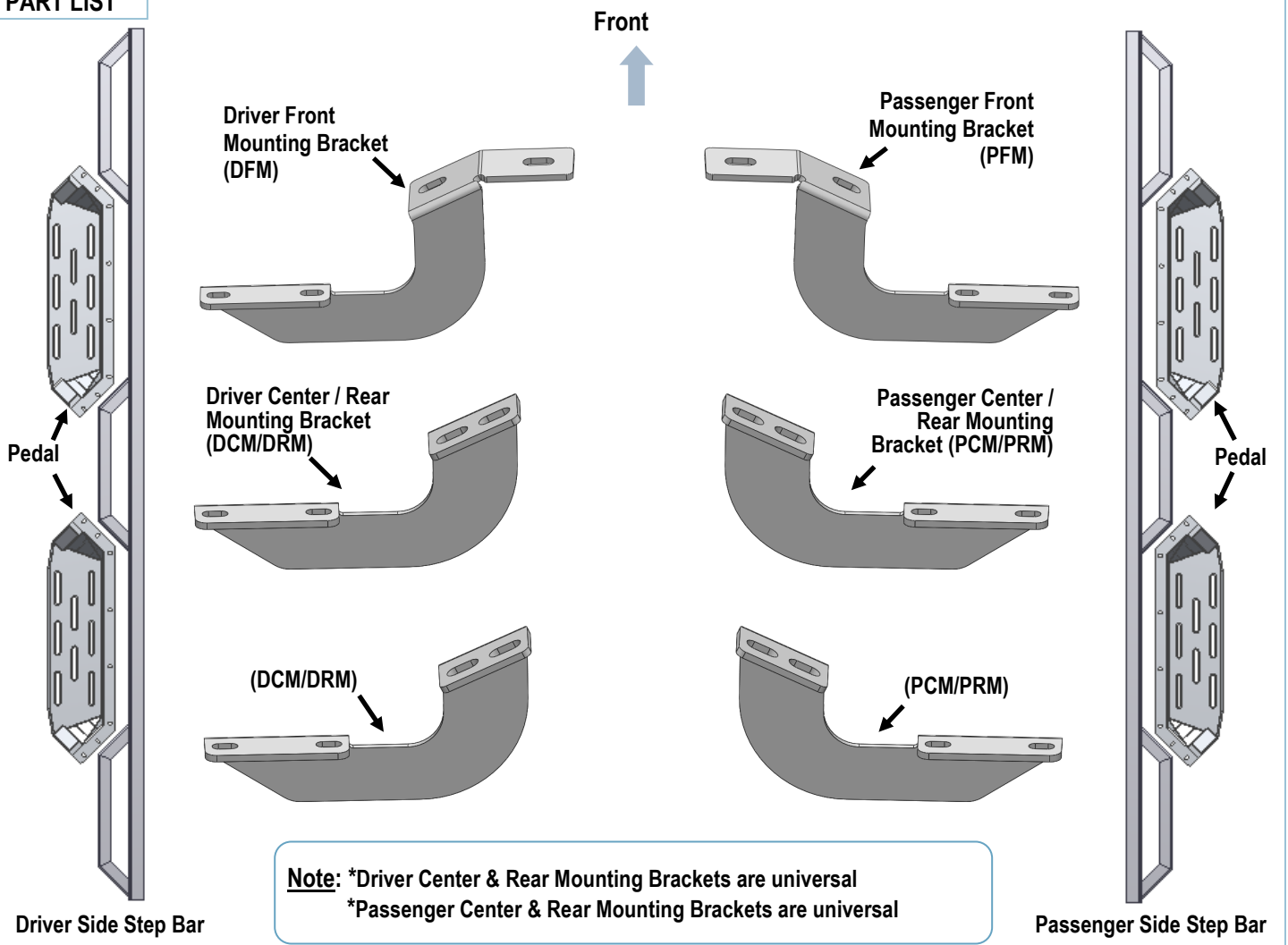
*ROCKER PANEL MOUNT

*DRILLING/TRIMMING NOT REQUIRED

Torque Value

Fastener Size	Tightening Torque (ft-lbs)	Required
6mm	6-7	X
8mm	16-18	√
10mm	31-32	X
12mm	56-58	X
14mm	92-94	X

PART LIST

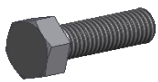


Customer Support: info@iarmorauto.com

iArmor®

Hardware Package A (For Brackets & Bars Installation)

Item	QTY	Description	Item	QTY	Description
1#	12	M8X1.25-30 Hex Bolts	4#	12	M8X1.25-20 T Bolt
2#	24	M8 Large Flat Washers	5#	12	M8 Plastic Washers
3#	12	M8 Lock Washers	6#	12	M8X1.25 Nylon Lock Nuts



1#



2#



3#



4#



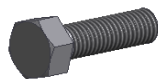
5#



6#

Hardware Package B (For Step Pedals Installation)

Item	QTY	Description	Item	QTY	Description
1#	24	M8X1.25-30 Hex Bolts	3#	24	M8 Lock Washers
2#	24	M8 Large Flat Washers			



1#



2#



3#

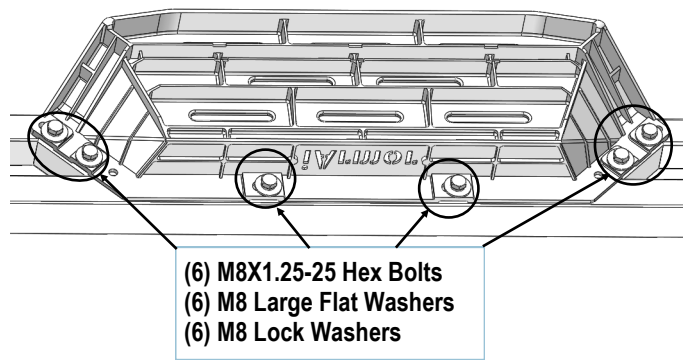
iArmor[®]

The instruction here is for your reference only. We strongly recommend the professional installer for best result. We are not responsible for any damage caused by the installation.

STEP 1

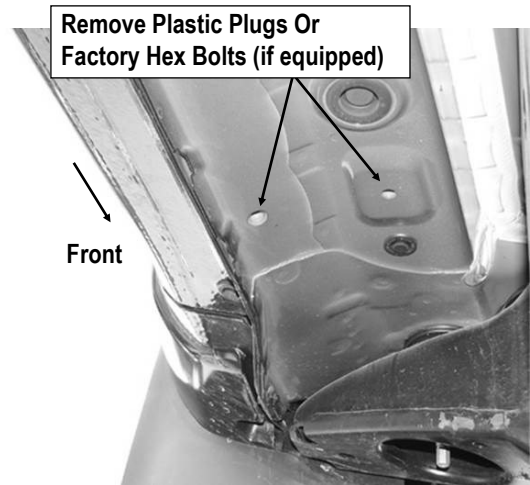
Install (4) Pedals onto the step bars with (24) M8X1.25-25mm Hex Bolts, (24) M8 Large Flat Washers and (24) M8 Lock Washers.

IMPORTANT: Don't hit the pedal with any metal hammer within pedal installation, or the pedal will be damaged.



STEP 2

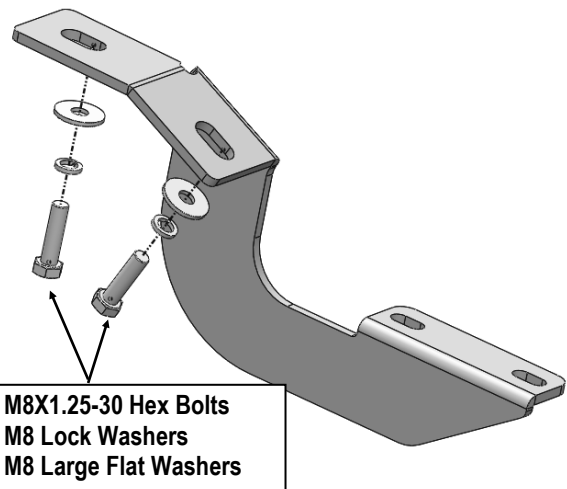
Start installation on the driver side front of the vehicle, remove the existing (2) factory bolts, (or plastic plugs) if equipped, (Fig 1). This will be the mounting location for the Driver Front Mounting Bracket.



(Fig 1) Driver Side Front Mounting Location

STEP 3

Select the Driver Front Mounting Bracket (DFM). Attach the Bracket to the vehicle using the included (2) M8X1.25-30 Hex Bolts, (2) M8 Lock Washers and (2) M8 Large Flat Washers, (Fig 2). Do not fully tighten hardware at this time.

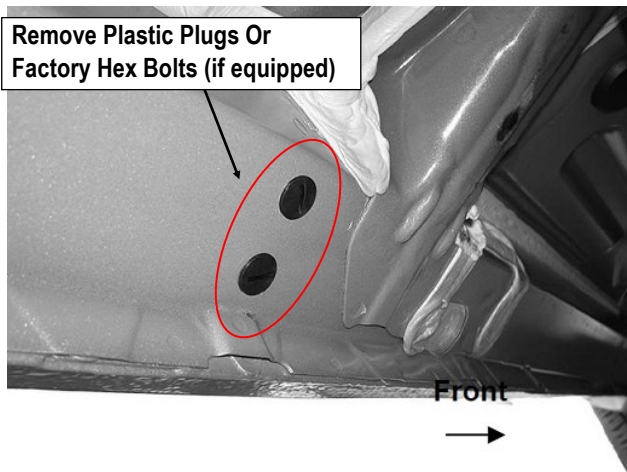


(Fig 2) Driver Front Mounting Bracket Installation

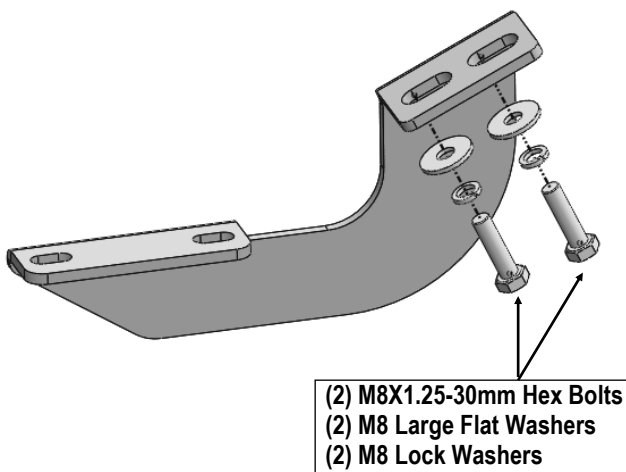
iArmor®

STEP 4

Move to the Driver Side Center and Rear Mounting Locations, (Fig 3). Repeat **Steps 2—3** to install the Driver Center & Rear Mounting Brackets (DCM/DRM), (Fig 4).



(Fig 3) Driver Side Center/Rear Mounting Locations (Example)

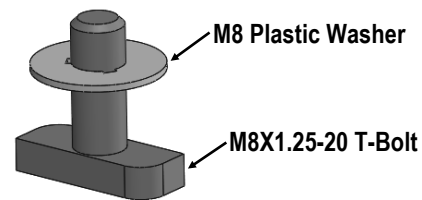


(Fig 4) Driver Center/ Rear Mounting Bracket Installation

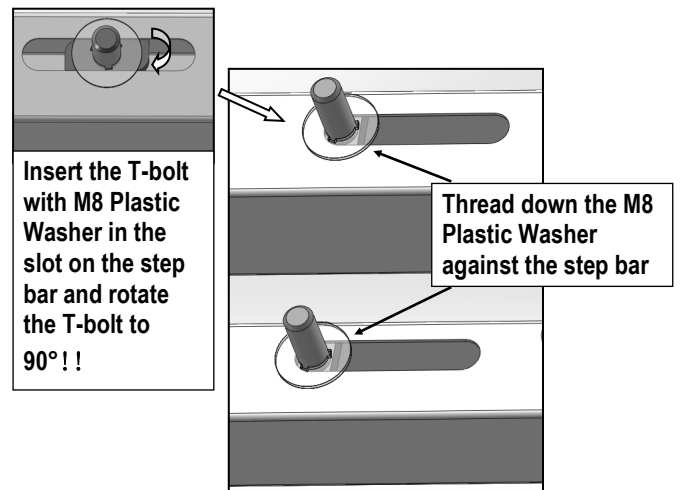
STEP 5

Once (3) brackets have been installed, select (6) M8X1.25-20mm T-Bolts, thread (1) M8 Plastic Washer on each T-Bolt, (Fig 5). Install the (6) M8X1.25-20mm T-Bolts with plastic washers in the slots on the assembled Driver side step bar. Rotate the T-Bolts to 90 degree, thread down the M8 Plastic Washers against the step bar (Fig 6).

NOTE: The Plastic Washer is designed to keep the T-Bolt from falling into the bar tube during installation.



(Fig 5) Thread (1) M8 Plastic Washer on each T-Bolt Before Inserting to the bar tube!!!



(Fig 6) T-Bolt with plastic washer in the slot

iArmor®

STEP 6

Attach the Assembled Driver Side Step Bar onto the Mounting Brackets with (6) M8 Plastic Washers, (6) M8X1.25-20mm T-Bolts, (6) M8 Large Flat Washers, (6) M8 Nylon Lock Nuts, (Fig 7). Do not fully tighten hardware at this time.

STEP 7

Level and adjust the assembled Step Bar properly and tighten all hardware.

Move to the other side of the vehicle. Repeat **Steps 2-6** for the other side step bar installation.

Attention

Do periodic inspections to the installation to make sure that all hardware is secure and tight.

In order to protect your bars/boards, please use mild soap/non-abrasive products for cleaning only.

(Fig 7) Driver Side Step Bar Installation

