

**PART#: IA-N291H**

**iArmor® Series**

### BEFORE INSTALLATION

REMOVE CONTENTS FROM BOX. VERIFY ALL PARTS ARE PRESENT. READ INSTRUCTIONS CAREFULLY BEFORE STARTING INSTALLATION. ASSISTANCE IS RECOMMENDED. THANK YOU FOR CHOOSING OUR PRODUCT!

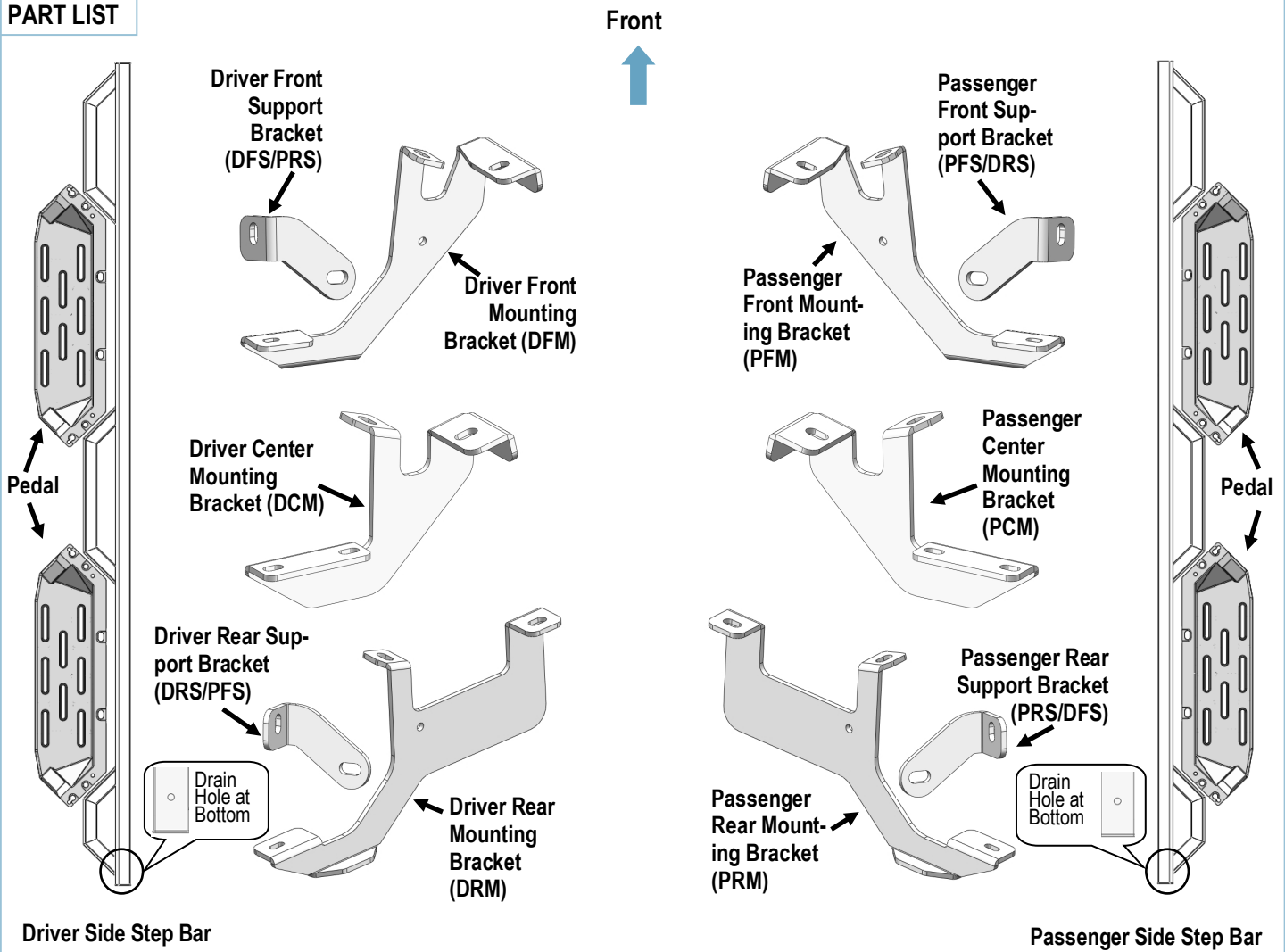
**\*ROCKER PANEL MOUNT**

**\*CUTTING REQUIRED/ NO DRILLING REQUIRED**

### Torque Value

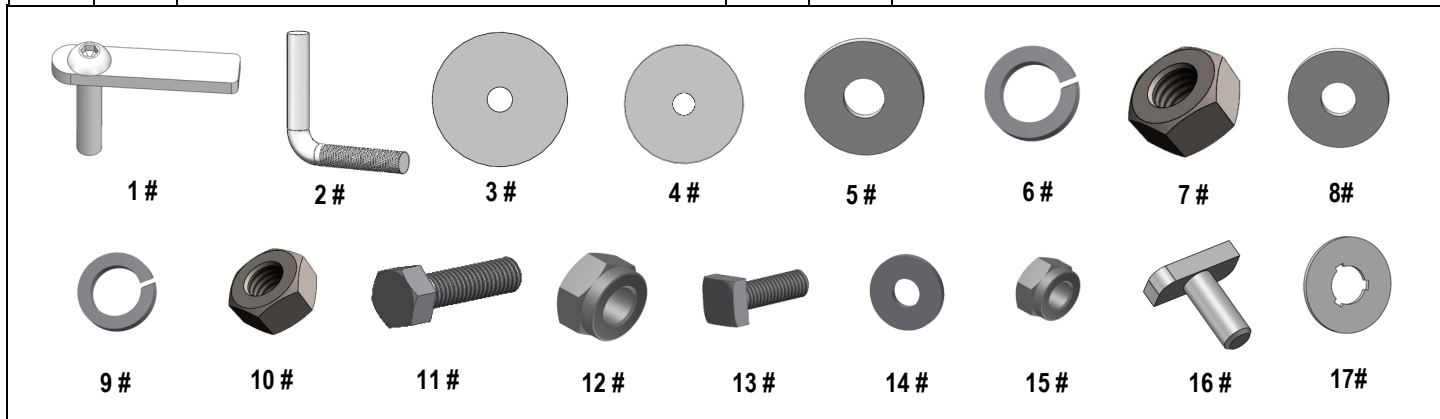
Fastener Size	Tightening Torque (ft-lbs)	Required
6mm	6-7	√
8mm	16-18	√
10mm	31-32	√
12mm	56-58	X
14mm	92-94	X

### PART LIST




Customer Support: [info@iarmorauto.com](mailto:info@iarmorauto.com)

Hardware Package A (For Brackets & Bars Installation)					
Item	QTY	Description	Item	QTY	Description
1#	8	M8X40 Bolt Plates	10#	8	M8X1.25 Hex Nuts
2#	4	M10 L-Shaped Bolts	11#	4	M8X1.25-30 Hex Bolts
3#	4	M10 Plastic Washers	12#	12	M8 Nylon Lock Nuts
4#	8	M8 Plastic Washers	13#	4	M6X1-20 Square Head Bolts
5#	4	M10 Large Flat Washers	14#	4	M6 Large Flat Washers
6#	4	M10 Lock Washers	15#	4	M6X1 Nylon Lock Nuts
7#	12	M10X1.5 Hex Nuts	16#	8	M8X1.25-20 T Bolts
8#	24	M8 Large Flat Washers	17#	8	M8 Plastic Washers
9#	8	M8 Lock Washers			



Hardware Package B (For Step Pedals Installation)					
Item	QTY	Description	Item	QTY	Description
1#	24	M8X1.25-25 Hex Bolts	3#	24	M8 Lock Washers
2#	24	M8 Large Flat Washers			



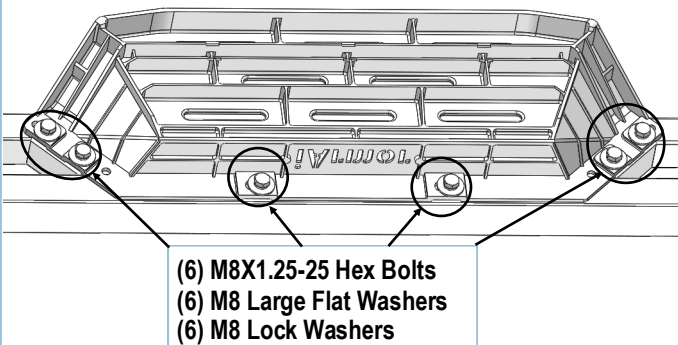
1#                      2#                      3#

The instruction here is for your reference only. We strongly recommend the professional installer for best result. We are not responsible for any damage caused by the installation.

## STEP 1

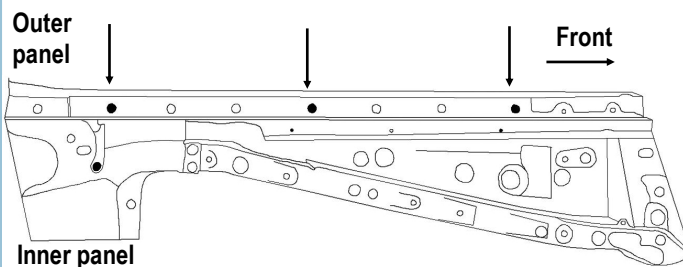
Install (4) Pedals onto the step bars with (24) M8X1.25-25mm Hex Bolts, (24) M8 Large Flat Washers and (24) M8 Lock Washers.

**IMPORTANT:** Don't punch the pedal with any metal hammer within pedal installation, or the pedal will be damaged.

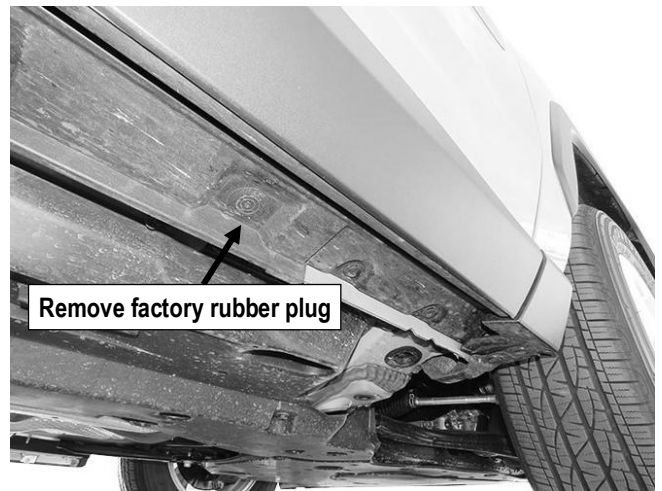


## STEP 2

Start installation from the passenger side front of the vehicle. Locate the Passenger Front mounting location and remove the factory round rubber plugs in the bottom of the outer rocker panel, (Fig 1-2).



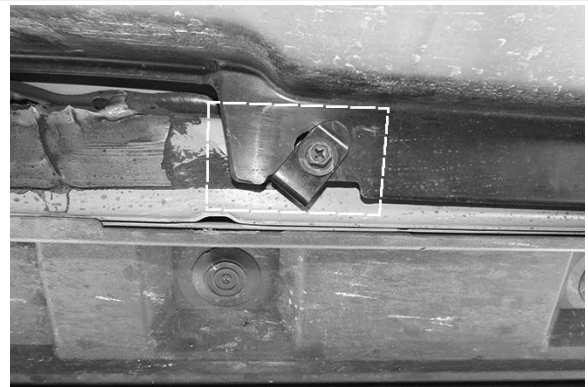
(Fig 1) Passenger Rocker Panel and Floor Panel



(Fig 2) Passenger Side Front Mounting Location

## STEP 3

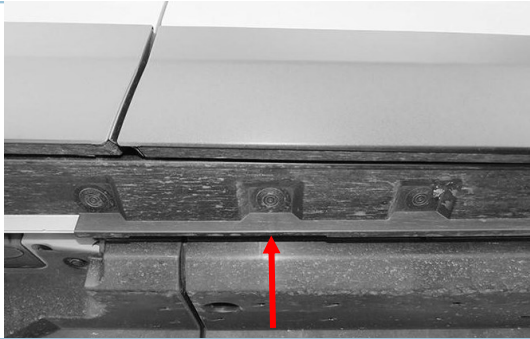
Select the Passenger Front Mounting Bracket (PFM). Hold the bracket against the mounting location and trace its outline onto the plastic cover where the top of the Passenger Front Mounting Bracket touches (Fig. 3).



(Fig 3) Passenger Front mounting location-cut along dotted lines

## STEP 4

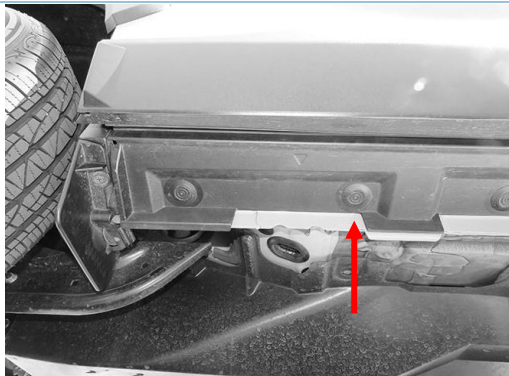
Move to the center & rear mounting location. Repeat Step 3 to mark the Passenger Center & Rear plastic covers, (Figs 4-7). Remove the plastic covers.



(Fig 4) Passenger Center mounting location



(Fig 5) Passenger Center mounting location  
(cut along dotted lines)



(Fig 6) Passenger Rear Mounting Location



(Fig 7) Passenger Rear mounting location-cut along dotted lines

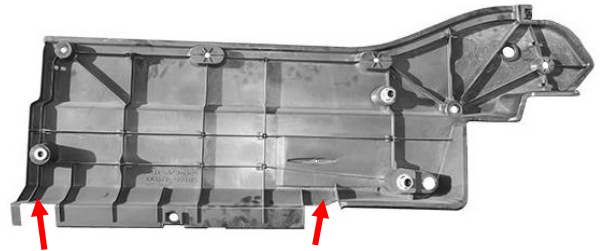
## STEP 5

Cut each plastic cover along the marked lines to allow clearance for the mounting brackets (**Fig. 8-9**).

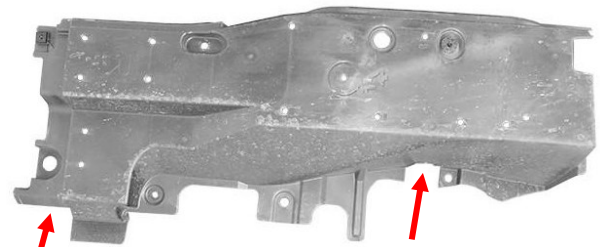
**IMPORTANT:** The covers must be cut to provide adequate space for the brackets. Ensure the plastic covers are trimmed enough to allow the mounting brackets to sit flush against the vehicle body.

Remove any rubber sealant that may interfere with the bracket installation (**Fig. 10**).

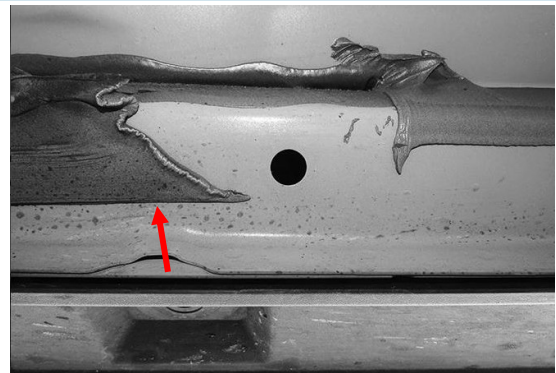
Reattach the trimmed plastic covers.



(Fig 8) Passenger Front Cover with cuts



(Fig 9) Passenger Rear Cover with cuts

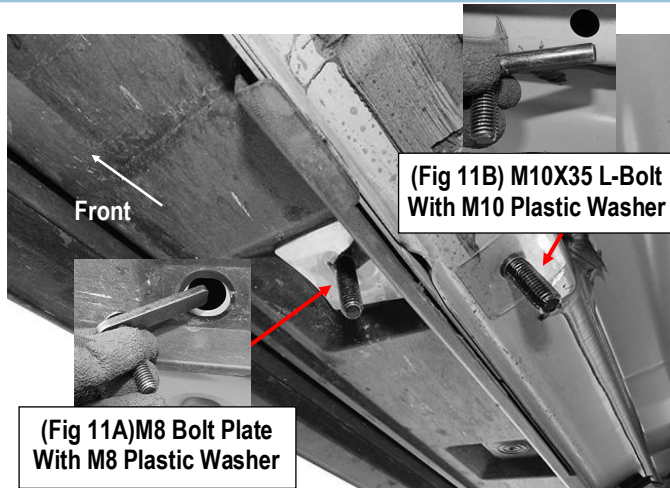


(Fig 10) Trim rubber sealing to allow bracket to mount against the body



## STEP 6

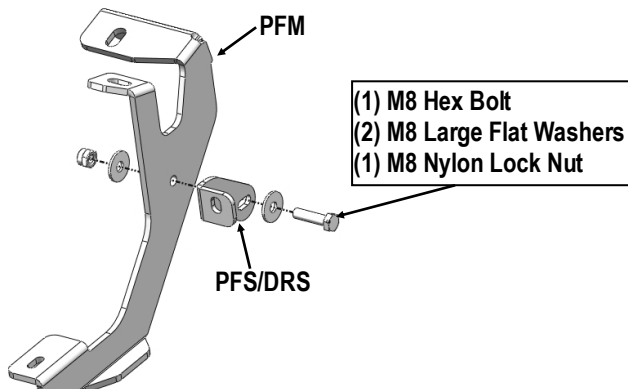
Move to the Passenger Front mounting location. Select (1) M8 Bolt Plate. Insert the Bolt Plate into the hole in the outer rocker panel, **(Fig 11A)**. Slide (1) M8 Plastic Washer onto the threads of the bolt plate to hold the bolt in position, **(Fig 11B)**.



**(Fig 11B) M8 Bolt Plate & M10 L-Bolt Installed into Passenger Front Mounting Holes**

## STEP 7

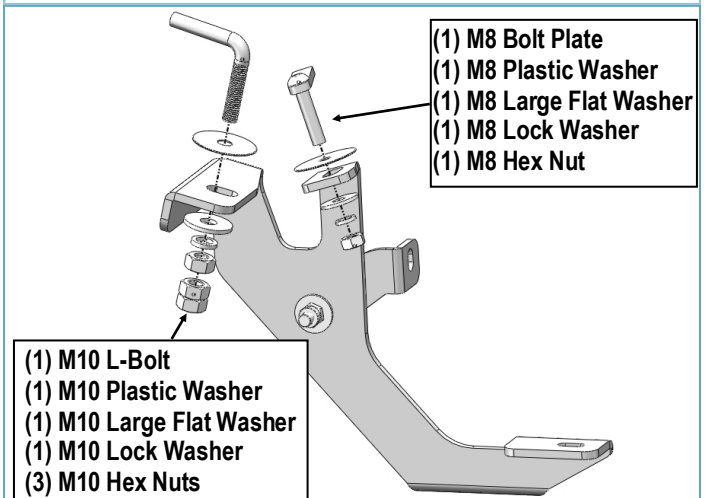
Select Passenger Front Mounting Bracket (**PFM**) and Passenger Front/Driver Rear Support Bracket (**PFS/DRS**), assemble them with (1) M8X1.25-30mm Hex Bolt, (2) M8 Large Flat Washers, (1) M8 Nylon Lock Nut, **(Fig 12)**. Don't fully tighten hardware at this time.



**(Fig 12) Passenger Front Mounting Bracket Assembly**

## STEP 8

Attach the Passenger Front Mounting Bracket (**PFM**) to the installed M8 Bolt Plate and M10 L-Bolt using (1) M8 large flat washer, (1) M8 lock washer, (1) M8 hex nut, (1) M10 large flat washer, (1) M10 lock washer, and (3) M10 hex nuts **(Fig. 13)**. Note: Use **two wrenches**—one to hold the lower two nuts (to prevent rotation) and the other to tighten the top nut, securing all three nuts on the L-shaped bolt.



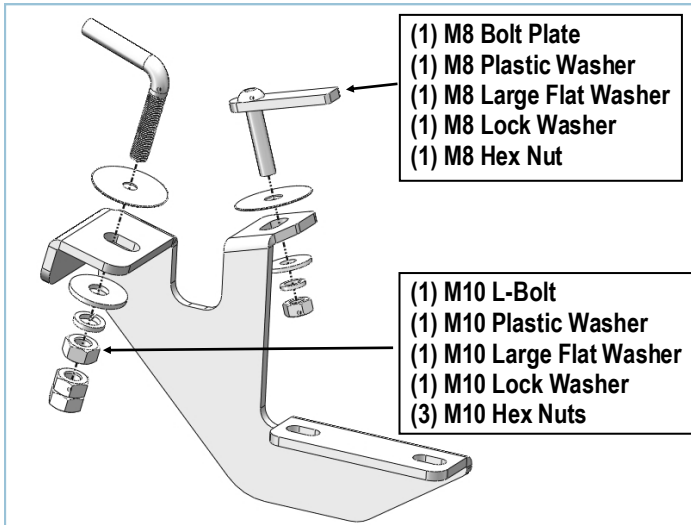
**(Fig 13) Passenger Front Mounting Brackets Installation**

## STEP 9

Move to Passenger Center Mounting Location. Repeat **Step 6** to install M8 Bolt Plate and M10 L-Bolt **(Fig 14)**. Repeat **Step 8** to install Passenger Center Mounting Bracket **(Fig 15)**.



**(Fig 14) M8 Bolt Plate & M10 L-Bolt Installed into Passenger Center Mounting Holes**



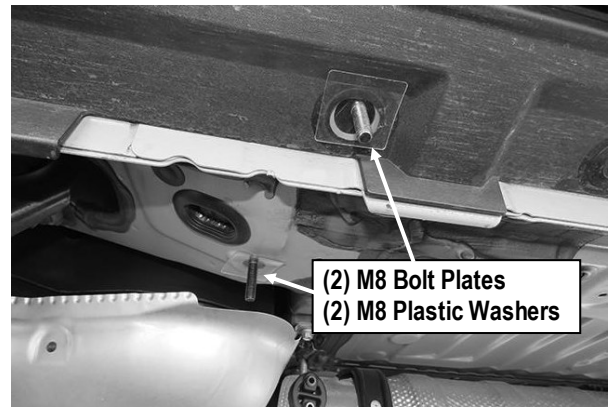
(Fig 15) Passenger Center Mounting Brackets Installation

## STEP 10

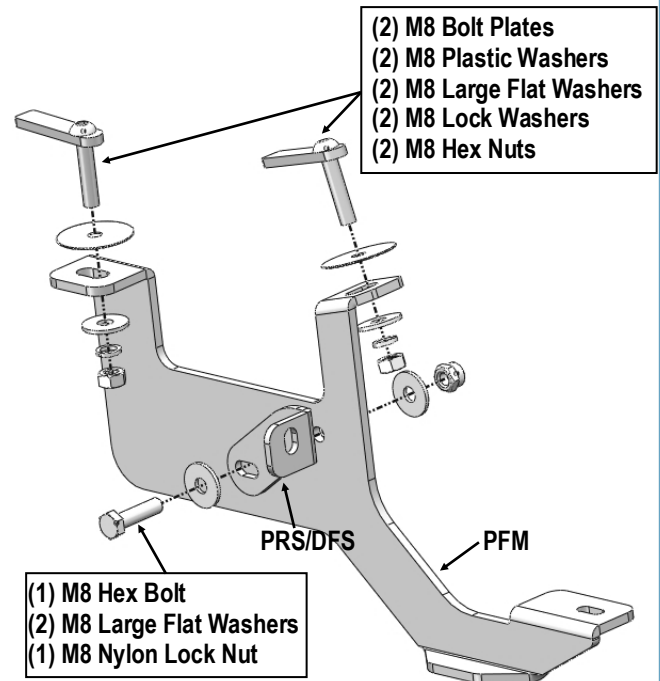
Move to the passenger rear mounting location (Fig. 16). Insert (2) M8 bolt plates into the outer hole of the outer rocker panel and the inner hole of the inner floor panel. Slide (2) M8 plastic washers onto the bolt plates to hold them in place (Fig. 17).

Select the passenger rear mounting brackets and assemble them using (1) M8x1.25-30mm hex bolt, (2) M8 large flat washers, and (1) M8 nylon lock nut (Fig. 18).

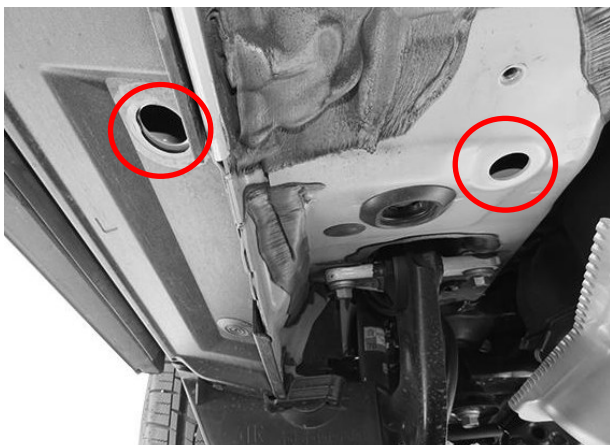
Attach the bracket to the bolt plates using (2) M8 large flat washers, (2) M8 lock washers, and (2) M8 hex nuts (Fig. 18). Do not fully tighten the hardware at this time.



(Fig 17) M8 Bolt Plates Installed in Passenger Rear Mounting Holes



(Fig 18) M8 Bolt Plates Installed in Passenger Rear Mounting Holes

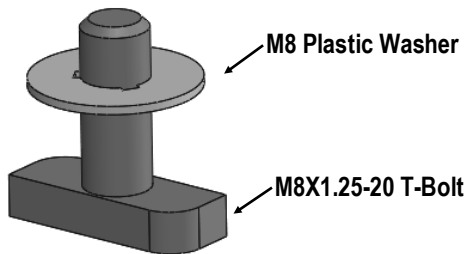


(Fig 16) Passenger Rear Mounting Location

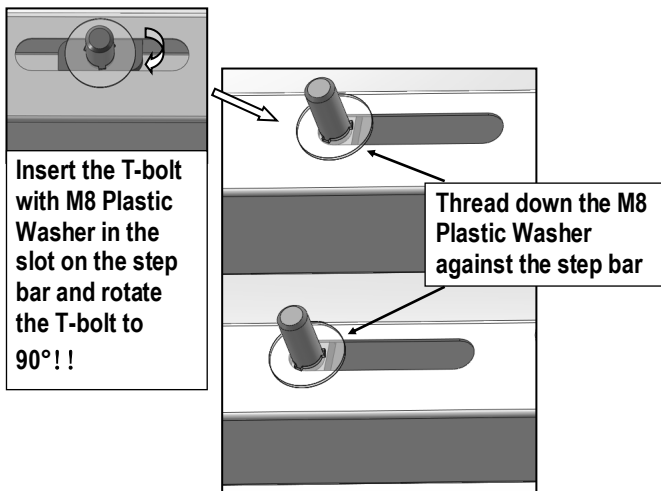
## STEP 11

Once all (3) brackets are installed, select four (4) M8X1.25-20mm T-bolts and thread one (1) M8 plastic washer onto each T-bolt (**Fig. 19**). Insert the four (4) M8x1.25-20mm T-bolts with plastic washers into the slots on the assembled passenger-side step bar. Rotate the T-bolts 90 degrees, then thread the M8 plastic washers down against the step bar (**Fig. 20**).

**NOTE:** The plastic washer is designed to hold the T-bolt in place and prevent it from falling into the tube during installation.



(Fig 19) Thread (1) M8 Plastic Washer on each T-Bolt Before Inserting into the slot !!!



(Fig 20) T-Bolt with plastic washer in the slot

## STEP 12

Attach the Assembled Passenger Side Step Bar onto the Mounting Brackets with (4) M8 Plastic Washers, (4) M8X1.25-20mm T-Bolts, (4) M8 Large Flat Washers, (4) M8 Nylon Lock Nuts, (**Fig 21**). Do not fully tighten hardware at this time.

**NOTE:** Driver Front and Rear Mounting Brackets are located under the front and rear pedals. Slide (2) M6X1-20mm Square Head Bolts into the channel at the bottom of front and rear pedals accordingly (**Fig 22**). And secure Passenger Front and Rear Mounting Brackets to the pedals with (2) M6 Large Flat Washers and (2) M6 Nylon Lock Nuts, (**Fig 21**). Do not fully tighten hardware at this time.

## STEP 13

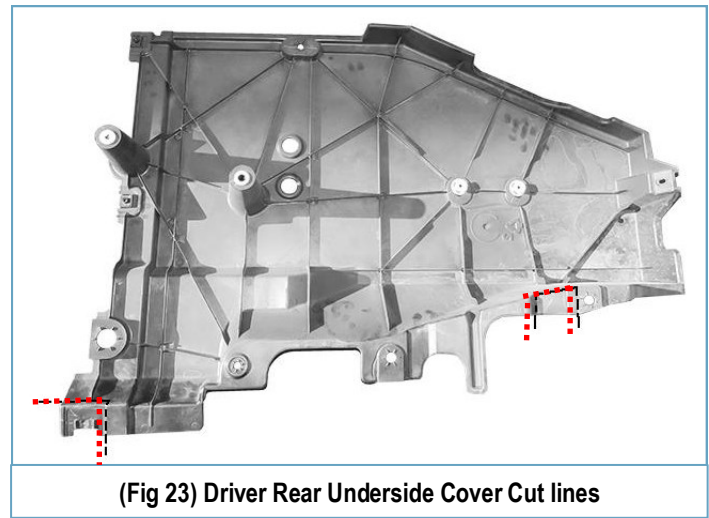
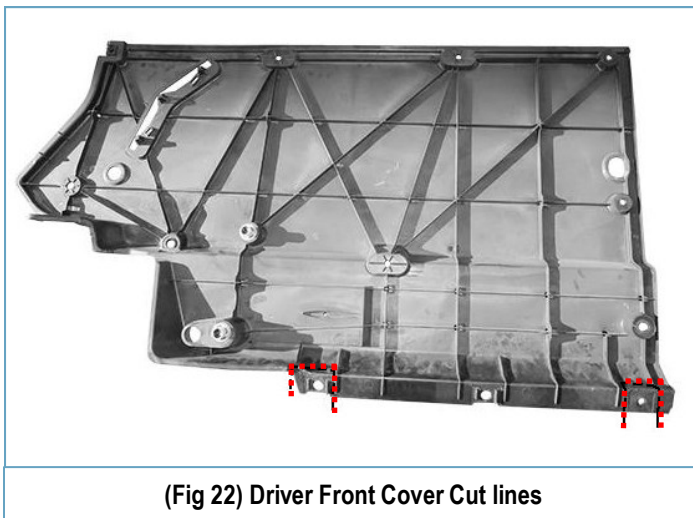
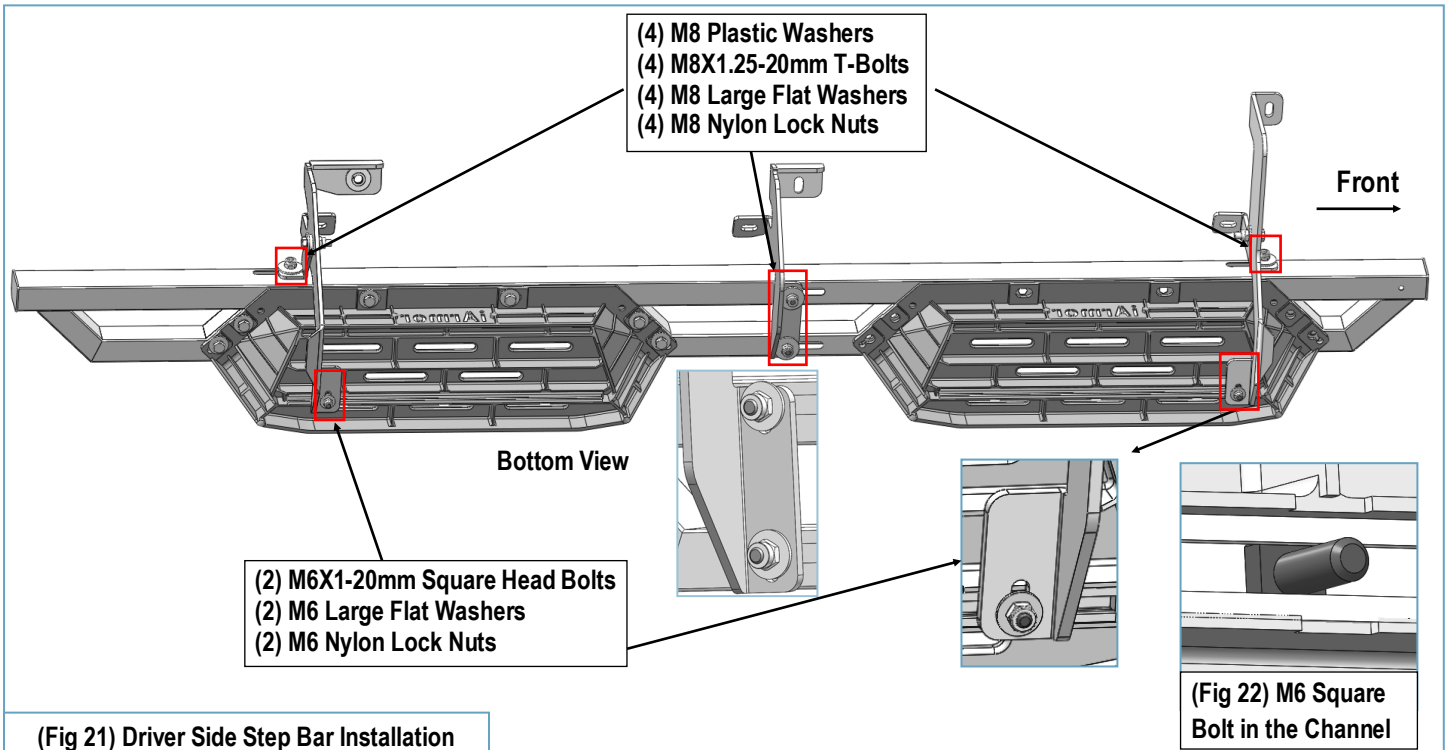
Level and adjust the assembled Step Bar properly and tighten all hardware.

Move to the other side of the vehicle. Repeat **Steps 2-12** for the other Side Step Bar installation.

Cut the Driver side Plastic Cover, (**Figs 21-23**). The installation is completed!!!



(Fig 21) Remove Plastic Cover



#### Attention

Do periodic inspections to the installation to make sure that all hardware is secure and tight.  
 In order to protect your bars/boards, please use mild soap/non-abrasive products for cleaning only.