

iArmor®

IARMOR EDGE™

PART#: IA-N280

BEFORE INSTALLATION

REMOVE CONTENTS FROM BOX. VERIFY ALL PARTS ARE PRESENT. READ INSTRUCTIONS CAREFULLY BEFORE STARTING INSTALLATION. ASSISTANCE IS RECOMMENDED. THANK YOU FOR CHOOSING OUR PRODUCT!

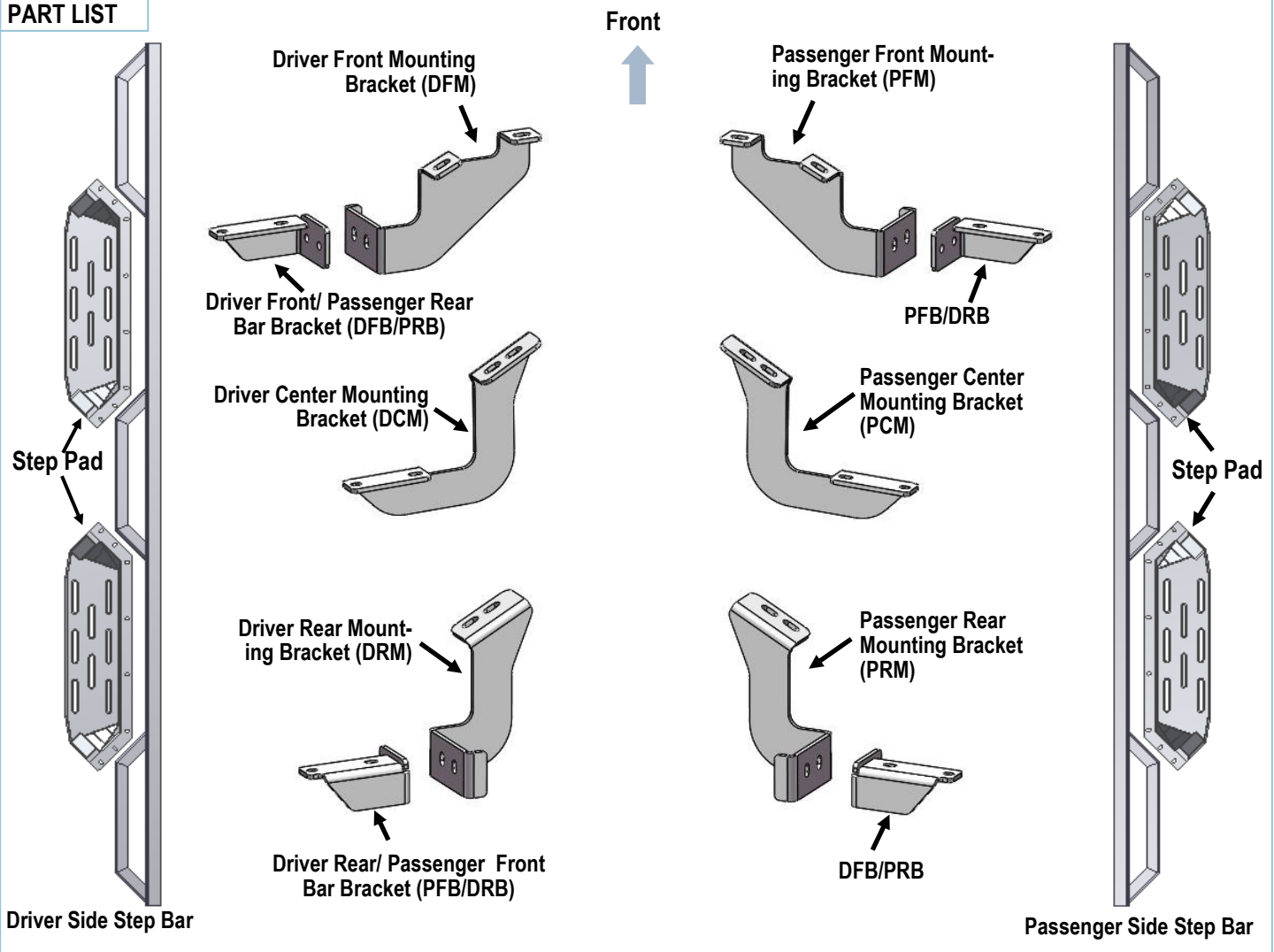
***DRILLING NOT REQUIRED**

***TRIMMING NOT REQUIRED**

Torque Value

Fastener Size	Tightening Torque (ft-lbs)	Required
6mm	6-7	√
8mm	16-18	√
10mm	31-32	X
12mm	56-58	X
14mm	92-94	X

PART LIST



Customer Support: info@iarmorauto.com

iArmor[®]



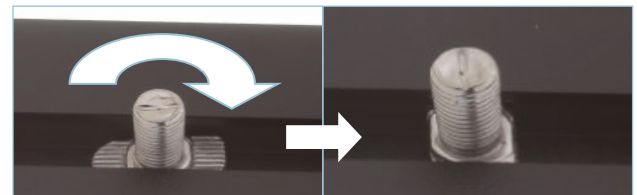
The instruction here is for your reference only. We strongly recommend the professional installer for best result. We are not responsible for any damage caused by the installation.

STEP 1

Install the Step Pads onto the step bars with (32) M6X1-20 T-Bolts, (32) M6 Large Flat Washers and (32) M6X1 Nylon Lock Nuts.

IMPORTANT: Don't hit the step pad by any metal hammer within step pad installation, or the step pad will be damaged.

(8) M6X1-20 T-Bolts
(8) M6 Flat Washers
(8) M6X1 Nylon Lock Nuts



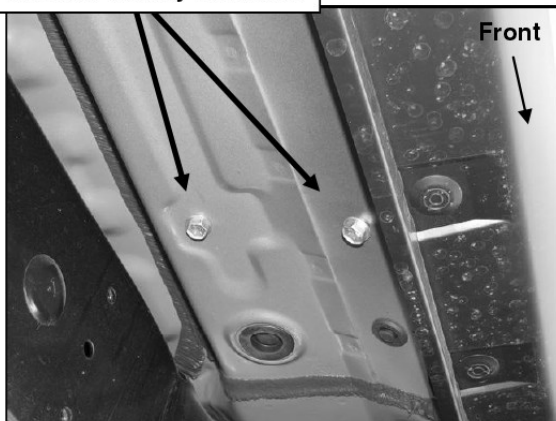
Note: Rotate 90° after inserting the T-Bolts into the Channel!!!

iArmor®

STEP 2

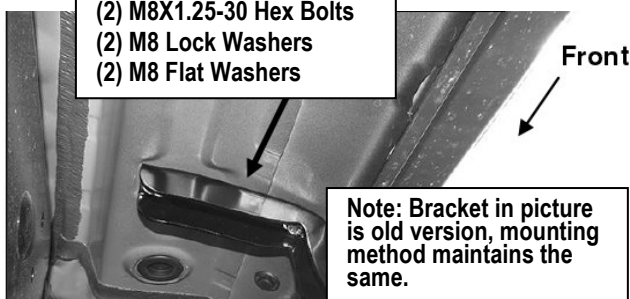
Start installation on the passenger side of the vehicle, remove the existing (2) factory bolts located by the front tire opening securing the factory rocker panel bracket to the vehicle, (**Fig 1**). Select (1) Passenger Front Mounting Bracket (**PFM**). Hold the Passenger Front Mounting Bracket over the rocker panel bracket and line up the (2) mounting holes. Secure the brackets to the vehicle using the included (2) M8X1.25-30 Hex Bolts, (2) M8 Lock Washers and (2) M8 Flat Washers, (**Fig 2**). Do not tighten hardware at this time.

Remove factory hex bolts



(Fig 1) Passenger Side Front Mounting Location

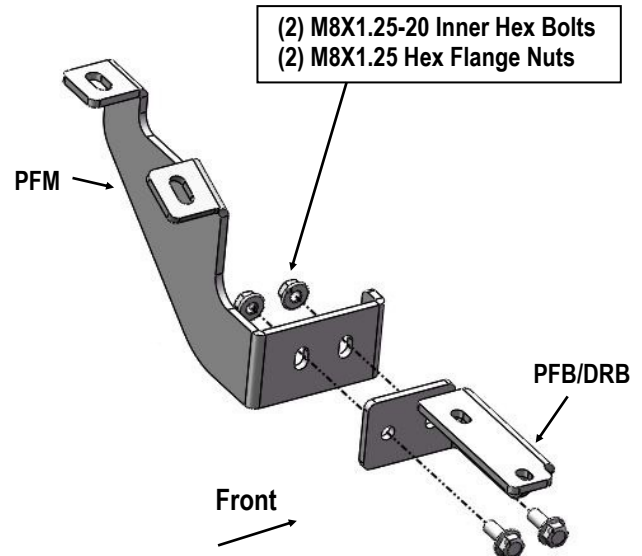
(2) M8X1.25-30 Hex Bolts
(2) M8 Lock Washers
(2) M8 Flat Washers



(Fig 2) Passenger Front Mounting Bracket Installed

STEP 3

Select (1) Passenger Front Bar Brackets (**PFB/DRB**) and attach it to the Passenger Front Mounting Bracket, using (2) M8X1.25-20 Inner Hex Bolts, (2) M8X1.25 Hex Flange Nuts, (**Fig 3**). Do not tighten hardware at this time.

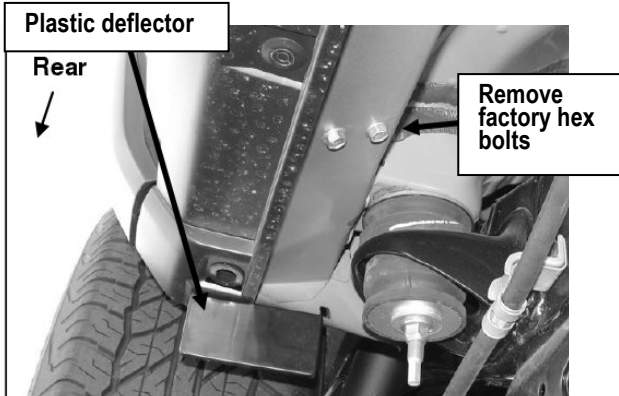


(Fig 3) Passenger Front Mounting Bracket Assembly

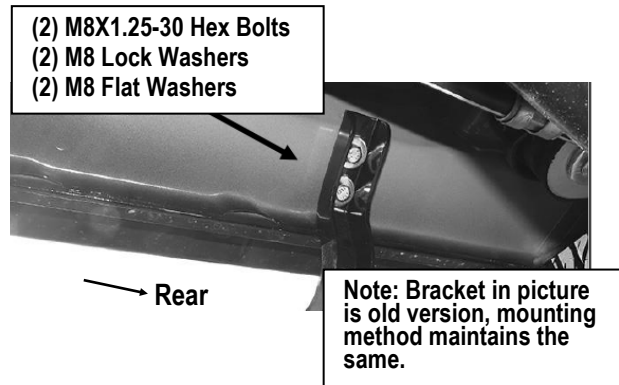
STEP 4

The center and rear brackets are similar. Select (1) Passenger Rear Mounting Bracket (**PRM**) and repeat the procedure as described in **Step 2** to install it in the rear mounting location, (**Fig 4 & 5**). Repeat the same procedure for the Passenger Center Mounting Bracket (**PCM**) installation. Do not tighten hardware at this time.

iArmor[®]



(Fig 4) Passenger Side Rear Mounting Location



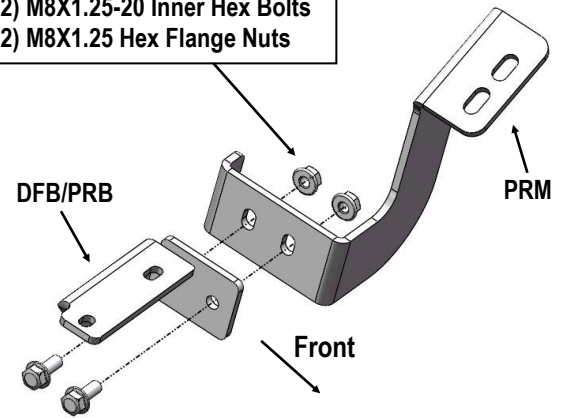
(Fig 5) Passenger Rear Mounting Bracket Installed

STEP 5

Select (1) Passenger Rear Bar Bracket (**DFB/PRB**), and attach it to the Passenger Rear Mounting Bracket, using (2) M8X1.25-20 Inner Hex Bolts, (2) M8X1.25 Hex Flange Nuts, (**Fig 6**).

NOTE: the Passenger Center Mounting Bracket does not have Bar Bracket. Do not tighten hardware at this time.

(2) M8X1.25-20 Inner Hex Bolts
(2) M8X1.25 Hex Flange Nuts



(Fig 6) Passenger Rear Mounting Bracket Assembly

STEP 6

Once all (3) Brackets have been installed, attach the Assembled Passenger Side Step Bar onto the brackets with (6) M6X1-20 T-Bolts, (6) M6 Flat Washers and (6) M6X1 Nylon Lock Nuts (**Fig 7**). Do not fully tighten hardware at this time.

STEP 7

Level and adjust the Assembled Step Bar as desired and tighten all hardware.

iArmor[®]

STEP 8

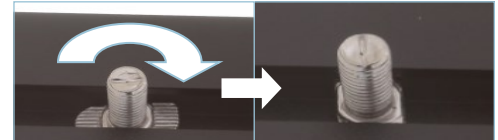
Repeat **Steps 2—7** for driver side step bar installation.

Attention

Do periodic inspections to the installation to make sure that all hardware is secure and tight.

In order to protect your bars/boards, please use only mild soap/non-abrasive products for cleaning.

(Fig 7) Passenger Side Step Bar Installation



Warning: Install the T-bolt on the step bar and rotate it to 90 degrees!!!

