

IARMOR EDGE™

PART#: IA-N280

BEFORE INSTALLATION

REMOVE CONTENTS FROM BOX. VERIFY ALL PARTS ARE PRESENT. READ INSTRUCTIONS CAREFULLY BEFORE STARTING INSTALLATION. ASSISTANCE IS RECOMMENDED. THANK YOU FOR CHOOSING OUR PRODUCT!

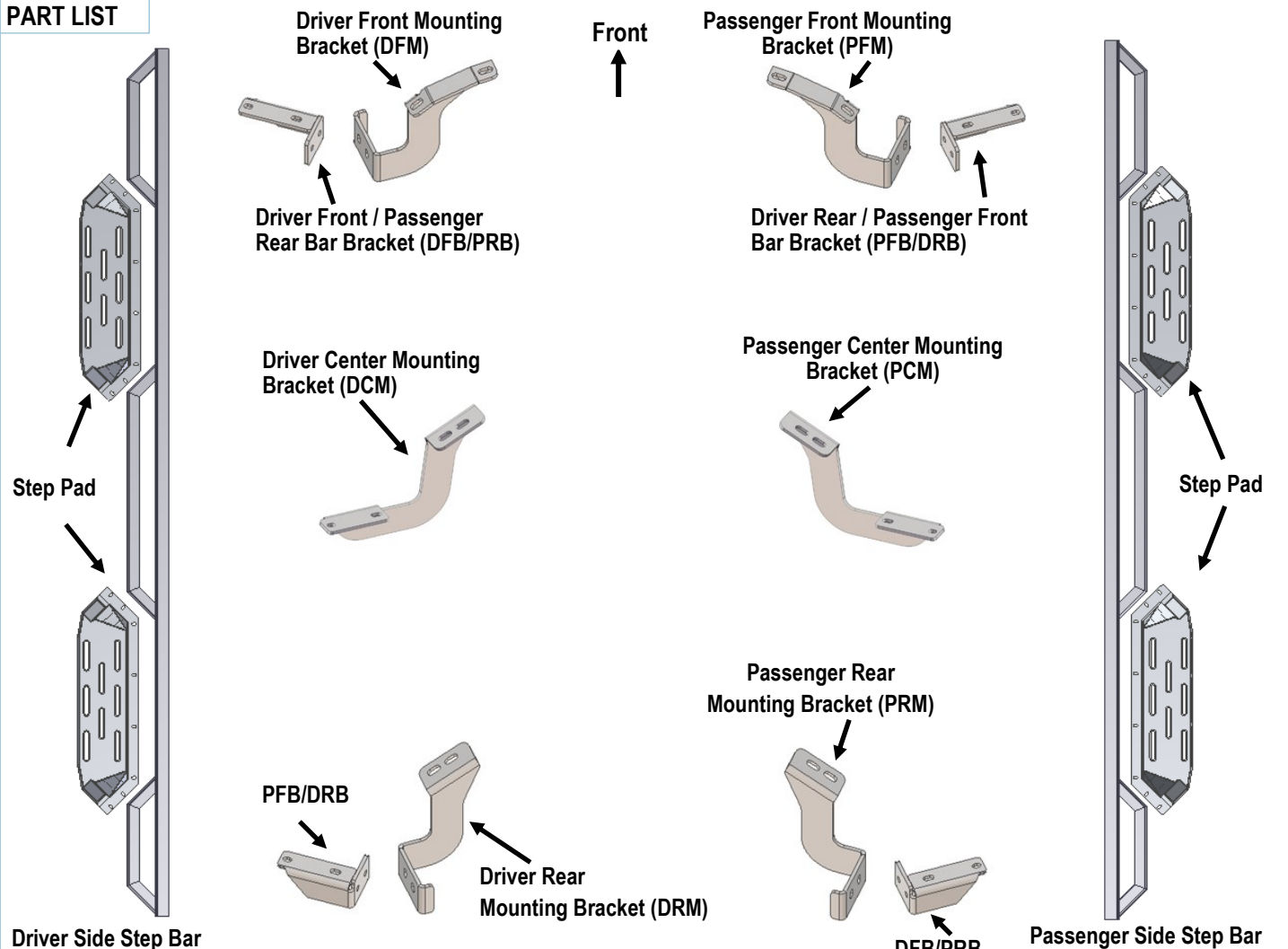
*DRILLING NOT REQUIRED

*TRIMMING NOT REQUIRED

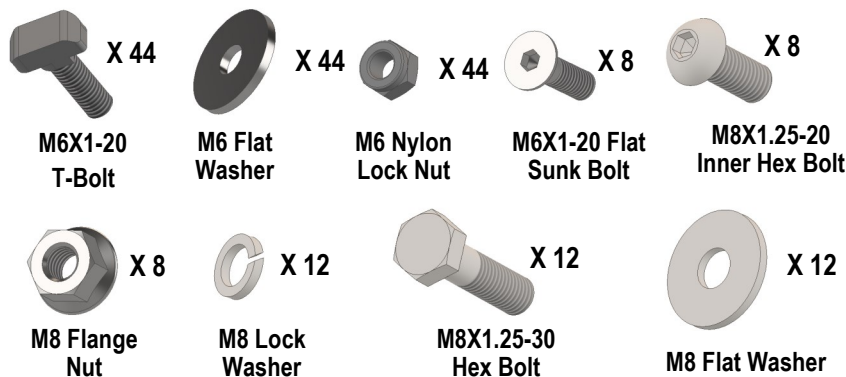
Torque Value

Fastener Size	Tightening Torque (ft-lbs)
6mm	6-7
8mm	16-18
10mm	31-32
12mm	56-58
14mm	92-94

PART LIST



iArmor®



The instruction here is for your reference only. We strongly recommend the professional installer for best result. We are not responsible for any damage caused by the installation.

STEP 1

Install the Step Pads onto the step bars with (32) M6x1-20mm T-Bolts, (32) M6 Large Flat Washers, (32) M6X1Nylon Lock Nuts and (8) M6X1-20mm Flat Sunk Head Bolts.

IMPORTANT: Don't hit the step pad by any metal hammer within step pad installation, or the step pad will be damaged.

(8) M6x1-20 T-Bolts
(8) M6 Large Flat Washers
(8) M6X1 Nylon Lock Nuts

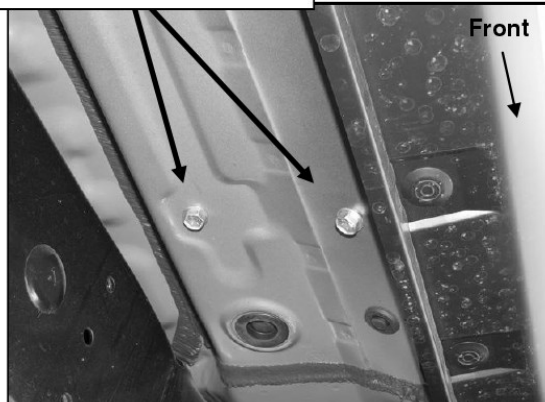
(2) M6x1-20 Flat Sunk Head Bolts

STEP 2

Start installation on the passenger side of the vehicle, remove the existing (2) factory bolts close to front tire opening, (**Fig 1**). Select (1) Passenger Front Mounting Bracket (**PFM**). Hold the Passenger Front Mounting Bracket over the rocker panel bracket and line up the (2) mounting holes. Secure the brackets to the vehicle by using the included (2) M8X1.25-30 Hex Bolts, (2) M8 Lock Washers and (2) M8 Flat Washers, (**Fig 2**). Do not fully tighten hardware at this time.

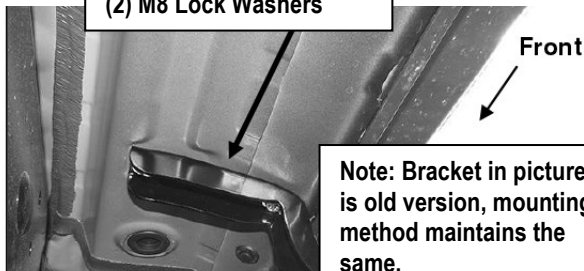
iArmor®

Remove factory hex bolts



(Fig 1) Passenger Side Front Mounting Location

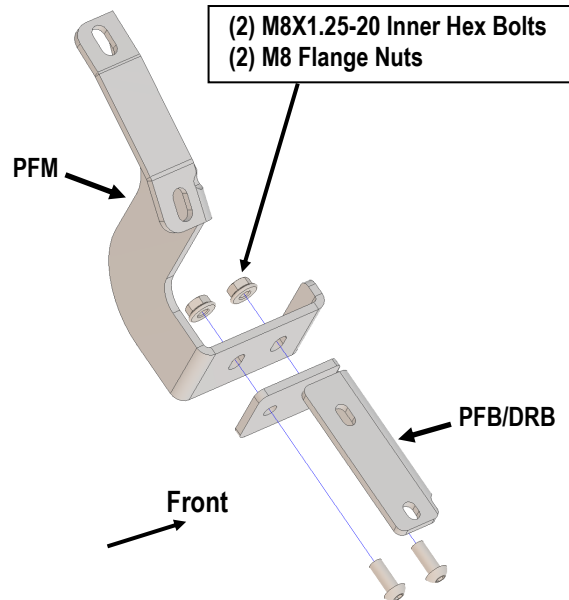
(2) M8X1.25-30 Hex Bolts
(2) M8 Flat Washers
(2) M8 Lock Washers



(Fig 2) Passenger Front Mounting Bracket Installed

STEP 3

Select (1) Passenger Front Bar Bracket (**PFB/DRB**) and attach it to the installed Passenger Front Mounting Bracket by using (2) M8X1.25-20 Inner Hex Bolt, (2) M8 Flange Nut, (**Fig 3**). Do not fully tighten hardware at this time.

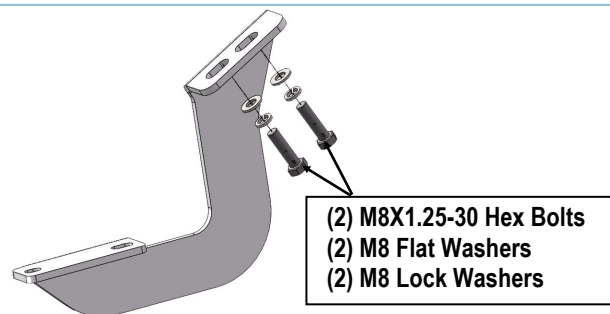


(Fig 3) Passenger Front Mounting Bracket Assembly

STEP 4

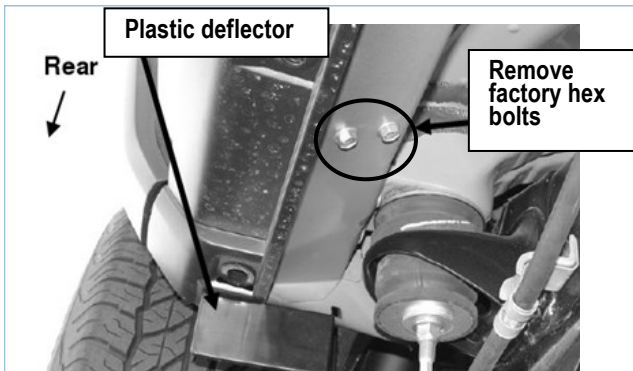
Move to the Passenger Side Center Mounting Location, repeat **Step 2** to install the Passenger Center Mounting Bracket (**PCM**) on the Mounting Location, (**Fig 4**).

NOTE: No Support Bracket for the Center Mounting Brackets. Move to the Passenger Side Rear Mounting Location, (**Fig 5**). Repeat **Steps 2** for the Mounting Bracket (**PRM**) installation. Do not fully tighten hardware at this time.



(Fig 4) Passenger Center Mounting Bracket Installed

iArmor®



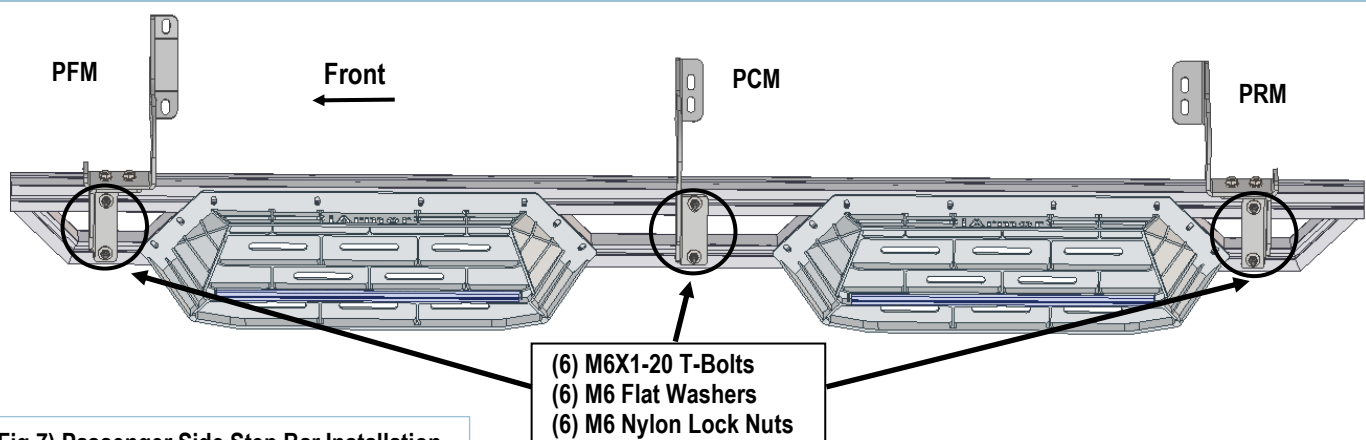
(Fig 5) Passenger Side Rear Mounting Location

STEP 5

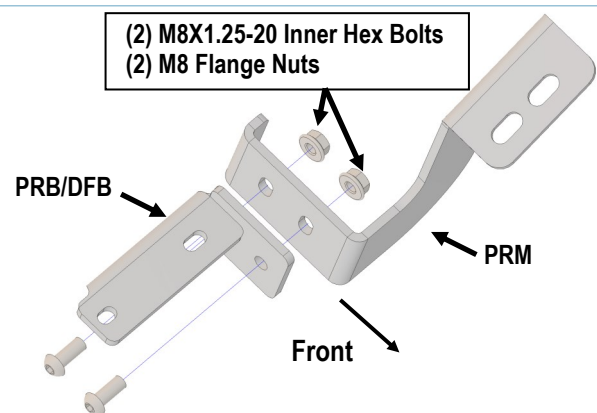
Select (1) Passenger Rear Bar Bracket (**DFB/PRB**), and attach it to the installed Passenger Rear Mounting Bracket by using (2) M8X1.25-20 Inner Hex Bolt, (2) M8 Flange Nut, (**Fig 6**). Do not fully tighten hardware at this time.

STEP 6

Once all (3) passenger side mounting brackets are installed, attach the Assembled Passenger Side Step Bar onto the brackets with (6) M6X1-20 T-Bolts, (6) M6 Large Flat Washers and (6) M6x1 Nylon Lock Nuts, (**Fig 6**). Do not fully tighten hardware at this time. Properly level and adjust the Step Bar and fully tighten all hardware.



(Fig 7) Passenger Side Step Bar Installation



(Fig 6) Passenger Rear Mounting Bracket Assembly

STEP 7

Move to the driver side of the vehicle. Repeat **Steps 2-6** to install driver side step bar.

Attention

Do periodic inspections to the installation to make sure that all hardware is secure and tight.

In order to protect your bars/boards, please use only mild soap/non-abrasive products for cleaning.