

IARMOR EDGE™

PART#: IA-N230

BEFORE INSTALLATION

REMOVE CONTENTS FROM BOX. VERIFY ALL PARTS ARE PRESENT. READ INSTRUCTIONS CAREFULLY BEFORE STARTING INSTALLATION. ASSISTANCE IS RECOMMENDED. THANK YOU FOR CHOOSING OUR PRODUCT!

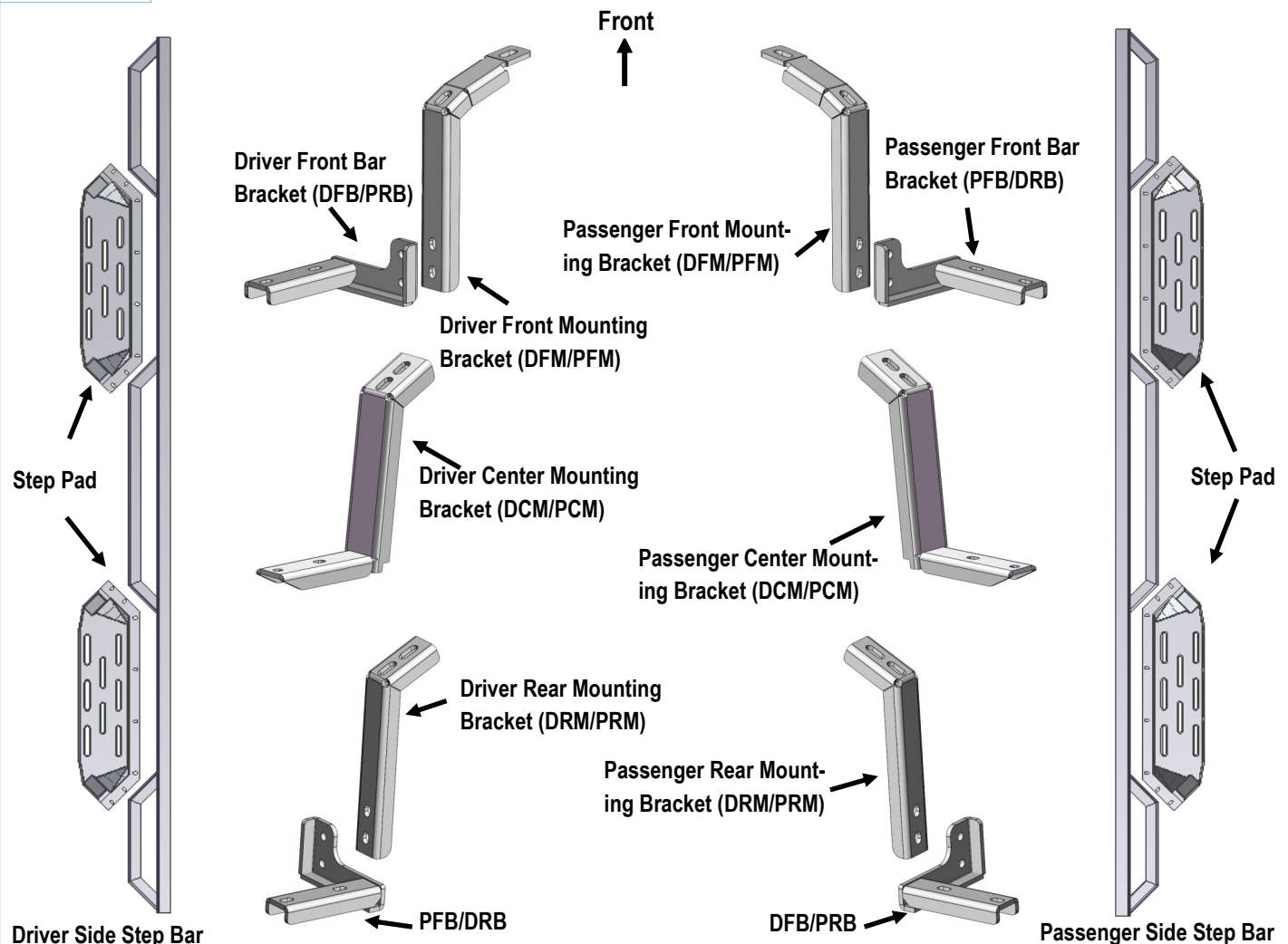
***DRILLING NOT REQUIRED**

***TRIMMING NOT REQUIRED**

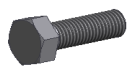
Torque Value

Fastener Size	Tightening Torque (ft-lbs)
6mm	6-7
8mm	16-18
10mm	31-32
12mm	56-58
14mm	92-94

PART LIST



iArmor®



X12

M8X1.25-30 Hex Bolt



X12

M8 Flat Washer



X12

M8 Lock Washer



X8

M8X1.25-20 Inner Hex Bolt



X8

M8X1.25 Hex Flange Nut



X44

M6X1-20 T-Bolt



X44

M6 Large Flat Washer



X44

M6X1 Nylon Lock Nut



X8

M6X1-20 Flat Sunk Head Bolt

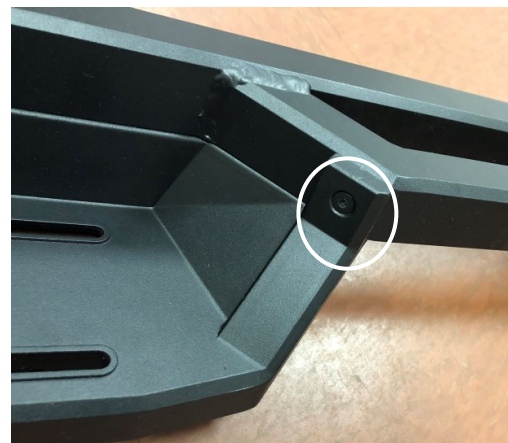
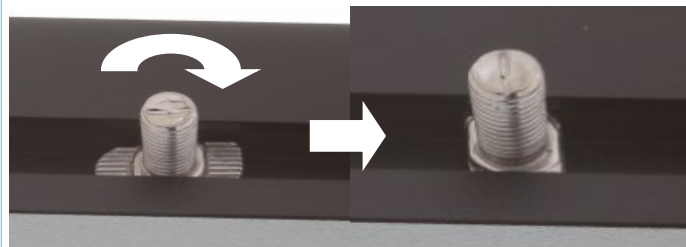
The instruction here is for your reference only. We strongly recommend the professional installer for best result. We are not responsible for any damage caused by the installation.

STEP 1

Install the Step Pads onto the step bars with (32) M6x1-20 T-Bolts, (32) M6 Large Flat Washers, (32) M6X1Nylon Lock Nuts and (8) M6X1-20 Flat sunk head bolts.

IMPORTANT: Don't hit the step pad by any metal hammer within step pad installation, or the step pad will be damaged.

(8) M6X1-20 T-Bolts
(8) M6 Large Flat Washers
(8) M6 Nylon Lock Nuts



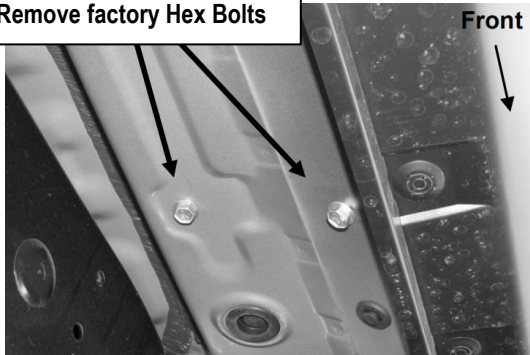
M6X1-20 Flat Sunk Head Bolt Location

STEP 2

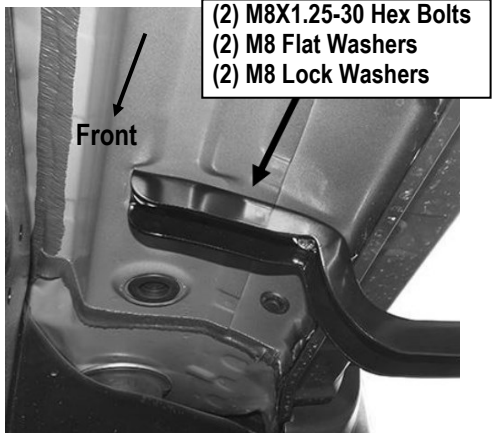
Start installation on the passenger side of the vehicle, remove the existing (2) factory bolts located by the front tire opening securing the factory rocker panel bracket to the vehicle, (**Fig1**). Select (1) Passenger Front Mounting Bracket (**DFM/PFM**), hold the Front Bracket over the rocker panel bracket and line up the (2) mounting holes. Secure the brackets to the vehicle using the included (2) M8X1.25-30 Hex Bolts, (2) M8 Lock Washers and (2) M8 Flat Washers, (**Fig 2**). Do not fully tighten hardware at this time.

iArmor®

Remove factory Hex Bolts



(Fig 1) Passenger Side Front Mounting Location



(Fig 2) Passenger Side Front Mounting Bracket Installed

STEP 3

Select (1) Passenger Front Bar Bracket (**PFB/ DRB**), attach it to the installed Passenger Front Mounting Bracket with (2) M8X1.25-20 Inner Hex Bots, and (2) M8X1.25 Flange Nuts. (**Fig 3**). Do not fully tighten hardware at this time.

PFM/DFM

(2) M8X1.25-20 Inner Hex Bolts
(2) M8X1.25 Flange Nuts

PFB/DRB

Front

(Fig 3) Passenger Side Front Brackets Assembly

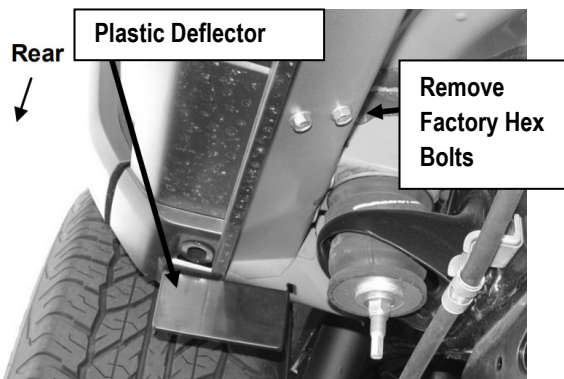
STEP 4

Move to the Passenger Side Center Mounting Location, select (1) Passenger Center Mounting Bracket (**PCM**). Repeat **Step 2** to attach the Passenger Center Mounting Bracket with (2) M8X1.25-30 Hex Bolts, (2) M8 Lock Washers and (2) M8 Flat Washers. Do not fully tighten hardware at this time.

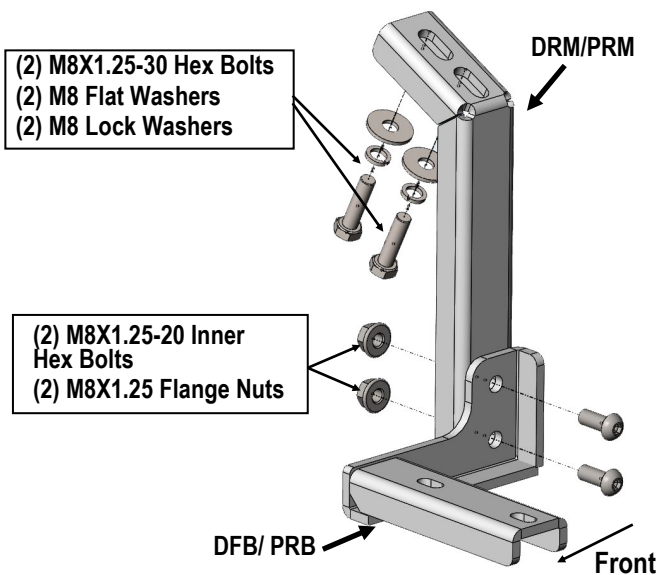
STEP 5

Continue to Passenger Side Rear Mounting Location (**Fig 4**), select (1) Passenger Rear Mounting Bracket (**DRM/PRM**), repeat **Steps 2-3** to attach the Passenger Side Rear Bracket, (**Fig 5**). Do not tighten hardware at this time.

iArmor®



(Fig 4) Passenger Side Rear Mounting Location



(Fig 5) Passenger Side Rear Brackets Installed

STEP 6

Once all 3 brackets have been installed, attach the assembled passenger step bar onto the brackets with (6) M6X1-20 T-Bolts, (6) M6 Flat Washers and (6) M6X1 Nylon Lock Nuts, (Fig 6). Do not fully tighten hardware at this time.

STEP 7

Level and adjust the step bar and tighten all hardware. Repeat Steps 2-6 for driver side step bar installation.

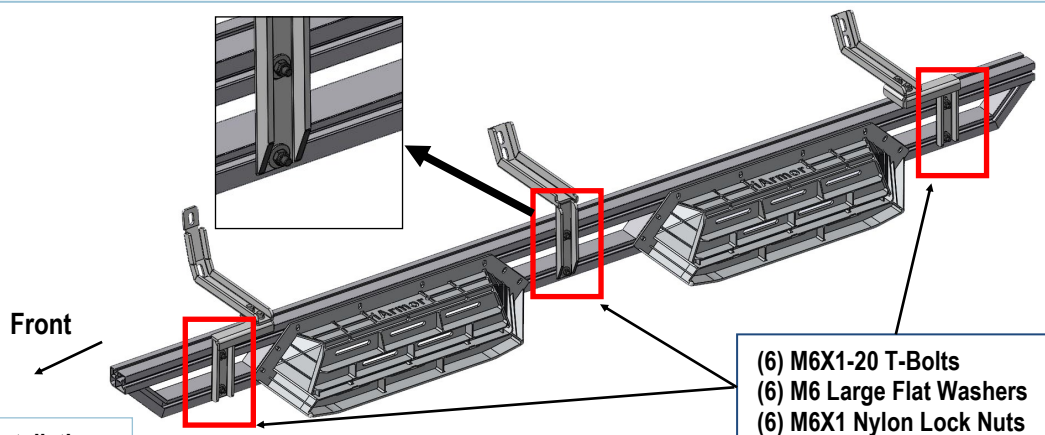
STEP 8

Do periodic inspections to the installation to make sure that all hardware is secure and tight.

Attention

Do periodic inspections to the installation to make sure that all hardware is secure and tight.

In order to protect your bars/boards, please use only mild soap/non-abrasive products for cleaning.



(Fig 6) Passenger Side Step Installation