

iArmor[®]

iArmor[®] by APS

PART#: IA-S084

BEFORE INSTALLATION

REMOVE CONTENTS FROM BOX. VERIFY ALL PARTS ARE PRESENT. READ INSTRUCTIONS CAREFULLY BEFORE STARTING INSTALLATION. ASSISTANCE IS RECOMMENDED. THANK YOU FOR CHOOSING OUR PRODUCT!

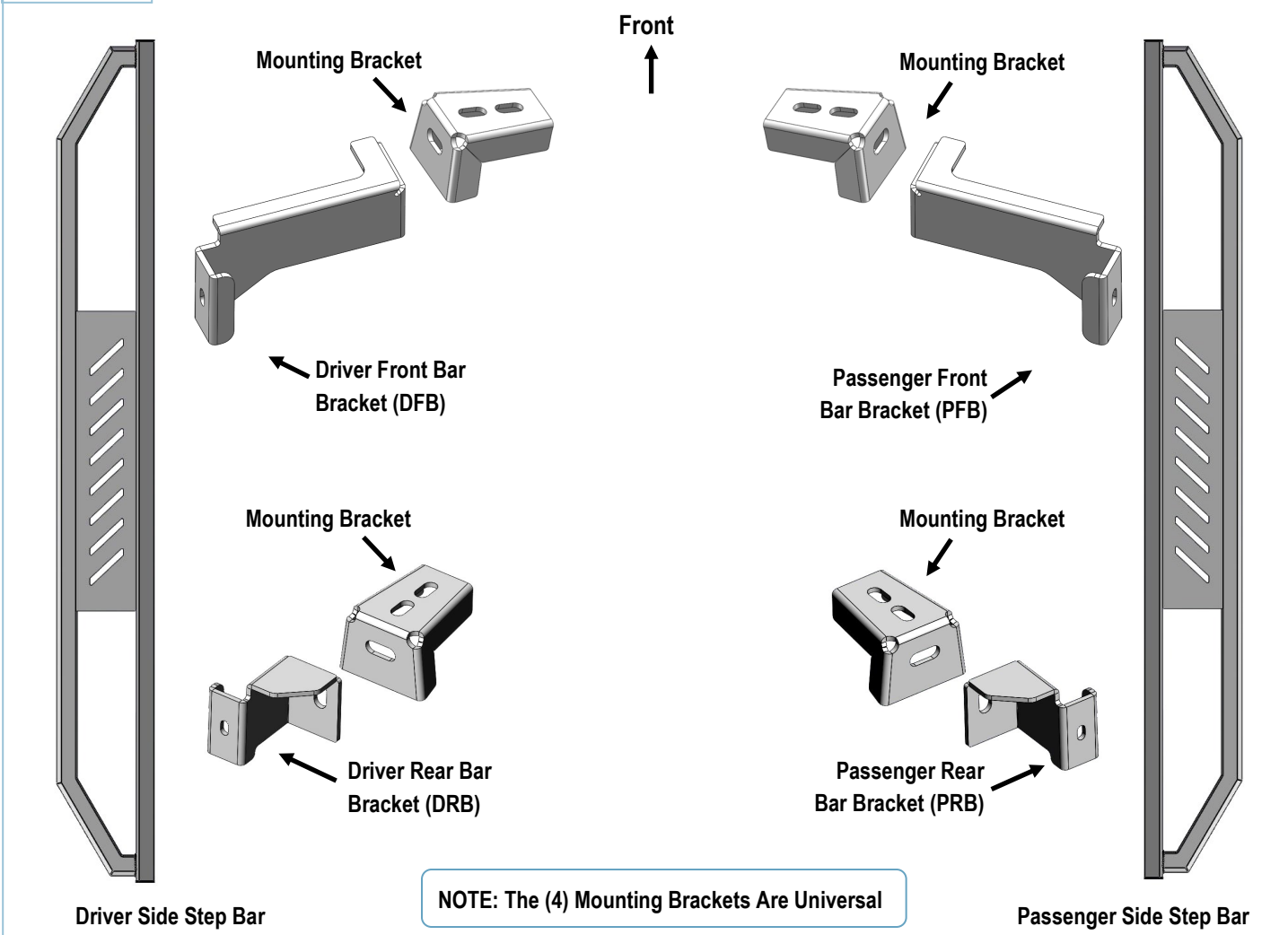
***ROCKER PANEL MOUNT**

***NO DRILLING / TRIMMING REQUIRED**

Torque Value

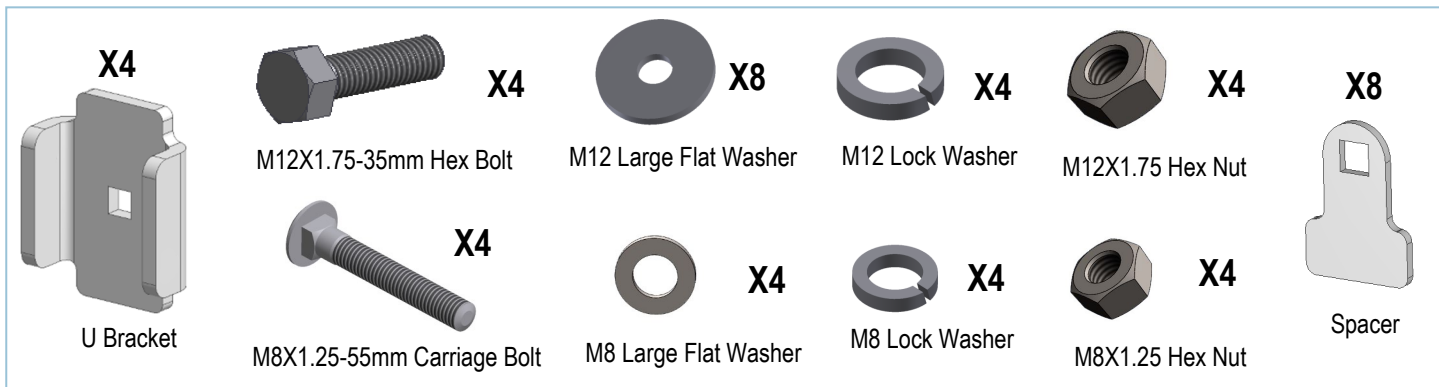
Fastener Size	Tightening Torque (ft-lbs)	Required
6mm	6-7	X
8mm	16-18	√
10mm	31-32	X
12mm	56-58	√
14mm	92-94	X

PART LIST



Customer Support: info@iarmorauto.com

iArmor®



The instruction here is for your reference only. We strongly recommend the professional installer for best result. We are not responsible for any damage caused by the installation.

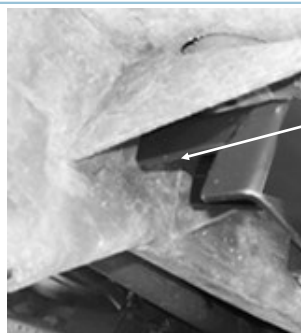
STEP 1

Start installation toward the front of the driver side of the vehicle. Remove the factory body mount bolt (**Fig 1**). Select (1) Mounting Bracket. Insert the factory body mount bolt through the appropriate slot, the rubber bushing and back into the vehicle. **NOTE:** Do not remove the rubber bushing. The Mounting Bracket will install over the rubber bushing. **IMPORTANT:** The Brackets are equipped with (2) mounting slots. Determine correct model year for proper installation (**Figs 2-3**):

- a. **1987 - 1995 Vehicles:** Use the inner slot. Do not tighten hardware at this time.
- b. **1997 - 2006 Vehicles:** Use the outer slot closer to the bend in the Bracket. Do not tighten hardware at this time.



(Fig 1) Remove Factory Body Mount Bolt

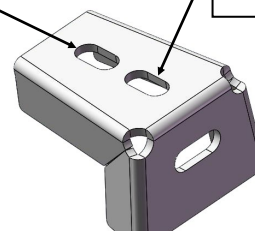


Re-Use The Factory Hex Bolt To Attach The Bracket To Rubber Bushing And Body Mount

(Fig 2) Mounting Bracket Installation Pictured

1987 - 1995 Vehicles:
Use The Inner Slot

1997 - 2006 Vehicles: Use
The Outer Slot Closer To
The Bend In The Bracket

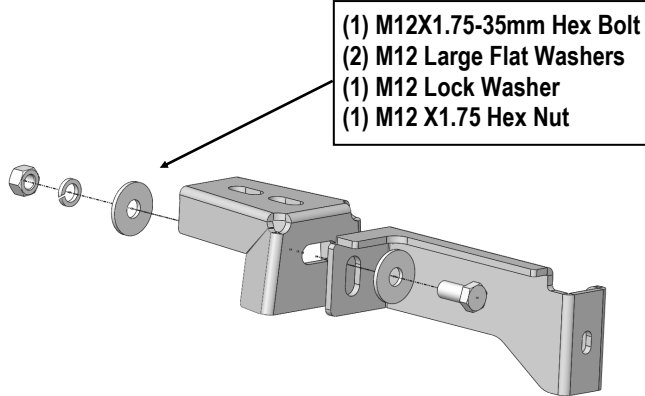


(Fig 3) Mounting Bracket

iArmor®

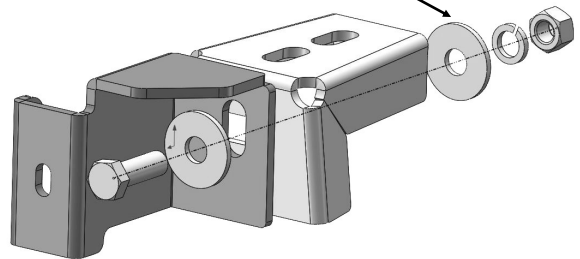
STEP 2

Select the Driver Front Bar Bracket (**DFB**), attach to the Mounting Bracket with (1) M12X1.75-35mm Hex Bolt, (2) M12 Large Flat Washers, (1) M12 Lock Washer and (1) M12 X1.75 Hex Nut (**Fig 4**). Repeat for driver side rear bracket (**Fig 5**).



(Fig 4) Driver Front Bracket Installation Pictured

- (1) M12X1.75-35mm Hex Bolt
- (2) M12 Large Flat Washers
- (1) M12 Lock Washer
- (1) M12 X1.75 Hex Nut



(Fig 5) Driver Rear Bracket Installation Pictured

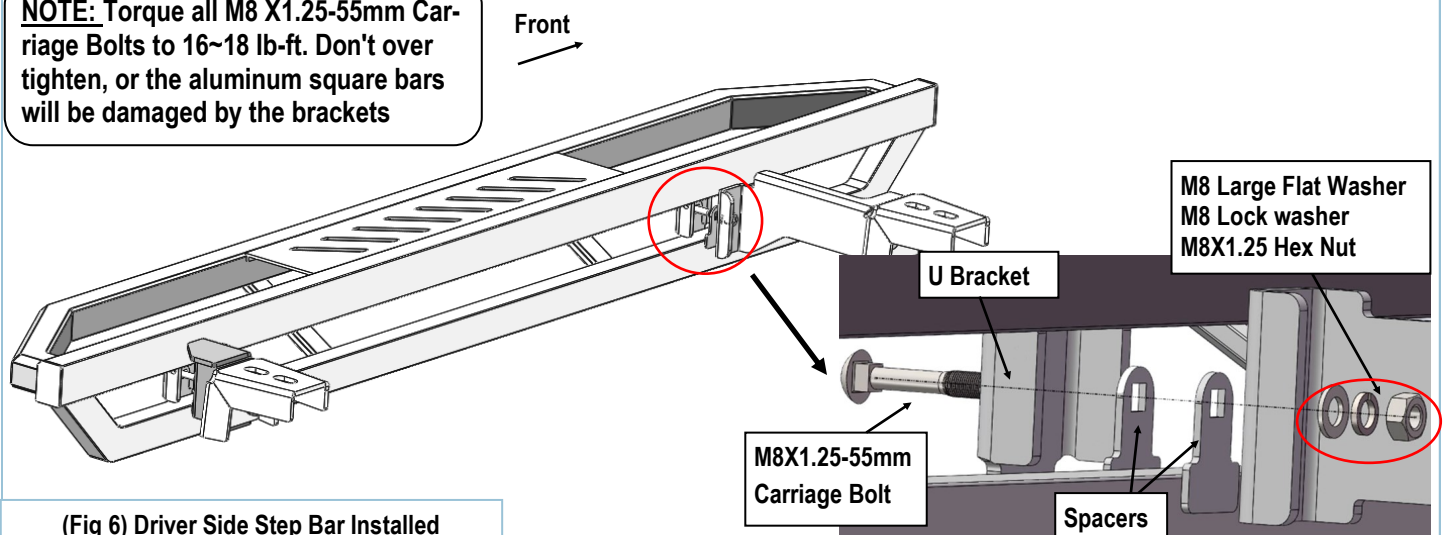
STEP 3

Repeat **Step 1** for the driver side rear bracket installation.

STEP 4

Once all (2) driver side mounting brackets are installed, select and attach the Driver Side Step Bar onto the Mounting Brackets with (2) U Brackets, (4) Spacers, (2) M8X1.25-55mm Carriage Bolts, (2) M8 Large Flat Washers, (2) M8 Lock Washers and (2) M8X1.25 Hex Nuts (**Fig 6**). Do not fully tighten hardware at this time.

NOTE: Torque all M8 X1.25-55mm Carriage Bolts to 16~18 lb-ft. Don't over tighten, or the aluminum square bars will be damaged by the brackets



(Fig 6) Driver Side Step Bar Installed

Customer Support: info@iarmorauto.com

iArmor[®]

STEP 5

Properly level and adjust the Step Bar and fully tighten all hardware.

STEP 6

Move to the passenger side of the vehicle. Repeat **Steps 1-5** to install passenger side step bar.

Installation completed.

Attention

Do periodic inspections to the installation to make sure that all hardware is secure and tight.

In order to protect your bars/boards, please use only mild soap/non-abrasive products for cleaning.