

iArmor® by APS

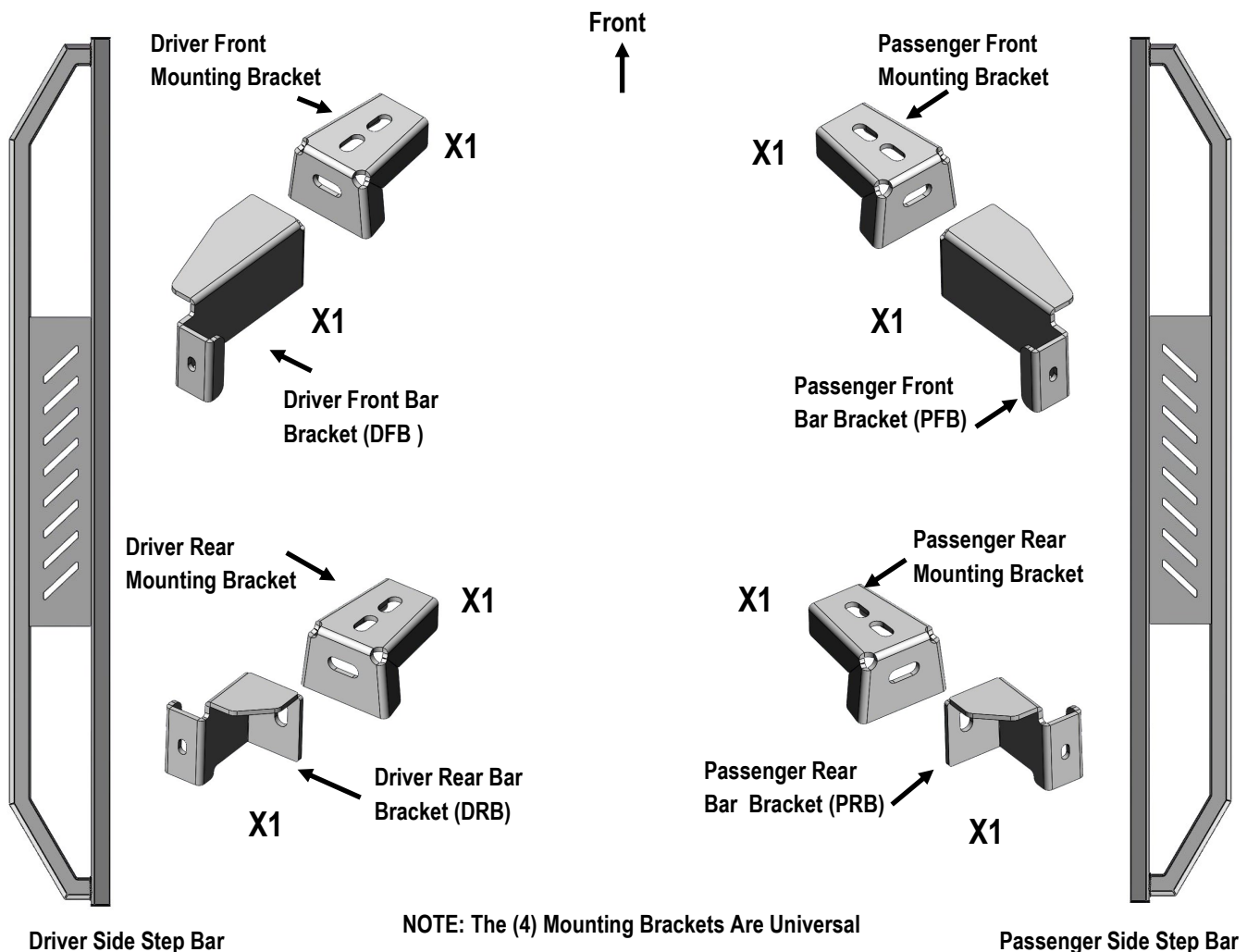
PART#: IA-S084

BEFORE INSTALLATION

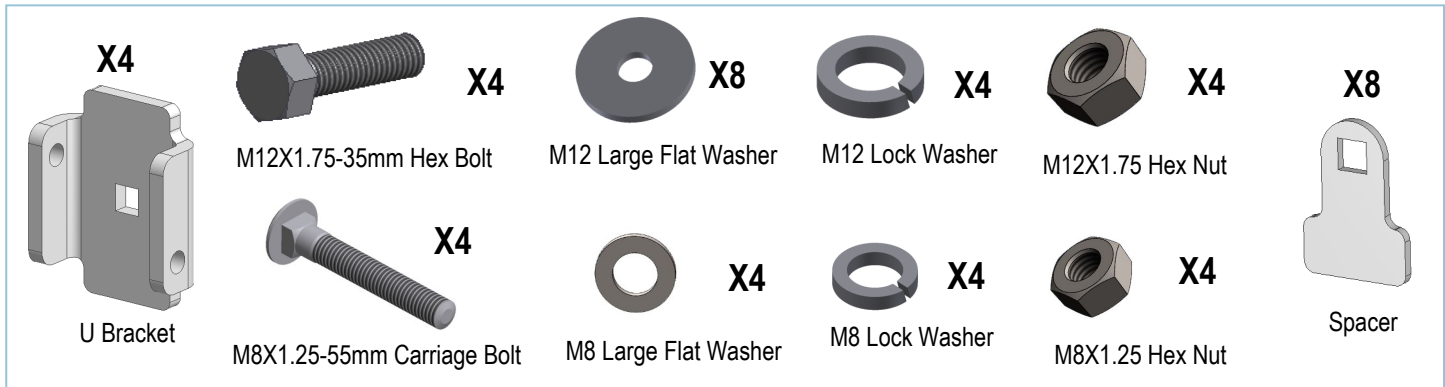
REMOVE CONTENTS FROM BOX. VERIFY ALL PARTS ARE PRESENT. READ INSTRUCTIONS CAREFULLY BEFORE STARTING INSTALLATION. ASSISTANCE IS RECOMMENDED. THANK YOU FOR CHOOSING OUR PRODUCT!

Fastener Size	Tightening Torque (ft-lbs)
6mm	6-7
8mm	16-18
10mm	31-32
12mm	56-58
14mm	92-94

PART LIST



iArmor®



The instruction here is for your reference only. We strongly recommend the professional installer for best result. We are not responsible for any damage caused by the installation.

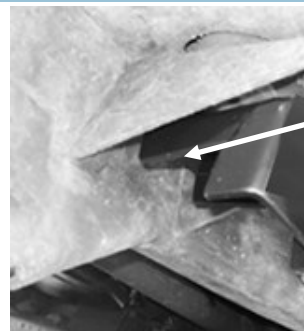
STEP 1

Start installation toward the front of the driver side of the vehicle. Remove the factory body mount bolt (**Fig 1**). Select (1) Mounting Bracket. Insert the factory body mount bolt through the appropriate slot, the rubber bushing and back into the vehicle. **NOTE:** Do not remove the rubber bushing. The Mounting Bracket will install over the rubber bushing. **IMPORTANT:** The Brackets are equipped with (2) mounting slots. Determine correct model year for proper installation (**Figs 2-3**):

- 1987 - 1995 Vehicles:** Use the inner slot. Do not tighten hardware at this time.
- 1997 - 2006 Vehicles:** Use the outer slot closer to the bend in the Bracket. Do not tighten hardware at this time.



(Fig 1) Remove Factory Body Mount Bolt

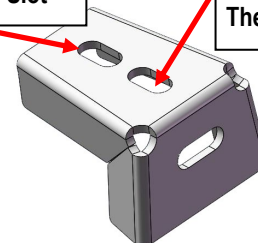


Re-Use The Factory Hex Bolt To Attach The Bracket To Rubber Bushing And Body Mount

(Fig 2) Mounting Bracket Installation Pictured

1987 - 1995 Vehicles:
Use The Inner Slot

1997 - 2006 Vehicles: Use
The Outer Slot Closer To
The Bend In The Bracket

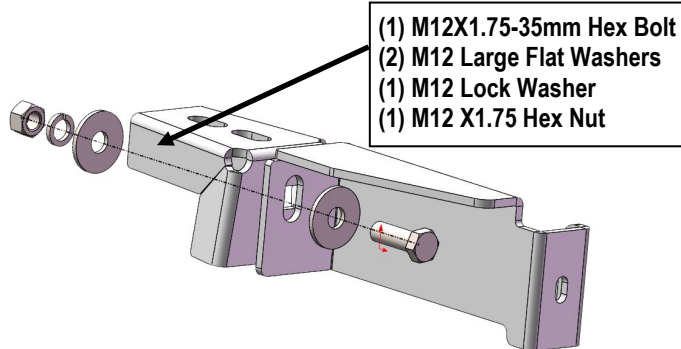


(Fig 3) Mounting Bracket

iArmor®

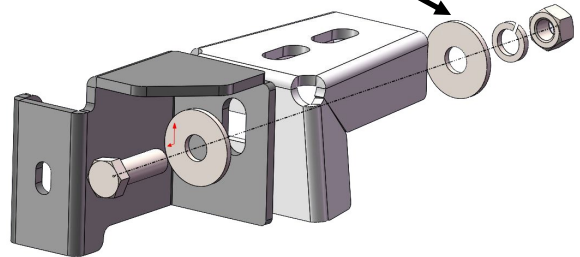
STEP 2

Select the Driver Front Bar Bracket (**DFB**), attach to the Mounting Bracket with (1) M12X1.75-35mm Hex Bolt, (2) M12 Large Flat Washers, (1) M12 Lock Washer and (1) M12 X1.75 Hex Nut (**Fig 4**). Repeat for driver side rear bracket (**Fig 5**).



(Fig 4) Driver Front Bracket Installation Pictured

- (1) M12X1.75-35mm Hex Bolt
- (2) M12 Large Flat Washers
- (1) M12 Lock Washer
- (1) M12 X1.75 Hex Nut



(Fig 5) Driver Rear Bracket Installation Pictured

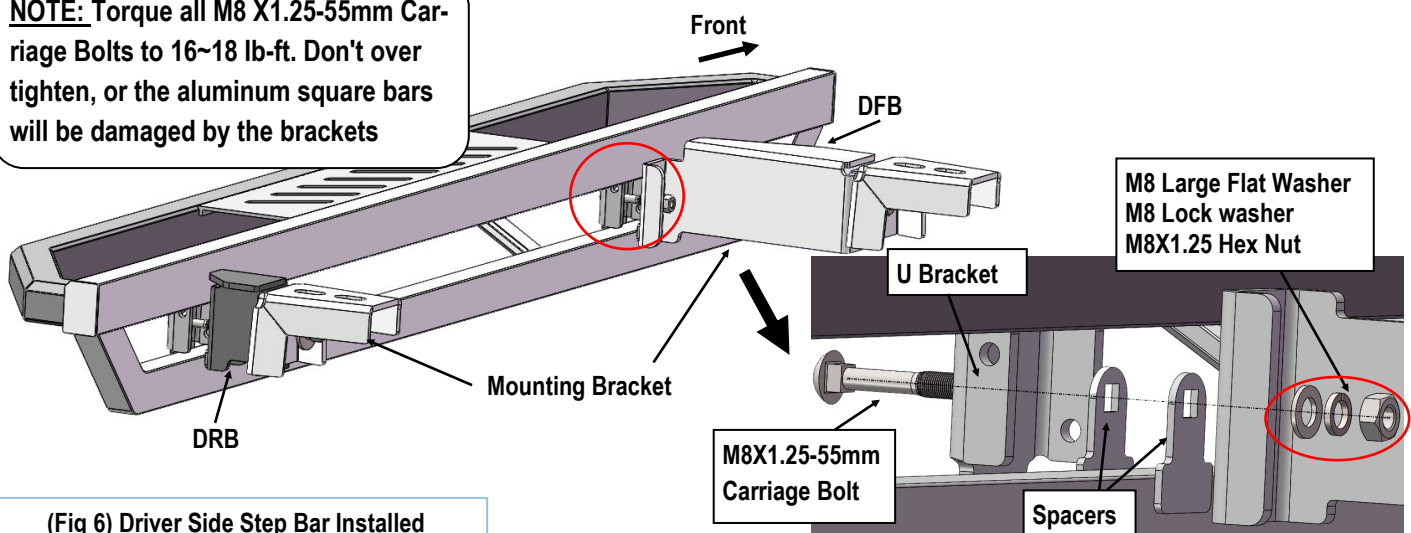
STEP 3

Repeat **Step 1** for the driver side rear bracket installation.

STEP 4

Once all (2) driver side mounting brackets are installed, select and attach the Driver Side Step Bar onto the Mounting Brackets with (2) U Brackets, (4) Spacers, (2) M8X1.25-55mm Carriage Bolts, (2) M8 Large Flat Washers, (2) M8 Lock Washers and (2) M8X1.25 Hex Nuts (**Fig 6**). Do not fully tighten hardware at this time.

NOTE: Torque all M8 X1.25-55mm Carriage Bolts to 16~18 lb-ft. Don't over tighten, or the aluminum square bars will be damaged by the brackets



(Fig 6) Driver Side Step Bar Installed

iArmor®

STEP 5

Properly level and adjust the Step Bar and fully tighten all hardware.

STEP 6

Move to the passenger side of the vehicle. Repeat **Steps 1-5** to install passenger side step bar.

Installation completed (**Fig 7**).



(Fig 7) Installation Completed

Attention

Do periodic inspections to the installation to make sure that all hardware is secure and tight.

In order to protect your bars/boards, please use only mild soap/non-abrasive products for cleaning.