

IARMOR EDGE™

PART#: IA-N108

BEFORE INSTALLATION

REMOVE CONTENTS FROM BOX. VERIFY ALL PARTS ARE PRESENT. READ INSTRUCTIONS CAREFULLY BEFORE STARTING INSTALLATION. ASSISTANCE IS RECOMMENDED. THANK YOU FOR CHOOSING OUR PRODUCT!

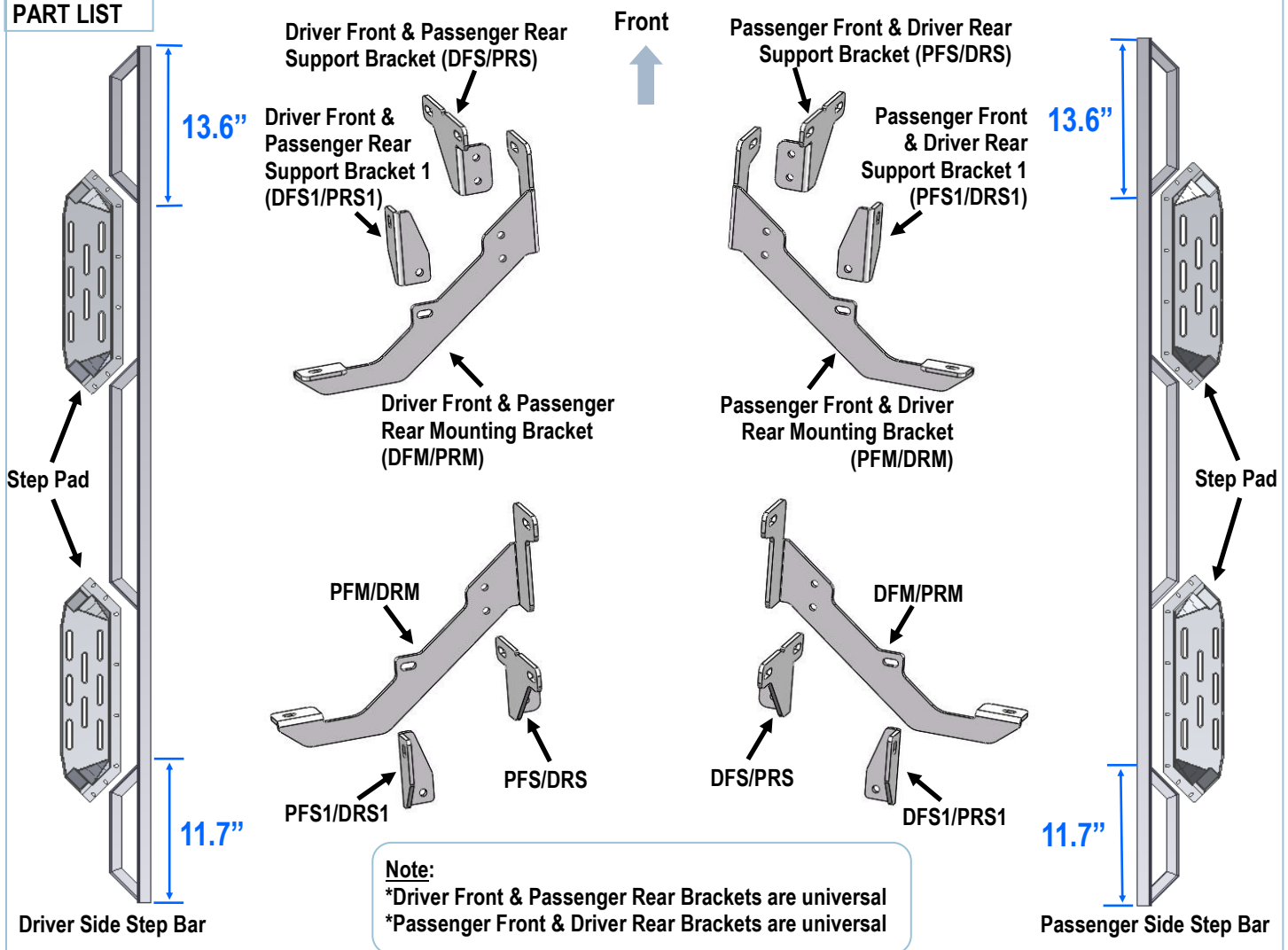
*DRILLING NOT REQUIRED

*TRIMMING NOT REQUIRED

Torque Value

Fastener Size	Tightening Torque (ft-lbs)	Required
6mm	6-7	√
8mm	16-18	√
10mm	31-32	X
12mm	56-58	X
14mm	92-94	X

PART LIST



iArmor®



M8X1.25-30mm
Hex Bolt



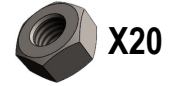
M8X1.25-25mm
Hex Bolt



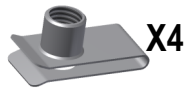
M8 Large Flat
Washer



M8 Lock Washer



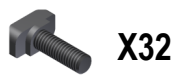
M8 Hex Nut



M8 Clip Nut



M6X1-20mm Square
Head Bolt



M6X1-20mm T-Bolt



M6 Large Flat Washer



M6 Nylon Lock Nut

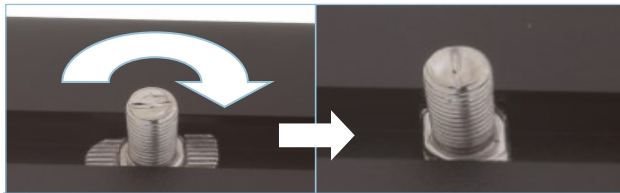
The instruction here is for your reference only. We strongly recommend the professional installer for best result. We are not responsible for any damage caused by the installation.

STEP 1

Install the Step Pads onto the step bars with (32) M6X1-20mm T-Bolts, (32) M6 Large Flat Washers and (32) M6 Nylon Lock Nuts.

IMPORTANT: Don't hit the step pad by any metal hammer within step pad installation, or the step pad will be damaged.

(8) M6X1-20 T-Bolts
(8) M6 Flat Washers
(8) M6 Nylon Lock Nuts



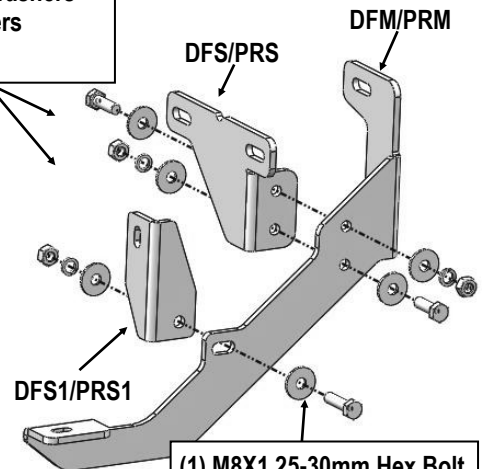
Note: Rotate 90° after inserting the T-Bolts into the Channel!!!

STEP 2

Start on the driver side front of the vehicle. Assemble Driver Front Mounting Bracket (**DFM/PRM**) and Driver Front Support Bracket (**DFS/PRS**) and Driver Front Support Bracket 1 (**DFS1/PRS1**) with (2) M8X1.25-25mm Hex Bolts, (1) M8X1.25-30mm Hex Bolt, (6) M8 Large Flat Washers, (3) M8 Lock Washers and (3) M8 Hex Nuts, (**Fig 1**).

Repeat for Driver Rear Mounting Bracket (**PFM/DRM**) and Driver Rear Support Bracket (**PFS/DRS**) and Driver Rear Support Bracket 1 (**PFS1/DRS1**) assembly.

(2) M8X1.25-25mm Hex Bolts
(4) M8 Large Flat Washers
(2) M8 Lock Washers
(2) M8 Hex Nuts



(1) M8X1.25-30mm Hex Bolt
(2) M8 Large Flat Washers
(1) M8 Lock Washer
(1) M8 Hex Nut

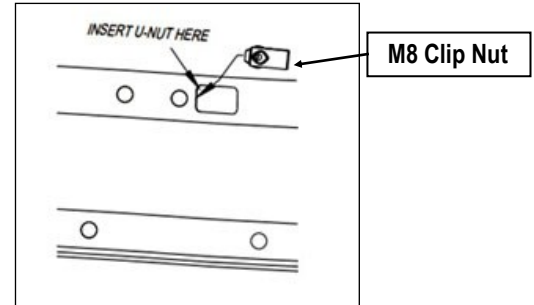
(Fig 1) Driver Side Front Brackets Assembly

iArmor®

STEP 3

Install M8 Clip Nut to square hole as shown, **(Fig 2)**. Attach the assembled brackets to the rocker panel with (1) M8X1.25-30mm Hex Bolt, (1) M8 Large Flat Washer and (1) M8 Lock Washer; to pinch weld with (2) M8X1.25-30mm Hex Bolts, (4) M8 Large Flat Washers, (2) M8 Lock Washers and (2) M8 Hex Nuts, **(Fig 3)**. Do not fully tighten hardware at this time.

Repeat for driver side rear brackets installation, **(Fig 3)**. Do not fully tighten hardware at this time.



(Fig 2) Install M8 Clip Nut

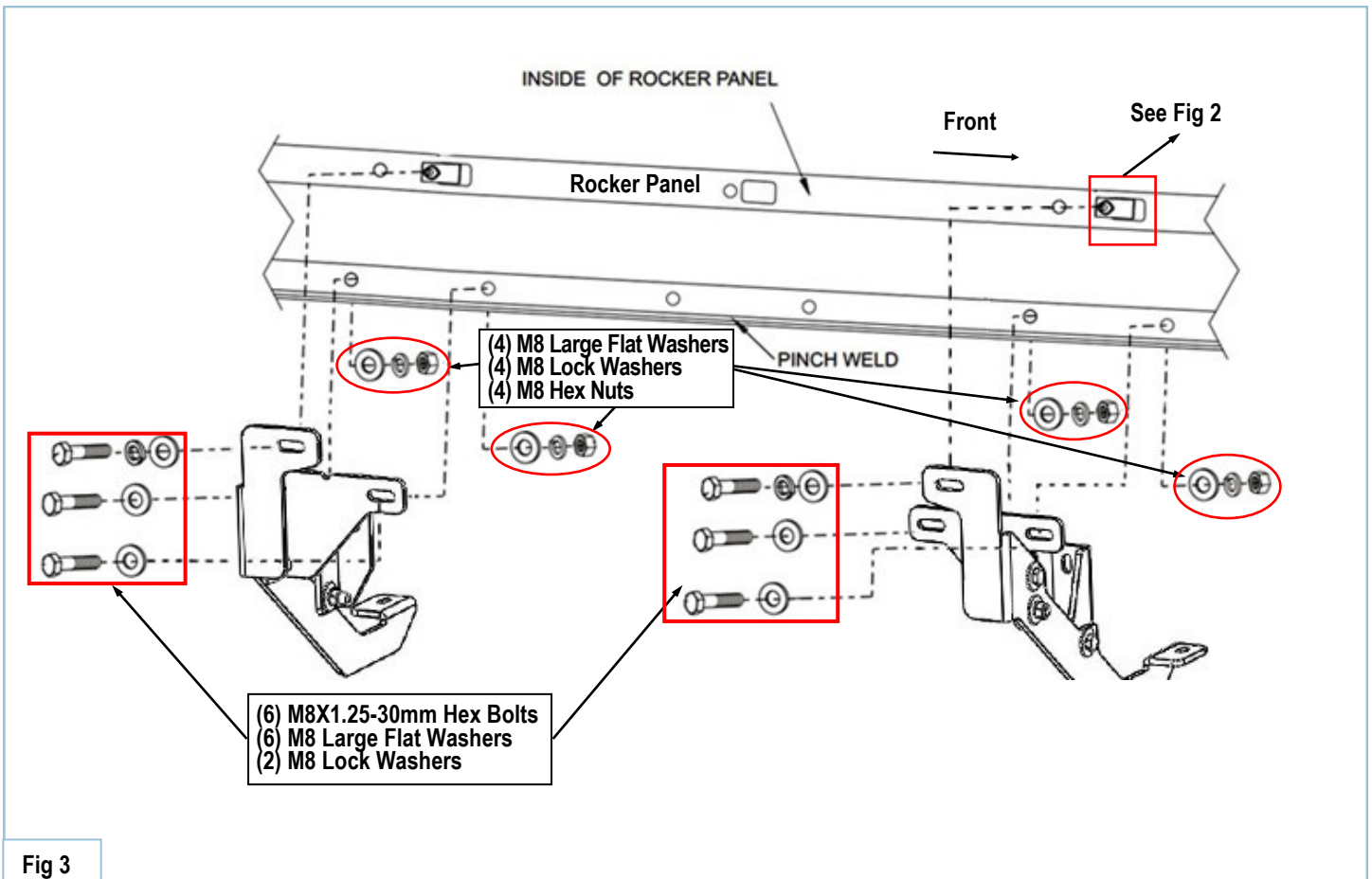


Fig 3

iArmor®

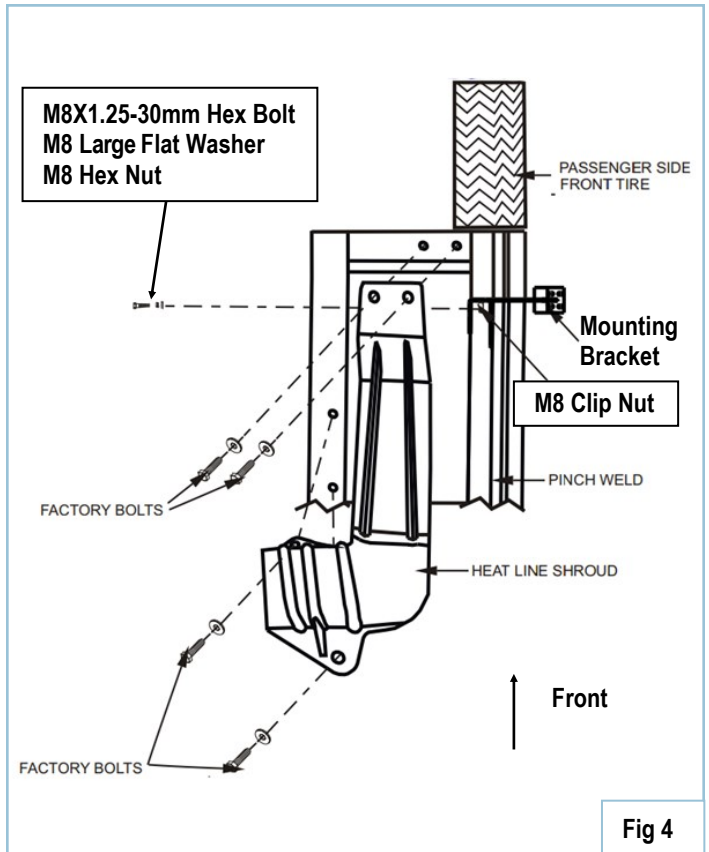
STEP 4

For jeep Commanders only: To attach the passenger side front bracket, remove the (4) bolts that secure the rear air and heat line shroud.

Remove the shroud to gain access to top mounting location on the bracket. After bracket is installed and fasteners are tightened, reattach shroud with the four existing bolts previously removed, (Fig 4).

STEP 5

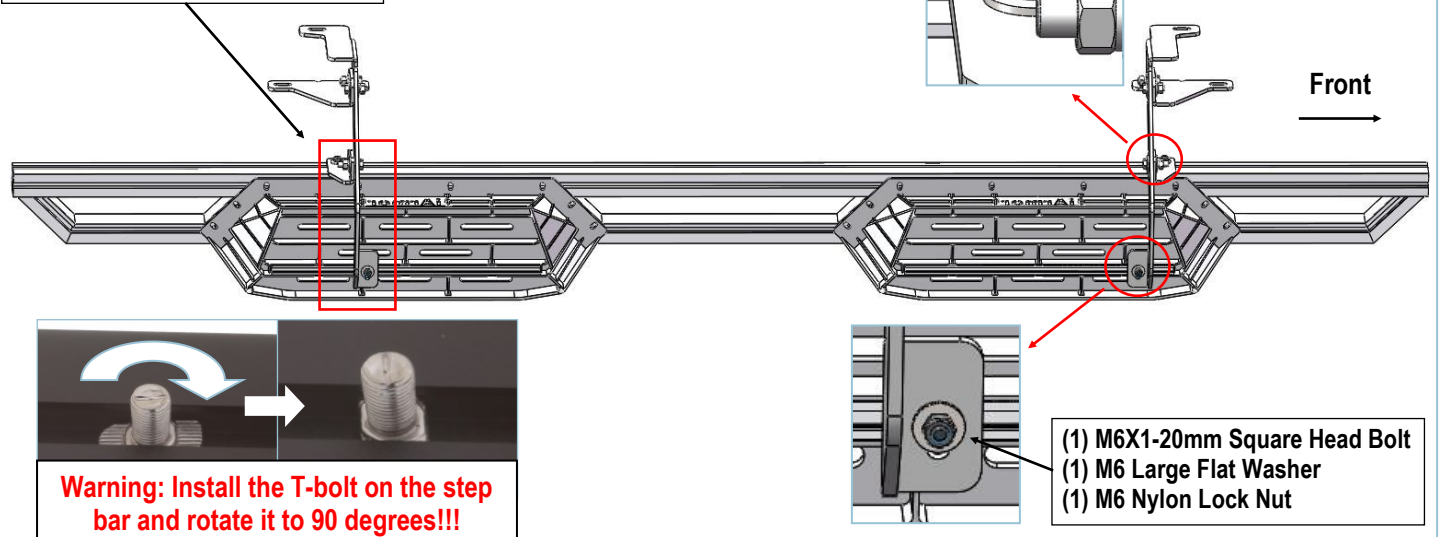
Once all (2) Driver side mounting brackets are installed, select and attach the Driver Side Step Bar onto the Mounting Brackets with (4) M6X1-20mm Square Head Bolts, (4) M6 Large Flat Washers and (4) M6 Nylon Lock Nuts, (Fig 5). Do not fully tighten hardware at this time.



(Fig 5) Driver Side Step Bar Installation

- (2) M6X1-20mm Square Head Bolts
- (2) M6 Large Flat Washers
- (2) M6 Nylon Lock Nuts

- (1) M6X1-20mm Square Head Bolt
- (1) M6 Large Flat Washer
- (1) M6 Nylon Lock Nut



iArmor®

STEP 6

Properly level and adjust the Step Bar and fully tighten all hardware.

STEP 7

Move to the other side of the vehicle. Repeat **Steps 1—6** for other side Step Bar installation.

Attention

Do periodic inspections to the installation to make sure that all hardware is secure and tight.

In order to protect your bars/boards, please use only mild soap/non-abrasive products for cleaning.