

## IARMOR EDGE™

PART#: IA-N107H

### BEFORE INSTALLATION

REMOVE CONTENTS FROM BOX. VERIFY ALL PARTS ARE PRESENT. READ INSTRUCTIONS CAREFULLY BEFORE STARTING INSTALLATION. ASSISTANCE IS RECOMMENDED. THANK YOU FOR CHOOSING OUR PRODUCT!

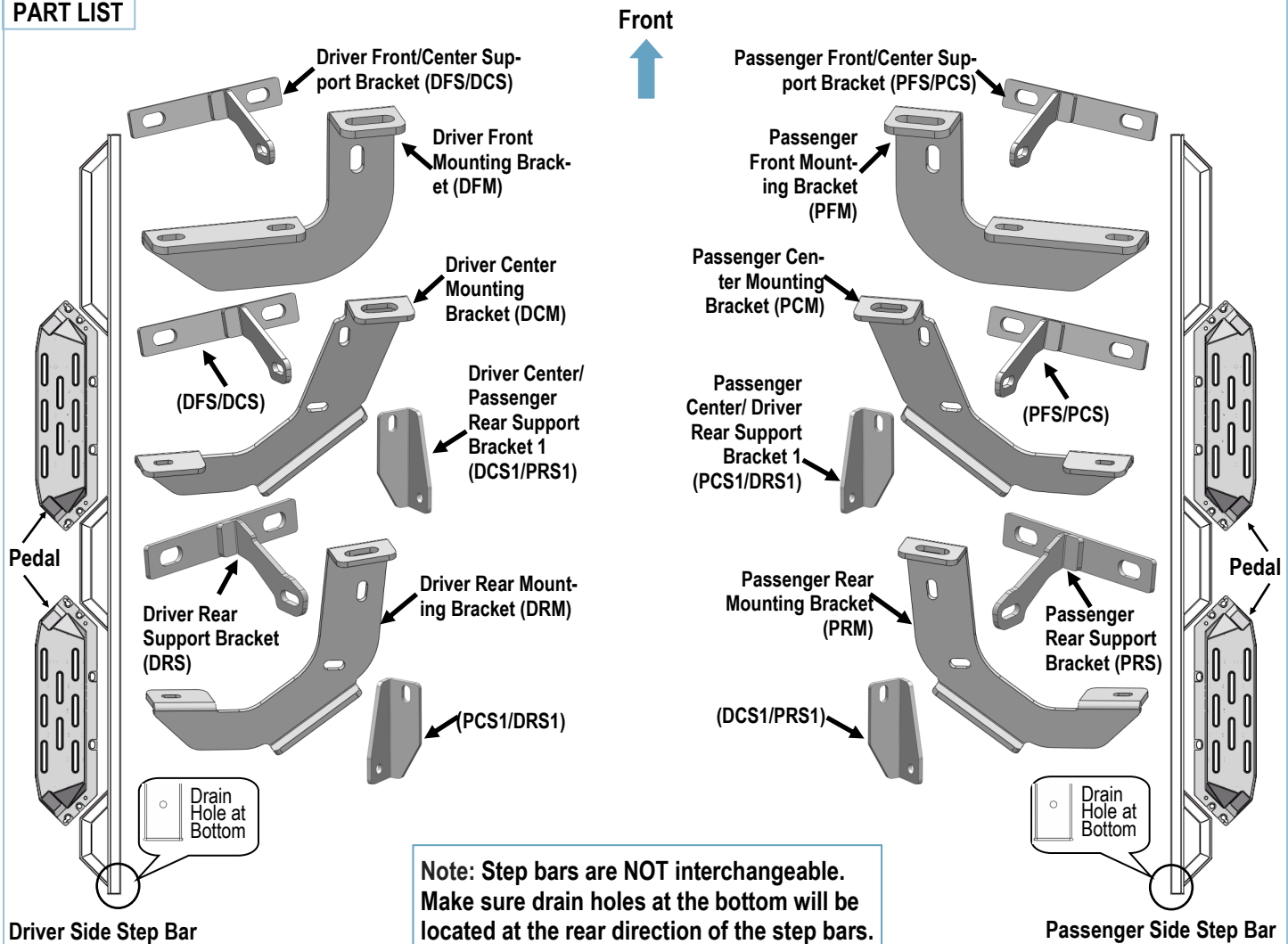
\*ROCKER PANEL MOUNT

\*DRILLING NOT REQUIRED

### Torque Value

Fastener Size	Tightening Torque (ft-lbs)	Required
6mm	6-7	√
8mm	16-18	√
10mm	31-32	X
12mm	56-58	X
14mm	92-94	X

### PART LIST



Customer Support: [info@iarmorauto.com](mailto:info@iarmorauto.com)

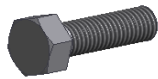
# iArmor®

## Hardware Package A (For Brackets & Bars Installation)

Item	QTY	Description	Item	QTY	Description
1#	6	M8X1.25 Nut Plates	7#	12	M6X1-25 Hex Bolts
2#	16	M8X1.25-35 Hex Bolts	8#	28	M6 Large Flat Washers
3#	6	M8 Large Flat Washers	9#	16	M6 Nylon Lock Nuts
4#	6	M8 Lock Washers	10#	4	M6X1-20 Square Head Bolts
5#	28	M8 Flat Washers	11#	8	M8X1.25-20 T-Bolts
6#	18	M8 Nylon Lock Nuts	12#	8	M8 Plastic Washers



1 #



2 #



3 #



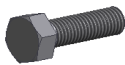
4 #



5 #



6 #



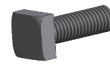
7 #



8 #



9 #



10 #



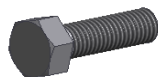
11 #



12 #

## Hardware Package B (For Step Pedals Installation)

Item	QTY	Description	Item	QTY	Description
1#	24	M8X1.25-25 Hex Bolts	3#	24	M8 Lock Washers
2#	24	M8 Large Flat Washers			



1#



2#



3#

Customer Support: [info@iarmorauto.com](mailto:info@iarmorauto.com)

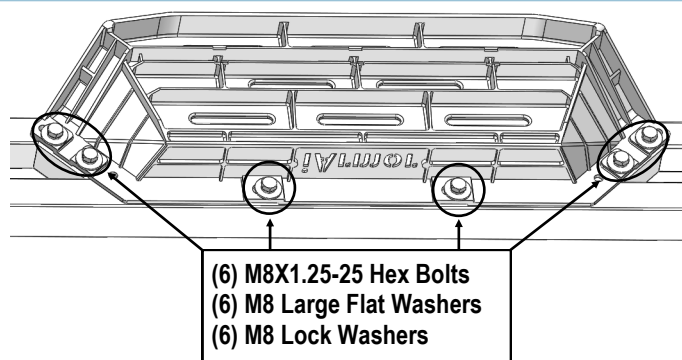
# iArmor®

The instruction here is for your reference only. We strongly recommend the professional installer for best result. We are not responsible for any damage caused by the installation.

## STEP 1

Install (4) Pedals onto the step bars with (24) M8X1.25-25mm Hex Bolts, (24) M8 Large Flat Washers and (24) M8 Lock Washers.

**IMPORTANT:** Don't punch the pedal with any metal hammer within pedal installation, or the pedal will be damaged.



## STEP 2

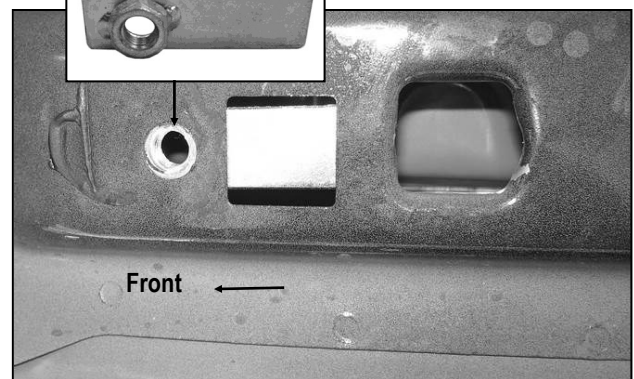
Start installation from the driver side front of the vehicle. Determine if the vehicle with open mounting locations or factory threaded holes in the floor panel.

### **A. Vehicles with open mounting location:**

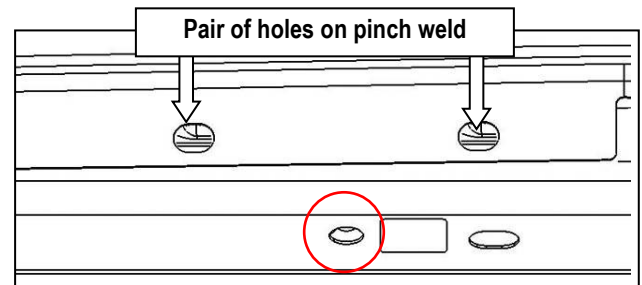
**a.** Insert (1) M8X1.25 Nut Plate into the large square opening in the floor panel. Line up the threaded nut with the hole in between the pair of holes on the pinch weld, (Fig 1A, 1B & 2).

**b.** Move along to the center/ rear mounting location, (Fig 3). Repeat **Step 2a** to insert the Nut Plate into the center/ rear opening on the floor panel.

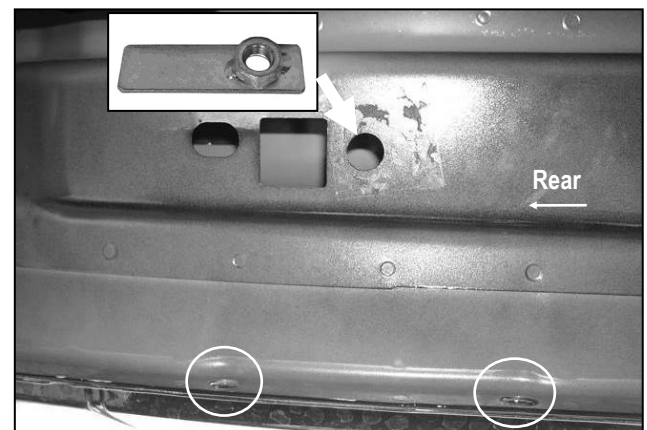
(Fig 1B) Nut Plate



(Fig 1A) Driver Side Front Mounting Location  
(Vehicles with open mounting location)



(Fig 2) Line up Nut Plate with hole in between the (2) holes on the pinch weld

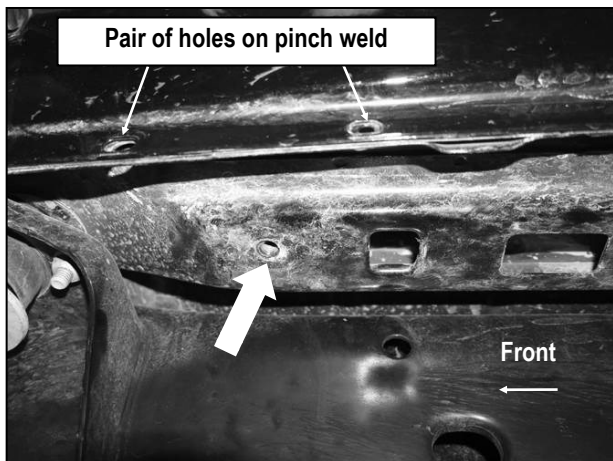


(Fig 3) Driver Side Center/Rear Mounting Location  
(Vehicles with open mounting location)

# iArmor®

## **B. Vehicles with factory threaded hole in floor panel:**

Locate the front, center and rear mounting locations, (Figs 4 & 5). Continue to **Step 3**.



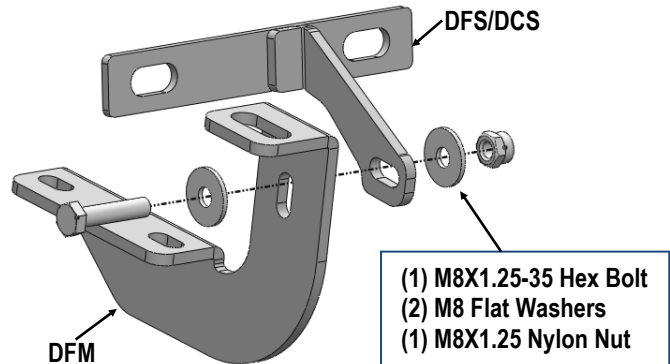
(Fig 4) Driver Side Front Mounting Location  
(Vehicles with factory threaded hole in floor panel)



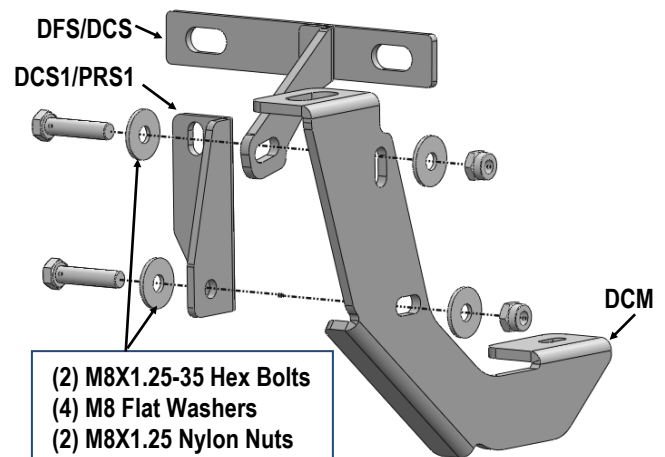
(Fig 5) Driver Side Center & Rear Mounting Location  
(Vehicles with factory threaded hole in floor panel)

## **STEP 3**

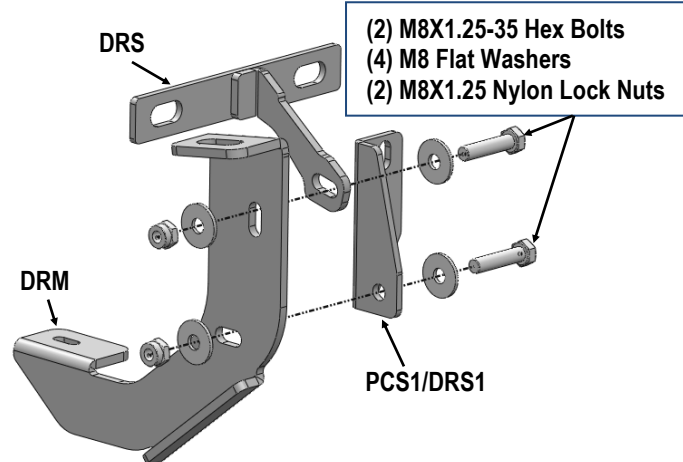
Assemble (3) Driver Side Mounting Brackets and Driver Side Support Brackets (Figs 6-8). Do not fully tighten hardware at this time.



(Fig 6) Driver Front Mounting Bracket Assembly



(Fig 7) Driver Center Mounting Bracket Assembly

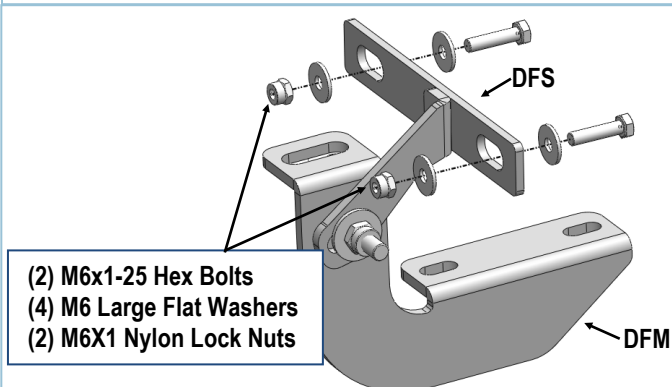


(Fig 8) Driver Rear Mounting Bracket Assembly

# iArmor®

## STEP 4

On Driver Side Front Mounting Location. Attach the Driver Support Bracket (DFS) on the **back** of the pinch weld. Secure to the (2) pairs of holes on the pinch weld with (2) M6X1-25 Hex Bolts, (4) M6 Large Flat Washers & (2) M6X1 Nylon Lock Nuts, (Figs 9 & 10). Don't fully tighten hardware at this time.



(Fig 9) Driver Front Support Bracket Installation

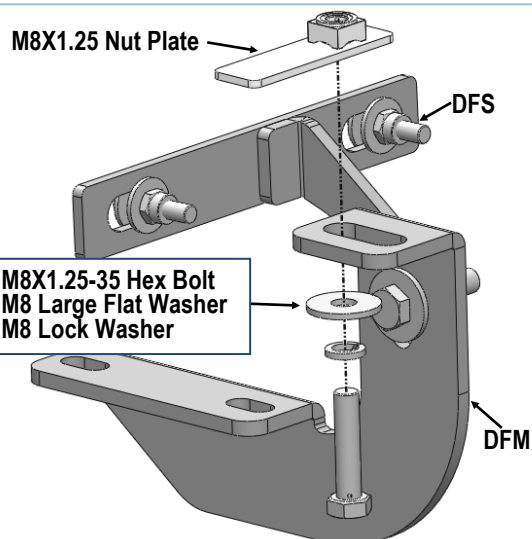


(Fig 10) Driver Front Support Bracket Installed

## STEP 5

### Vehicles with open mounting location:

Bolt the Driver Front Mounting Bracket to the M8X1.25 Nut Plate with (1) M8X1.25-35 Hex Bolt, (1) M8 Lock Washer and (1) M8 Large Flat Washer, (Fig 11). Do not fully tighten hardware at this time.

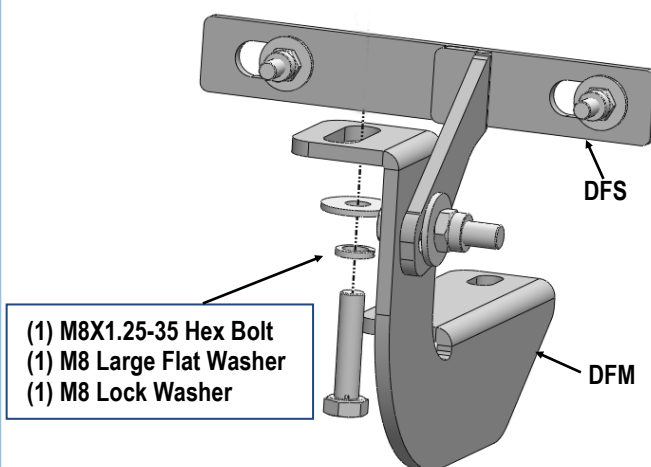


(Fig 11) Driver Front Mounting Bracket Installation  
(Vehicles with open mounting location)

## STEP 6

### Vehicles with factory threaded hole in floor panel:

Bolt the Mounting Bracket to the threaded hole in the floor panel with (1) M8X1.25-35 Hex Bolt, (1) M8 Large Flat Washer, (1) M8 Lock Washer, (Figs 12 & 13). Do not fully tighten hardware at this time.



(Fig 12) Driver Front Mounting Bracket Installation  
(Vehicles with factory threaded hole in floor panel)



# iArmor®

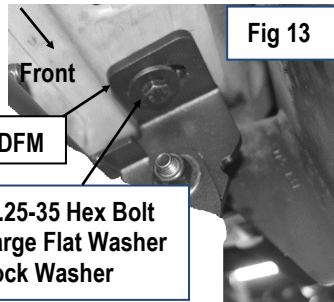
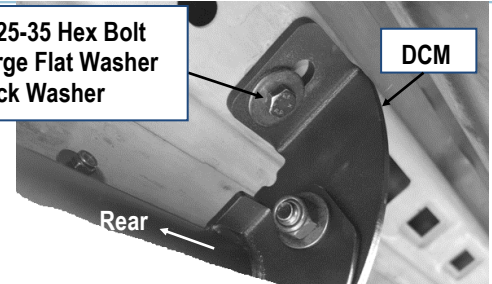


Fig 13

- (1) M8X1.25-35 Hex Bolt
- (1) M8 Large Flat Washer
- (1) M8 Lock Washer

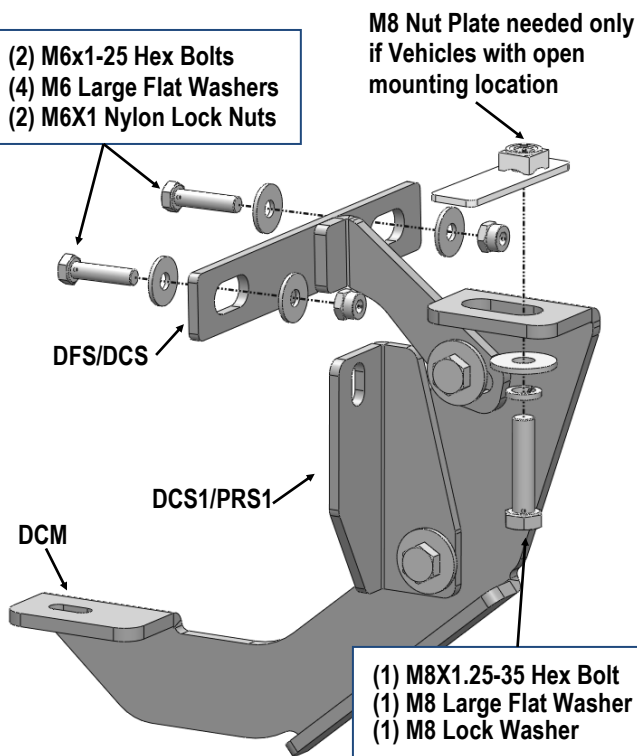
- (1) M8X1.25-35 Hex Bolt
- (1) M8 Large Flat Washer
- (1) M8 Lock Washer



(Fig 15) Driver Center Mounting Bracket Installed

## STEP 7

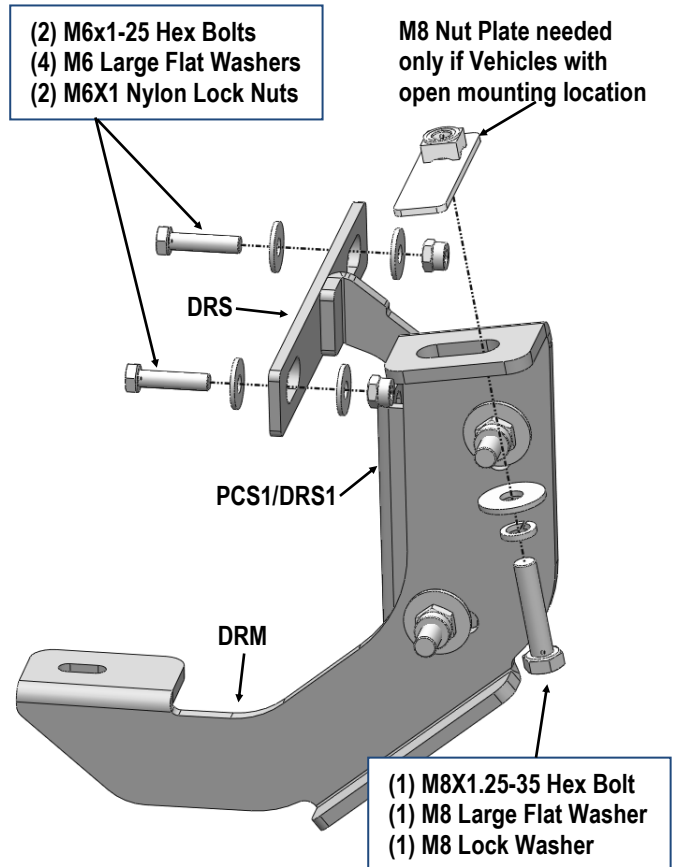
Repeat **steps 4-6** to install the Assembled Driver Center Mounting Bracket, (**Figs 14-15**). M8 Nut Plate needed only on Vehicles with open mounting location. Do not fully tighten hardware at this time.



(Fig 14) Driver Center Mounting Bracket Installation

## STEP 8

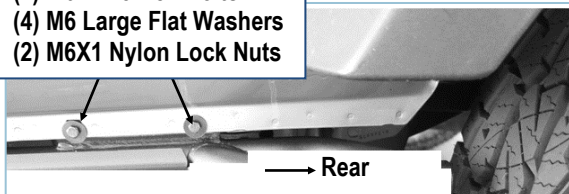
Repeat **steps 4-6** to install the Assembled Driver Rear Mounting Bracket, (**Figs 16-18**). Do not fully tighten hardware at this time.



(Fig 16) Driver Rear Support Bracket Installation

# iArmor®

- (2) M6x1-25 Hex Bolts
- (4) M6 Large Flat Washers
- (2) M6X1 Nylon Lock Nuts

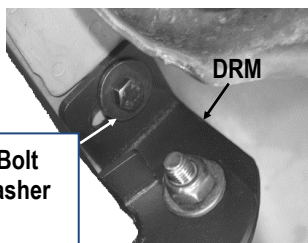


(Fig 17) Driver Rear Support Bracket Mounted to Pinch Weld

Rear

DRM

- (1) M8X1.25-35 Hex Bolt
- (1) M8 Large Flat Washer
- (1) M8 Lock Washer

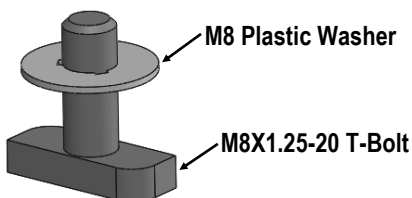


(Fig 18) Driver Rear Mounting Bracket Installed

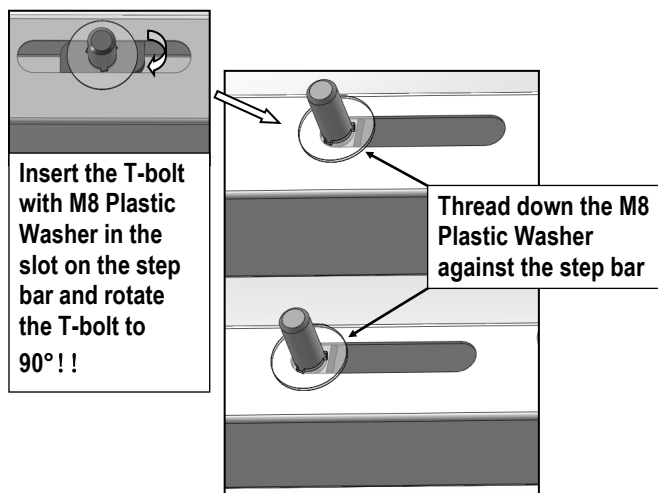
## STEP 9

Once all (3) brackets have been installed, select (4) M8X1.25-20mm T-Bolts, thread (1) M8 Plastic Washer on each T-Bolt, (Fig 19). Install the (4) M8X1.25-20mm T-Bolts with plastic washers in the slots on the assembled step bar. Rotate the T-Bolts to 90 degree, thread down the M8 Plastic Washers against the step bar (Fig 20).

**NOTE:** The Plastic Washer is designed to keep the T-Bolt in place to avoid falling into the tube during installation.



(Fig 19) Thread (1) M8 Plastic Washer on each T-Bolt Before Inserting into the slot !!!



(Fig 20) T-Bolt with plastic washer in the slot

## STEP 10

Attach the Assembled Driver Side Step Bar onto the Mounting Brackets with (4) M8 Plastic Washers, (4) M8X1.25-20mm T-Bolts, (4) M8 Large Flat Washers, (4) M8 Nylon Lock Nuts, (Fig 21). Do not fully tighten hardware at this time.

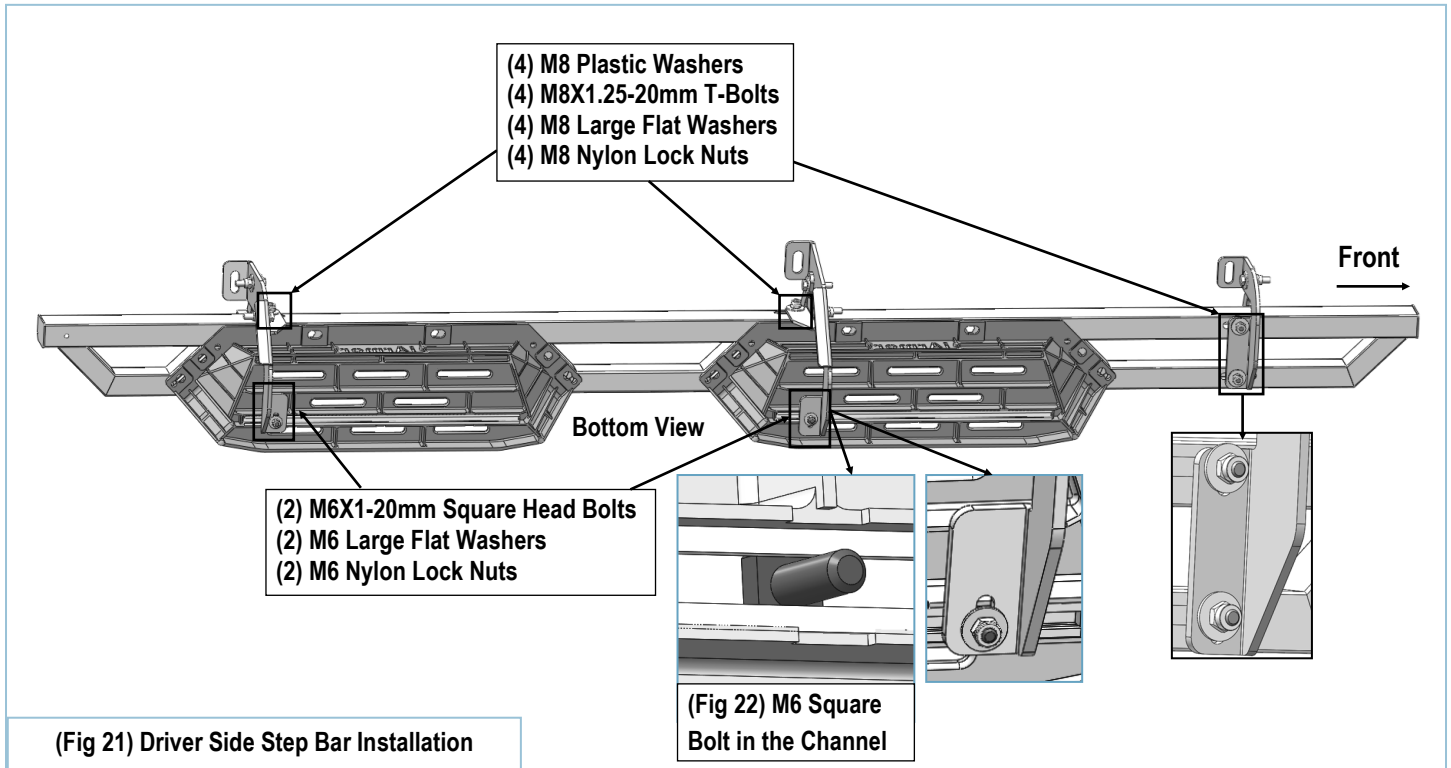
**NOTE:** Driver Center & Rear Mounting Bracket are located under (2) pedals. Slide (2) M6X1-20mm Square Head Bolts into the channels at the bottom of pedals (Fig 22). And secure the Driver Center & Rear Mounting Brackets to pedals with (2) M6 Large Flat Washers and (2) M6 Nylon Lock Nuts, (Fig 21). Do not fully tighten hardware at this time.

## STEP 11

Level and adjust the assembled Step Bar properly and tighten all hardware.

Move to the other side of the vehicle. Repeat **Steps 2-10** for the other Side Step Bar installation.

# iArmor®



## Attention

Do periodic inspections to the installation to make sure that all hardware is secure and tight.  
In order to protect your bars/boards, please use mild soap/non-abrasive products for cleaning only.