

## IARMOR EDGE™

PART#: IA-N115H

### BEFORE INSTALLATION

REMOVE CONTENTS FROM BOX. VERIFY ALL PARTS ARE PRESENT. READ INSTRUCTIONS CAREFULLY BEFORE STARTING INSTALLATION. ASSISTANCE IS RECOMMENDED. THANK YOU FOR CHOOSING OUR PRODUCT!

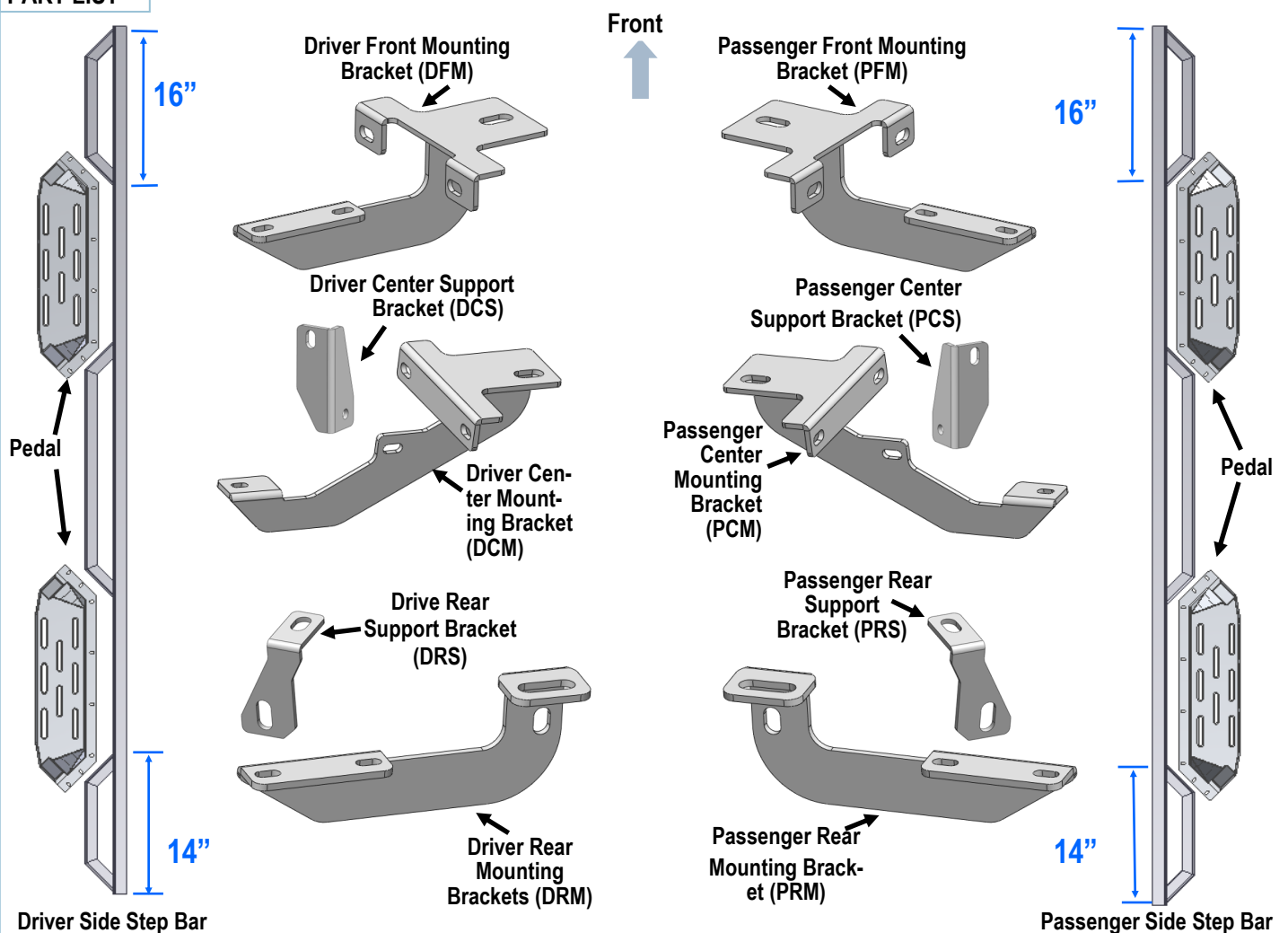
**\*ROCKER PANEL MOUNT**

**\*NO DRILLING/TRIMMING REQUIRED**

### Torque Value

Fastener Size	Tightening Torque (ft-lbs)	Required
6mm	6-7	√
8mm	16-18	√
10mm	31-32	X
12mm	56-58	X
14mm	92-94	X

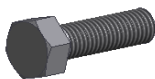
### PART LIST



# iArmor®

## Hardware Package A (For Brackets & Bars Installation)

Item	QTY	Description	Item	QTY	Description
1#	10	M8X1.25-35 Hex Bolts	7#	22	M6 Large Flat Washers
2#	6	M8 Large Flat Washers	8#	12	M6X1 Nylon Lock Nuts
3#	18	M8 Flat Washers	9#	2	M6X1-20 Square Head Bolts
4#	6	M8 Lock Washers	10#	10	M8X1.25-20 T Bolts
5#	14	M8 Nylon Lock Nuts	11#	10	M8 Plastic Washers
6#	10	M6X1-25 Hex Bolts			



1#



2#



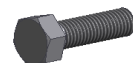
3#



4#



5#



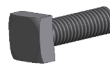
6#



7#



8#



9#



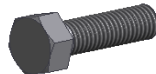
10#



11#

## Hardware Package B (For Step Pedals Installation)

Item	QTY	Description	Item	QTY	Description
1#	24	M8X1.25-25 Hex Bolts	3#	24	M8 Lock Washers
2#	24	M8 Large Flat Washers			



1#



2#



3#

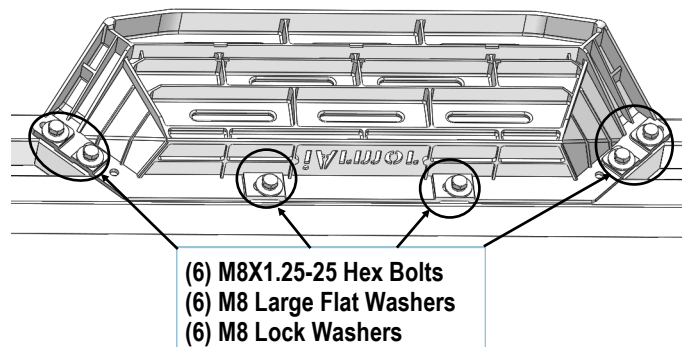
# iArmor®

The instruction here is for your reference only. We strongly recommend the professional installer for best result. We are not responsible for any damage caused by the installation.

## STEP 1

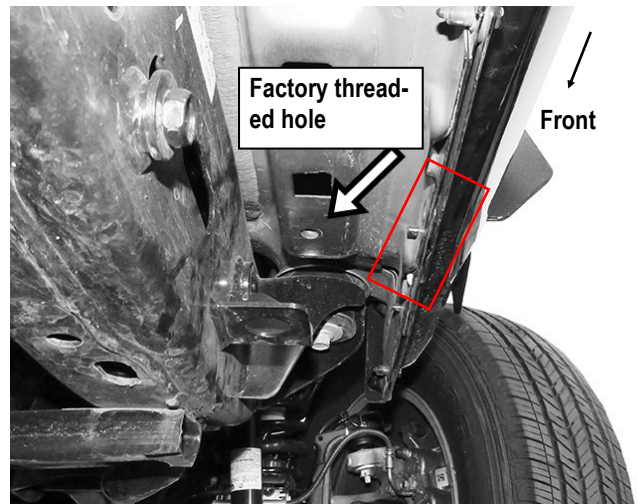
Install (4) Pedals onto the step bars with (24) M8X1.25-25mm Hex Bolts, (24) M8 Large Flat Washers and (24) M8 Lock Washers.

**IMPORTANT:** Don't hit the pedal with any metal hammer within pedal installation, or the pedal will be damaged.



## STEP 2

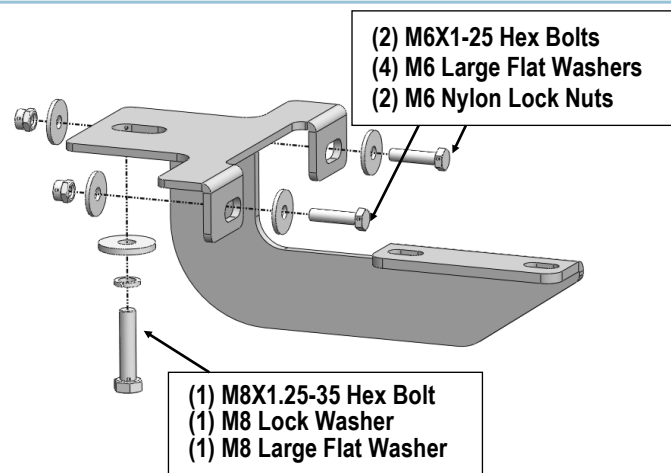
Start installation from the passenger side front of the vehicle. Locate the factory threaded mounting hole at the bottom of the floor, and (2) holes on the pinch weld, (Fig 1).



(Fig 1) Passenger Side Front Mounting Location

## STEP 3

Select the Passenger Front Mounting Bracket (PFM). Attach the top of the Passenger Front Mounting Bracket to the threaded hole in the bottom of the floor panel with (1) M8X1.25-35 Hex Bolt, (1) M8 Lock Washer and (1) M8 Large Flat Washer (Fig 2). Attach the lower (2) holes to the pinch weld with (2) M6X1-25 Hex Bolts, (4) M6 Large Flat Washers and (2) M6 Nylon Lock Nuts. Do not fully tighten hardware at this time.

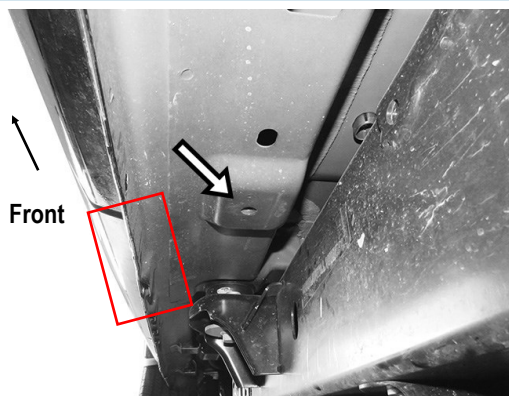


(Fig 2) Passenger Front Mounting Bracket Installation

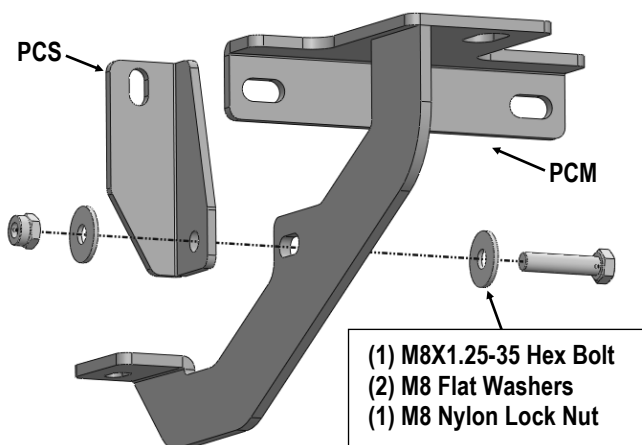
## STEP 4

Move to the passenger side center mounting location, (Fig 3). Assemble Passenger Center Mounting Bracket (PCM) and Passenger Center Support Bracket (PCS) with (1) M8X1.25-35 Hex Bolt, (2) M8 Flat Washers and (1) M8 Nylon Lock Nut, (Fig 4).

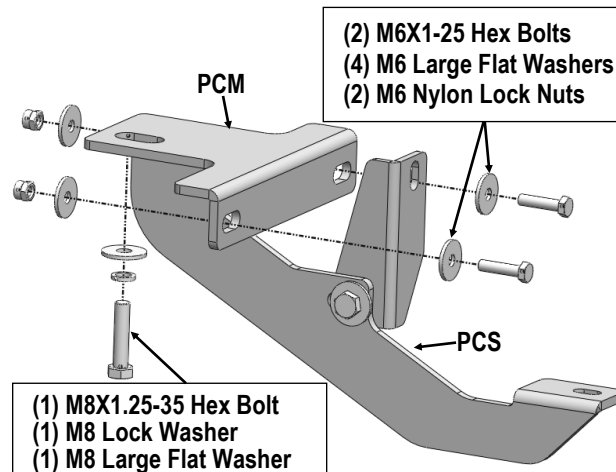
Repeat **Step 3** to install the assembled passenger center mounting bracket on the mounting location, (Fig 5). Do not fully tighten hardware at this time.



(Fig 3) Passenger Side Center Mounting Location



(Fig 4) Passenger Center Mounting Bracket Assembly

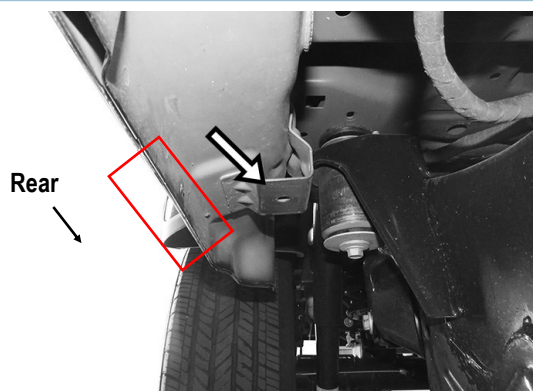


(Fig 5) Passenger Center Bracket Installation

## STEP 5

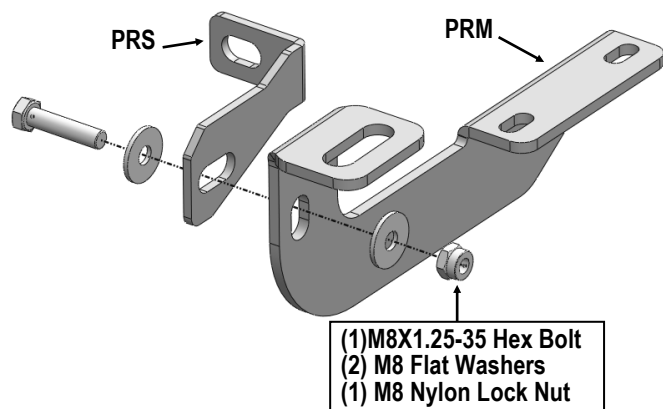
Move to the rear mounting location (Fig 6). Assemble Passenger Rear Mounting Bracket (PRM) and Passenger Rear Support Bracket (PRS) with (1) M8X1.25-35 Hex Bolt, (2) M8 Flat Washers and (1) M8 Nylon Lock Nut, (Fig 7).

Attach the top of the Assembled Passenger Rear Mounting Bracket to the threaded hole in the bottom of the floor panel with (1) M8X1.25-35 Hex Bolt, (1) M8 Lock Washer and (1) M8 Large Flat Washer (Fig 8). Attach Passenger Rear Support Bracket (PRS) on the pinch weld with (1) M6X1-25 Hex Bolt, (2) M6 Flat Washers and (1) M6 Nylon Lock Nut. Leave hardware loose at this time.

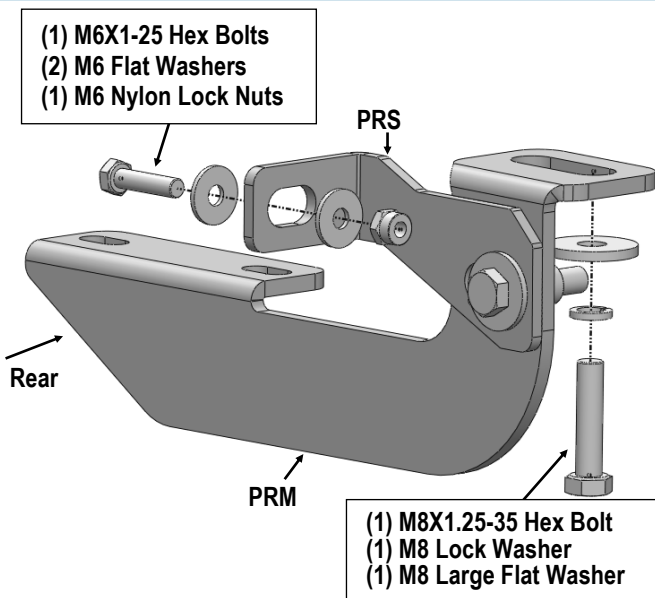


(Fig 6) Passenger Side Rear Mounting Location

# iArmor®



(Fig 7) Passenger Rear Mounting Bracket Assembly



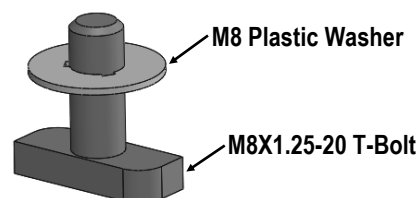
(Fig 8) Passenger Rear Bracket Installation

## STEP 7

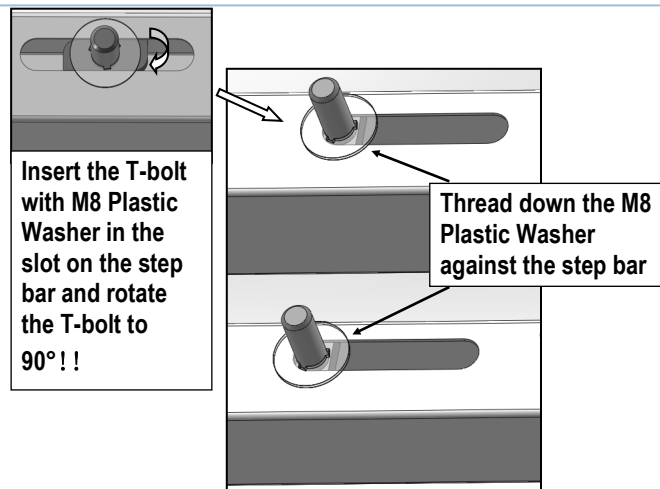
Once (3) brackets have been installed, select (5) M8X1.25-20mm T-Bolts, thread (1) M8 Plastic Washer on each T-Bolt, (Fig 9). Install the (5) M8X1.25-20mm T-Bolts with plastic washers in the slots on the assembled Passenger side step

bar. Rotate the T-Bolts to 90 degree, thread down the M8 Plastic Washers against the step bar (Fig 10).

**NOTE:** The Plastic Washer is designed to keep the T-Bolt from falling into the bar tube during installation.



(Fig 9) Thread (1) M8 Plastic Washer on each T-Bolt Before Inserting into the bar tube!!!



(Fig 10) T-Bolt with plastic washer in the slot

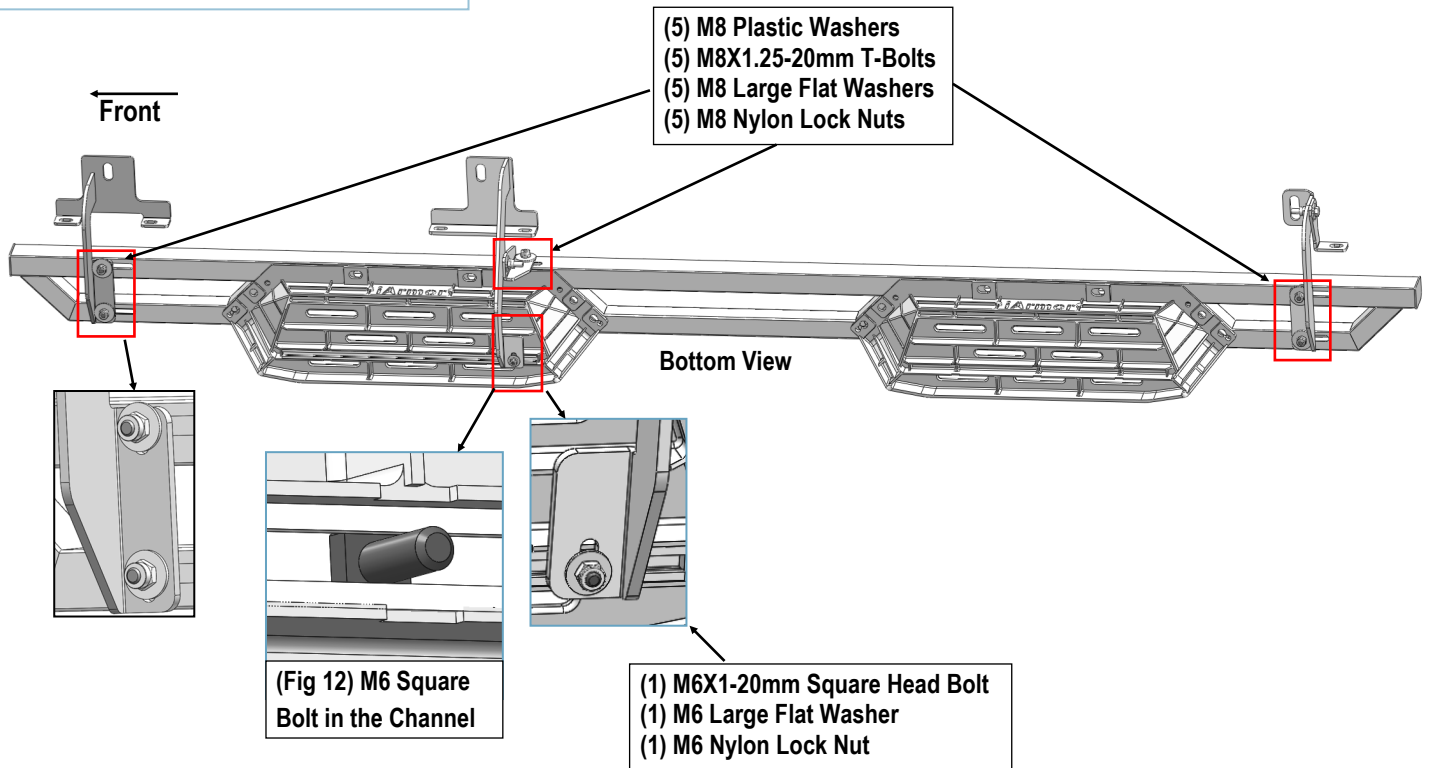
## STEP 8

Attach the Assembled Passenger Side Step Bar onto the Mounting Brackets with (5) M8 Plastic Washers, (5) M8X1.25-20mm T-Bolts, (5) M8 Large Flat Washers, (5) M8 Nylon Lock Nuts, (Fig 11). Do not fully tighten hardware at this time.

**NOTE:** the Passenger Center Mounting Bracket is located under the front pedal. Slide (1) M6X1-20mm Square Head Bolt into the channel at the bottom of the front pedal (Fig 12). Secure the Passenger Center Mounting Bracket to the pedal with (1) M6 Large Flat Washer and (1) M6 Nylon Lock Nut, (Fig 11).

# iArmor®

(Fig 11) Passenger Side Step Installation



## STEP 9

Level and adjust the assembled Step Bar properly and tighten all hardware.

Move to the other side of the vehicle. Repeat **Steps 2-8** for the other side step bar installation.

### Attention

**Do periodic inspections to the installation to make sure that all hardware is secure and tight.**

**In order to protect your bars/boards, please use mild soap/non-abrasive products for cleaning only.**