

iArmor[®]

iArmor[®] by APS

PART#: IA-S352H

BEFORE INSTALLATION

REMOVE CONTENTS FROM BOX. VERIFY ALL PARTS ARE PRESENT. READ INSTRUCTIONS CAREFULLY BEFORE STARTING INSTALLATION. ASSISTANCE IS RECOMMENDED. THANK YOU FOR CHOOSING OUR PRODUCT!

*ROCKER PANEL MOUNT

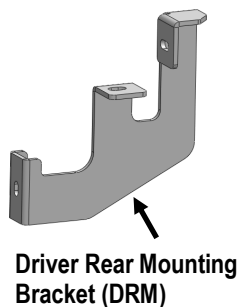
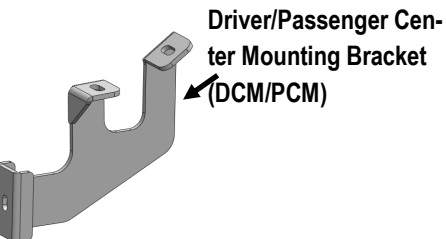
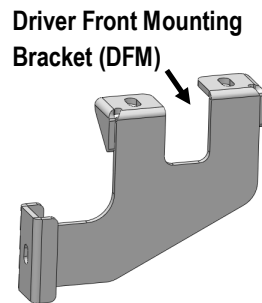
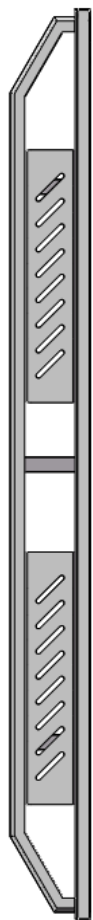
*DRILLING NOT REQUIRED

Torque Value

Fastener Size	Tightening Torque (ft-lbs)	Required
6mm	6-7	X
8mm	16-18	√
10mm	31-32	X
12mm	56-58	X
14mm	92-94	X

PART LIST

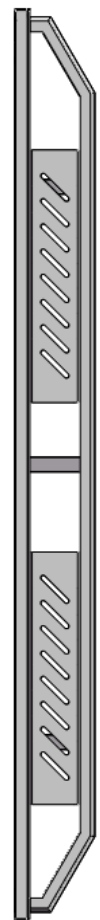
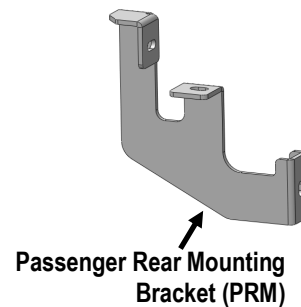
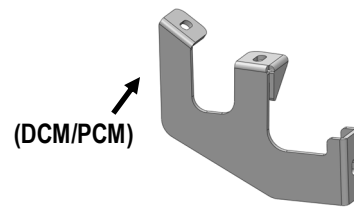
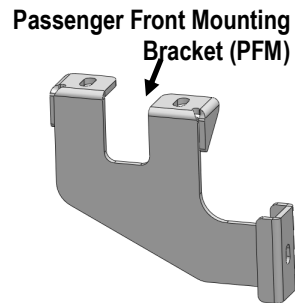
Driver Side Step Bar



Front



Passenger Side Step Bar

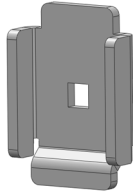


Customer Support: info@iarmorauto.com

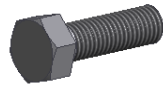
iArmor®

Hardware Package A (For Bracket Installation)

Item	QTY	Description	Item	QTY	Description
1#	6	U Brackets	3#	12	M8 Large Flat Washers
2#	12	M8X1.25-25mm Hex Bolts	4#	12	M8 Lock Washers



1#



2#



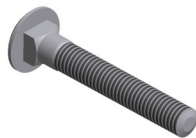
3#



4#

Hardware Package B (For Step Bar Installation)

Item	QTY	Description	Item	QTY	Description
1#	6	M8X1.25-55mm Carriage Bolts	3#	6	M8 Lock Washers
2#	6	M8 Large Flat Washers	4#	6	M8 Hex Nuts



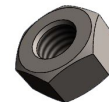
1#



2#



3#



4#

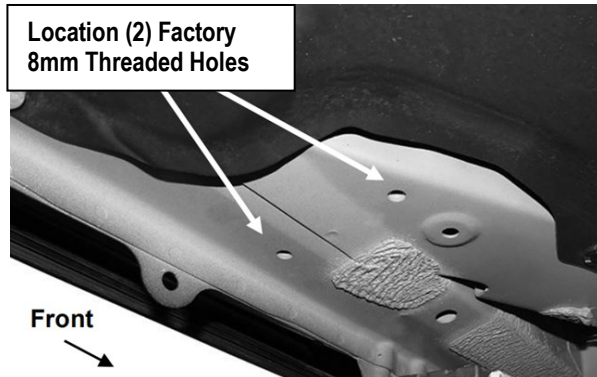
iArmor®

The instruction here is for your reference only. We strongly recommend the professional installer for best result. We are not responsible for any damage caused by the installation.

STEP 1

Starting on the driver side front of the vehicle, locate the (2) factory 8mm threaded holes at the bottom of the floor panel, (Fig 1).

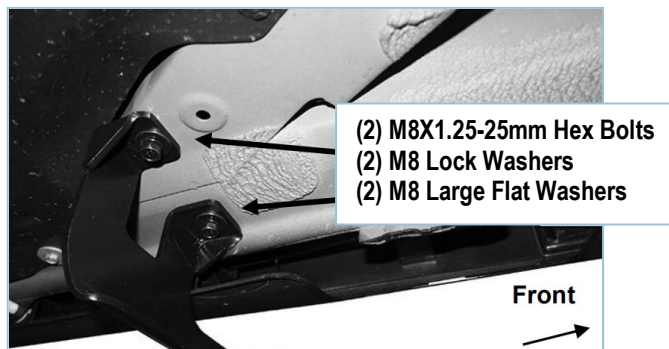
NOTE: Threaded holes may be covered with insulation. Clean mounting locations as required for proper Bracket installation.



(Fig 1) Driver Side Front Mounting Location

STEP 2

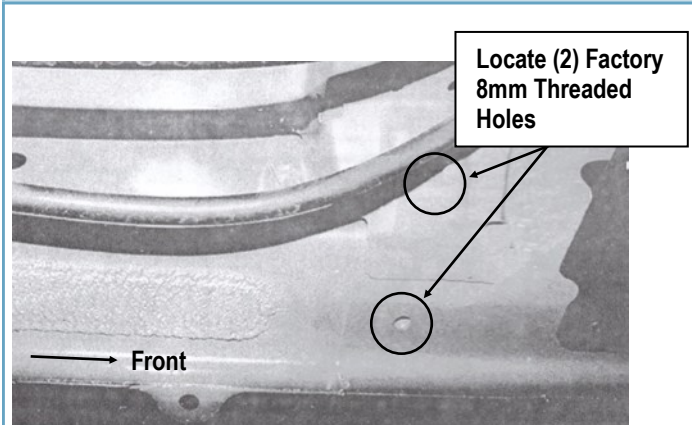
Select (1) Driver Front Mounting Bracket (DFM). **NOTE:** Attach the Bracket to the two threaded holes with (2) M8X1.25-25mm Hex Bolts, (2) M8 Large Flat Washers, (2) M8 Lock Washers, (Fig 2). Do not fully tighten hardware at this time.



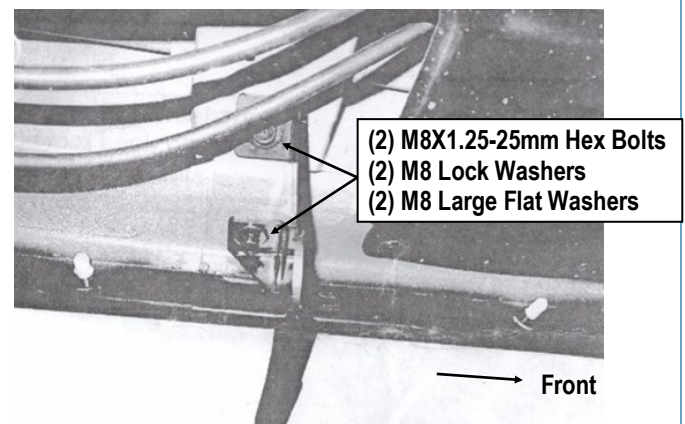
(Fig 2) Driver Front Mounting Bracket (DFM) Installation

STEP 3

Move to Driver side center mounting location, (Fig 3). Repeat **Step 2** to bolt the Driver Center Mounting Bracket to the factory threaded holes, (Fig 4). Do not fully tighten hardware at this time.



(Fig 3) Driver Side Center Mounting Location

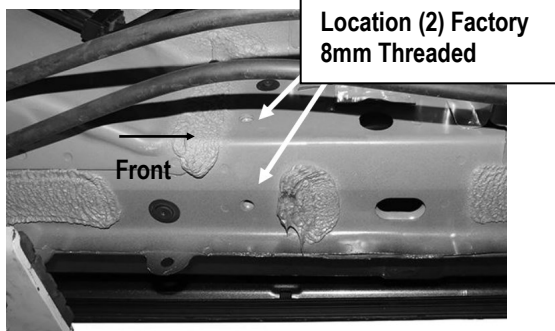


(Fig 4) Driver Center Mounting Bracket Installation

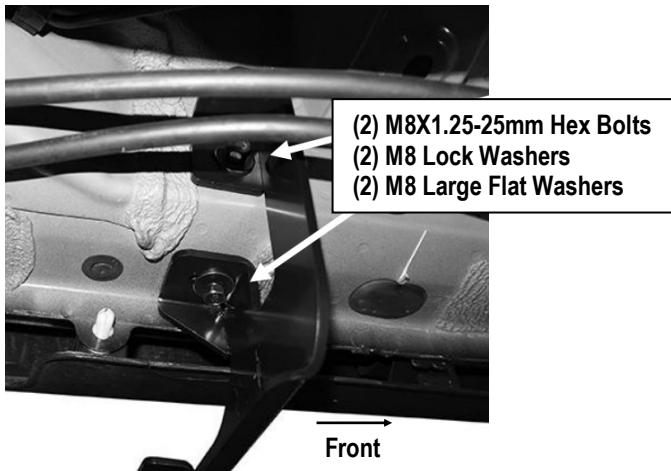
STEP 4

Next, move to Driver side rear mounting location, (Fig 5). Repeat **Step 2** to bolt the Driver Rear Mounting Bracket to the factory threaded holes, (Fig 6). Do not fully tighten hardware at this time.

iArmor®



(Fig 5) Driver Side Rear Mounting Location



(Fig 6) Driver Rear Mounting Bracket Installation

STEP 5

Once all (3) driver side mounting brackets are installed, select and attach the Driver Side Step Bar onto the Mounting Brackets with (3) U Brackets, (3) M8X1.25-55mm Carriage Bolts, (3) M8 Large Flat Washers, (3) M8 Lock Washers and (3) M8X1.25 Hex Nuts, (Fig 7). Do not fully tighten hardware at this time.

STEP 6

Properly level and adjust the Step Bar and fully tighten all hardware.

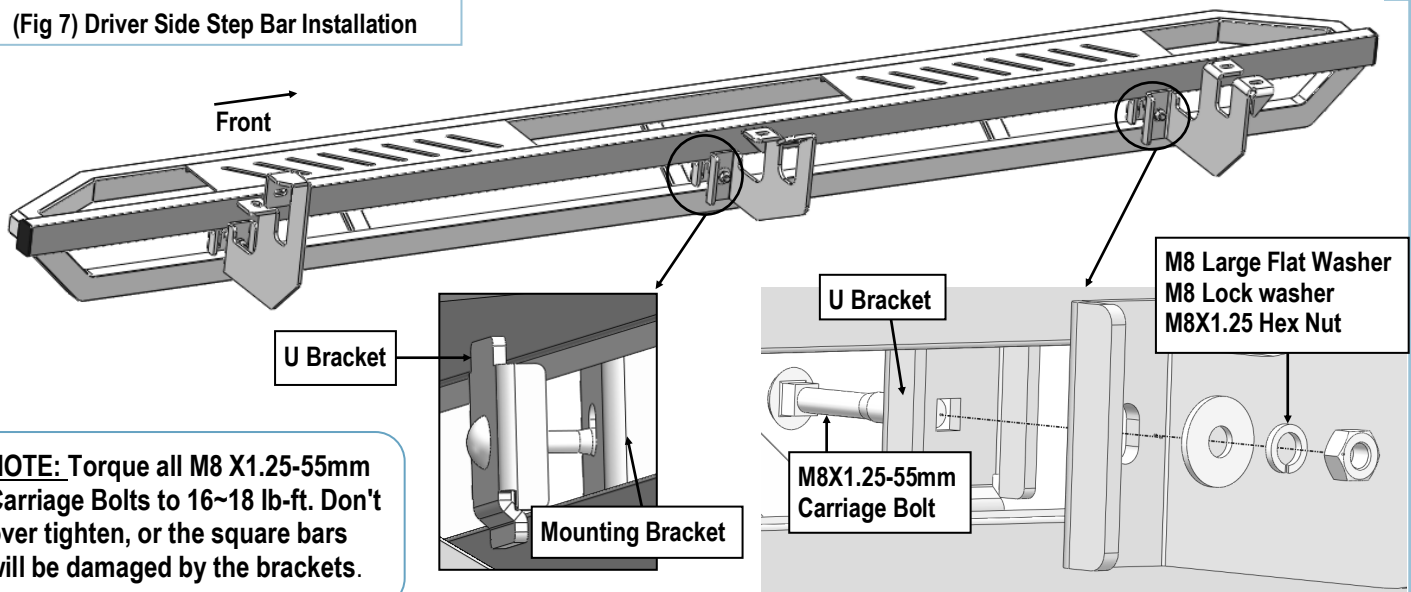
STEP 7

Move to the passenger side of the vehicle. Repeat **Steps 1-6** to install passenger side step bar. Installation completed.

Attention

Do periodic inspections to the installation to make sure that all hardware is secure and tight. In order to protect your bars/boards, please use mild soap/non-abrasive products for cleaning only.

(Fig 7) Driver Side Step Bar Installation



NOTE: Torque all M8 X1.25-55mm Carriage Bolts to 16~18 lb-ft. Don't over tighten, or the square bars will be damaged by the brackets.