

iArmor[®]

iArmor[®] by APS

PART#: IA-S352

BEFORE INSTALLATION

REMOVE CONTENTS FROM BOX. VERIFY ALL PARTS ARE PRESENT. READ INSTRUCTIONS CAREFULLY BEFORE STARTING INSTALLATION. ASSISTANCE IS RECOMMENDED. THANK YOU FOR CHOOSING OUR PRODUCT!

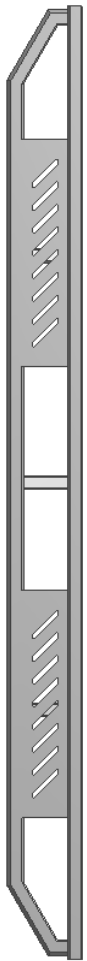
***ROCKER PANEL MOUNT**

***NO DRILLING / TRIMMING REQUIRED**

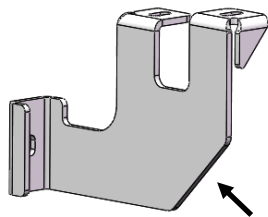
Torque Value

Fastener Size	Tightening Torque (ft-lbs)	Required
6mm	6-7	X
8mm	16-18	√
10mm	31-32	X
12mm	56-58	X
14mm	92-94	X

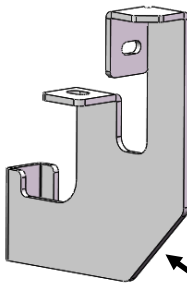
PART LIST



Driver Side Step Bar

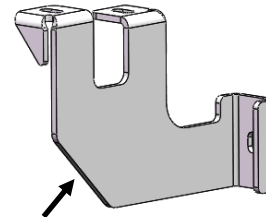


Driver Front Mounting Bracket (DFM)

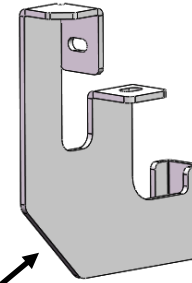


Driver Rear Mounting Bracket (DRM)

Front
↑



Passenger Front Mounting Bracket (PFM)



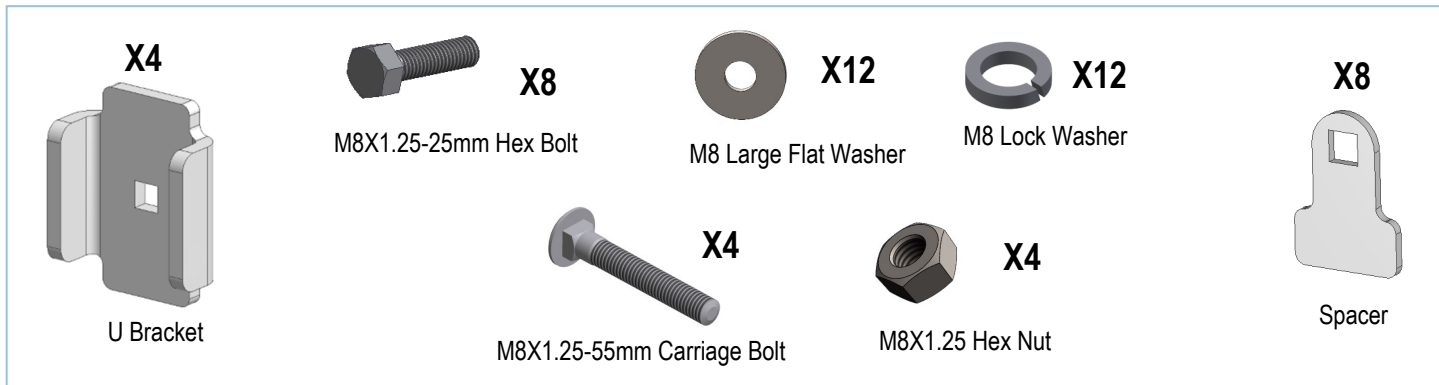
Passenger Rear Mounting Bracket (PRM)



Passenger Side Step Bar

Customer Support: info@iarmorauto.com

iArmor®



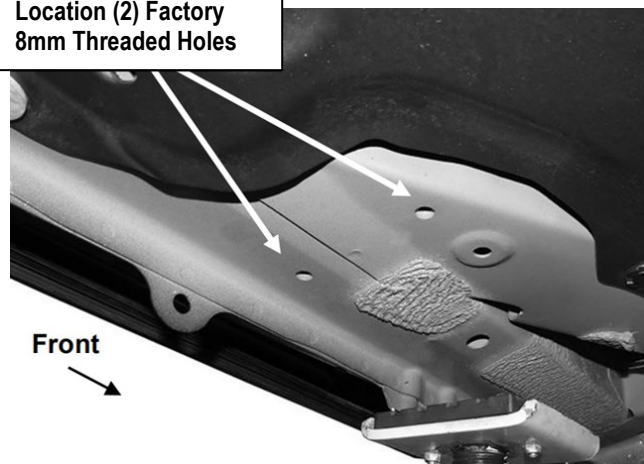
The instruction here is for your reference only. We strongly recommend the professional installer for best result. We are not responsible for any damage caused by the installation.

STEP 1

Starting on the driver side front of the vehicle, locate the (2) factory 8mm threaded holes at the bottom of the floor panel, (Fig 1).

NOTE: Threaded holes may be covered with insulation. Clean mounting locations as required for proper Bracket installation.

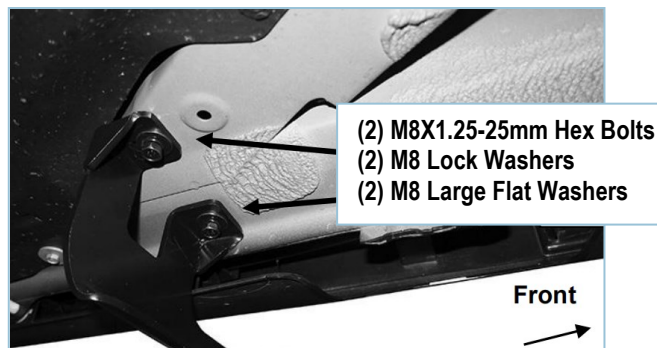
Location (2) Factory 8mm Threaded Holes



(Fig 1) Driver Side Front Mounting Location

STEP 2

Select (1) Driver Front Mounting Bracket (DFM). **NOTE:** Attach the Bracket to the two threaded holes with (2) M8X1.25-25mm Hex Bolts, (2) M8 Large Flat Washers, (2) M8 Lock Washers, (Fig 2). Do not fully tighten hardware at this time.

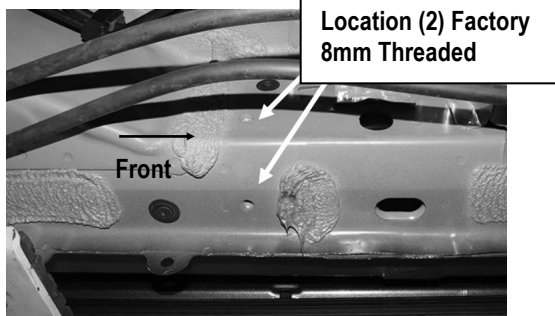


(Fig 2) Driver Front Mounting Bracket (DFM) Installation

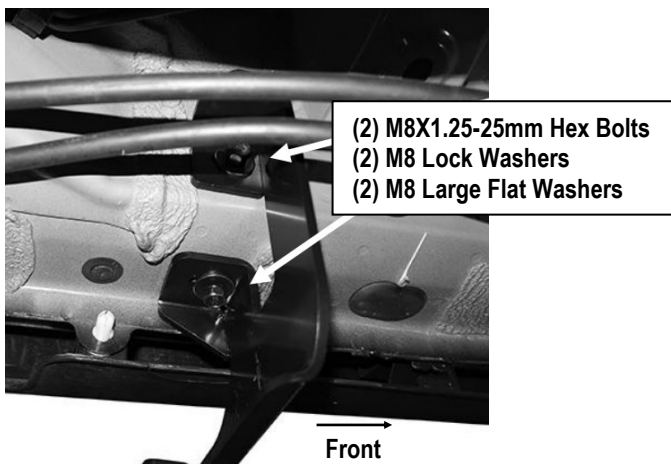
STEP 3

Next, move to the driver side rear mounting location of the vehicle, (Fig 3). Repeat **Steps 1 & 2** to install (1) Driver Rear Mounting Bracket (DRM), (Fig 4).

iArmor®



(Fig 3) Driver Side Rear Mounting Location



(Fig 4) Driver Rear Mounting Bracket Installation

STEP 4

Once all (2) driver side mounting brackets are installed, select and attach the Driver Side Step Bar onto the Mounting Brackets with (2) U Brackets, (4) Spacers, (2) M8X1.25-55mm Carriage Bolts, (2) M8 Large Flat Washers, (2) M8 Lock Washers and (2) M8X1.25 Hex Nuts, (Fig 5). Do not fully tighten hardware at this time.

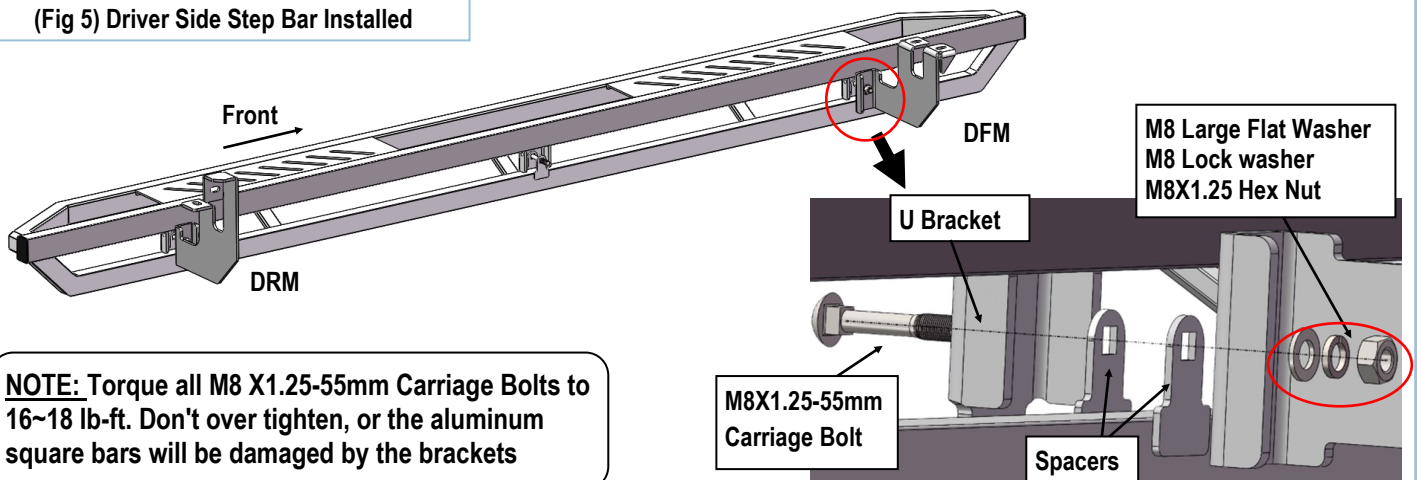
STEP 5

Properly level and adjust the Step Bar and fully tighten all hardware.

STEP 6

Move to the passenger side of the vehicle. Repeat **Steps 1-5** to install passenger side step bar. Installation completed.

(Fig 5) Driver Side Step Bar Installed



NOTE: Torque all M8 X1.25-55mm Carriage Bolts to 16~18 lb-ft. Don't over tighten, or the aluminum square bars will be damaged by the brackets

Attention

Do periodic inspections to the installation to make sure that all hardware is secure and tight. In order to protect your bars/boards, please use only mild soap/non-abrasive products for cleaning.