

# iArmor<sup>®</sup>

## iArmor<sup>®</sup> by APS

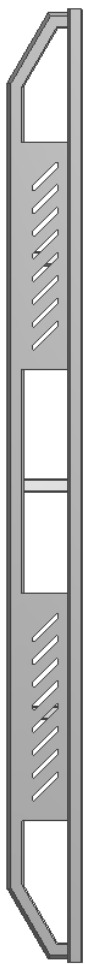
PART#: IA-S352

### BEFORE INSTALLATION

REMOVE CONTENTS FROM BOX. VERIFY ALL PARTS ARE PRESENT. READ INSTRUCTIONS CAREFULLY BEFORE STARTING INSTALLATION. ASSISTANCE IS RECOMMENDED. THANK YOU FOR CHOOSING OUR PRODUCT!

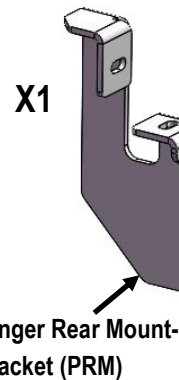
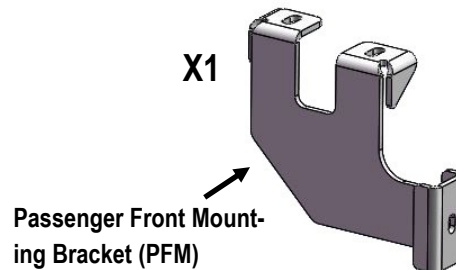
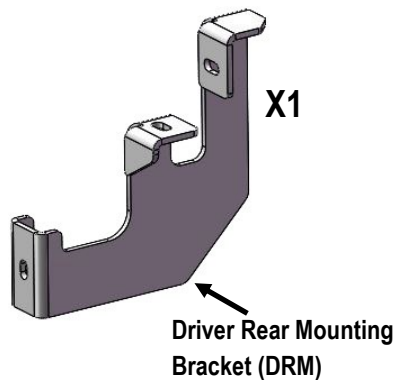
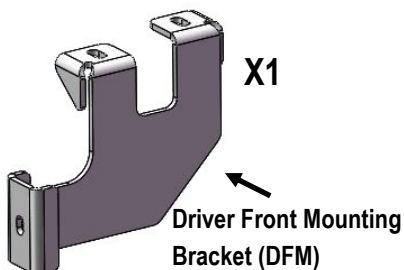
Fastener Size	Tightening Torque (ft-lbs)
6mm	6-7
8mm	16-18
10mm	31-32
12mm	56-58
14mm	92-94

### PART LIST



Driver Side Step Bar

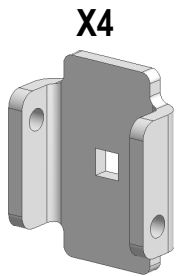
Front  
↑



Passenger Side Step Bar

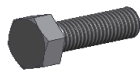
Customer Support: [info@iarmorauto.com](mailto:info@iarmorauto.com)

# iArmor®



X4

U Bracket



X8

M8X1.25-25mm Hex Bolt



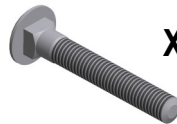
X12

M8 Large Flat Washer



X12

M8 Lock Washer



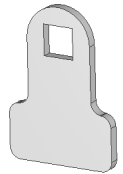
X4

M8X1.25-55mm Carriage Bolt



X4

M8X1.25 Hex Nut



X8

Spacer

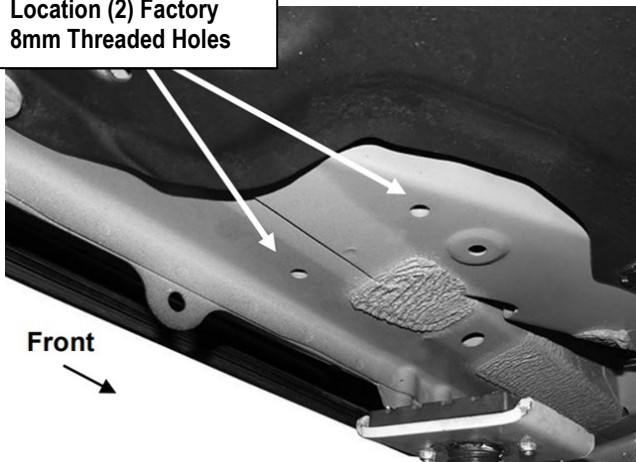
The instruction here is for your reference only. We strongly recommend the professional installer for best result. We are not responsible for any damage caused by the installation.

## STEP 1

Starting on the driver side front of the vehicle, locate the (2) factory 8mm threaded holes at the bottom of the floor panel, (Fig 1).

**NOTE:** Threaded holes may be covered with insulation. Clean mounting locations as required for proper Bracket installation.

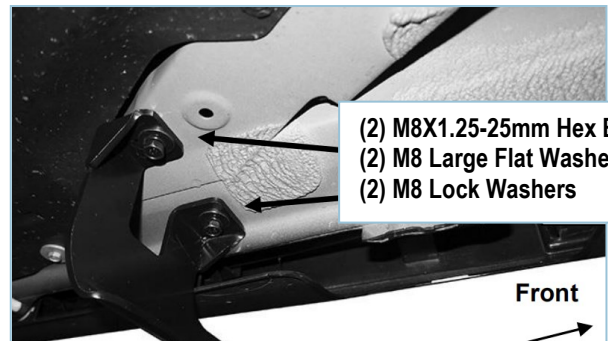
Location (2) Factory  
8mm Threaded Holes



(Fig 1) Driver Side Front Mounting Location

## STEP 2

Select (1) Driver Front Mounting Bracket (DFM). **NOTE:** Attach the Bracket to the two threaded holes with (2) M8X1.25-25mm Hex Bolts, (2) M8 Large Flat Washers, (2) M8 Lock Washers, (Fig 2). Do not fully tighten hardware at this time.

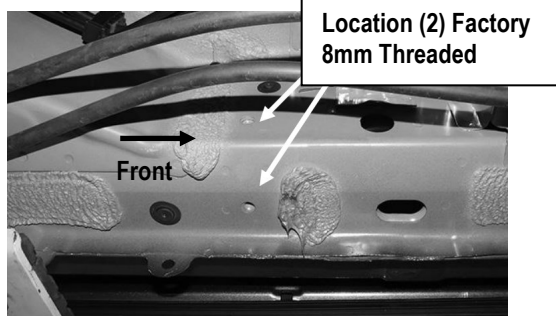


(Fig 2) Driver Front Mounting Bracket (DFM) Installation

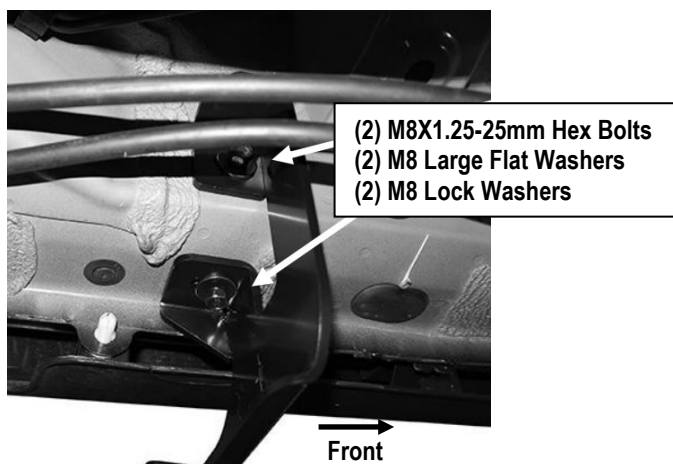
## STEP 3

Next, move to the driver side rear mounting location of the vehicle, (Fig 3). Repeat **Steps 1 & 2** to install (1) Driver Rear Mounting Bracket (DRM), (Fig 4).

# iArmor®



(Fig 3) Driver Side Rear Mounting Location



(Fig 4) Driver Rear Mounting Bracket Installation

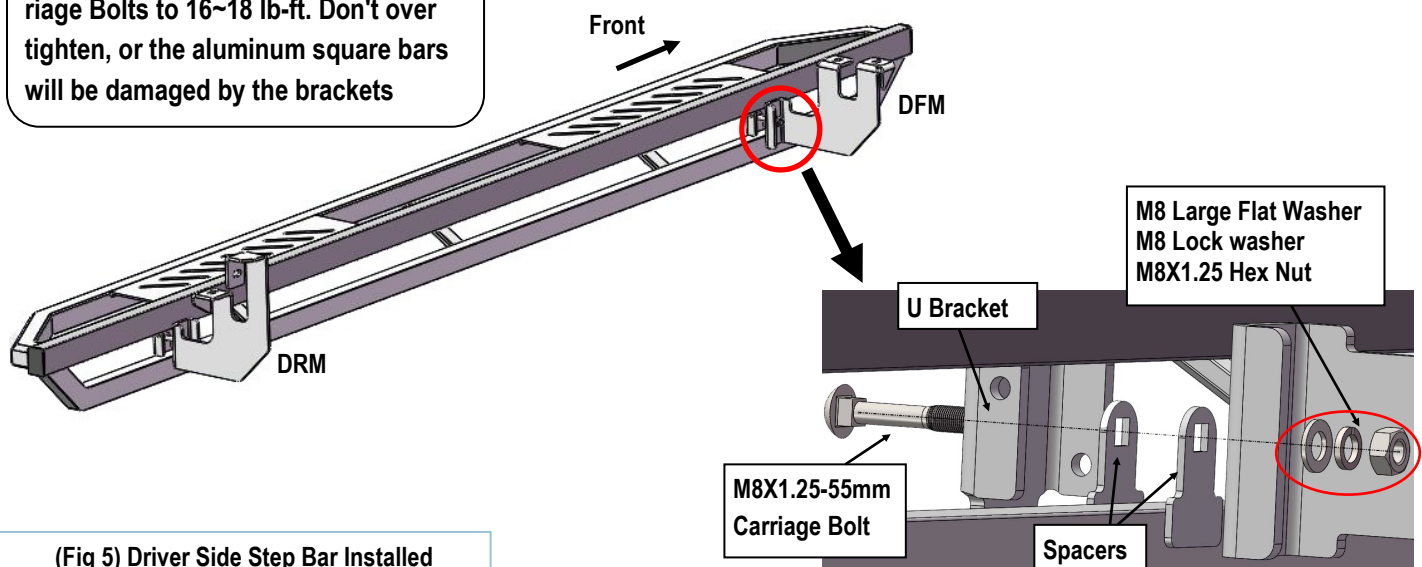
## STEP 4

Once all (2) driver side mounting brackets are installed, select and attach the Driver Side Step Bar onto the Mounting Brackets with (2) U Brackets, (4) Spacers, (2) M8X1.25-55mm Carriage Bolts, (2) M8 Large Flat Washers, (2) M8 Lock Washers and (2) M8X1.25 Hex Nuts (**Fig 5**). Do not fully tighten hardware at this time.

## STEP 5

Properly level and adjust the Step Bar and fully tighten all hardware.

**NOTE:** Torque all M8 X1.25-55mm Carriage Bolts to 16~18 lb-ft. Don't over tighten, or the aluminum square bars will be damaged by the brackets



(Fig 5) Driver Side Step Bar Installed

# iArmor®

## STEP 6

Move to the passenger side of the vehicle. Repeat **Steps 1-5** to install passenger side step bar.

Installation completed (**Fig 6**).



(Fig 6) Installation Completed

### Attention

**Do periodic inspections to the installation to make sure that all hardware is secure and tight.**

**In order to protect your bars/boards, please use only mild soap/non-abrasive products for cleaning.**