

IARMOR EDGE™

PART#: IA-W923

BEFORE INSTALLATION

REMOVE CONTENTS FROM BOX. VERIFY ALL PARTS ARE PRESENT. READ INSTRUCTIONS CAREFULLY BEFORE STARTING INSTALLATION. ASSISTANCE IS RECOMMENDED. THANK YOU FOR CHOOSING OUR PRODUCT!

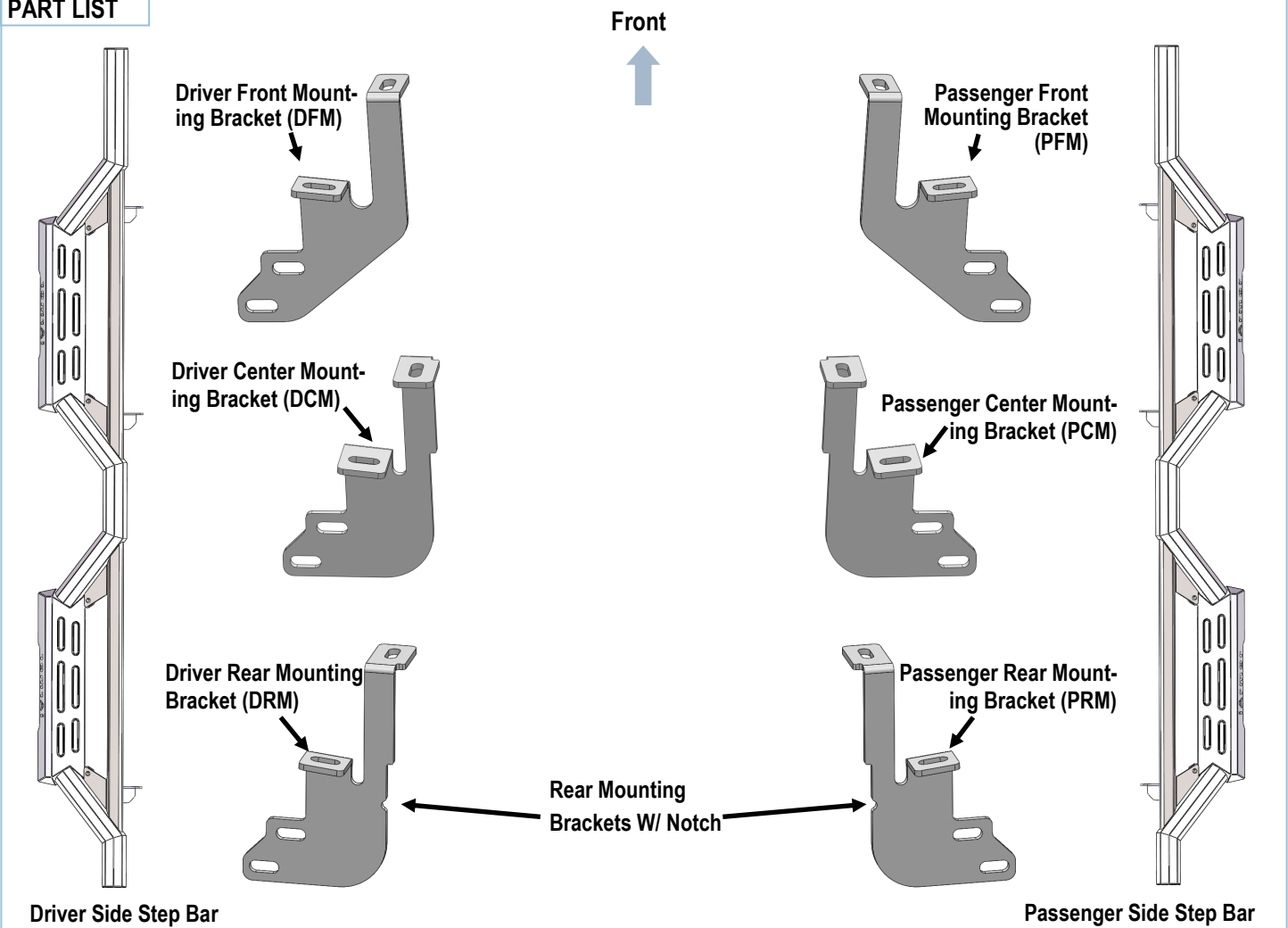
*ROCKER PANEL MOUNT

*DRILLING NOT REQUIRED

Torque Value

Fastener Size	Tightening Torque (ft-lbs)	Required
6mm	6-7	X
8mm	16-18	√
10mm	31-32	√
12mm	56-58	X
14mm	92-94	X

PART LIST



iArmor[®]

Hardware Package (For Brackets & Step Bars Installation)

Item	QTY	Description	Item	QTY	Description
1#	12	M8X1.25-25 Hex Bolts	5#	6	M8 Clip Nuts
2#	18	M8 Large Flat Washers	6#	12	M10X1.5-25 Hex Bolts
3#	12	M8 Lock Washers	7#	24	M10 Flat Washers
4#	6	M8X1.25 Hex Nuts	8#	12	M10X1.5 Nylon Lock Nuts



1#



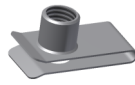
2#



3#



4#



5#



6#



7#



8#

iArmor[®]

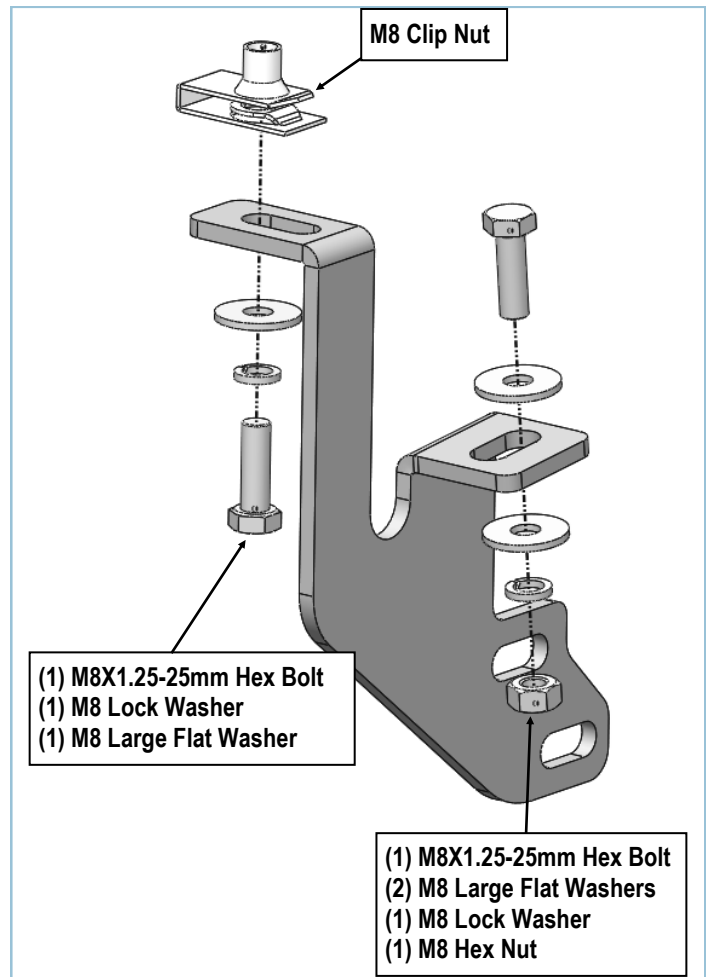
The instruction here is for your reference only. We strongly recommend the professional installer for best result. We are not responsible for any damage caused by the installation.

STEP 1

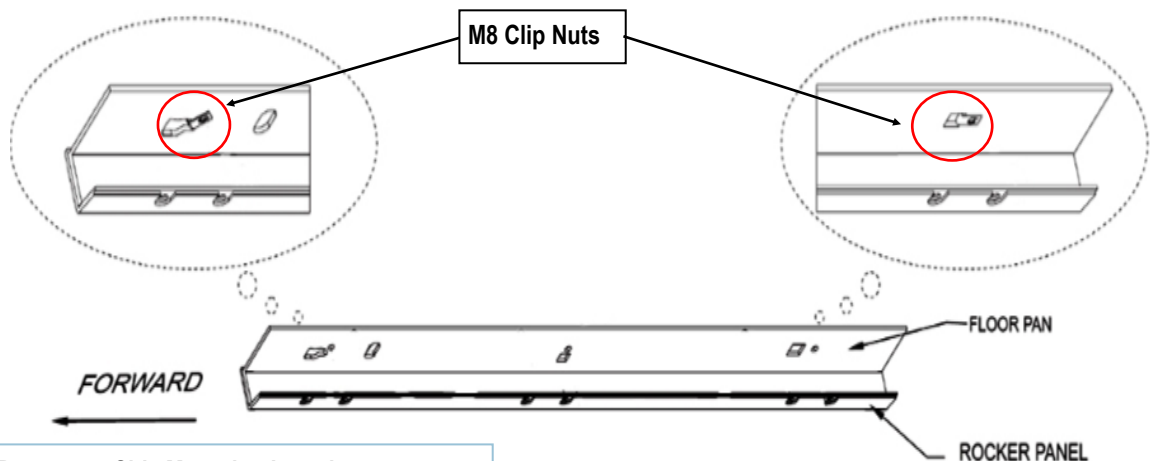
Start the installation under the passenger side of the vehicle. Locate the pair of holes at the bottom of the rocker panel and the square hole next to the round hole at the bottom of the floor pan. Insert M8 Clip Nuts over the round hole through square hole on floor panel, (Fig 1).

STEP 2

Select Passenger Front Mounting Bracket (PFM). Attach the Mounting Bracket to the installed M8 Clip Nut with (1) M8X1.25-25mm Hex Bolt, (1) M8 Lock Washers and (1) M8 Flat Washer; to the rocker panel with (1) M8X1.25-25mm Hex Bolt, (2) M8 Large Flat Washers, (1) M8 Lock Washer and (1) M8 Hex Nut, (Fig 2). Do not fully tighten hardware at this time.



(Fig 2) Passenger Front Mounting Bracket Installation

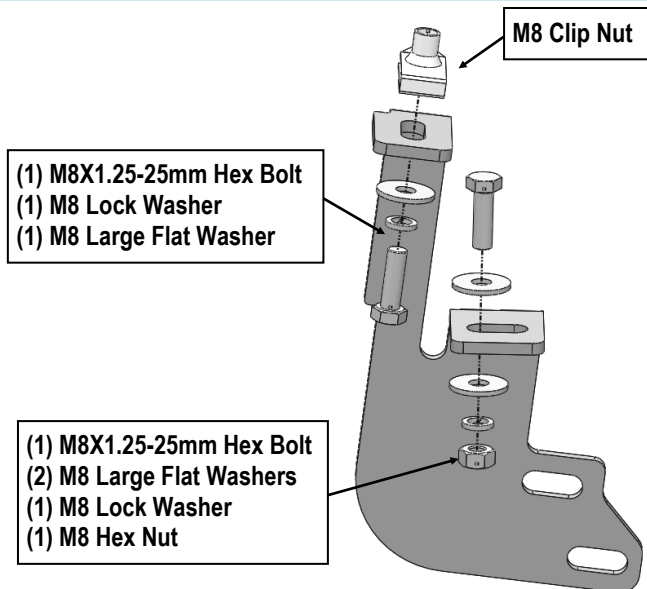


(Fig 1) Passenger Side Mounting Location

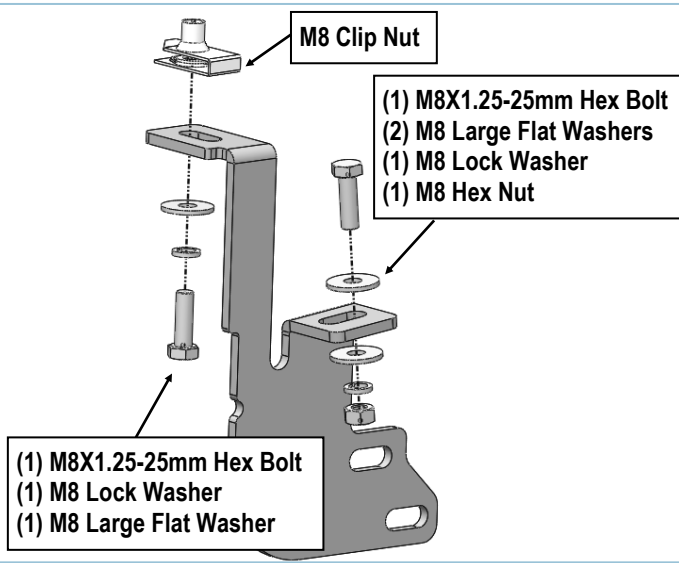
iArmor®

STEP 3

Move to the passenger side Center and Rear mounting location. Repeat **Step 2** for passenger side Center and Rear brackets installation. (**Figs 3&4**). Do not fully tighten hardware at this time.



(Fig 3) Passenger Center Mounting Bracket Installation



(Fig 4) Passenger Rear Mounting Bracket Installation

STEP 4

Once all (3) Mounting Brackets have been installed, attach the Passenger Side Step Bar to the Mounting Brackets with (6) M10X1.5-25 Hex Bolts, (12) M10 Flat Washers and (6) M10X1.5 Nylon Lock Nuts, (**Fig 5**). Do not fully tighten hardware at this time.

STEP 5

Properly level and adjust the Step Bar and fully tighten all hardware.

STEP 6

Move to the other side of the vehicle. Repeat **Steps 1-5** for the other Side Step Bar installation.

Attention

Do periodic inspections to the installation to make sure that all hardware is secure and tight.

In order to protect your bars/boards, please use mild soap/non-abrasive products for cleaning only.

iArmor[®]

