

# iArmor<sup>®</sup>

## iArmor<sup>®</sup> by APS

PART#: IA-S926

### BEFORE INSTALLATION

REMOVE CONTENTS FROM BOX. VERIFY ALL PARTS ARE PRESENT. READ INSTRUCTIONS CAREFULLY BEFORE STARTING INSTALLATION. ASSISTANCE IS RECOMMENDED. THANK YOU FOR CHOOSING OUR PRODUCT!

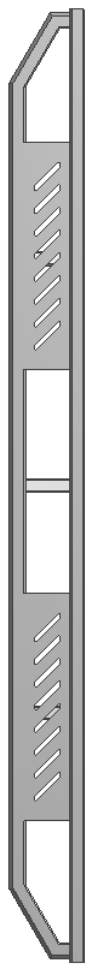
**\*ROCKER PANEL MOUNT**

**\*NO DRILLING / TRIMMING REQUIRED**

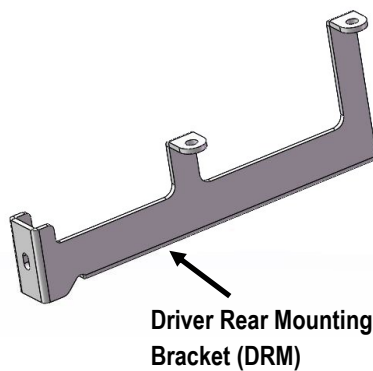
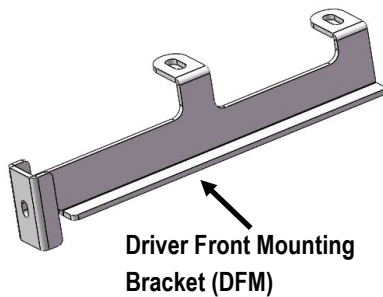
### Torque Value

Fastener Size	Tightening Torque (ft-lbs)	Required
6mm	6-7	X
8mm	16-18	√
10mm	31-32	√
12mm	56-58	X
14mm	92-94	X

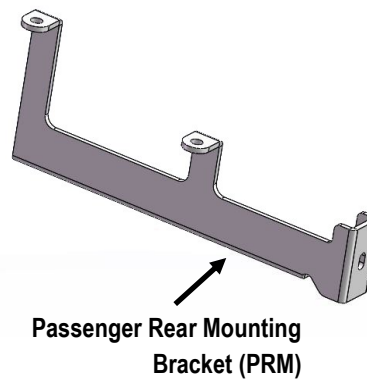
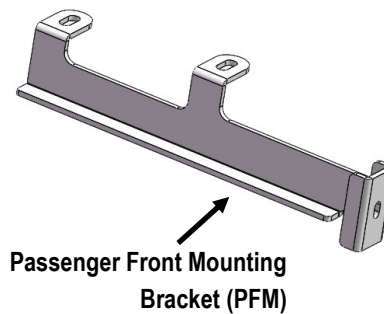
### PART LIST



Driver Side Step Bar



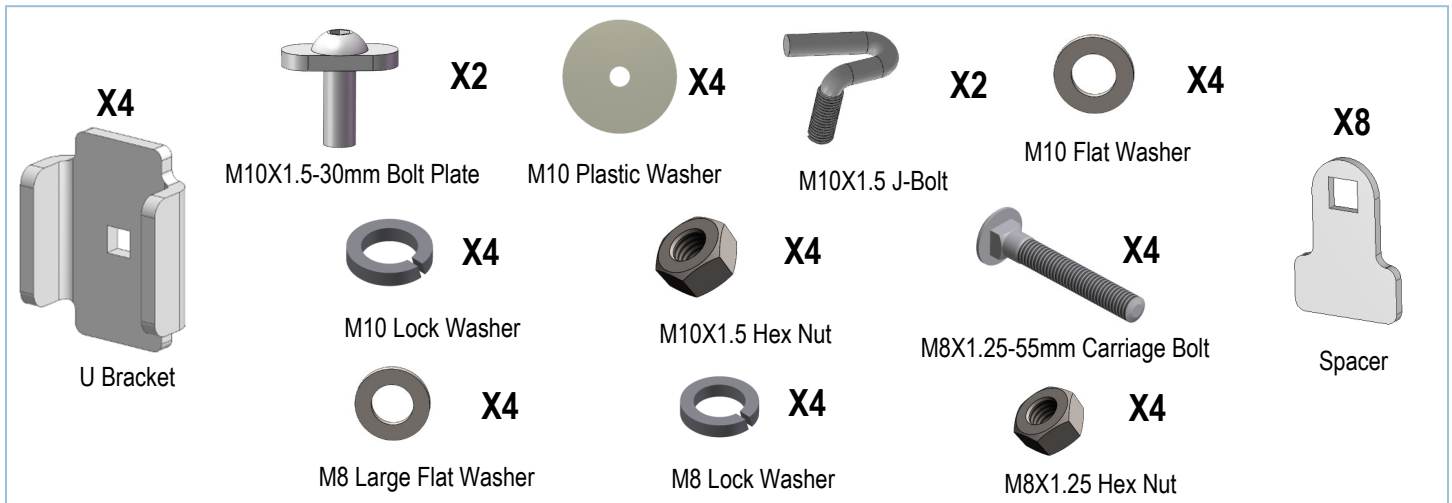
Front  
↑



Passenger Side Step Bar

Customer Support: [info@iarmorauto.com](mailto:info@iarmorauto.com)

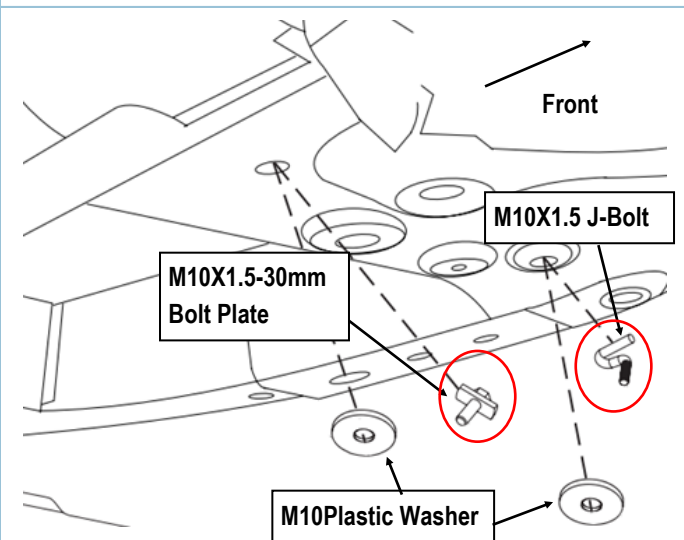
# iArmor®



The instruction here is for your reference only. We strongly recommend the professional installer for best result. We are not responsible for any damage caused by the installation.

## STEP 1

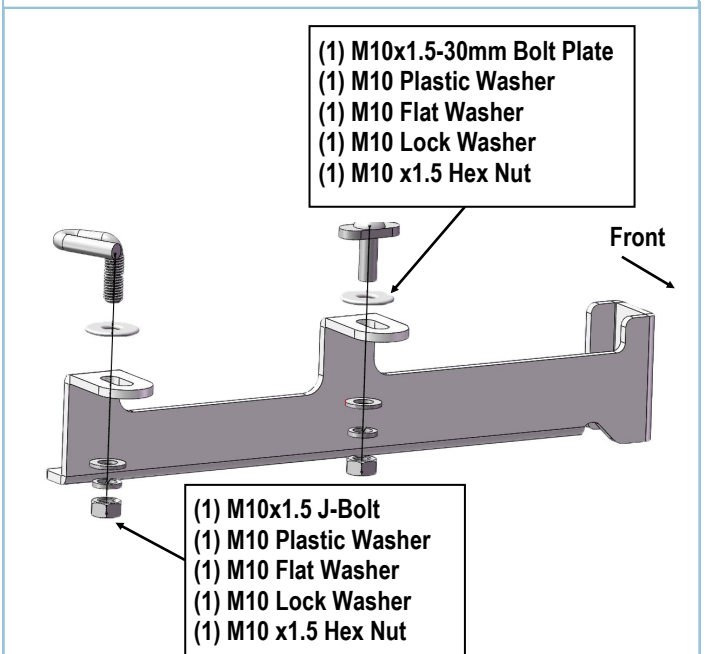
Insert M10x1.5-30mm Bolt Plate into outer hole, and use a Plastic Washer to hold in place. Insert M10x1.5 J-Bolt into inner hole and use a M10 Plastic Washer to hold in place. (Fig 1)



(Fig 1) Bolt Plate/ J-Bolt Installation  
(Driver Side Front Mounting Location)

## STEP 2

Select (1) Driver Front Mounting Bracket, (DFM). Attach Driver Front Mounting Bracket (DFM) to the previously M10x1.5-30mm Bolt Plate and M10x1.5 J-Bolt using (2) M10 Flat Washers, (2) M10 Lock Washers, and (2) M10 x1.5 Hex Nuts as shown (Fig 2).



(Fig 2) Driver Front Mounting Bracket Installation

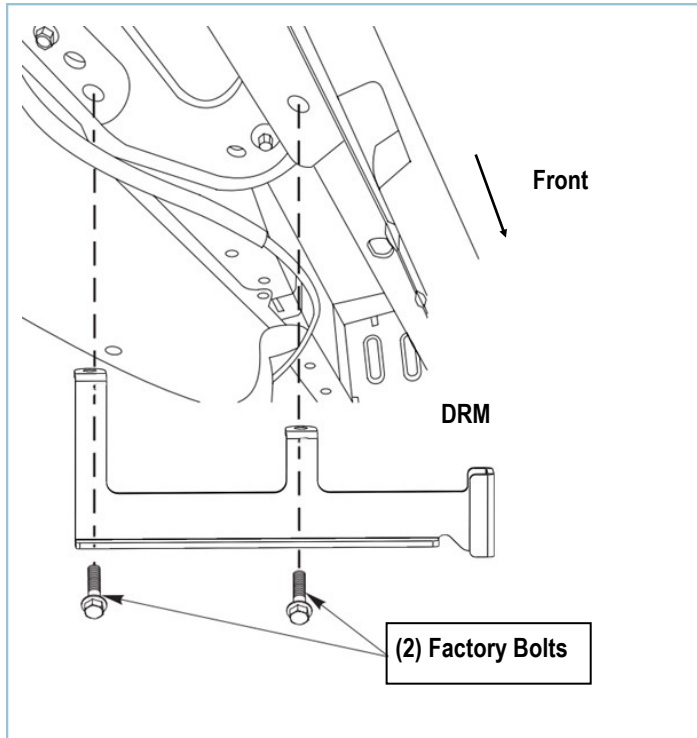
# iArmor®

## STEP 3

Move to Driver Side Rear Mounting Location. Remove the two foremost factory bolts from the rear suspension bracket. Slide bracket into place and secure using factory bolts (Fig 3). Don't fully tighten at this time.

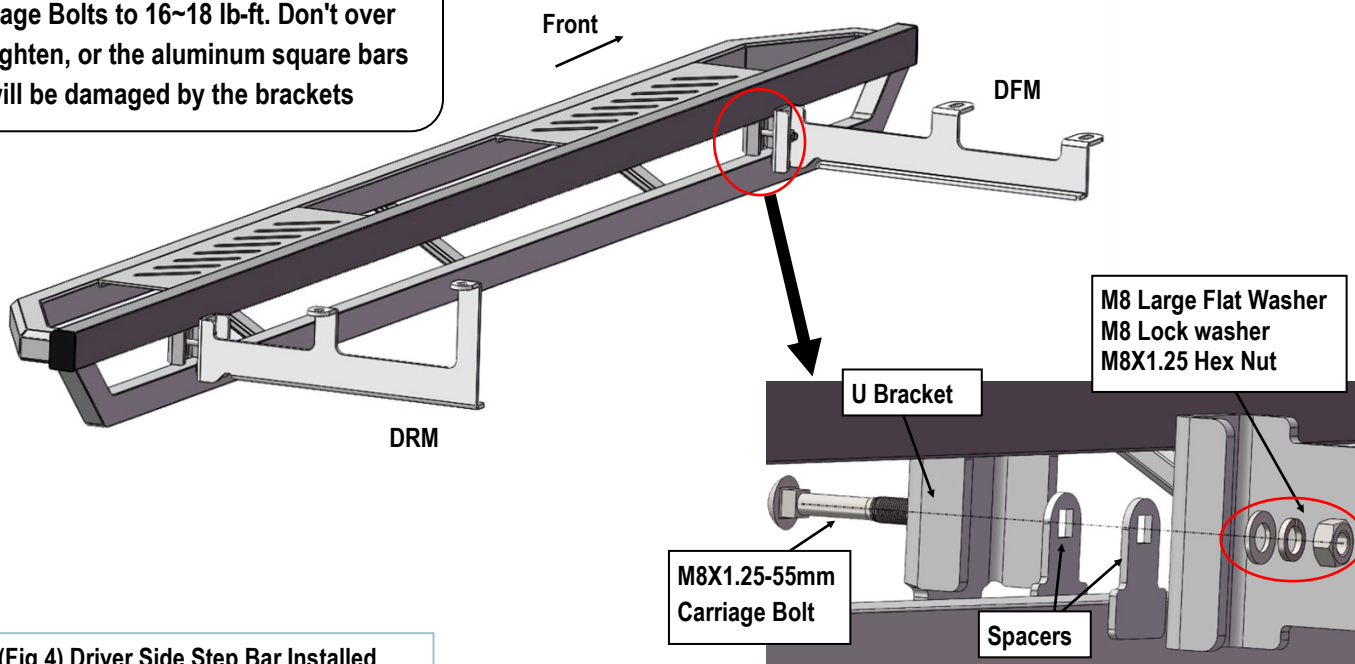
## STEP 4

Once all (2) driver side mounting brackets are installed, select and attach the Driver Side Step Bar onto the Mounting Brackets with (2) U Brackets, (4) Spacers, (2) M8X1.25-55mm Carriage Bolts, (2) M8 Large Flat Washers, (2) M8 Lock Washers and (2) M8X1.25 Hex Nuts (Fig 4). Do not fully tighten hardware at this time.



(Fig 3) Driver Rear Mounting Bracket Installed

**NOTE:** Torque all M8 X1.25-55mm Carriage Bolts to 16~18 lb-ft. Don't over tighten, or the aluminum square bars will be damaged by the brackets



(Fig 4) Driver Side Step Bar Installed

# iArmor®

## STEP 5

Properly level and adjust the Step Bar and fully tighten all hardware.

## STEP 6

Move to the passenger side of the vehicle. Repeat **Steps 1-5** to install passenger side step bar.

Installation completed.

### Attention

**Do periodic inspections to the installation to make sure that all hardware is secure and tight.**

**In order to protect your bars/boards, please use only mild soap/non-abrasive products for cleaning.**