

Installation Instructions for IA06SAH8

by APS Auto Parts Specialist Inc.

Application: For 2015-2019 Ford F-150 Super Cab /2017-2019 Ford F-250/F-350 Super Cab
Estimated Time: 1 to 2 hours



The instruction here is for your reference only. We strongly recommend the professional installer for best result. We are not responsible for any damage caused by the installation. Thank you for choosing our product!

PARTS LIST:

| Item | QTY | Description | Item | QTY | Description |
|------|-----|------------------------------------|------|-----|---------------------------|
| #1 | 2 | Driver/ Passenger Side Bar | #6 | 12 | M8 Nylon Lock Nuts |
| #2 | 4 | Driver/Left Front Mounting Bracket | #7 | 8 | M10X1.5-75 Carriage Bolts |
| #3 | 4 | 2-Hole Support Bracket | #8 | 8 | M10 Flat Washers |
| #4 | 12 | Plastic Washers | #9 | 8 | M10 Lock Washers |
| #5 | 12 | M8 Flat Washers | #10 | 8 | M10 Hex Nuts |



2-Hole Support Bracket

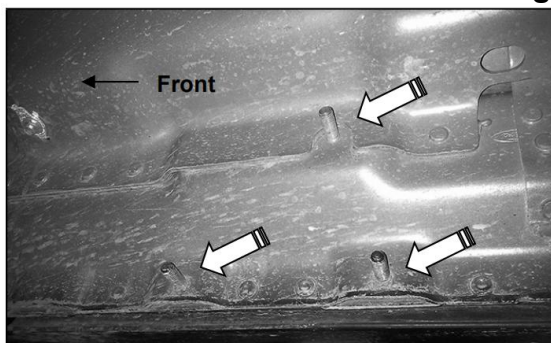
NOTE: All Brackets are universal and will fit both side of the vehicle!

PROCEDURE:

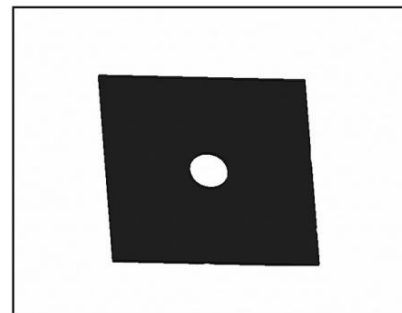
1. VERIFY ALL PARTS ARE PRESENT. READ INSTRUCTIONS CAREFULLY BEFORE STARTING INSTALLATION. ASSISTANCE IS RECOMMENDED.
2. Start the installation under the passenger side of the vehicle. Locate the front factory running board mounting location along the inner side of the body. **(Fig 1)**
3. Select (1) Plastic Washer over each of the (3) factory mounting studs in the body panel, **(Fig 2 & 3)**. **IMPORTANT:** The Plastic Washers are designed to prevent corrosion between the aluminum body panel and the steel mounting brackets. **Do not install the Brackets without the Plastic Washers.**
4. Attach the Mounting Bracket to the (3) factory studs with (3) 8mm Flat Washers and (3) 8mm Nylon Lock Nuts, **(Fig 4)**. Leave brackets loose at this time.
5. Repeat Steps 2-4 to install the remaining rear passenger side Brackets.
6. Select the Driver Side Bar. Slip (2) M10X1.5-75 Carriage Bolts into each 2-Hole Support Brackets ,and insert the 2-Hole support bracket into the Driver Side Bar .**(Fig 5)**. Carefully position the Bar onto the (4) Mounting Brackets. **IMPORTANT:** Do not slide the Bar on the Brackets or damage to the finish may result. Attach the Driver Side Bar to the Mounting Brackets with (2) M10 Hex Nuts, (2)10mm lock washers and (2)10mm flat washers, **(Fig 6)**. Do not tighten hardware.
7. Level and adjust the Bar properly and tighten all hardware. **NOTE: Torque all M10 X1.5-75 Carriage Bolts to 29~33 lb-ft.**
8. Repeat Step 2-7 for the other side installation. Installation completed!!! **(See Fig 7)**
9. Do periodic inspections to the installation to make sure that all hardware is secure and tight.

Products have a high quality finish that must be cared for like any other exposed finish on the vehicle. Protect the finish with a non-abrasive automotive wax, (e.g.Pure Carnauba) on a regular basis. The use of any soap, polish or wax that contains an abrasive is detrimental, as the compounds scratch the finish and open it to corrosion.

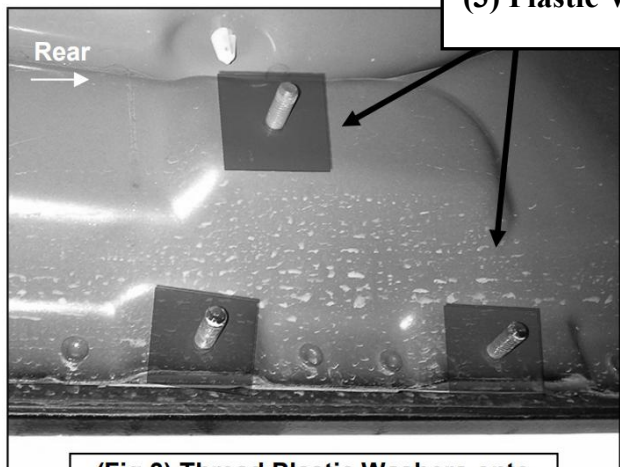
Driver/Passenger Side Installation Pictured



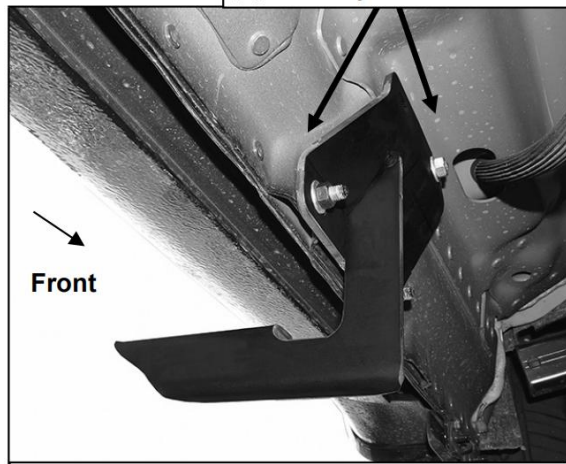
(Fig 1) Passenger side front mounting location



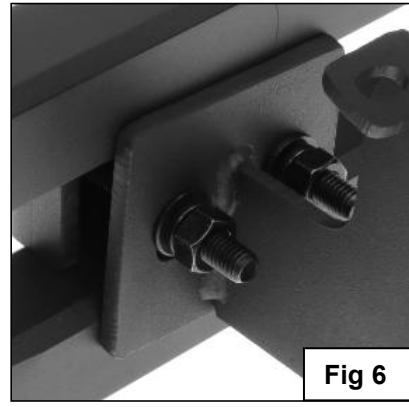
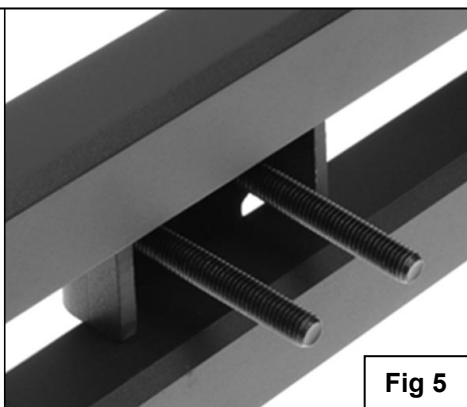
(Fig 2) Plastic Insulation Washer



(Fig 3) Thread Plastic Washers onto all mounting studs. Passenger side rear mounting location pictured



(Fig 4) Driver side front Bracket installation



Complete Installation