

# iArmor<sup>®</sup>

## iArmor<sup>®</sup> by APS

PART#: IA-S152H

### BEFORE INSTALLATION

REMOVE CONTENTS FROM BOX. VERIFY ALL PARTS ARE PRESENT. READ INSTRUCTIONS CAREFULLY BEFORE STARTING INSTALLATION. ASSISTANCE IS RECOMMENDED. THANK YOU FOR CHOOSING OUR PRODUCT!

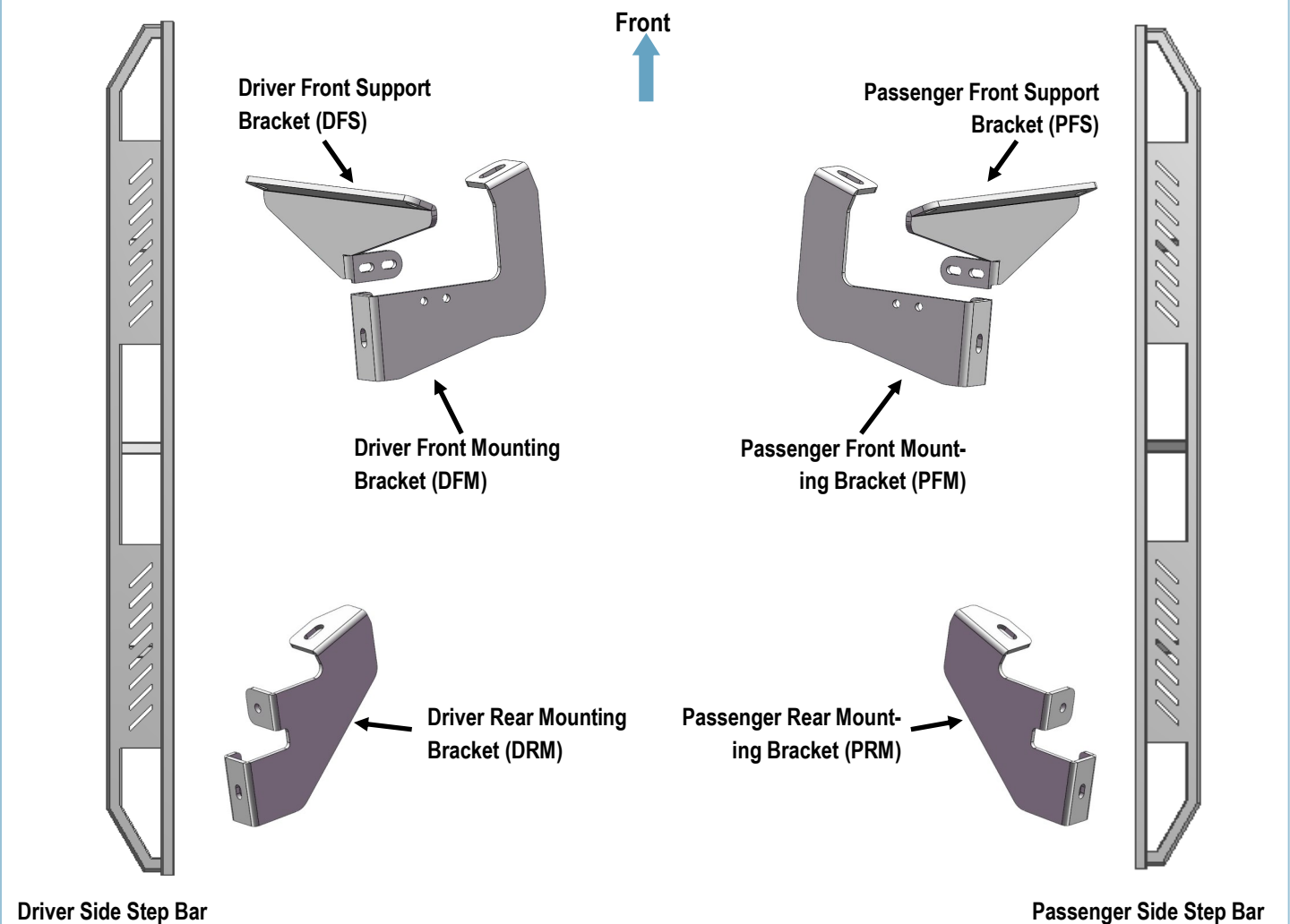
\*ROCKER PANEL MOUNT

\*DRILLING IS REQUIRED

### Torque Value

Fastener Size	Tightening Torque (ft-lbs)	Required
6mm	6-7	√
8mm	16-18	√
10mm	31-32	√
12mm	56-58	X
14mm	92-94	X

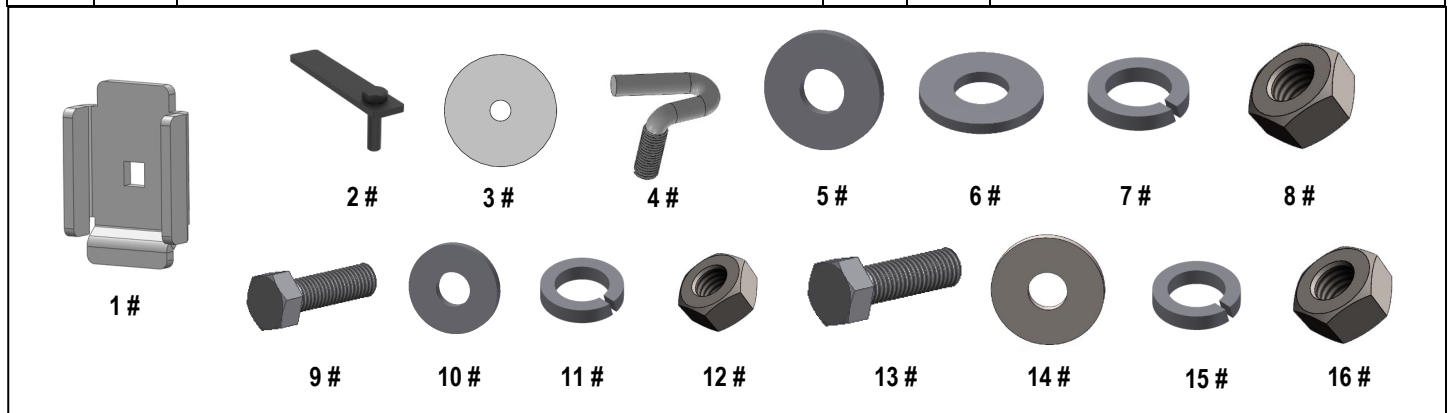
### PART LIST



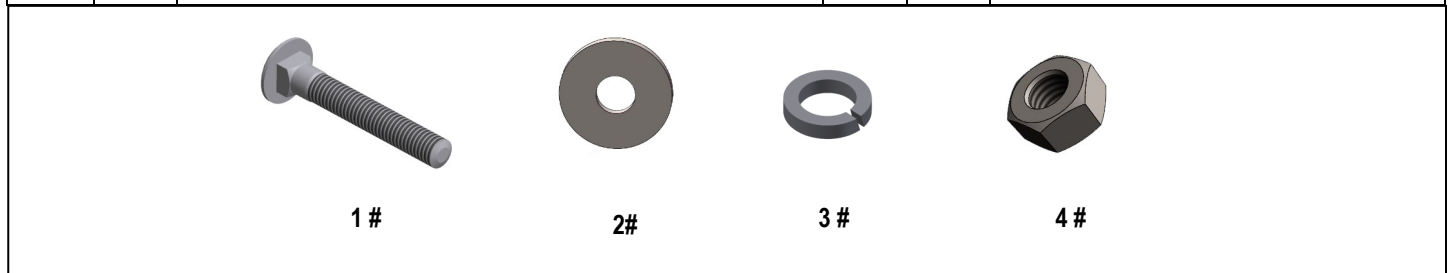
Customer Support: [info@iarmorauto.com](mailto:info@iarmorauto.com)

# iArmor®

Hardware Package A (For Bracket Installation)					
Item	QTY	Description	Item	QTY	Description
1#	4	U Brackets	9#	4	M6X1-20mm Hex Bolts
2#	4	M10X35 Bolt Plates	10#	8	M6 Large Flat Washers
3#	4	M10 Plastic Washers	11#	4	M6 Lock Washers
4#	4	M10 J-Bolts	12#	4	M6X1 Hex Nuts
5#	4	M10 Large Flat Washers	13#	2	M8X1.25-25mm Hex Bolts
6#	4	M10 Flat Washers	14#	4	M8 Large Flat Washers
7#	8	M10 Lock Washers	15#	2	M8 Lock Washers
8#	8	M10 Hex Nuts	16#	2	M8 Hex Nuts



Hardware Package B (For Step Bar Installation)					
Item	QTY	Description	Item	QTY	Description
1#	4	M8X1.25-55mm Carriage Bolts	3#	4	M8 Lock Washers
2#	4	M8 Large Flat Washers	4#	4	M8 Hex Nuts



Customer Support: [info@iarmorauto.com](mailto:info@iarmorauto.com)

# iArmor®

The instruction here is for your reference only. We strongly recommend the professional installer for best result. We are not responsible for any damage caused by the installation.

## STEP 1

Unsecure the driver side rocker panel trim by releasing the plastic retainers along the bottom using a pair of small screwdrivers. With the doors open remove the two forward most retainers by sliding them down and off of the plastic rocker panel trim. (Fig 1-2)



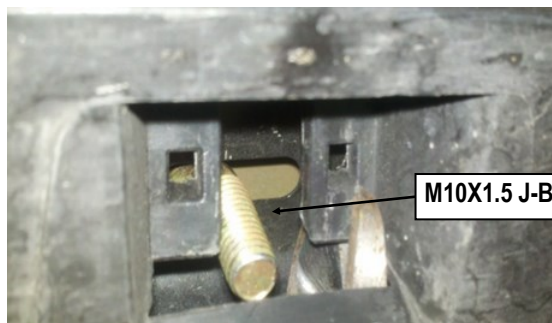
Fig 1



Fig 2

## STEP 2

Insert (2) M10X1.5 J-Bolts into the two slots no longer covered by the plastic retainers. Slight trimming of the plastic is recommended to add clearance for nuts and washers. (Fig 3)



M10X1.5 J-Bolt

Fig 3

## STEP 3

Insert (1) M10X35 Bolt Plate into the front driver side slot under the vehicle (Fig 4). Use a M10 plastic Washer to prevent losing the bolt plate in the body while installing the bracket.

**NOTE:** Some models have additional sheet metal within the uni-body on the driver side front slot. Installation of bolt plate requires inserting the bolt plate threaded end first and pulling the bolt into an appropriate position with a magnet prior to installing the plastic retainer.

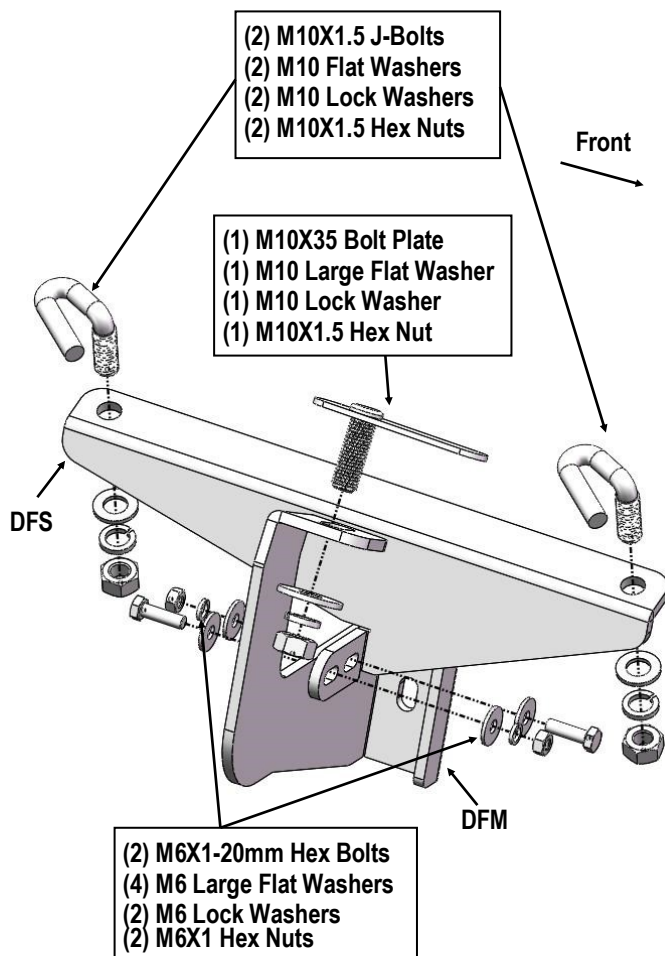


M10X35 Bolt Plate

(Fig 4) Insert Bolt Plate Into The Front Driver Side Slot Under The Vehicle

## STEP 4

Assemble Driver Front Mounting Bracket and Driver Front Support Bracket with (2) M6X1-20mm Hex Bolts, (4) M6 Large Flat Washers, (2) M6 Lock Washers and (2) M6X1 Hex Nuts. Lift the rocker panel trim away from the body and install the driver side front bracket over the (2) M10X1.5 J-Bolt and (1) M10X35 Bolt Plate. Secure using (1) M10 Large Flat Washer, (3) M10 Lock Washers, (3) M10X1.5 Hex Nuts, and (2) M10 Flat Washers. The step bar cradle faces the rear of the vehicle (Fig 5). Do not tighten fully at this time.



(Fig 5) Driver Side Front Bracket Installation

## STEP 5

Insert (1) M10X35 Bolt Plate into the rear driver side slot under the vehicle using a M10 plastic washer. Use the rear bracket to line up where the pinch weld must be drilled such that the bracket will be square and level. The step bar cradle faces the front of the vehicle. Center punch and drill a 3/8"-7/16" hole. ( Fig 6 & 7)

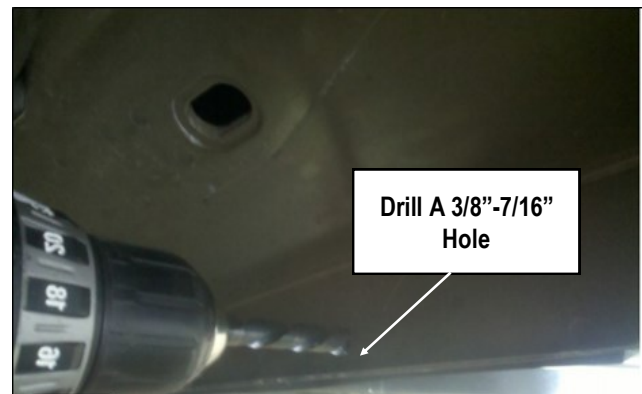
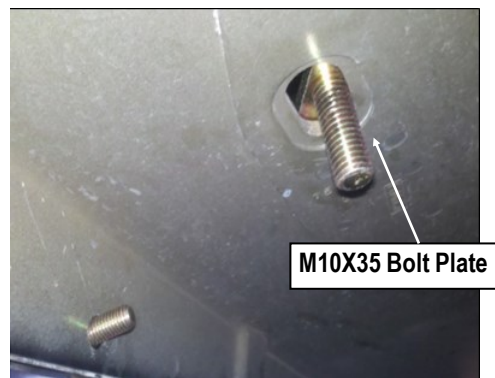


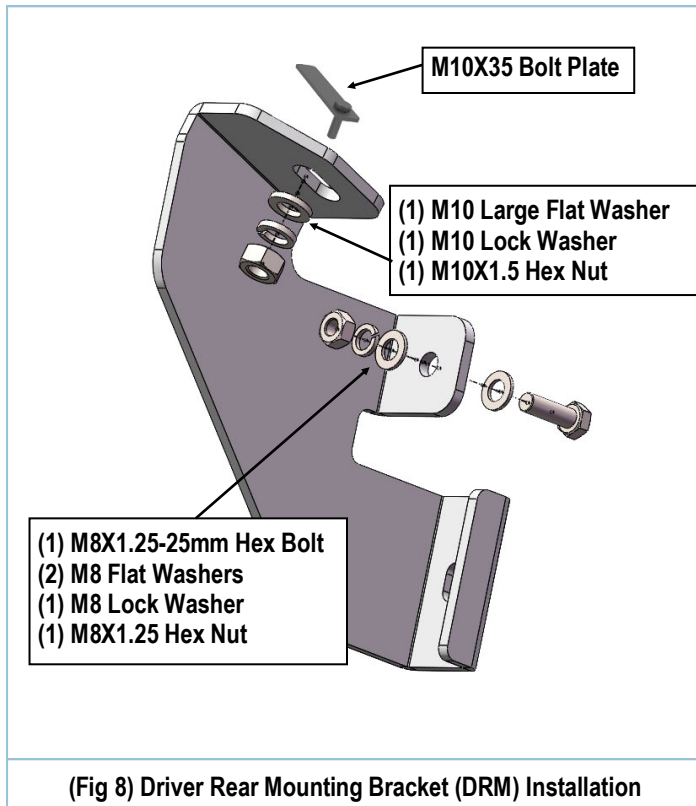
Fig 6



(Fig 7)

## STEP 6

Install Driver Rear Mounting Bracket (DRM) as shown. Do not tighten fully at this time, (Fig 8).



## STEP 7

Once all (2) driver side mounting brackets are installed, select and attach the Driver Side Step Bar onto the Mounting Brackets with (2) U Brackets, (2) M8X1.25-55mm Carriage Bolts, (2) M8 Large Flat Washers, (2) M8 Lock Washers and (2) M8X1.25 Hex Nuts (**Fig 9**). Do not fully tighten hardware at this time.

## STEP 8

Properly level and adjust the Step Bar and fully tighten all hardware.

## STEP 9

Move to the passenger side of the vehicle. Repeat **Steps 1-8** to install passenger side step bar.

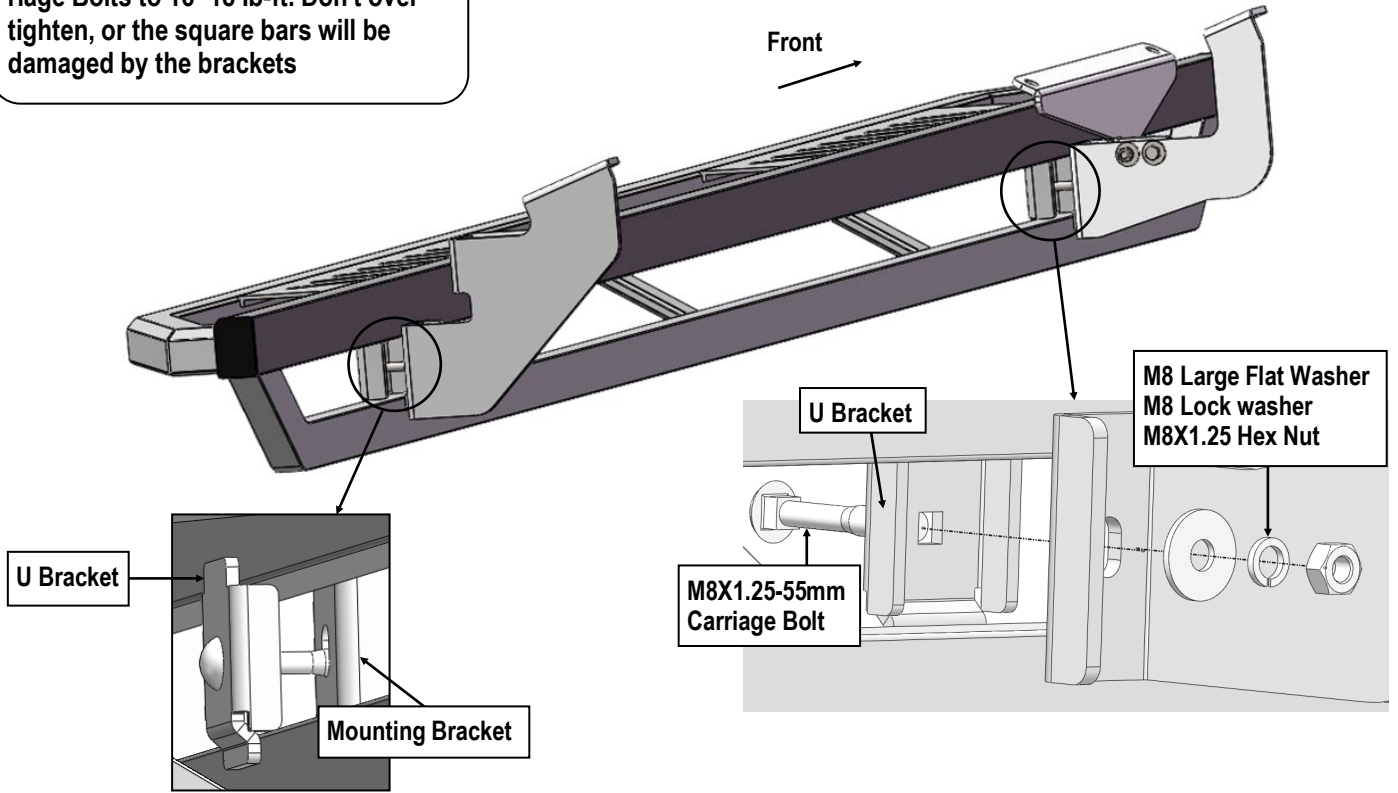
Installation completed.

### Attention

Do periodic inspections to the installation to make sure that all hardware is secure and tight.  
In order to protect your bars/boards, please use mild soap/non-abrasive products for cleaning only.

# iArmor<sup>®</sup>

**NOTE:** Torque all M8 X1.25-55mm Carriage Bolts to 16~18 lb-ft. Don't over tighten, or the square bars will be damaged by the brackets



(Fig 9) Driver Side Step Bar Installation